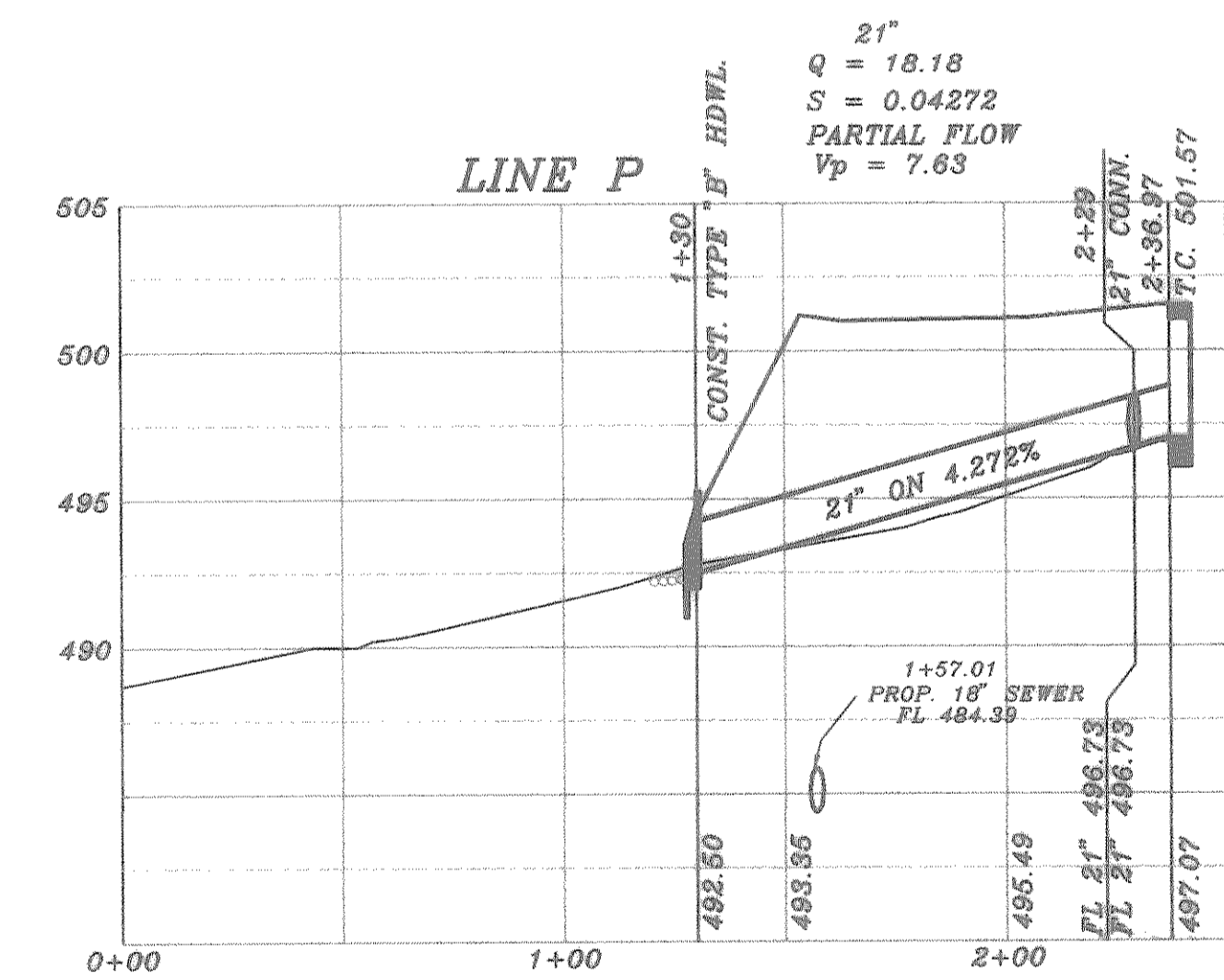
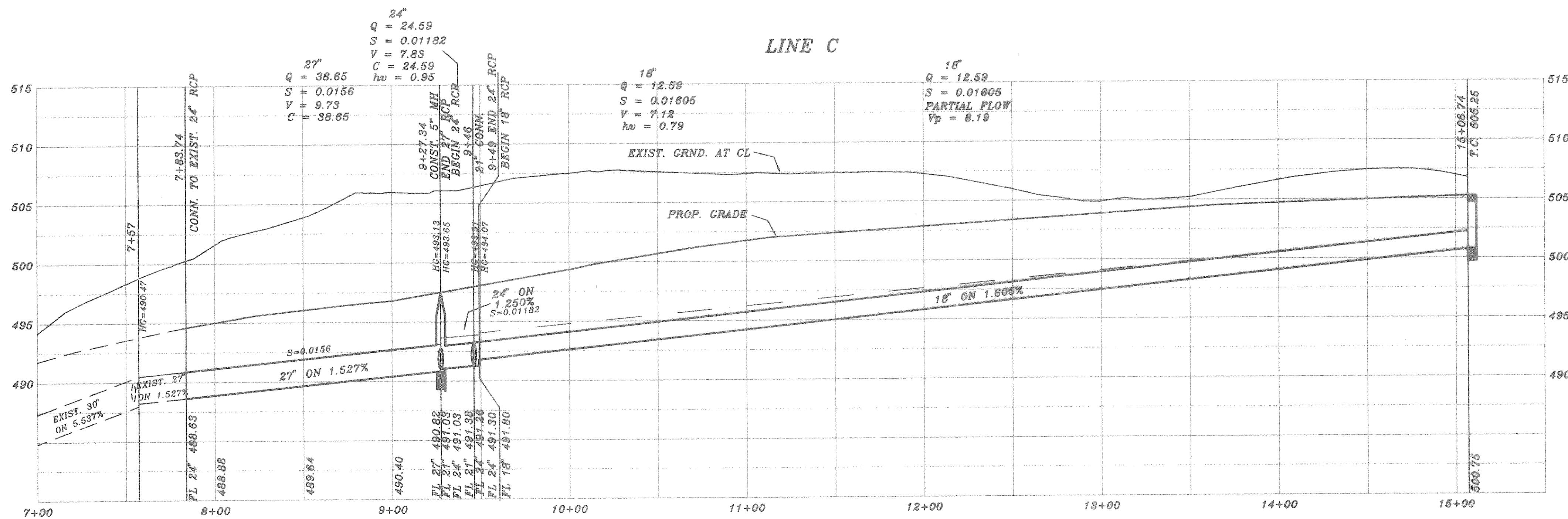
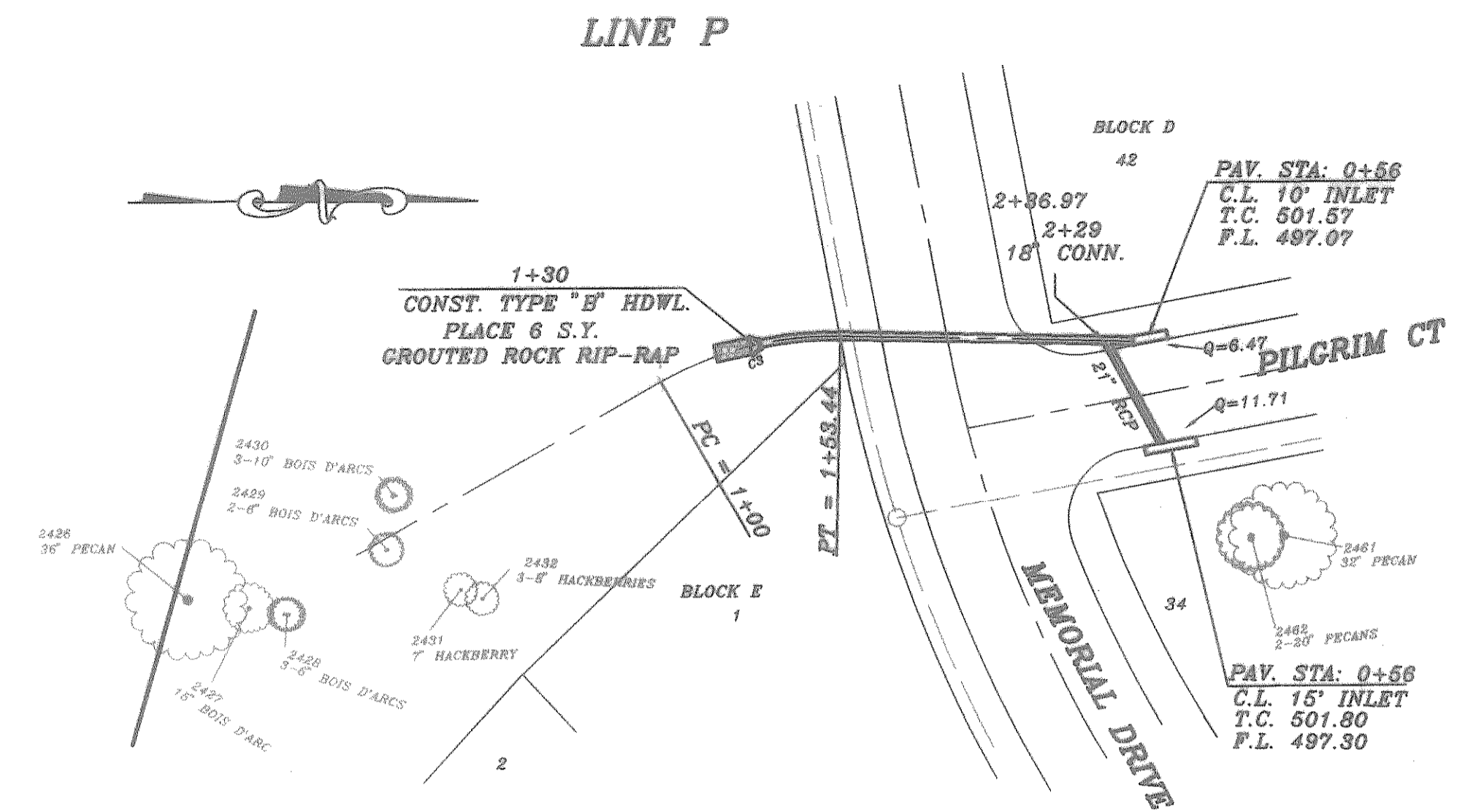
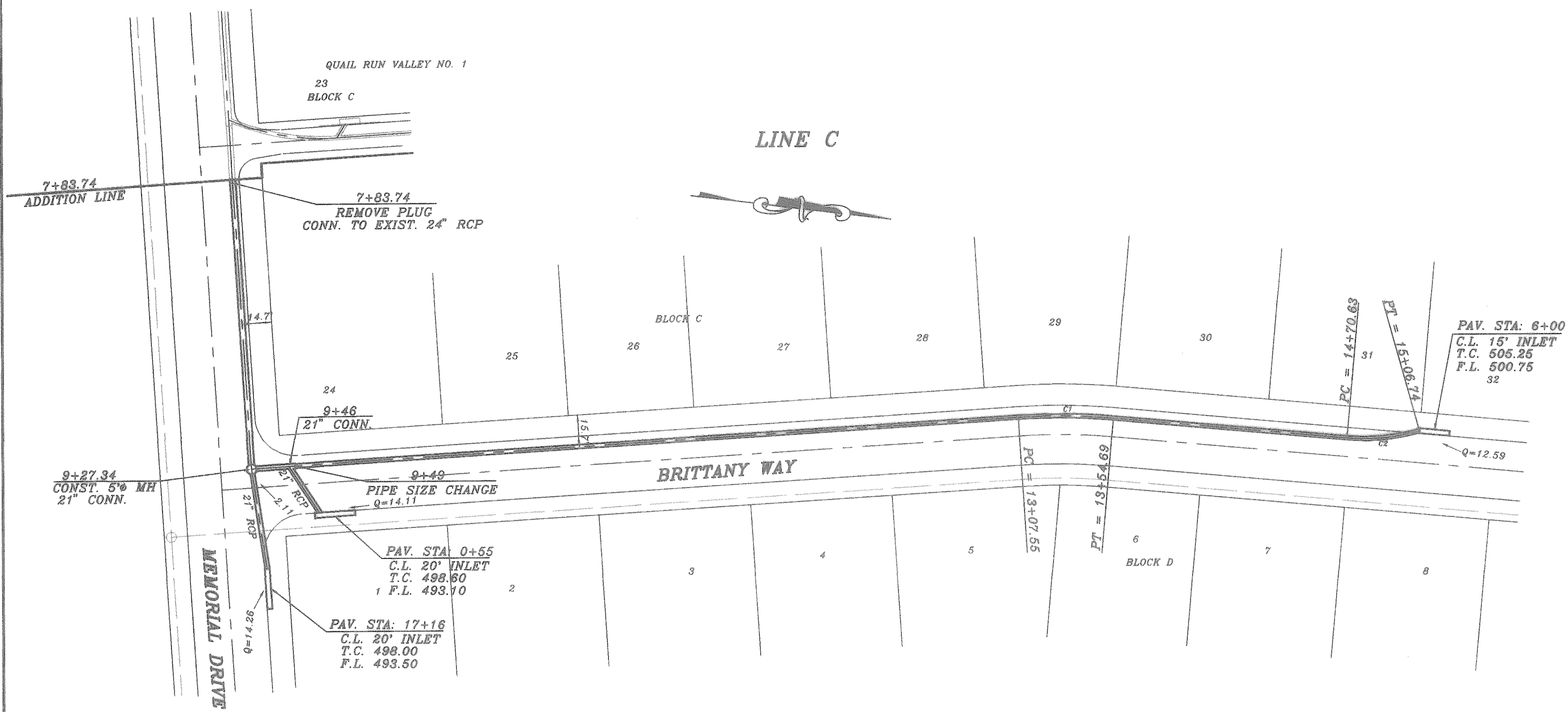


CURVE	RADIUS	LENGTH	TANGENT	CHORD	BEARING	DELTA
C1	309.30'	47.14'	23.61'	47.09'	N89°08'01" W	08°43'55"
C2	100.00'	38.11'	18.26'	36.92'	N8°53'13" E	20°41'27"
C3	100.00'	53.44'	27.37'	52.81'	S1°07'49" E	30°37'09"



PHASE 2A

BENCH MARK
SQUARE CUT IN CONCRETE AT BASE OF
CONCRETE WALL AT S.W. CORNER OF
SOUTH APPROACH TO BRIDGE OVER
SQUABLE CREEK ON HWY. 205
ELEV. 472.41

BENCH MARK
60D NAIL IN 36" PECAN TREE (TREE NO. 2302)
PAV. STA. 8+30. 71' RT. MEMORIAL DRIVE
ELEV. 488.79

BENCH MARK
60D NAIL IN 34" PECAN TREE (TREE NO. 2314)
PAV. STA. 1+83. 138' RT. AUDOBON LANE
ELEV. 480.88

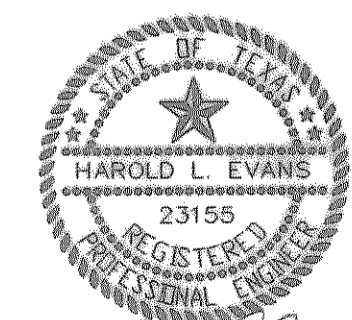
BENCH MARK
60D NAIL IN 18" PECAN TREE (TREE NO. 2114)
PAV. STA. 10+97 63.5' RT. AUDOBON LANE
ELEV. 501.54

AS BUILT

Winkelmann & Associates, Inc. hereby states that this
Plan, to the best of our knowledge is "As Built."
Modifications from the originally approved construction
documents have been made as per information provided by
the contractor. Winkelmann & Associates, Inc. does not
warrant as to the correctness or quality of construction as no
field inspection was performed.

[Signature]
WINKELMANN & ASSOCIATES, INC.

9-27-02
DATE Ph 2A



REVISION DESCRIPTION		DATE	SCALE	DESIGN	DRAWN
0020 PHASE 2, 0020 ST 21		2/1/01	1" = 40' 1" = 8'	H.L.E.	
<p>HAROLD L. EVANS CONSULTING ENGINEER P.O. BOX 28355 2331 CUS THOMASSON ROAD, SUITE 102 DALLAS, TEXAS 75228, (214) 328-8133</p>					<p>SHEET NO. 17 24</p>
<p>PROPOSED DRAINAGE LINE C AND P QUAIL RUN VALLEY NO. 2 CITY OF ROCKWALL</p>					<p>JOB NO. 0020</p>