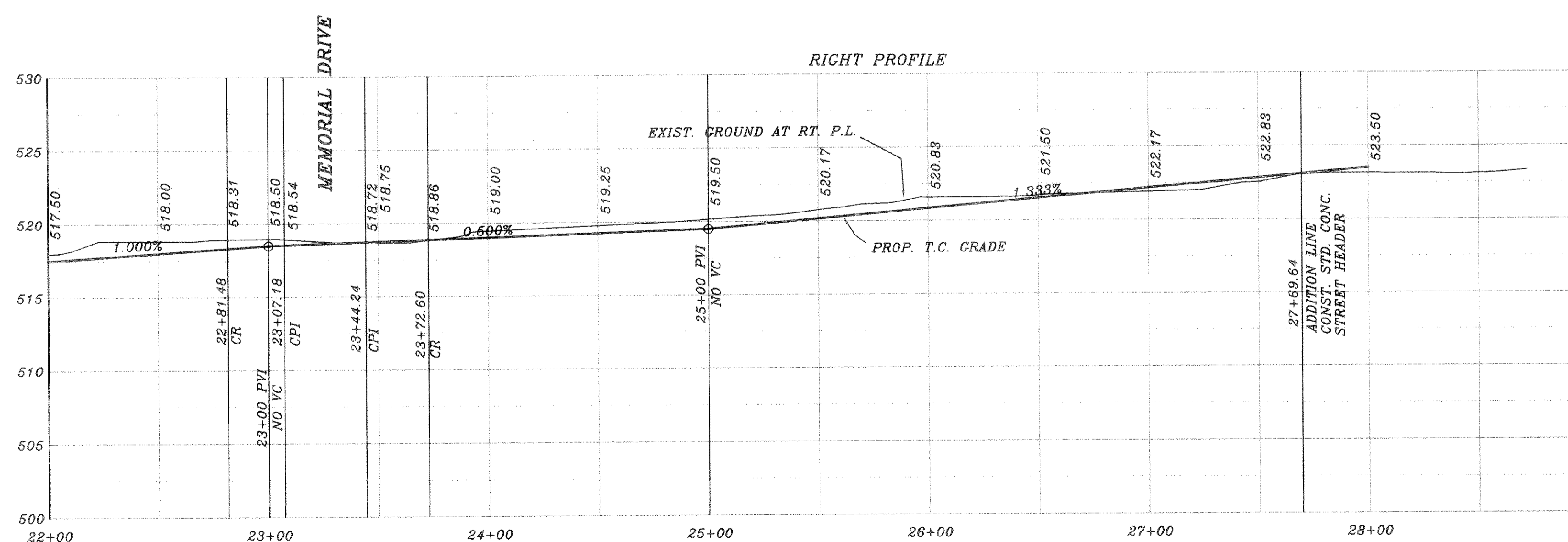
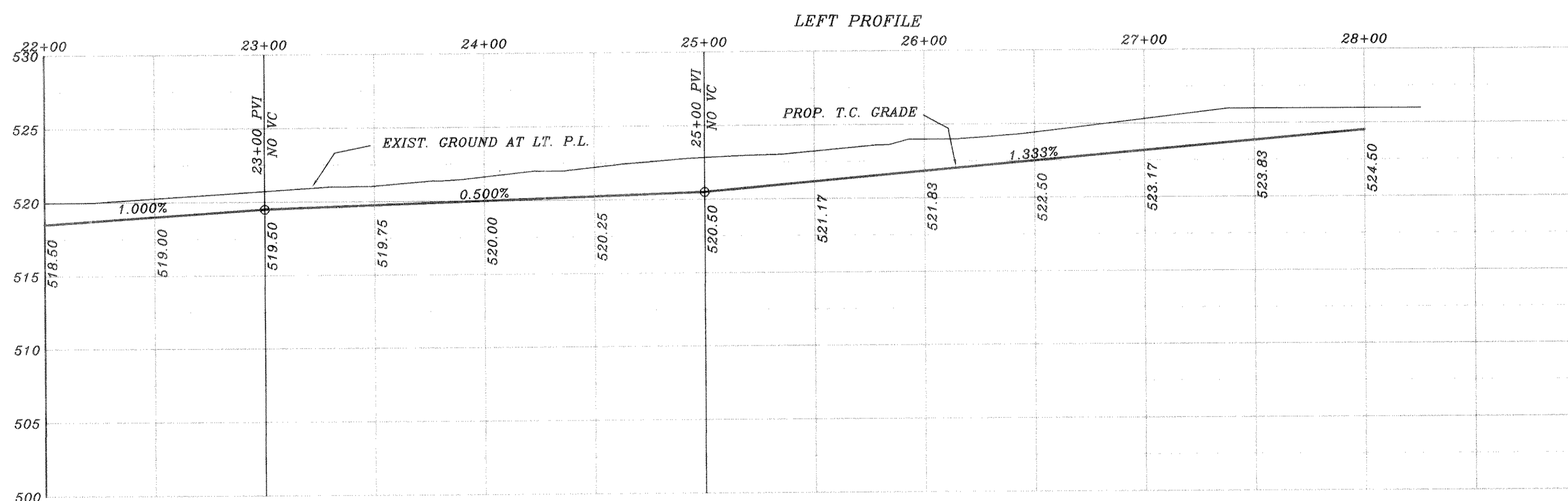
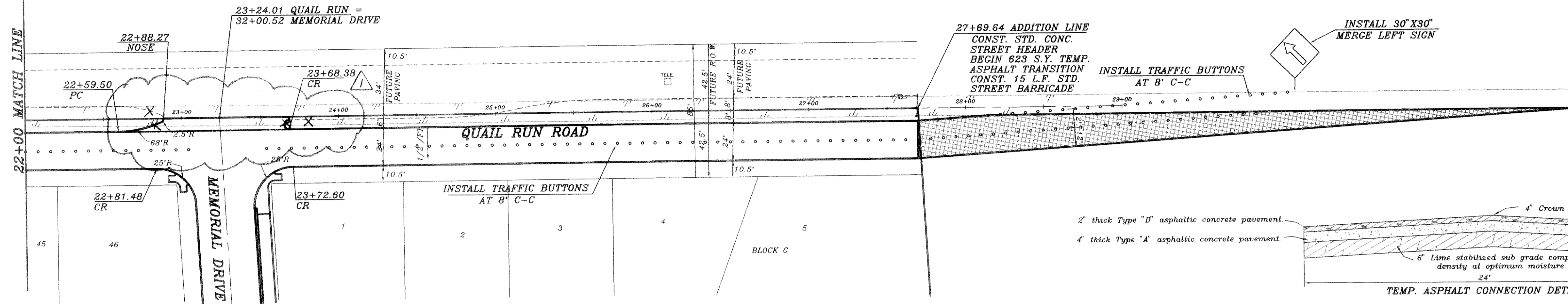


# PHASE 2A



ASBUILT

Winkelmann & Associates, Inc. hereby states that this plan, to the best of our knowledge is "As Built". Modifications from the originally approved construction documents have been made as per information provided by the contractor. Winkelmann & Associates, Inc. does not warrant as to the correctness or quality of construction or the responsibility for performance.

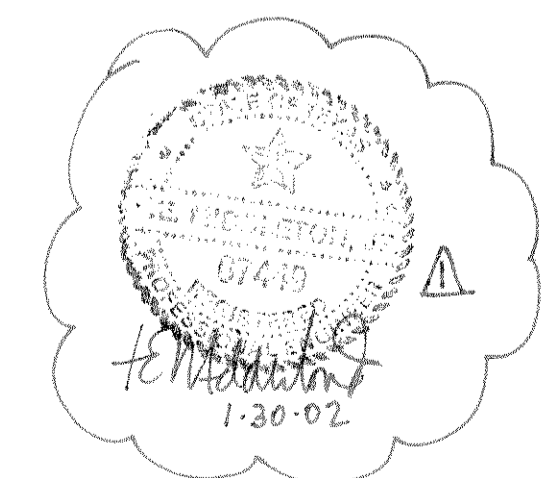
*Harold L. Evans* 9-27-02  
 WINKELMANN & ASSOCIATES, INC. LICENSE 19272 PH2A

BENCH MARK  
 SQUARE CUT IN CONCRETE AT BASE OF CONCRETE WALL AT S.W. CORNER OF SOUTH APPROACH TO BRIDGE OVER SQUABBLE CREEK ON HWY. 205  
 ELEV.: 472.41

BENCH MARK  
 60D NAIL IN 36" PECAN TREE (TREE NO. 2302)  
 PAV. STA. 8+30, 71' RT., MEMORIAL DRIVE  
 ELEV.: 466.79

BENCH MARK  
 60D NAIL IN 34" PECAN TREE (TREE NO. 2314)  
 PAV. STA. 1+83, 138' RT., AUDOBON LANE  
 ELEV.: 480.88

BENCH MARK  
 60D NAIL IN 18" PECAN TREE (TREE NO. 2114)  
 PAV. STA. 10+97 63.5' RT., AUDOBON LANE  
 ELEV.: 501.54



(X) MEDIAN OPENING IN QUAIL RUN ROAD NOT IN THIS CONTRACT REV PER 4th REVIEW 11/2/02 REV PER 3rd REVIEW 6/13/01 REV PER 2nd REVIEW 5/10/01	HAROLD L. EVANS CONSULTING ENGINEER P.O. BOX 28355 2331 CUS THOMASSON ROAD, SUITE 102 DALLAS, TEXAS 75228, (214) 328-8133
-----------------------------------------------------------------------------------------------------------------------------------------------------	---------------------------------------------------------------------------------------------------------------------------------------

REVISION DESCRIPTION	DATE	SCALE	DESIGN	DRAWN
		1" = 40'	H.L.E.	
		1" = 6"		

PROPOSED PAVING QUAIL RUN ROAD QUAIL RUN VALLEY NO. 2 CITY OF ROCKWALL			
---------------------------------------------------------------------------------	--	--	--

SHEET NO. 13
24
JOB NO. 0020