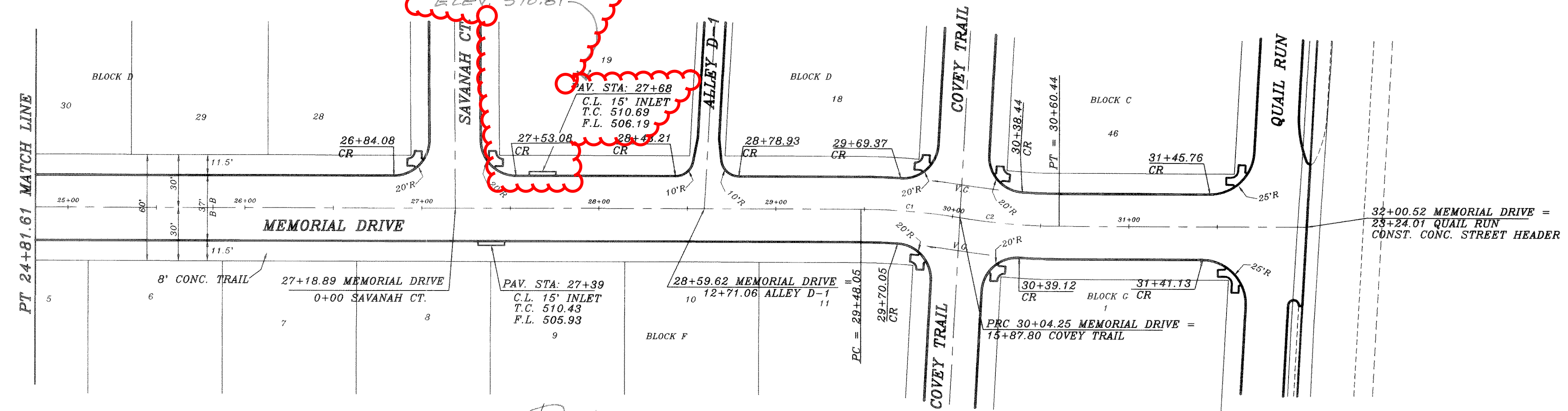


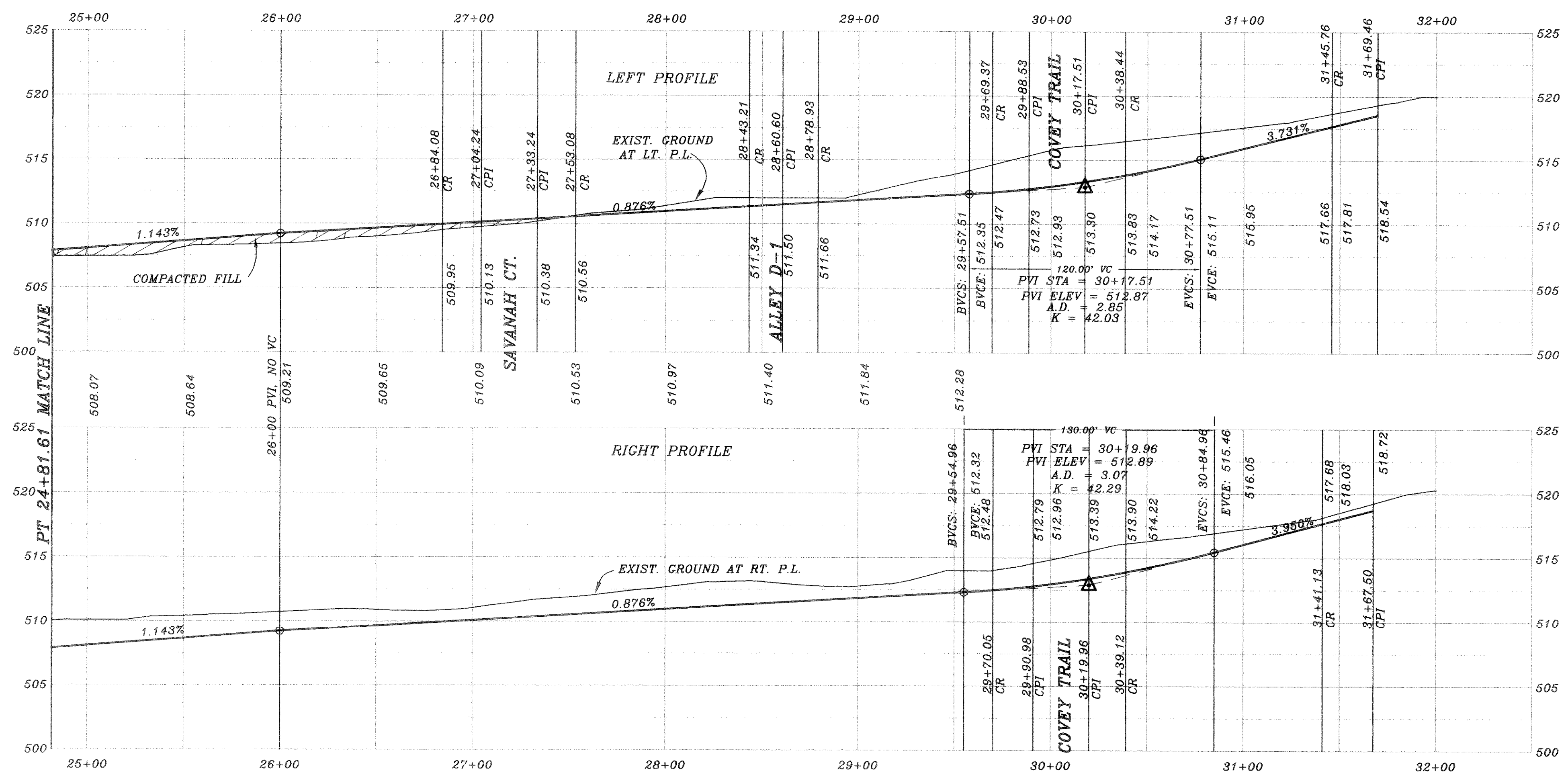
CURVE	RADIUS	LENGTH	TANGENT	CHORD	BEARING	DELTA
C1	350.00'	56.20'	28.16'	56.14'	S07°08'43" W	09°11'59"
C2	350.00'	56.20'	28.16'	56.14'	N01°08'43" E	09°11'59"

CITY OF ROCKWALL  
SURVEY MONUMENT  
N 7034644.5993  
E 2595676.1121  
ELEV 510.81

PHASE 2A



PHASE 2B



BENCH MARK  
SQUARE CUT IN CONCRETE AT BASE OF  
CONCRETE WALL AT S W CORNER OF  
SOUTH APPROACH TO BRIDGE OVER  
SQUIBBLE CREEK ON HWY. 205  
ELEV. 472.41

BENCH MARK  
60D NAIL IN 36" PECAN TREE (TREE NO. 2302)  
PAV. STA. 8+30, 71' RT. MEMORIAL DRIVE  
ELEV. 466.79

BENCH MARK  
60D NAIL IN 34" PECAN TREE (TREE NO. 2314)  
PAV. STA. 1+83, 138' RT. AUDOBON LANE  
ELEV. 480.88

BENCH MARK  
60D NAIL IN 18" PECAN TREE (TREE NO. 2114)  
PAV. STA. 10+97, 63.5' RT. AUDOBON LANE  
ELEV. 501.54

ASBUILT

Winkelmann & Associates, Inc. hereby states that this plan, to the best of our knowledge is "As Built." Modifications from the originally approved construction documents have been made as per information provided by the contractor. Winkelmann & Associates, Inc. does not hold inspection was performed.

*[Signature]*  
WINKELMANN & ASSOCIATES, INC. DATE 9-27-02 Ph 2A



REV	DATE
REV. PER 3rd CITY REVIEW	11/25/01
REV. PER 2nd CITY REVIEW	6/13/01
REV. PER CITY REVIEW	5/10/01
REV. PER CITY REVIEW	2/25/01

HAROLD L. EVANS  
CONSULTING ENGINEER  
P.O. BOX 28355  
2331 CUS THOMASSON ROAD, SUITE 102  
DALLAS, TEXAS 75228. (214) 328-8133

PROPOSED PAVING  
MEMORIAL DRIVE  
QUAIL RUN VALLEY NO. 2  
CITY OF ROCKWALL

SHEET NO.  
4  
24  
JOB NO.  
0020

REVISION DESCRIPTION	DATE	SCALE	DESIGN	DRAWN
0020, FRASER, 0020P23	2/1/01	1" = 40' 1" = 6'	H.L.E.	