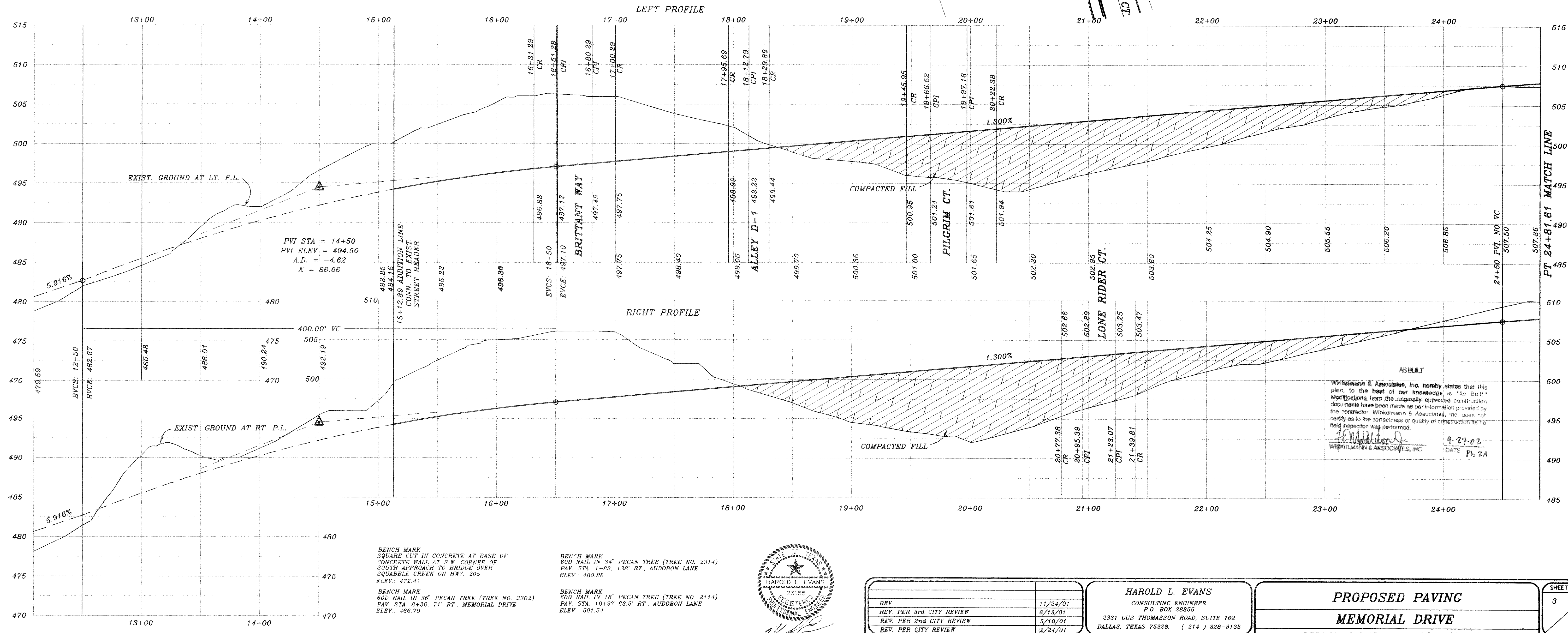
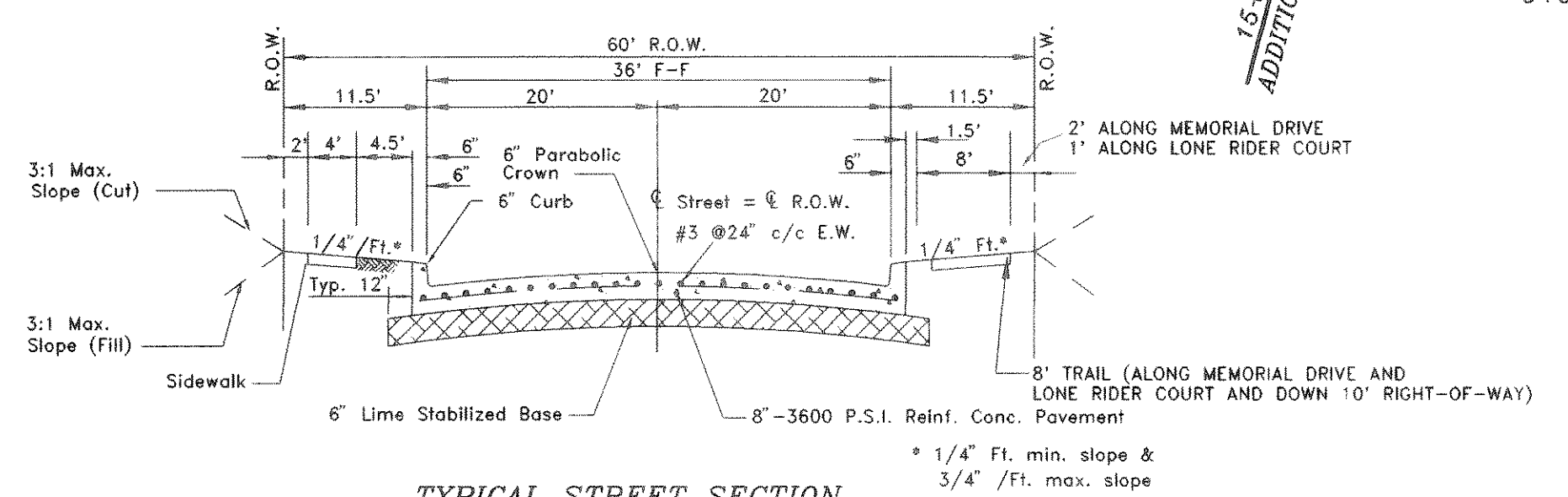
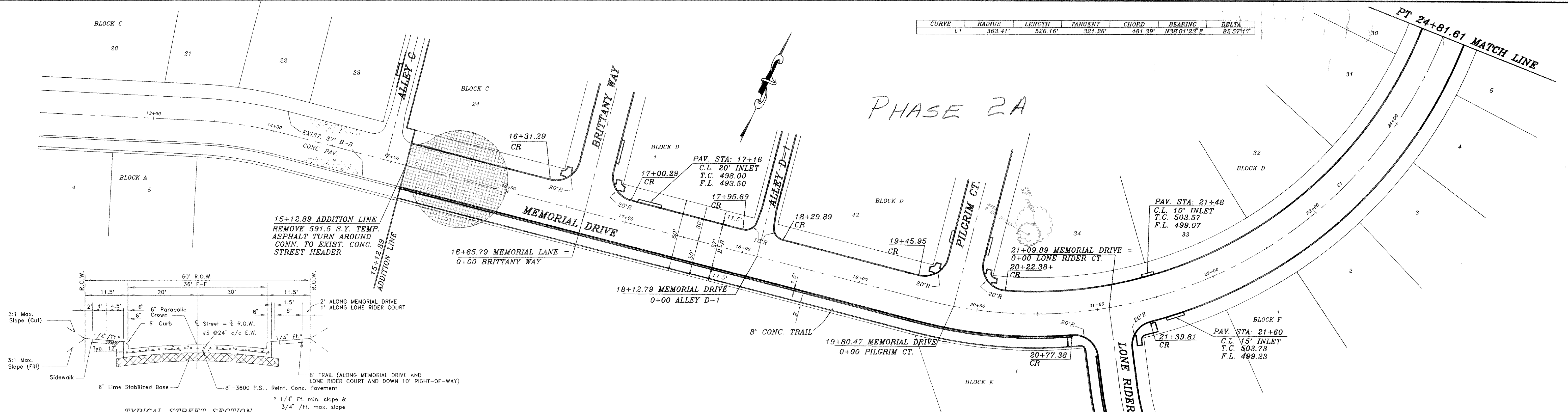


CURVE	RADIUS	LENGTH	TANGENT	CHORD	BEARING	DELTA
C1	363.41'	526.16'	321.26'	481.39'	N38°01'23"E	82°57'17"

PHASE 2A



AS BUILT  
 Winkelman & Associates, Inc. hereby states that this plan, to the best of our knowledge is "As Built." Modifications from the originally approved construction documents have been made as per information provided by the contractor. Winkelman & Associates, Inc. does not certify as to the correctness or quality of contractor as no field inspection was performed.  
 HAROLD L. EVANS  
 WINKELMAN & ASSOCIATES, INC. DATE 4-27-02 Ph 2A

BENCH MARK  
 SQUARE CUT IN CONCRETE AT BASE OF CONCRETE WALL AT S.W. CORNER OF SOUTH APPROACH TO BRIDGE OVER SQUABBLE CREEK ON HWY. 205  
 ELEV. = 472.41'  
 BENCH MARK  
 60D NAIL IN 36" PECAN TREE (TREE NO. 2302)  
 PAV. STA. 8+30. 71' RT. MEMORIAL DRIVE  
 ELEV. = 466.79'  
 BENCH MARK  
 60D NAIL IN 34" PECAN TREE (TREE NO. 2314)  
 PAV. STA. 1+83. 138' RT. AUDOBON LANE  
 ELEV. = 480.88'  
 BENCH MARK  
 60D NAIL IN 18" PECAN TREE (TREE NO. 2114)  
 PAV. STA. 10+97. 63.5' RT. AUDOBON LANE  
 ELEV. = 501.54'



REVISION DESCRIPTION	DATE	SCALE	DESIGN	DRAWN
REV.	11/24/01	1" = 40'	H.L.E.	
REV. PER 3rd CITY REVIEW	6/13/01	1" = 6'		
REV. PER 2nd CITY REVIEW	5/10/01			
REV. PER CITY REVIEW	2/24/01			

HAROLD L. EVANS  
 CONSULTING ENGINEER  
 P.O. BOX 28555  
 2331 CUS THOMASSON ROAD, SUITE 102  
 DALLAS, TEXAS 75228, (214) 328-8133

PROPOSED PAVING  
 MEMORIAL DRIVE  
 QUAIL RUN VALLEY NO. 2  
 CITY OF ROCKWALL

SHEET NO.  
 3  
 24  
 JOB NO.  
 0020