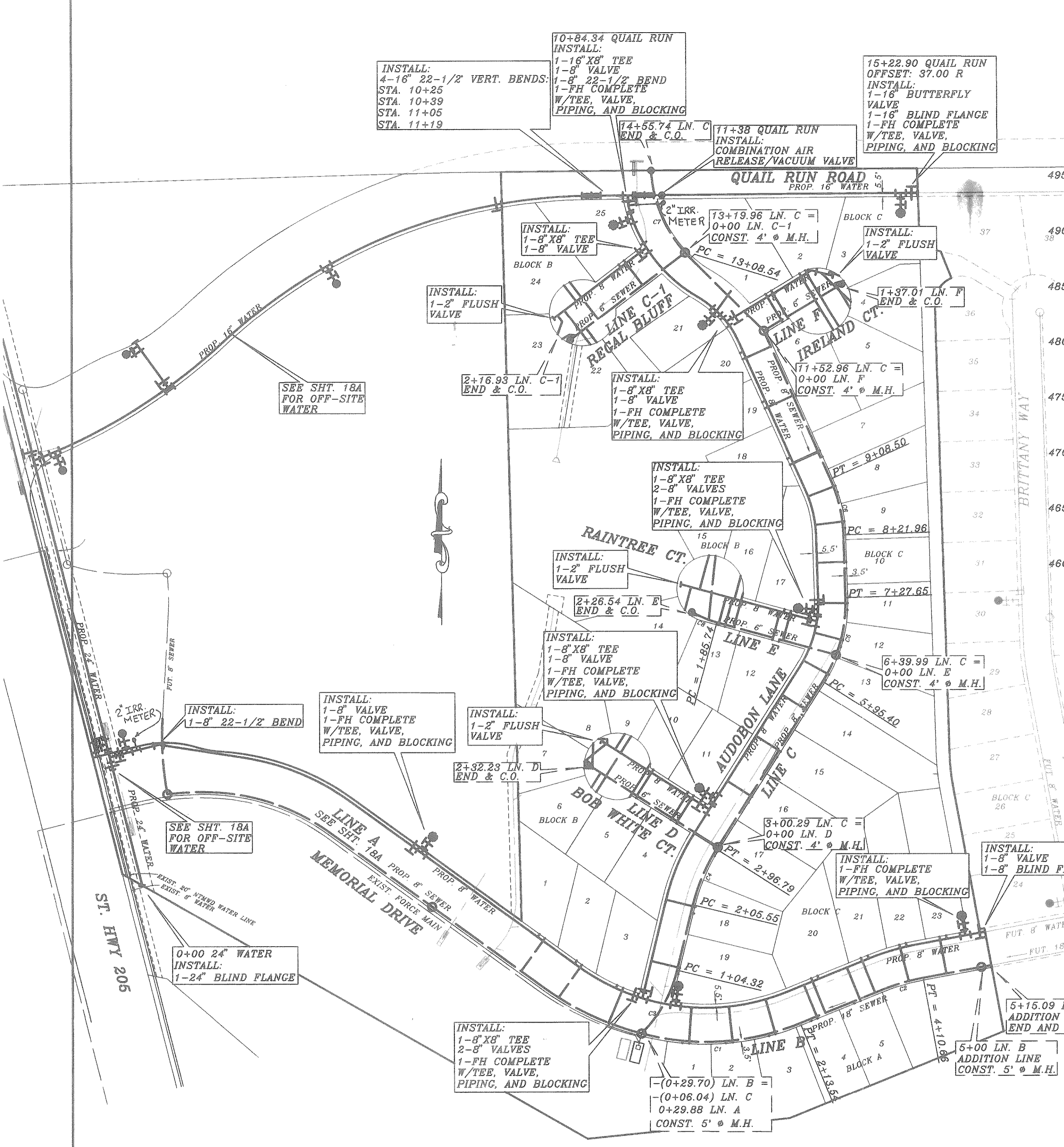


16" WATER LINE IN QUAIL RUN
 GRADES SHOWN ARE TOP OF PIPE
 48" MIN. BETWEEN TOP OF CURB AND TOP OF PIPE
 STATIONING SHOWN IS PAVING STATIONING
 NOTE: VERTICAL BENDS SHALL HAVE
 MEGA-LUG OR APPROVED EQUAL
 INSTALL MEGA-LUGS ONE JOINT
 EACH DIRECTION FROM BENDS.



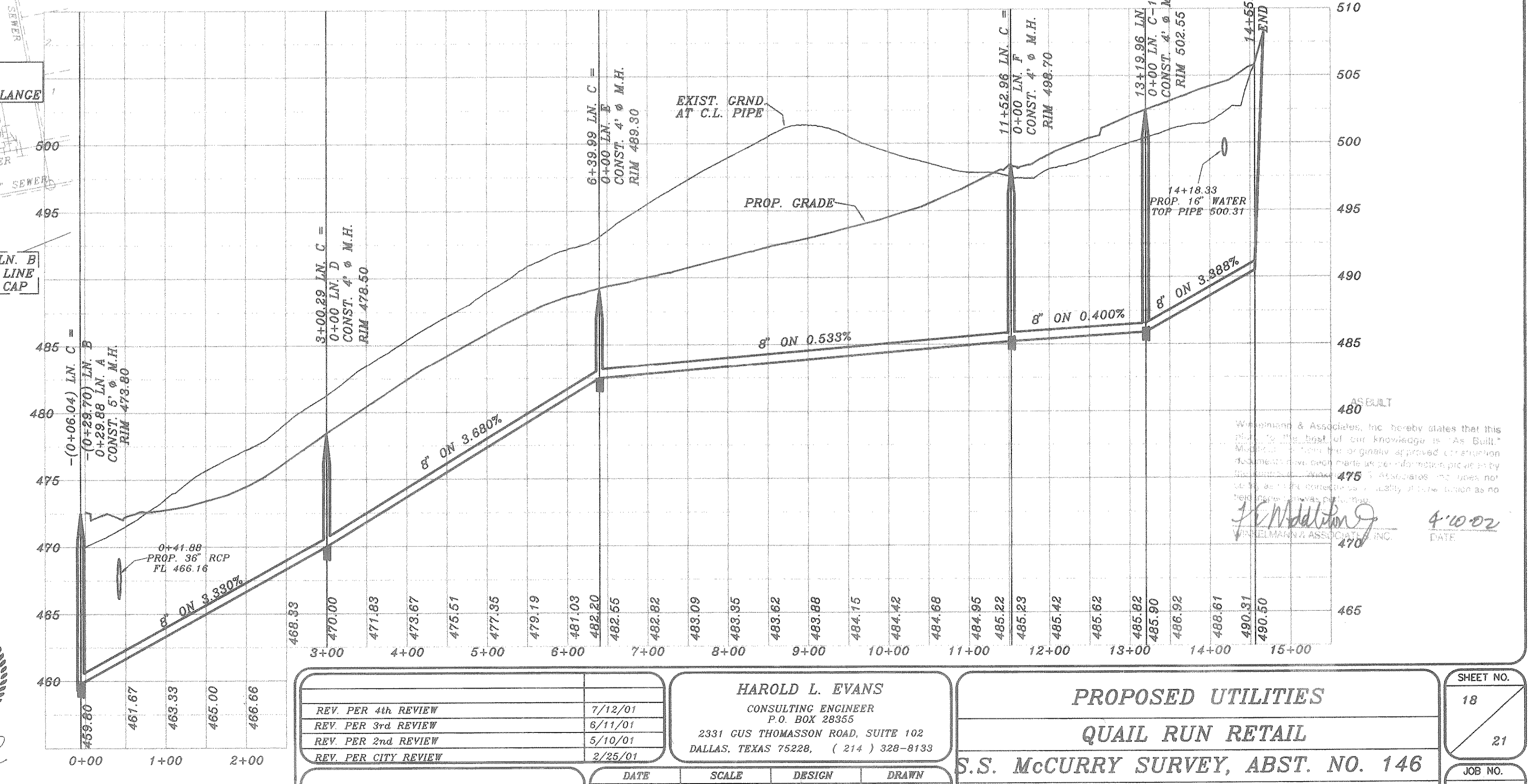
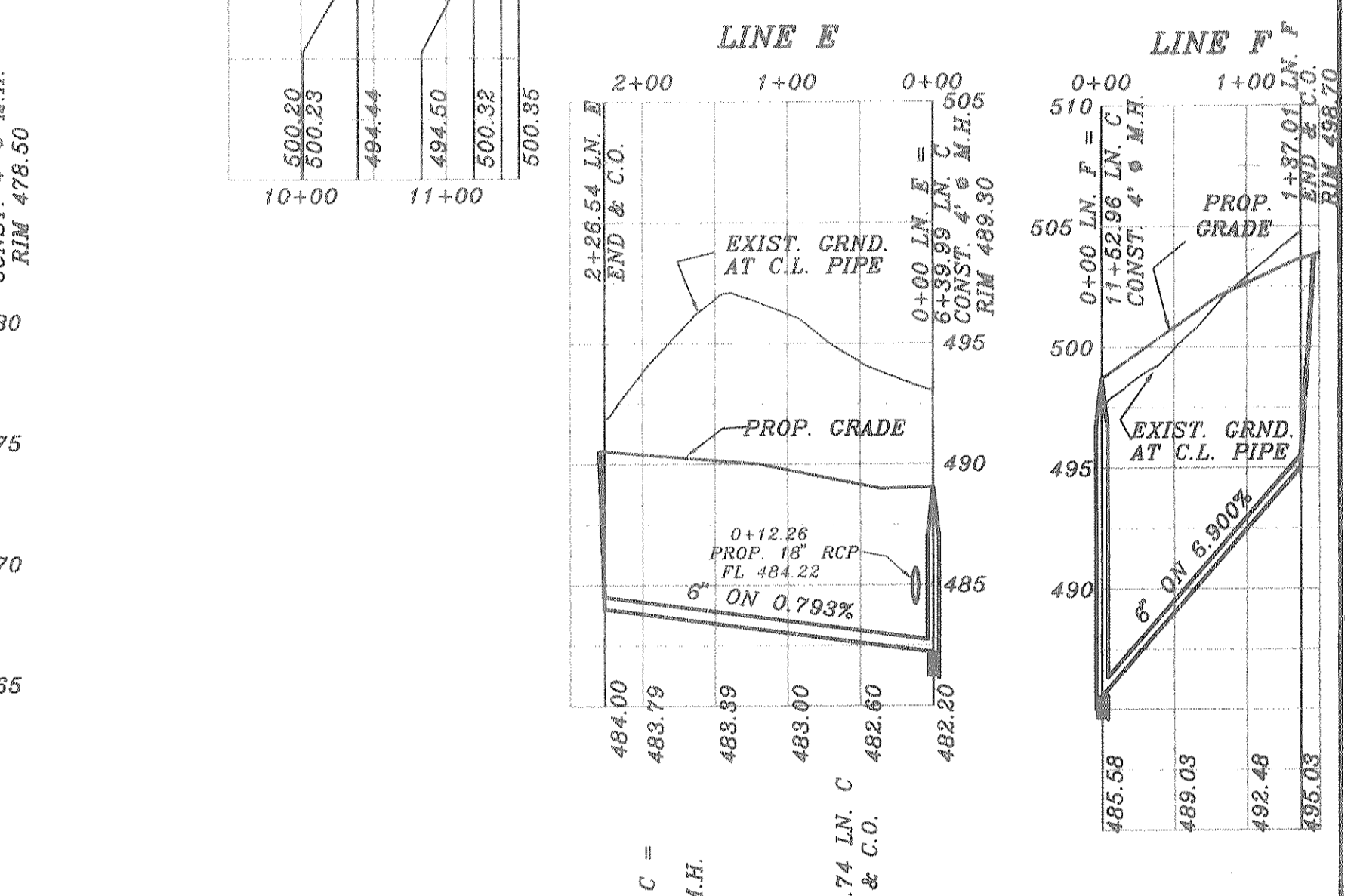
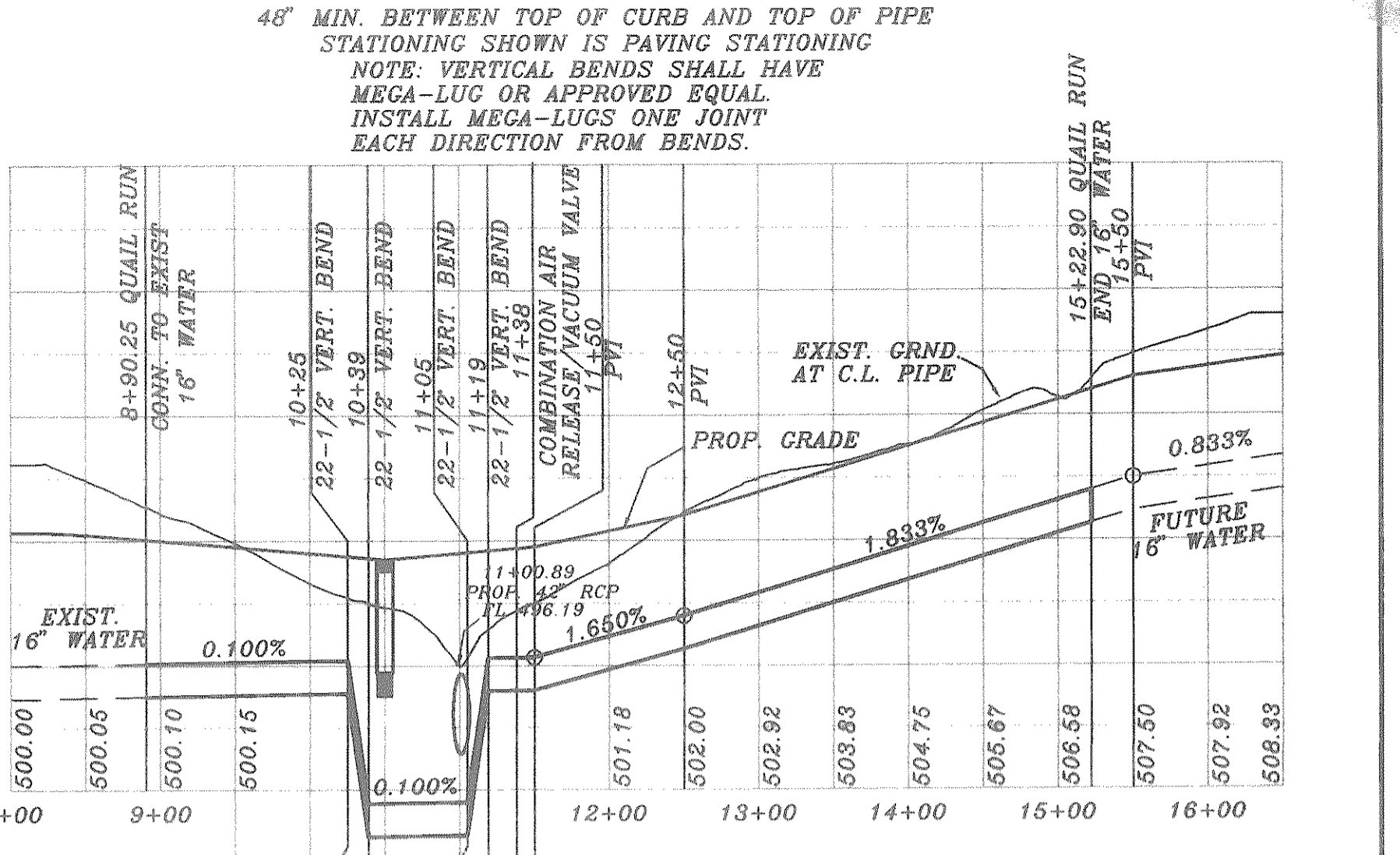
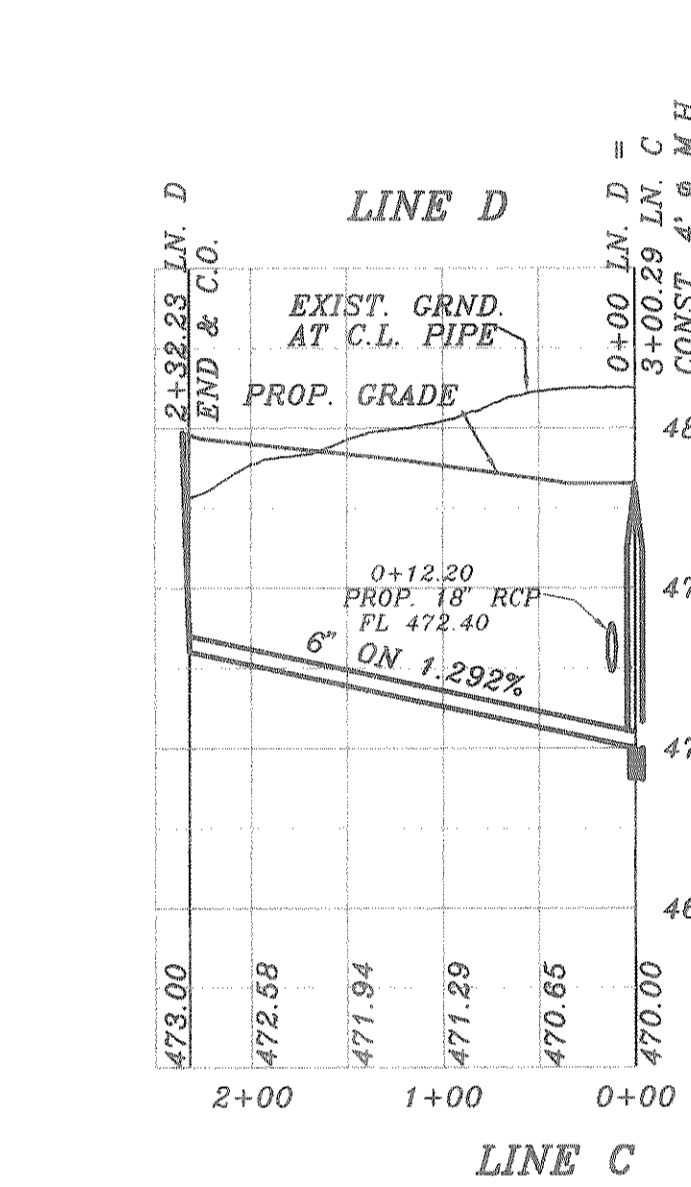
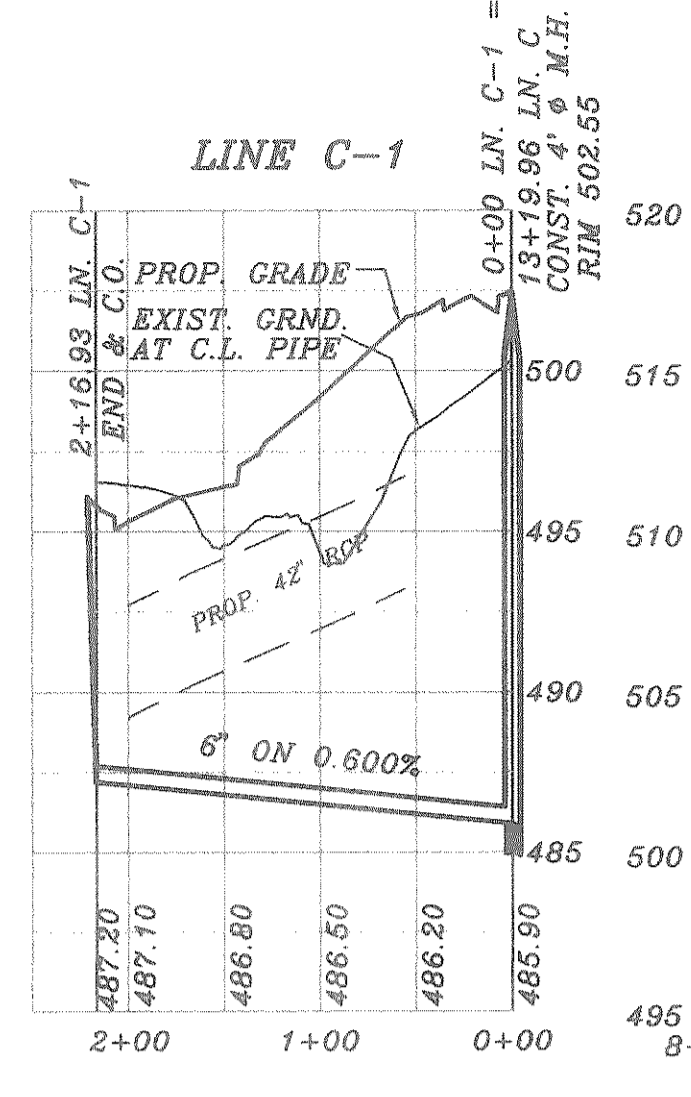
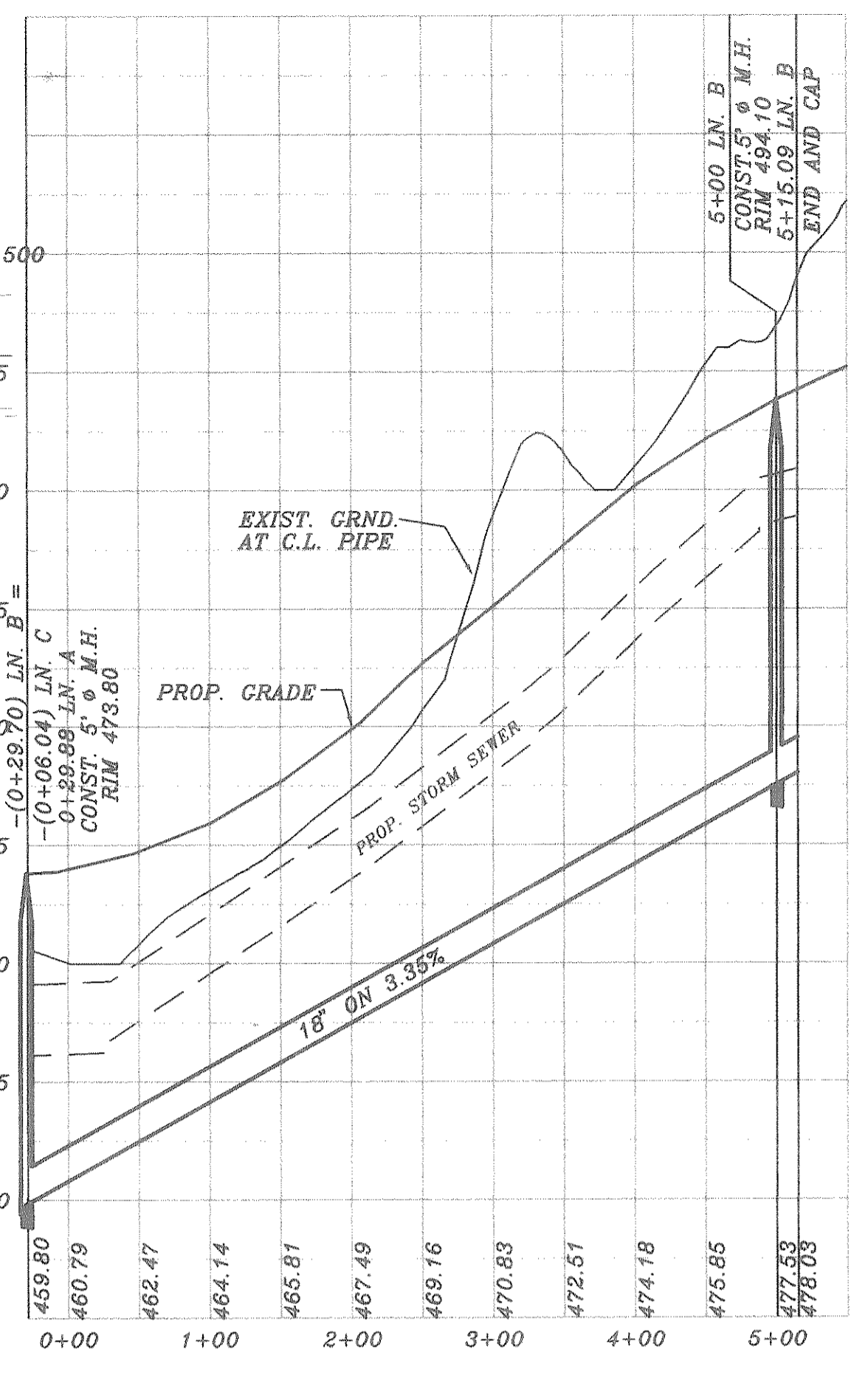
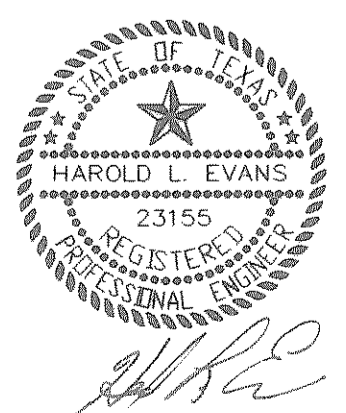
CURVE	RADIUS	LENGTH	TANGENT	CHORD	BEARING	DELTA
C1	376.50'	243.24'	126.03'	239.03'	N86°24'29" E	37°00'57"
C2	323.50'	65.50'	32.26'	65.39'	S73°42'01" W	17°38'01"
C3	200.00'	110.36'	55.22'	108.97'	N29°28'43" E	31°38'58"
C4	278.50'	91.24'	46.03'	90.84'	S23°03'22" W	18°46'18"
C5	221.50'	132.25'	66.16'	130.30'	N15°20'14" E	34°12'35"
C6	221.50'	86.54'	43.23'	85.99'	N12°57'37" W	22°23'07"
C7	200.00'	142.20'	71.11'	143.90'	S24°01'41" E	42°10'06"
C8	150.00'	40.80'	20.53'	40.68'	S66°52'11" E	15°35'10"

BENCH MARK
 SQUARE CUT IN CONCRETE AT BASE OF
 CONCRETE WALL AT S.W. CORNER OF
 SOUTH APPROACH TO BRIDGE OVER
 SQUABLE CREEK ON HWY. 205
 ELEV. 472.41

BENCH MARK
 60D NAIL IN 36" PECAN TREE (TREE NO. 2302)
 PAV. STA. 8+30.71' RT. MEMORIAL DRIVE
 ELEV. 466.79

BENCH MARK
 60D NAIL IN 34" PECAN TREE (TREE NO. 2314)
 PAV. STA. 1+63.138' RT. AUDUBON LANE
 ELEV. 490.88

BENCH MARK
 60D NAIL IN 18" PECAN TREE (TREE NO. 2114)
 PAV. STA. 10+97.635' RT. AUDUBON LANE
 ELEV. 501.54



REV.	PER	DATE
1	4th REVIEW	7/12/01
2	3rd REVIEW	6/11/01
3	2nd REVIEW	5/10/01
4	CITY REVIEW	2/26/01

HAROLD L. EVANS
 CONSULTING ENGINEER
 2331 CUS THOMASSON ROAD, SUITE 102
 DALLAS, TEXAS 75228, (214) 328-8133

PROPOSED UTILITIES
QUAIL RUN RETAIL
S.S. McCURRY SURVEY, ABST. NO. 146
CITY OF ROCKWALL

SHEET NO.	18
JOB NO.	0020

Washington & Associates, Inc. hereby states that this plan is the best of our knowledge in accordance with the standards of the profession of civil engineering. We warrant that the information furnished herein is true and correct to the best of our knowledge and belief. We warrant that the information furnished herein is true and correct to the best of our knowledge and belief. We warrant that the information furnished herein is true and correct to the best of our knowledge and belief.

[Signature]
 DATE: 4/20/02