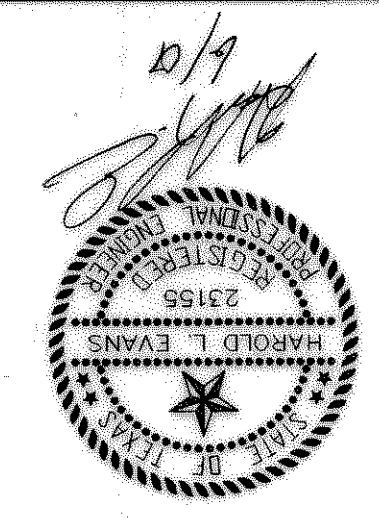
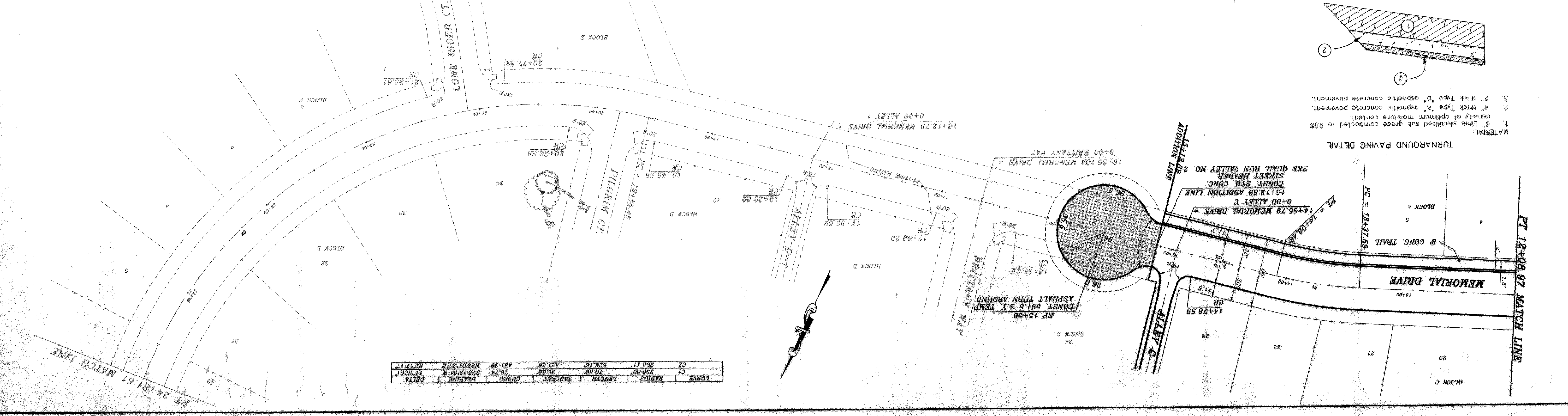
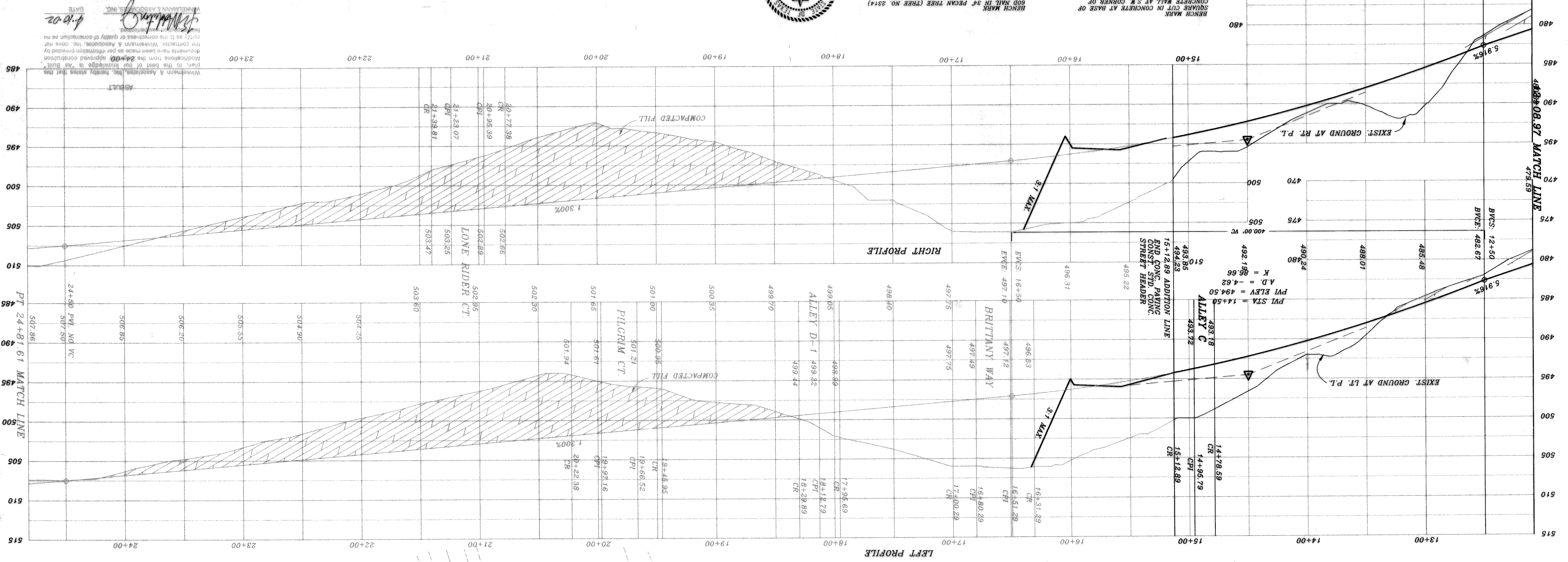


JOB NO. 0020	CITY OF ROCKWALL	
	QUAIL RUN VALLEY NO. 1	
SHEET NO. 21	PROPOSED PAVING	
	MEMORIAL DRIVE	
HAROLD L. EVANS CONSULTING ENGINEER 2391 GUS THOMASSON ROAD, SUITE 102 DALLAS, TEXAS 75228 (214) 329-9133		
DATE 11/6/00	SCALE 1" = 6'	REVISION DESCRIPTION
DESIGN H.L.E.	DRAWN	REV. PER CITY REVIEW
DATE 5/5/01	DATE 2/24/01	REV. PER 2ND CITY REVIEW
DATE 6/11/01		REV. PER 3RD CITY REVIEW



BENCH MARK
 800 MALT IN 38' PECAN TREE (TREE NO. 2114)
 PAV. STA. 10+97.63 S. RT. ADDOBON LANE
 ELEV.: 501.54
 BENCH MARK
 800 MALT IN 48' PECAN TREE (TREE NO. 2314)
 PAV. STA. 1+83.138 RT. ADDOBON LANE
 ELEV.: 480.88
 BENCH MARK
 800 MALT IN 38' PECAN TREE (TREE NO. 2302)
 PAV. STA. 8+30.71 RT. MEMORIAL DRIVE
 ELEV.: 486.79



- TURNAROUND PAVING DETAIL
1. 6" Lime stabilized sub grade compacted to 95% density of optimum moisture content.
 2. 4" thick Type 'A' asphaltic concrete pavement.
 3. 2" thick Type 'D' asphaltic concrete pavement.

CURVE	RADIUS	LENGTH	TANGENT	CHORD	BEARING	DELTA
C1	350.00'	70.74'	55.55'	70.74'	S73.42°01'W	17.36°01'
C2	363.41'	526.16'	321.26'	481.39'	N38°01'23"E	82.57'17"

Winkelman & Associates, Inc. hereby certifies that the plan, to the best of our knowledge is as built.
 The contractor, Winkelman & Associates, Inc. does not warrant the quality of construction as no documents have been made as per information provided by Winkelman & Associates, Inc.

Winkelman & Associates, Inc.
 4-10-02