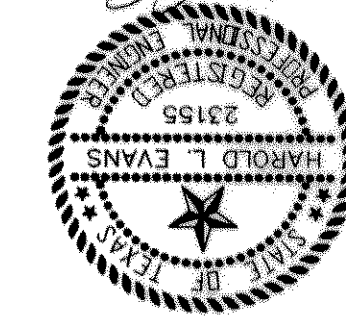


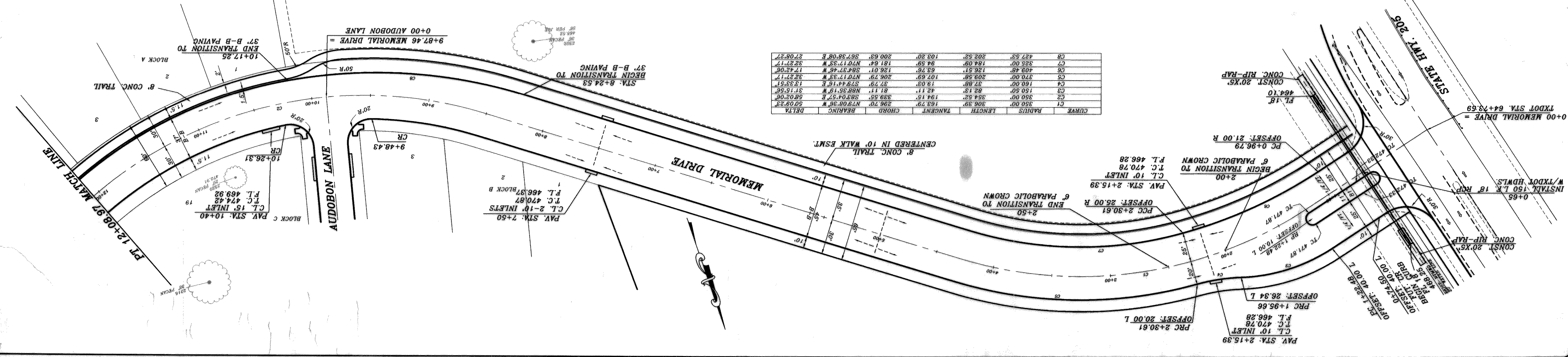
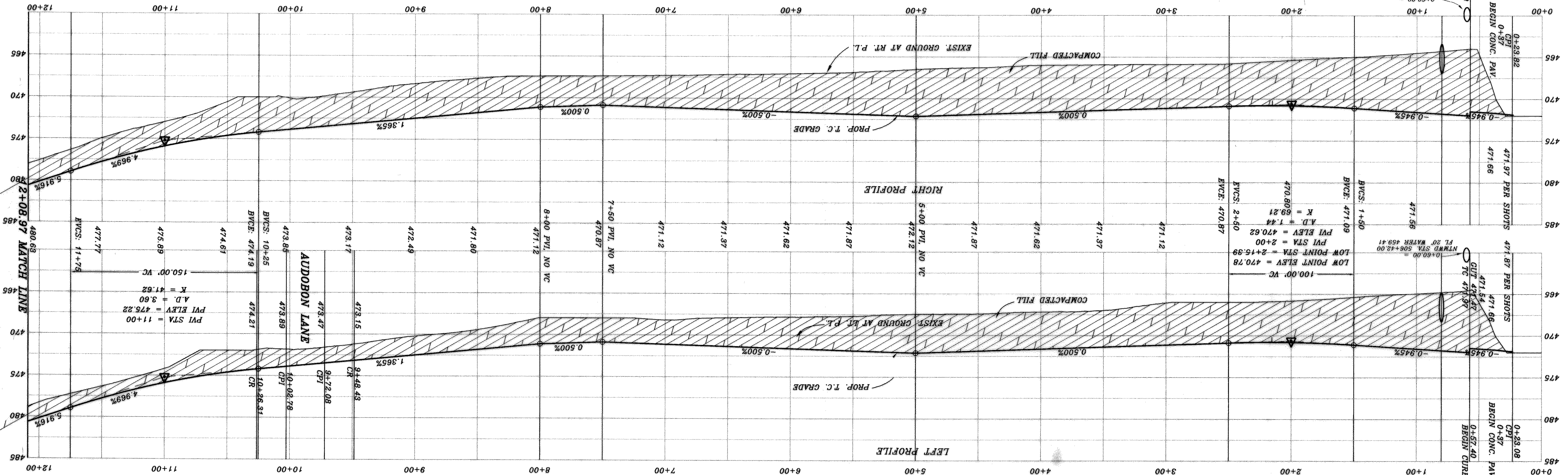
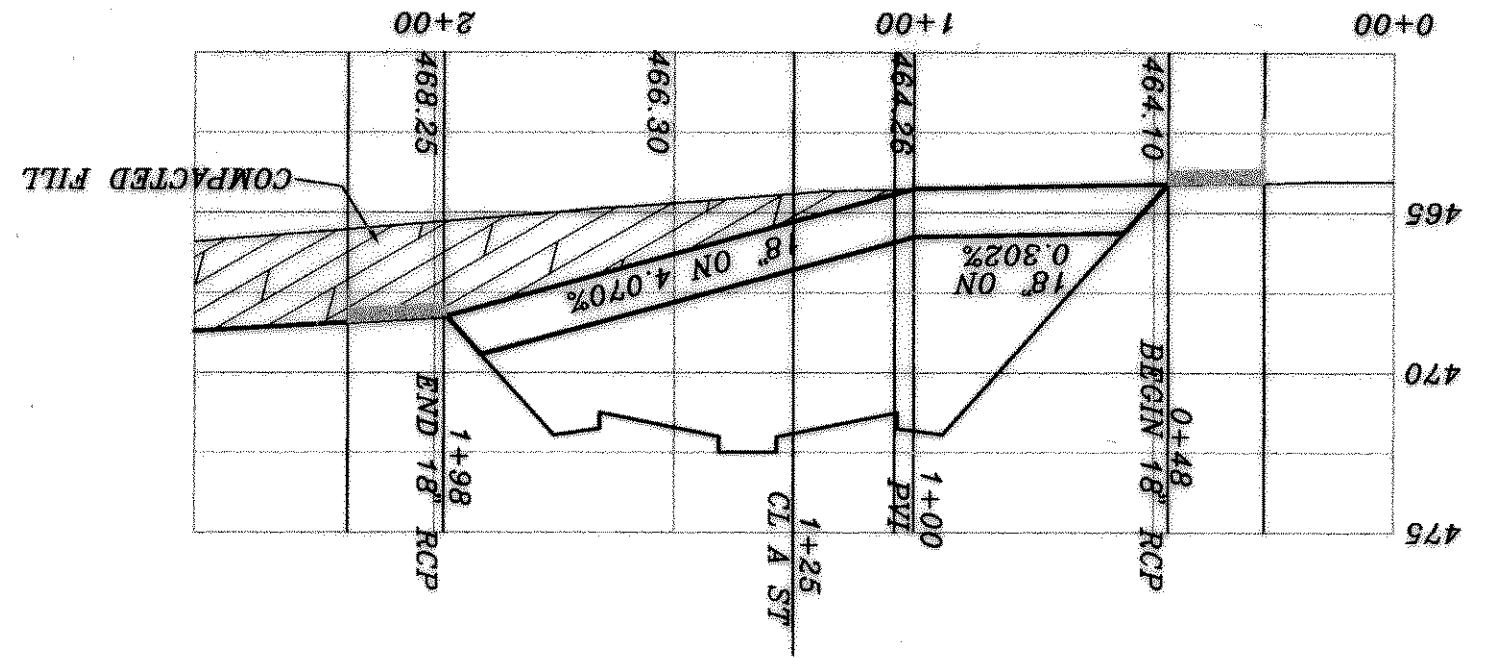
| | | |
|---|------------------------|---------------------------|
| JOB NO. 0020 | CITY OF ROCKWALL | |
| | QUAIL RUN VALLEY NO. 1 | |
| SHEET NO. 21 | MEMORIAL DRIVE | |
| | PROPOSED PAVING | |
| DATE 11/6/00 | SCALE 1" = 40' | DESIGN HAROLD L. EVANS |
| | DATE 2/24/01 | DESIGN HAROLD L. EVANS |
| REVISION DESCRIPTION REV PER 2ND CITY REVIEW 3/5/01 2331 GUS THOMAS ROAD, SUITE 102 P.O. BOX 2855 CONSULTING ENGINEER HAROLD L. EVANS | | |



DATE: 11/6/00
 HAROLD L. EVANS
 CONSULTING ENGINEER

BRNCH MARK
 SQUARE CTR IN CONCRETE AT BASE OF
 CONCRETE WALL AT S.W. CORNER OF
 SOUTH APPROACH TO BRIDGE OVER
 SQUABLE CREEK ON HWY. 205
 ELEV.: 472.41
 BRNCH MARK
 600 MAIL IN 18' PECAN TREE (TREE NO. 2114)
 PAV. STA. 8+30.71 RT. MEMORIAL DRIVE
 ELEV.: 466.79
 BRNCH MARK
 600 MAIL IN 18' PECAN TREE (TREE NO. 2114)
 PAV. STA. 10+97.63 S. AUDOBON LANE
 ELEV.: 501.54

BRNCH MARK
 600 MAIL IN 18' PECAN TREE (TREE NO. 2114)
 PAV. STA. 1+83.138 RT. AUDOBON LANE
 ELEV.: 480.88
 BRNCH MARK
 600 MAIL IN 18' PECAN TREE (TREE NO. 2114)
 PAV. STA. 10+97.63 S. AUDOBON LANE
 ELEV.: 501.54



| CURVE | RADIUS | LENGTH | CHORD | BEARING | DELTA |
|-------|--------|--------|--------|-------------|----------|
| C1 | 350.00 | 306.39 | 162.79 | N79.06.36 W | 60.02.33 |
| C2 | 350.00 | 354.52 | 194.15 | S83.04.57 E | 66.02.06 |
| C3 | 150.50 | 82.13 | 42.11 | N88.35.19 W | 31.15.56 |
| C4 | 150.50 | 37.80 | 19.03 | S74.41.15 E | 13.32.17 |
| C5 | 370.00 | 209.59 | 107.69 | N71.73.38 W | 32.27.17 |
| C6 | 409.48 | 126.51 | 63.76 | S84.37.46 W | 17.42.06 |
| C7 | 325.00 | 184.09 | 94.59 | N70.17.33 W | 32.27.17 |
| C8 | 427.53 | 202.52 | 103.20 | S67.39.08 E | 27.08.27 |