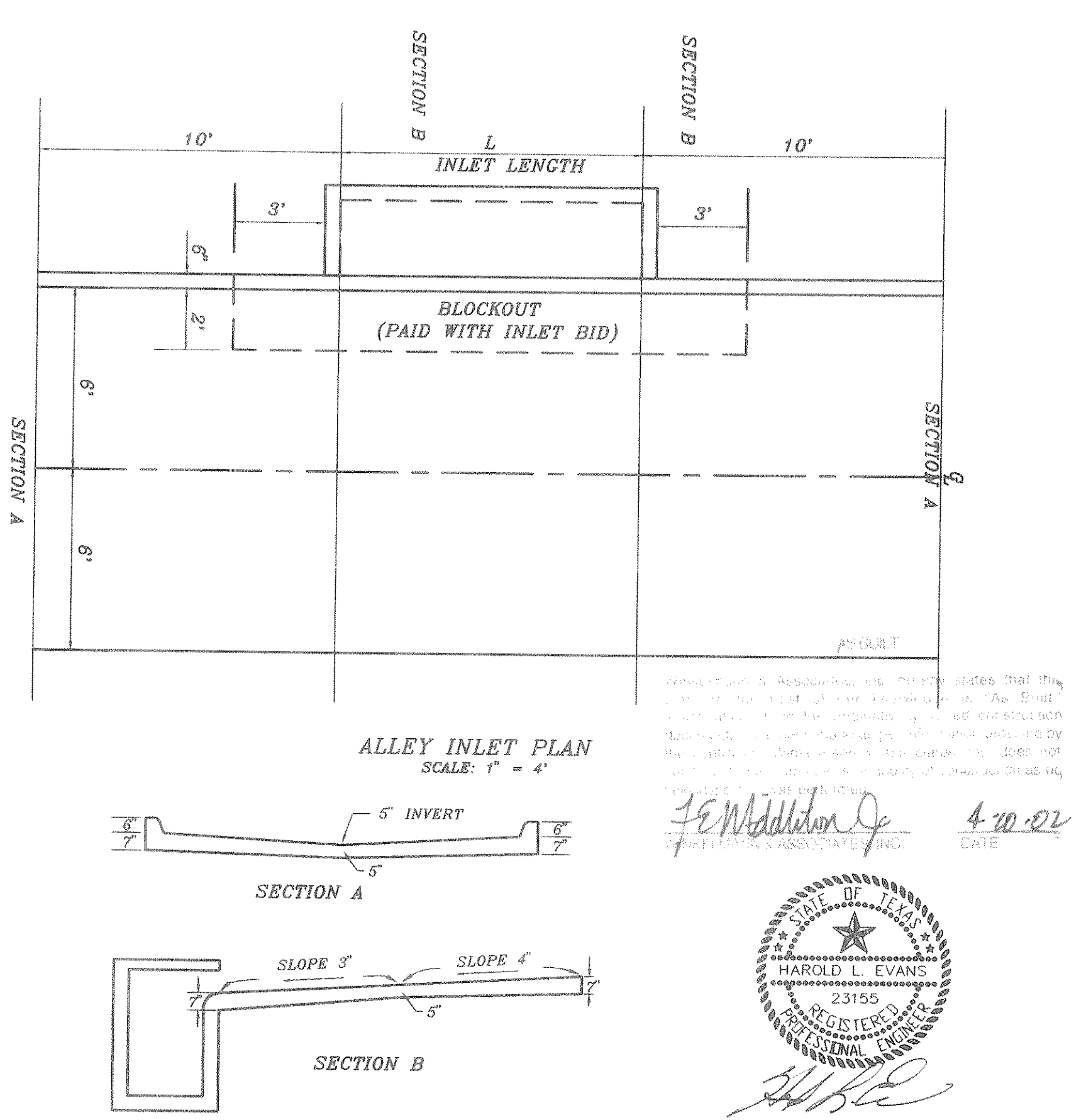
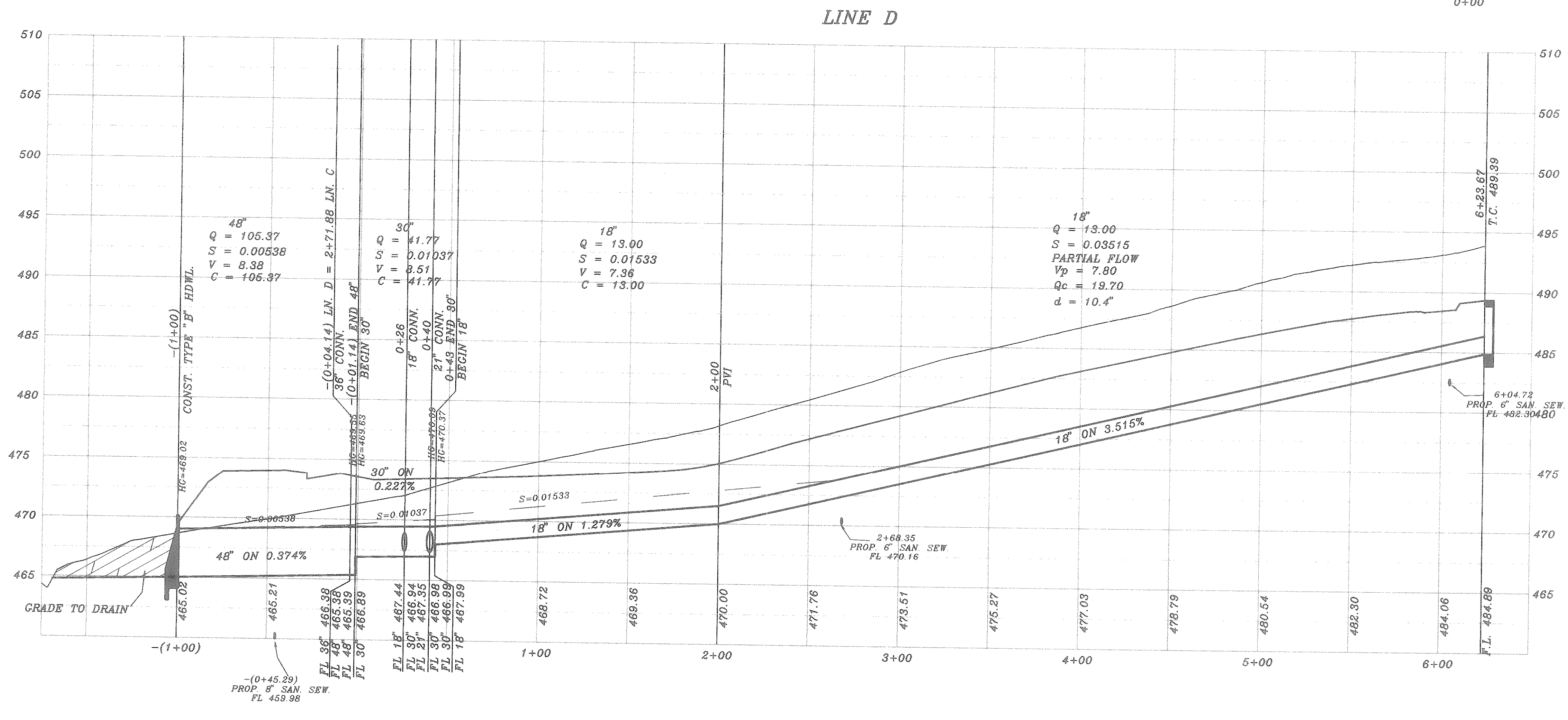
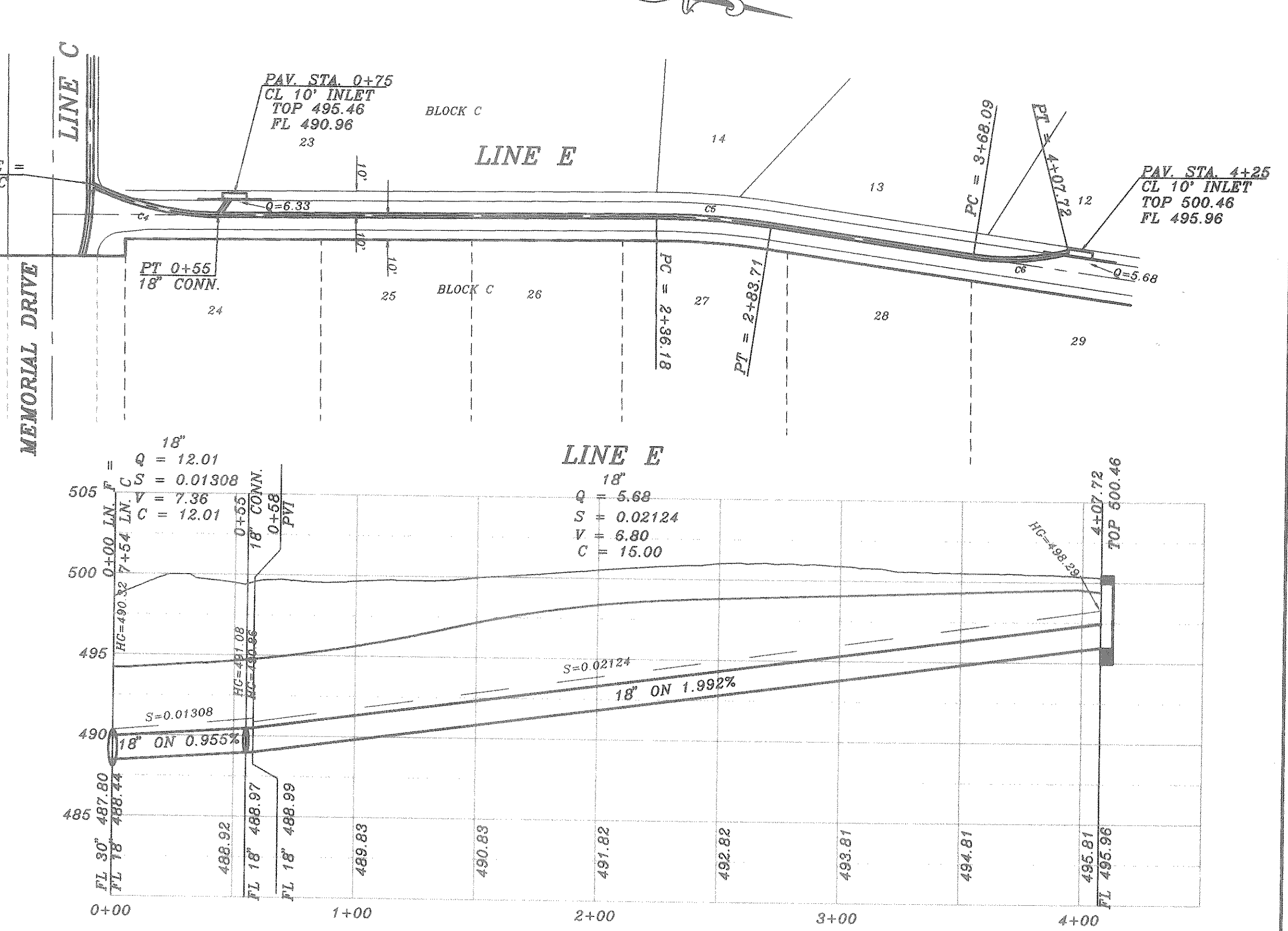
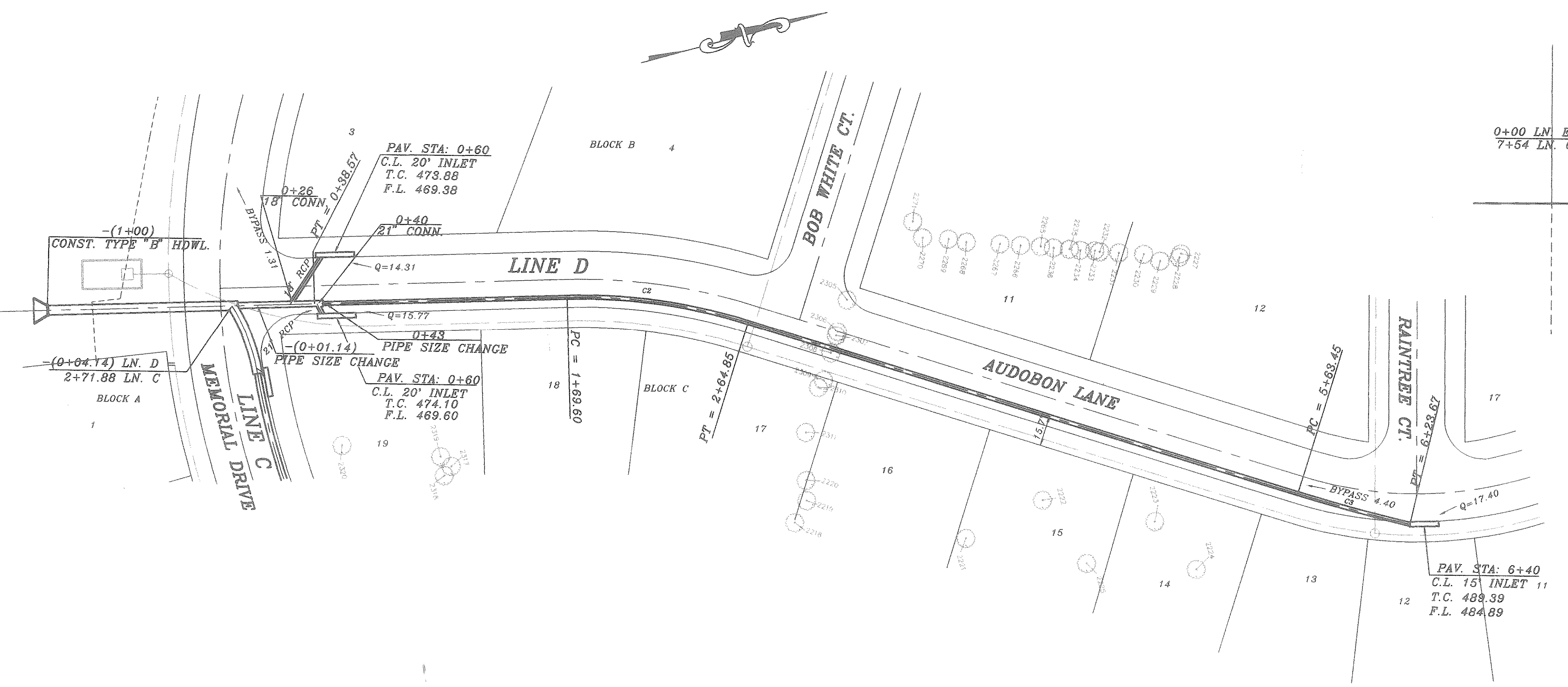


CURVE	RADIUS	LENGTH	TANGENT	CHORD	BEARING	DELTA
C2	290.70'	85.24'	48.05'	34.83'	S23°03'22" W	18°46'17"
C3	917.48'	60.22'	30.12'	60.21'	N30°33'42" E	08°43'38"
C4	117.46'	56.00'	28.01'	54.50'	N02°54'48" E	26°49'35"
C5	311.88'	47.53'	23.81'	47.48'	S06°08'01" E	08°43'55"
C6	100.00'	39.63'	20.08'	39.37'	N13°07'14" W	22°42'20"



ALLEY INLET PLAN
SCALE: 1" = 4'

SECTION A
SECTION B

4/10/02 DATE

BENCH MARK
SQUARE CUT IN CONCRETE AT BASE OF
CONCRETE WALL AT S.W. CORNER OF
SOUTH APPROACH TO BRIDGE OVER
SQUABBLE CREEK ON HWY 205
ELEV.: 472.41

BENCH MARK
60D NAIL IN 36" PECAN TREE (TREE NO. 2302)
PAV. STA. 8+30, 71' RT., MEMORIAL DRIVE
ELEV.: 466.79

BENCH MARK
60D NAIL IN 3.5" PECAN TREE (TREE NO. 2314)
PAV. STA. 1+80, 138' RT., AUDOBON LANE
ELEV.: 480.88

BENCH MARK
60D NAIL IN 18" PECAN TREE (TREE NO. 2114)
PAV. STA. 10+87 63.5' RT., AUDOBON LANE
ELEV.: 501.54

HAROLD L. EVANS CONSULTING ENGINEER P.O. BOX 28355 2331 CUS THOMASSON ROAD, SUITE 102 DALLAS, TEXAS 75228. (214) 328-8133		SHEET NO. 16 21 JOB NO. 0020
REV. PER CITY REVIEW 2/24/01	DATE 11/6/00	SCALE 1" = 40' 1" = 6'
REVISION DESCRIPTION 00203TMS	DESIGN H.L.E.	DRAWN

PROPOSED DRAINAGE
LINE D
QUAIL RUN VALLEY NO. 1
CITY OF ROCKWALL