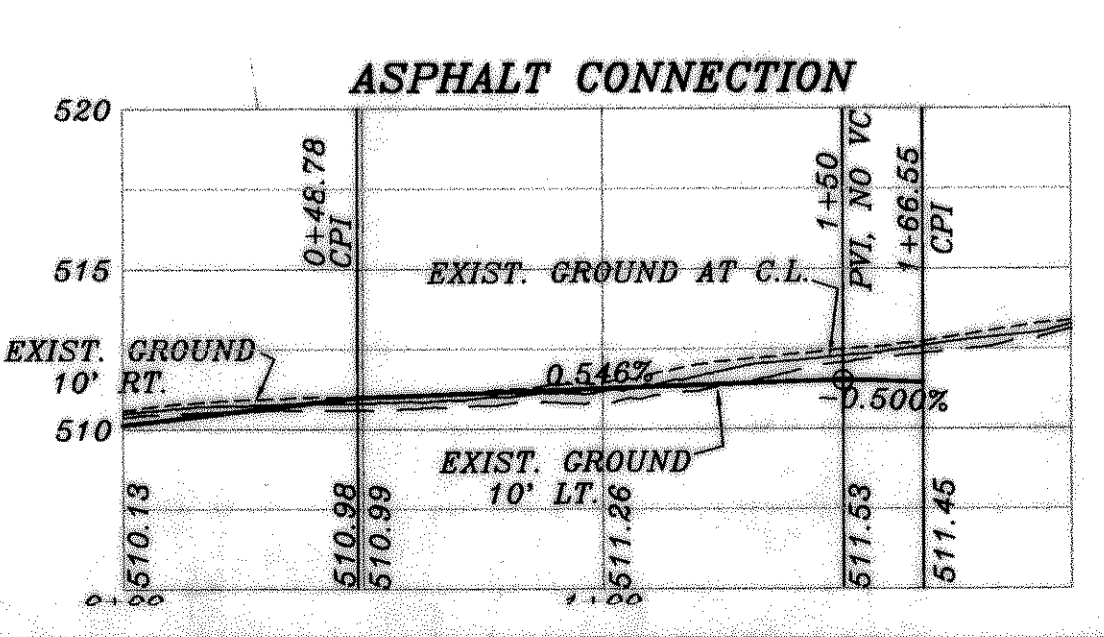
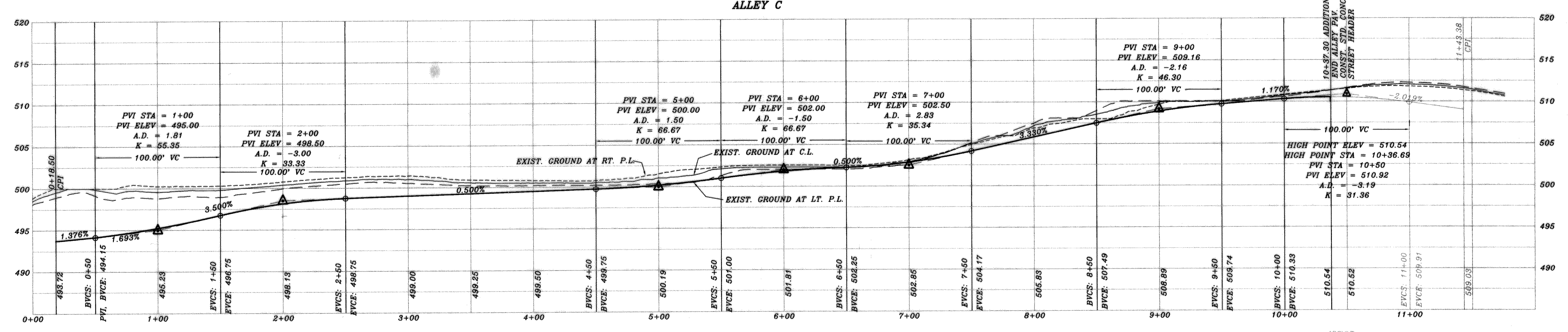
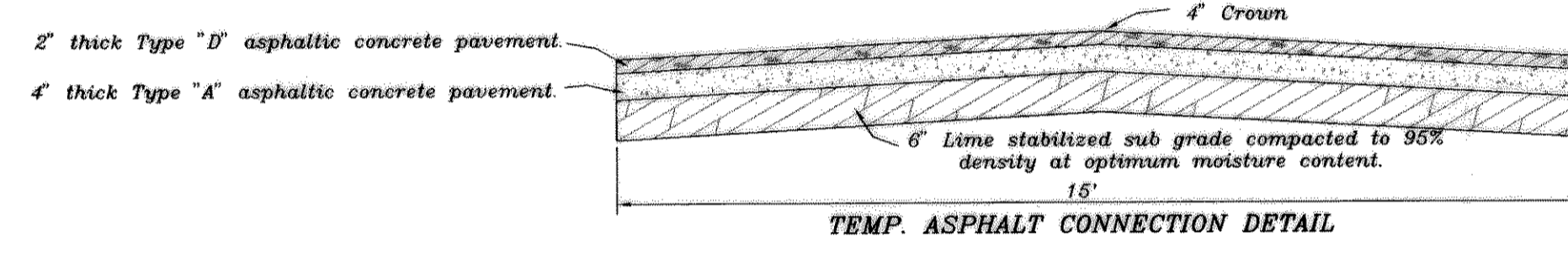
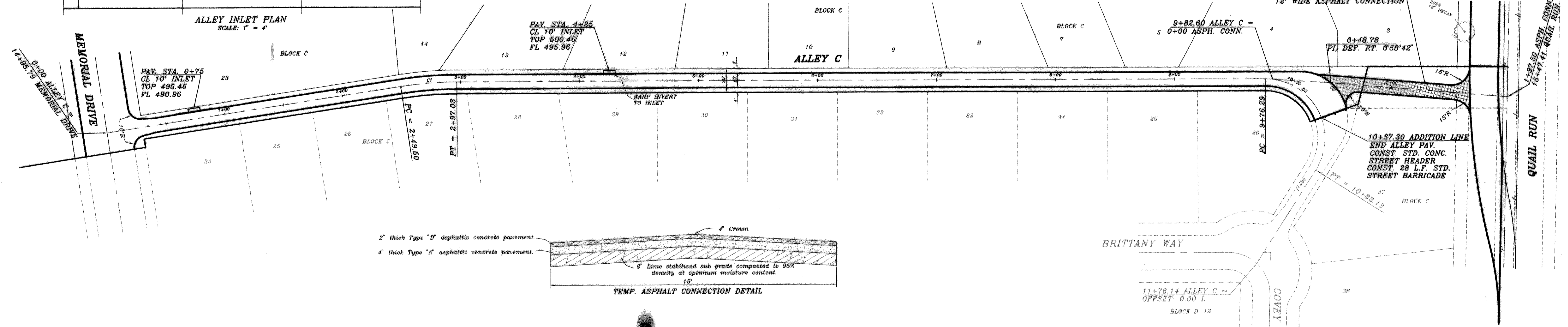


CURVE	RADIUS	LENGTH	TANGENT	CHORD	BEARING	DELTA
C1	311.88'	47.53'	23.81'	47.48'	S06°08'01" E	08°43'55"
C2	50.00'	61.01'	34.96'	57.30'	S33°11'24" W	69°54'56"
C3	40.00'	52.80'	31.04'	49.05'	S36°02'42" W	75°37'32"



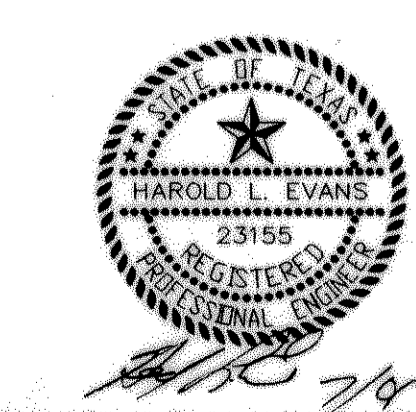
BENCH MARK  
SQUARE CUT IN CONCRETE AT BASE OF CONCRETE WALL AT S.W. CORNER OF SOUTH APPROACH TO BRIDGE OVER SQUABBLE CREEK ON HWY. 205  
ELEV.: 472.41

BENCH MARK  
600 NAIL IN 34' PECAN TREE (TREE NO. 2314)  
PAY. STA. 1+83, 138' RT., AUDOBON LANE  
ELEV.: 480.88

BENCH MARK  
600 NAIL IN 18' PECAN TREE (TREE NO. 2114)  
PAY. STA. 10+97 63.5' RT., AUDOBON LANE  
ELEV.: 501.54

Winkelmann & Associates, Inc. hereby states that this plan, to the best of our knowledge is "As Built". Modifications from the originally approved construction documents have been made as per information provided by the contractor, Winkelmann & Associates, Inc. We do not certify as to the correctness or quality of construction as no field inspection was performed.

*J. C. Winkelmann*  
WINKELMANN & ASSOCIATES, INC. DATE: 4-0-02



REV. PER 4th CITY REVIEW 7/12/01 REV. PER 3rd CITY REVIEW 6/11/01 REV. PER 2nd CITY REVIEW 5/5/01 REV. PER CITY REVIEW 2/24/00		<b>HAROLD L. EVANS</b> CONSULTING ENGINEER P.O. BOX 28365 2391 GUS THOMASSON ROAD, SUITE 102 DALLAS, TEXAS 75228 (214) 328-8133	<b>PROPOSED PAVING</b> <b>ALLEY C</b> <b>QUAIL RUN VALLEY NO.1</b> <b>CITY OF ROCKWALL</b>	SHEET NO. 8
REVISION DESCRIPTION 11/8/00				DATE SCALE DESIGN DRAWN 11/8/00 1" = 40' 1" = 6" H.L.E.