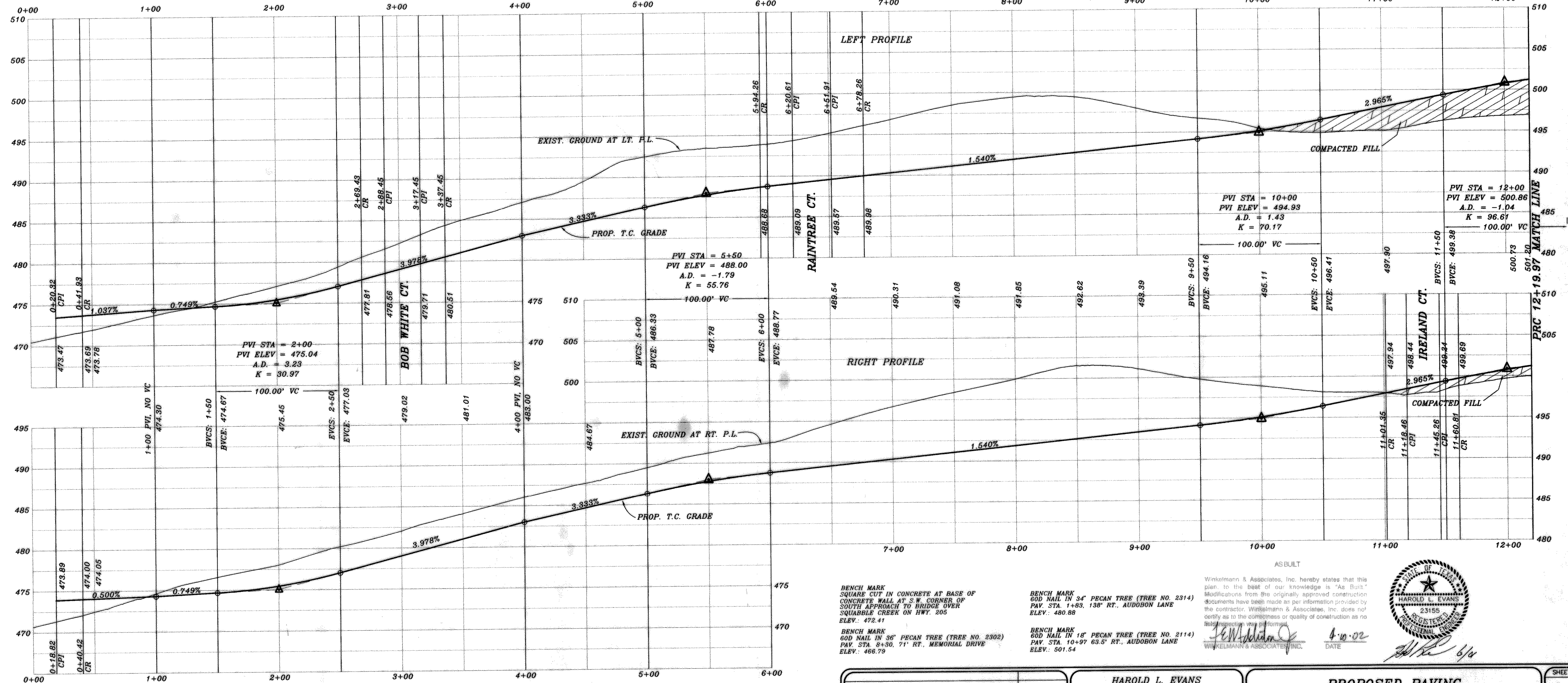
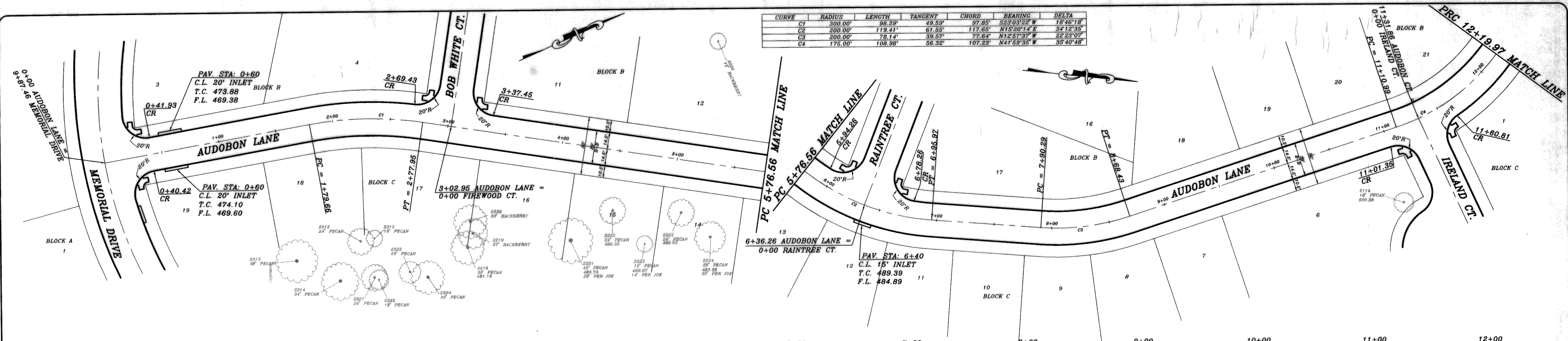


CURVE	RADIUS	LENGTH	TANGENT	CHORD	BEARING	DELTA
C1	300.00'	98.29'	49.59'	97.85'	S23°03'22" W	13°46'18"
C2	200.00'	119.41'	59.70'	117.65'	N12°20'14" E	34°12'35"
C3	200.00'	78.14'	39.07'	77.64'	N12°57'37" W	22°23'07"
C4	175.00'	108.98'	54.49'	107.23'	N41°59'35" W	35°40'48"



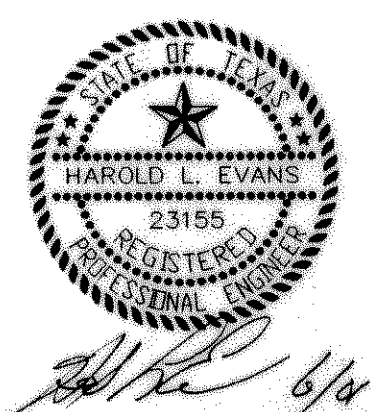
BENCH MARK
SQUARE CUT IN CONCRETE AT BASE OF
CONCRETE WALL AT S.W. CORNER OF
SOUTH APPROACH TO BRIDGE OVER
SQUABLE CREEK ON HWY. 205
ELEV.: 472.41

BENCH MARK
60D NAIL IN 34' PECAN TREE (TREE NO. 2314)
PAY. STA. 1+88, 138' RT., AUDOBON LANE
ELEV.: 480.88

BENCH MARK
60D NAIL IN 18' PECAN TREE (TREE NO. 2114)
PAY. STA. 8+30, 71' RT., MEMORIAL DRIVE
ELEV.: 486.79

Winkelmann & Associates, Inc. hereby states that this plan to the best of our knowledge is "As Built" modifications from the originally approved construction documents have been made as per information provided by the contractor. Winkelmann & Associates, Inc. does not certify as to the correctness or quality of construction as no field inspection was performed.

[Signature]
WINKELMANN & ASSOCIATES, INC.
DATE: 4-10-02



REVISION DESCRIPTION	DATE	SCALE	DESIGN	DRAWN
REV. PER 3rd CITY REVIEW	6/11/01	1" = 40'	H.L.E.	
REV. PER 2nd CITY REVIEW	5/5/01	1" = 6'		
REV. PER CITY REVIEW	2/24/01			

HAROLD L. EVANS
CONSULTING ENGINEER
P.O. BOX 23355
2331 GUS THOMASSON ROAD, SUITE 102
DALLAS, TEXAS 75228. (214) 328-8133

PROPOSED PAVING
AUDOBON LANE
QUAIL RUN VALLEY NO. 1
CITY OF ROCKWALL

SHEET NO.
5
21
JOB NO.
0020