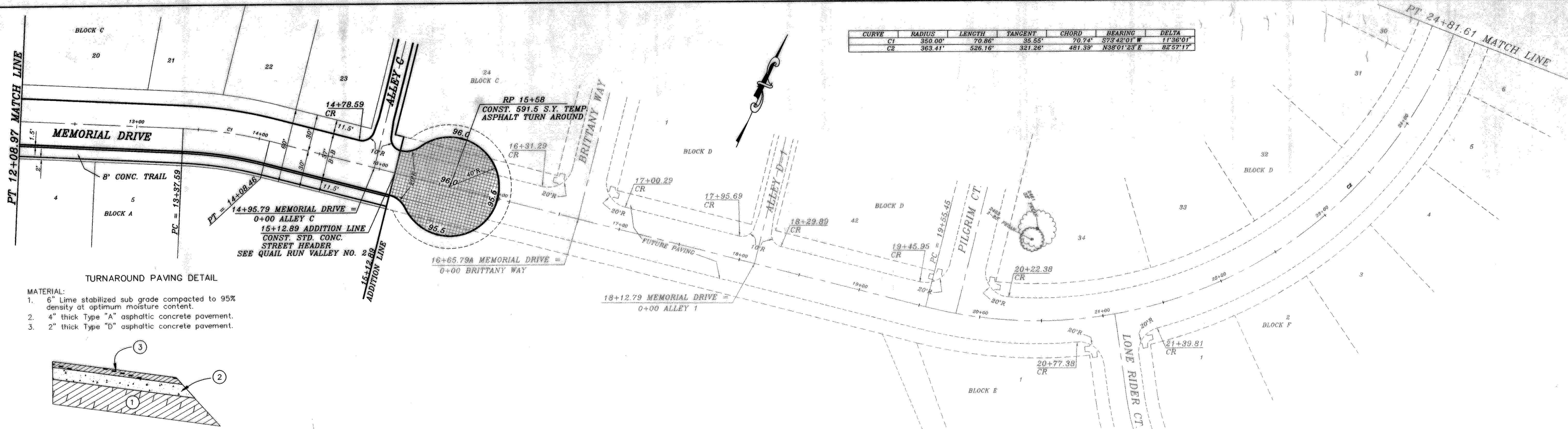
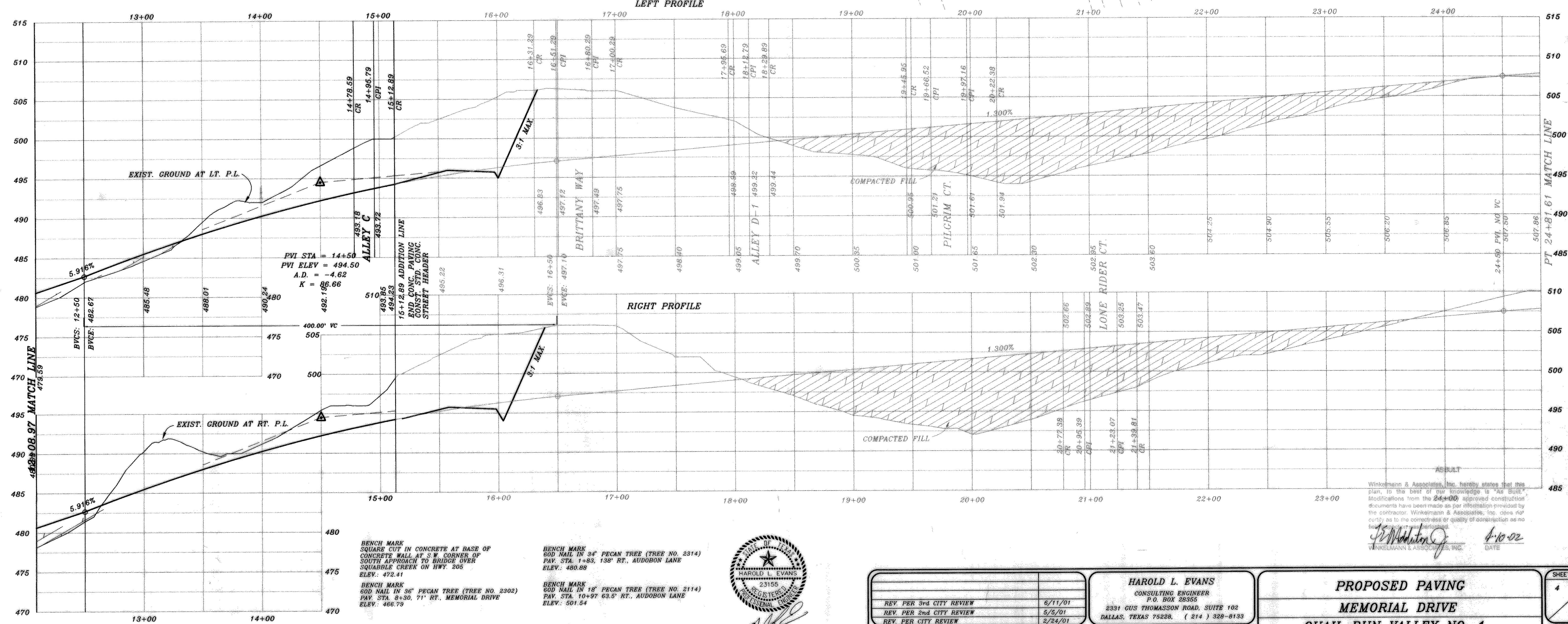
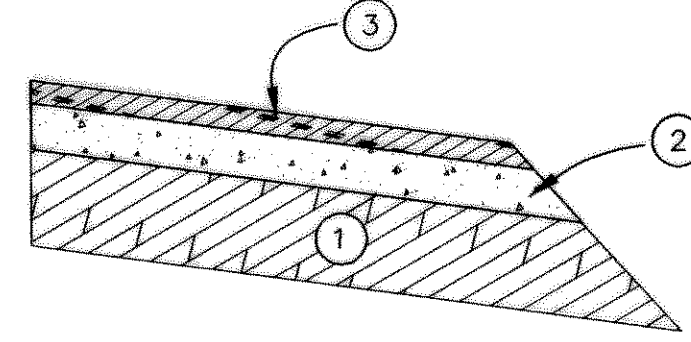


CURVE	RADIUS	LENGTH	TANGENT	CHORD	BEARING	DELTA
C1	350.00'	70.86'	35.55'	70.74'	S73°42'01" W	113°36'01"
C2	363.41'	526.16'	321.26'	481.39'	N38°01'23" E	82°57'17"



- MATERIAL:**
- 6" Lime stabilized sub grade compacted to 95% density at optimum moisture content.
 - 4" thick Type "A" asphaltic concrete pavement.
 - 2" thick Type "B" asphaltic concrete pavement.

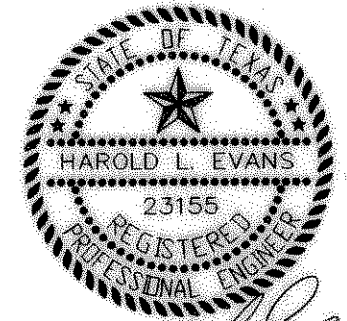


BENCH MARK
 SQUARE CUT IN CONCRETE AT BASE OF
 CONCRETE WALL AT S.W. CORNER OF
 SOUTH APPROACH TO BRIDGE OVER
 SQUABBLE CREEK ON HWY. 205
 ELEV.: 472.41

BENCH MARK
 300 NAIL IN 36" PECAN TREE (TREE NO. 2302)
 PAV. STA. 8+30.71' RT., MEMORIAL DRIVE
 ELEV.: 466.79

BENCH MARK
 300 NAIL IN 34" PECAN TREE (TREE NO. 2314)
 PAV. STA. 1+63.138' RT., AUDOBON LANE
 ELEV.: 480.88

BENCH MARK
 300 NAIL IN 18" PECAN TREE (TREE NO. 2114)
 PAV. STA. 10+97.635' RT., AUDOBON LANE
 ELEV.: 501.54



Winkelmann & Associates, Inc. hereby states that this plan, to the best of our knowledge is "As Built". Modifications from the 24+00 approved construction documents have been made as per information provided by the contractor. Winkelmann & Associates, Inc. does not certify as to the correctness or quality of construction as no field notes were provided.

Harold L. Evans
 WINKELMANN & ASSOCIATES, INC.
 DATE: 4/10/02

REVISION DESCRIPTION	DATE	SCALE	DESIGN	DRAWN
REV. PER 3rd CITY REVIEW	6/11/01			
REV. PER 2nd CITY REVIEW	5/5/01			
REV. PER CITY REVIEW	2/24/01			
	11/6/00	1" = 40' 1" = 6'	H.L.E.	

HAROLD L. EVANS
 CONSULTING ENGINEER
 2331 CUS THOMASSON ROAD, SUITE 102
 DALLAS, TEXAS 75228. (214) 328-8133

PROPOSED PAVING
MEMORIAL DRIVE
QUAIL RUN VALLEY NO. 1
CITY OF ROCKWALL

SHEET NO.	4
JOB NO.	0020