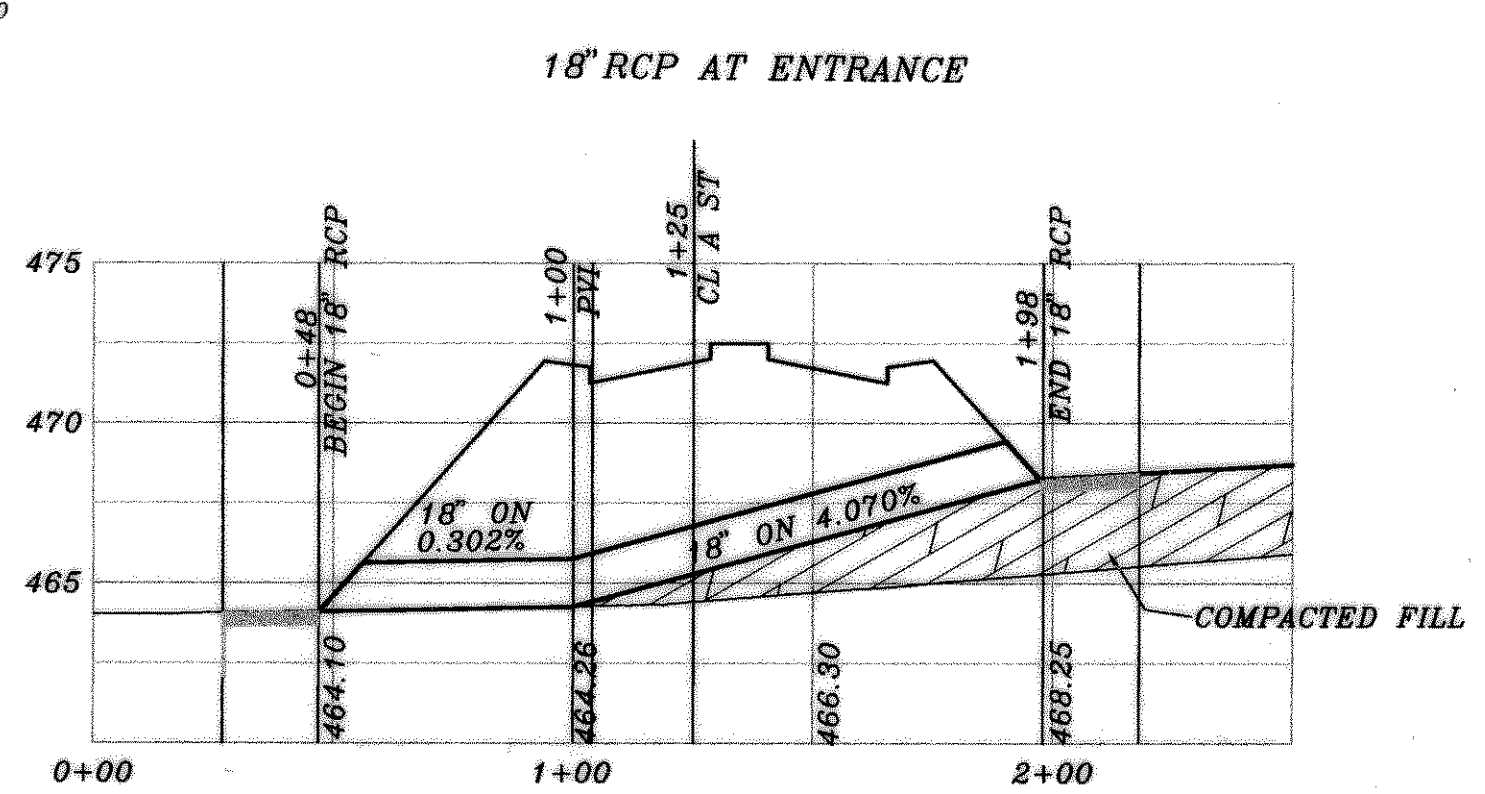
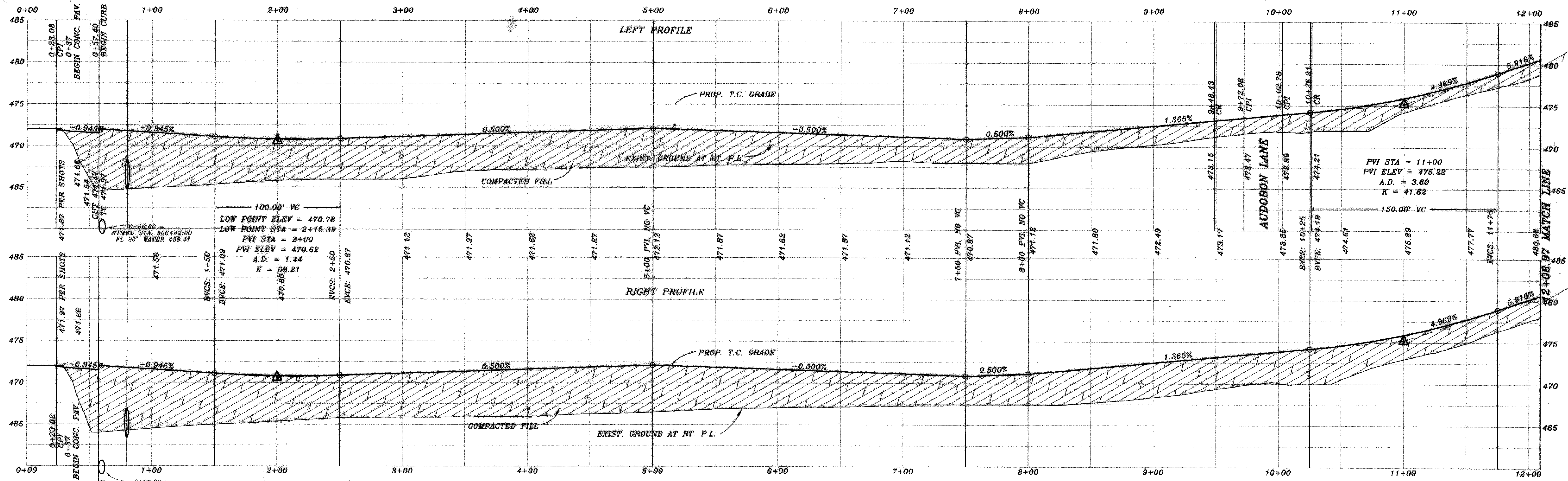


CURVE	RADIUS	LENGTH	TANGENT	CHORD	BEARING	DELTA
C1	350.00'	306.39'	163.79'	296.70'	N79°08'36" W	50°09'23"
C2	350.00'	354.52'	194.15'	339.55'	S83°04'57" E	58°02'06"
C3	150.50'	82.13'	42.11'	81.11'	N88°35'19" W	31°15'56"
C4	180.00'	37.88'	19.03'	37.79'	S79°44'18" E	13°33'51"
C5	370.00'	209.58'	107.69'	206.79'	N70°17'33" W	32°27'17"
C6	409.48'	126.51'	63.76'	126.01'	S84°37'46" W	17°42'06"
C7	325.00'	184.09'	94.59'	181.64'	N70°17'33" W	32°27'17"
C8	427.53'	202.52'	103.20'	200.63'	S67°38'08" E	27°08'27"



BENCH MARK  
SQUARE CUT IN CONCRETE AT BASE OF  
CONCRETE WALL AT S W CORNER OF  
SOUTH APPROACH TO BRIDGE OVER  
SQUABBLE CREEK ON HWY. 205  
ELEV.: 472.41

BENCH MARK  
60D NAIL IN 36" PECAN TREE (TREE NO. 2314)  
PAV. STA. 1+83, 138' RT., AUDOBON LANE  
ELEV.: 480.88

BENCH MARK  
60D NAIL IN 18" PECAN TREE (TREE NO. 2114)  
PAV. STA. 8+30, 71' RT., MEMORIAL DRIVE  
ELEV.: 466.79

BENCH MARK  
60D NAIL IN 36" PECAN TREE (TREE NO. 2314)  
PAV. STA. 10+97, 63.5' RT., AUDOBON LANE  
ELEV.: 501.54

ASSULT

Winkelmann & Associates, Inc. hereby states that this plan, to the best of our knowledge and belief, conforms to the requirements of the City of Rockwall, Texas, and that we are not aware of any other persons who have been or may be engaged in the preparation of this plan. We warrant that the information furnished to us by the client is true and correct, and that we have performed a reasonable investigation of the facts and conditions shown on this plan. We warrant that the information furnished to us by the client is true and correct, and that we have performed a reasonable investigation of the facts and conditions shown on this plan. We warrant that the information furnished to us by the client is true and correct, and that we have performed a reasonable investigation of the facts and conditions shown on this plan.

*[Signature]*  
WINKELMANN & ASSOCIATES, INC.  
DATE: 4/02/01



HAROLD L. EVANS CONSULTING ENGINEER P.O. BOX 28355 2331 GUS THOMASSON ROAD, SUITE 102 DALLAS, TEXAS 75228, (214) 328-8133		<b>PROPOSED PAVING</b> <b>MEMORIAL DRIVE</b> <b>QUAIL RUN VALLEY NO. 1</b> <b>CITY OF ROCKWALL</b>		SHEET NO. 3 JOB NO. 0020	
REV. PER 2nd CITY REVIEW 5/5/01	REV. PER CITY REVIEW 2/24/01	DATE 11/6/00	SCALE 1" = 40' 1" = 8'	DESIGN H.L.E.	DRAWN