

The developer shall arrange for the installation of all pavement striping, regulatory, warning and guide signs, including posts, as shown on the plans or as directed by the City. Street name signs shall be installed at each intersection. Examples of regulatory, warning, information and guide signs are as follows:

-Regulatory signs shall include, but are not limited to, STOP, ALL-WAY, YIELD, KEEP RIGHT and speed limit signs.

-Warning signs shall include, but are not limited to, DEAD END, NO OUTLET, DIVIDED ROAD, DIP, and PAVEMENT ENDS.

-Guide signs shall include, but are not limited to, street name signs, DETOUR, direction arrow and advance arrow.

Regulatory signs should be used only where justified by engineering judgment or study. All signage plans shall be reviewed and approved by the City of Rockwall Engineering Department and be designed in accordance with the principles described in the current TMUTCD.

-A detailed street and regulatory signage plan is to be submitted to the City of Rockwall Engineering Department. All signs shall be shown in the engineering plans for review and approval. The signage plan shall be shown on a separate signage & pavement marking layout sheet or as a part of the plan & profile sheet. The plan shall identify the specific sign designation, size and location for each sign. Sign standards shall also be included in the engineering plans.

-All signage installed shall comply with the current "Texas Manual on Uniform Traffic Control Devices" and the "Standard Highway Sign Designs for Texas." The sign layout drawings shall show the color and dimensions of all sign face legend components including background color, legend color, borders, symbols, letter size and style.

-The developer shall be responsible for furnishing and installing all regulatory signage, warning signage and street name signage along with all necessary sign mounts in accordance with the approved engineering plans. A sample production sign shall be submitted to the Traffic Signs & Pavement Markings Supervisor for review and approval. The sample shall be directed to the City of Rockwall Service Center located at 1600 Airport Road, Rockwall Texas 75087. The sample sign must be submitted at least 10 days prior to the scheduled installation date.

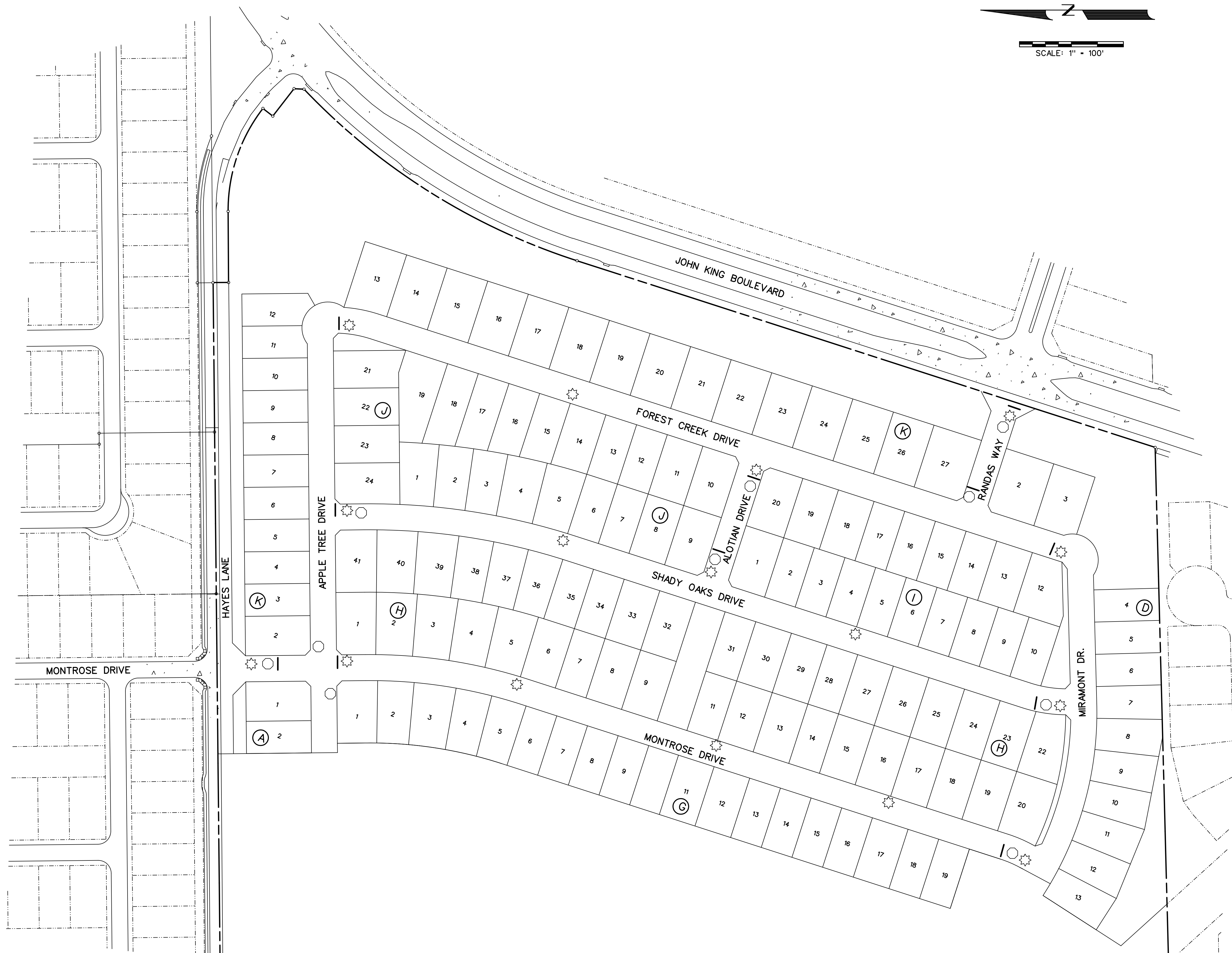
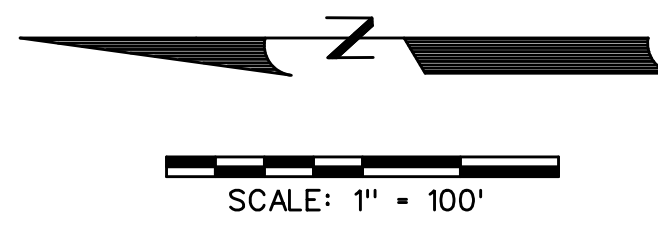
-For a street with a cul-de-sac end, a standard W 14-2a shall be mounted over the street name blade, if the cul-de-sac is not clearly visible from the adjoining roadway, or is located in excess of 400 linear feet from the adjoining roadway.

-Sign posts shall be 2 3/8" O.D. galvanized steel tube sign post with a galvanized finish.

-Sign clamps and brackets shall be high strength aluminum.

-Any decorative sign poles and fixtures installed shall be maintained by the HOA.

All developments shall be provided with streetlights. In general, lights should be located at street intersections and at intervals no greater than four hundred (400) feet apart. Streetlights should be the equivalent of 175-watt mercury vapor fixtures on minor residential streets. All collector and arterial, or commercial streets shall have sodium vapor fixtures with a minimum wattage of 250 or 400 watts as directed by the City. In some instances, the City may require greater wattage.



- LEGEND**
- ☼ - STREET LIGHT
 - - STOP SIGN
 - - STREET NAME BLADE

CORWIN ENGINEERING, INC.
 200 W. BELMONT, SUITE E
 ALLEN, TEXAS 75013 (972)396-1200
 TBPE FIRM #5951

**DEVELOPMENT PLANS FOR
 QUAIL HOLLOW
 PHASE I
 ROCKWALL, TEXAS**

SIGN AND LIGHT PLAN

DRAWN BY	DESIGNED BY	CHECKED BY	SHEET NO.
JOB NUMBER	DATE	SCALE:	40
22036	FEBRUARY 2023	1"=100'	

**RECORD DRAWINGS
 JANUARY 2024**
 INFORMATION PROVIDED
 BY CONTRACTORS
 (NOT FIELD VERIFIED)

