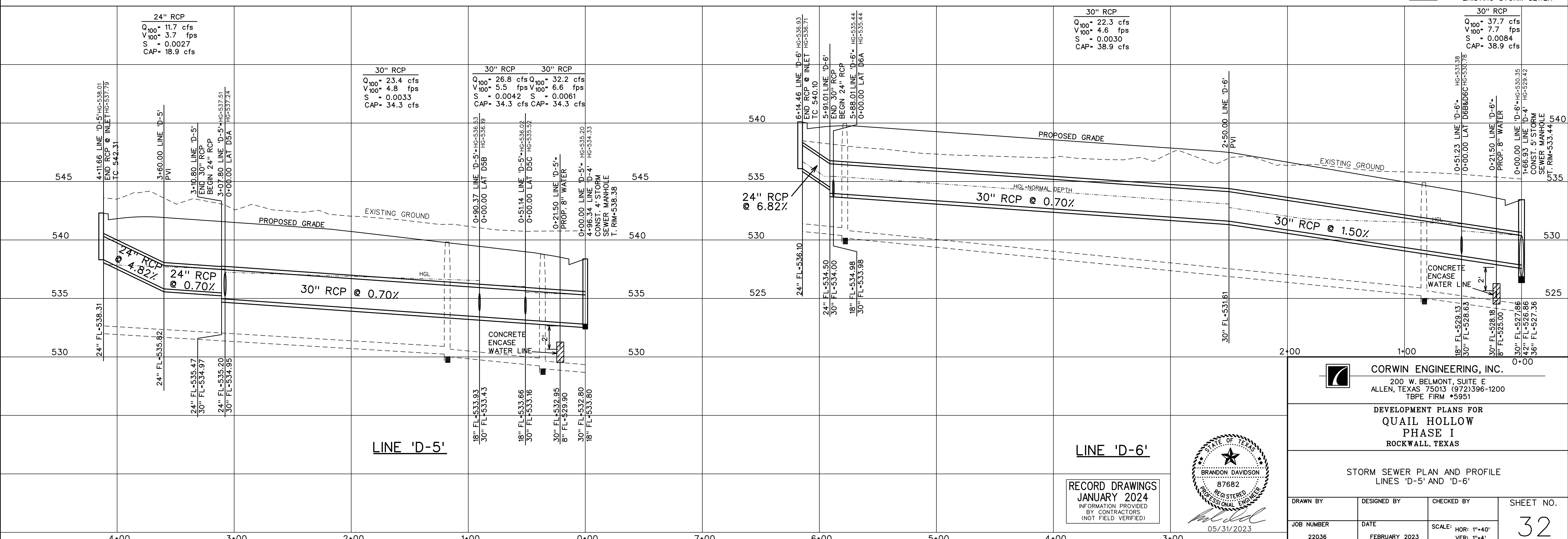


LINE 'D-5'

LINE 'D-6'

STORM SEWER CURVE DATA				
CURVE NO.	①	②	③	④
Δ	30° 00' 00"	19° 23' 29"	30° 00' 00"	10° 21' 19"
R	65.00'	250.00'	65.00'	250.00'
T	17.42'	42.71'	17.42'	22.65'
L	34.03'	84.61'	34.03'	45.18'

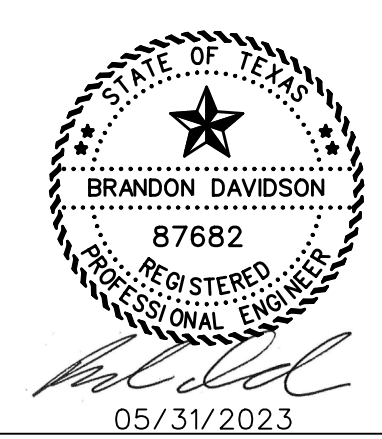
- LEGEND
- Ⓚ - BLOCK LABEL
  - Ⓜ - INLET NUMBER
  - ① - CURVE NUMBER
  - - SANITARY SEWER
  - - WATER
  - +— - PROPOSED STORM SEWER
  - /—/— - EXISTING STORM SEWER



LINE 'D-5'

LINE 'D-6'

RECORD DRAWINGS  
 JANUARY 2024  
 INFORMATION PROVIDED  
 BY CONTRACTORS  
 (NOT FIELD VERIFIED)



**CORWIN ENGINEERING, INC.**  
 200 W. BELMONT, SUITE E  
 ALLEN, TEXAS 75013 (972)396-1200  
 TBPE FIRM #5951

DEVELOPMENT PLANS FOR  
**QUAIL HOLLOW**  
 PHASE I  
 ROCKWALL, TEXAS

STORM SEWER PLAN AND PROFILE  
 LINES 'D-5' AND 'D-6'

DRAWN BY	DESIGNED BY	CHECKED BY	SHEET NO.
22036	FEBRUARY 2023	SCALE: HOR: 1"=40' VER: 1"=4'	32