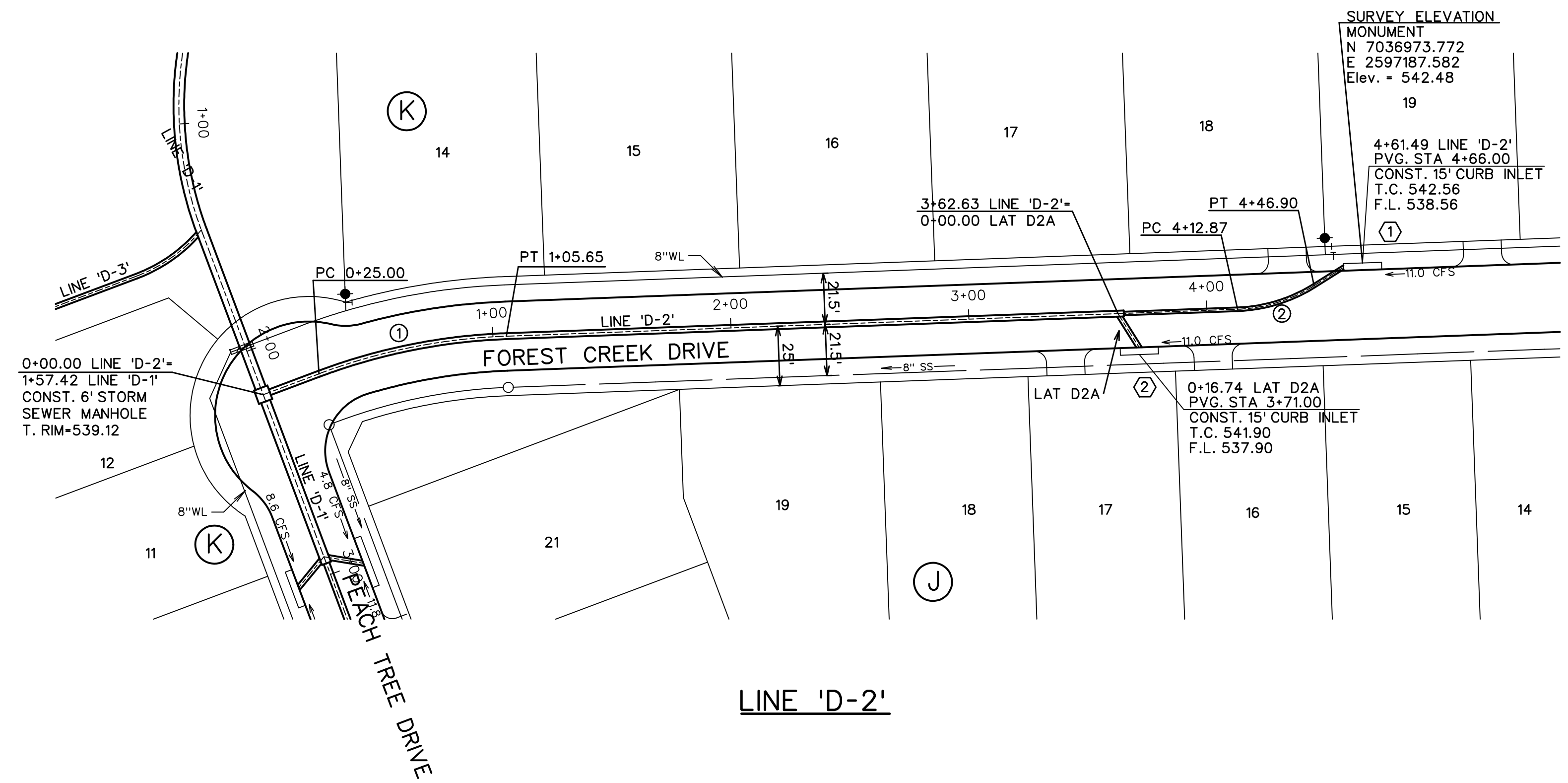
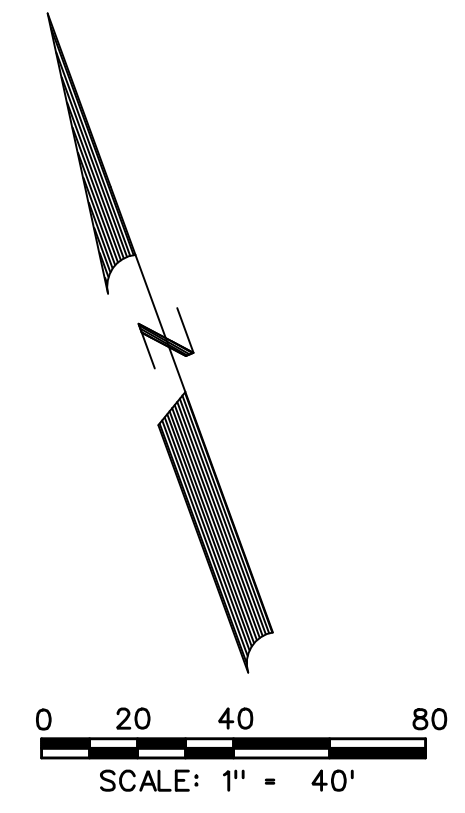
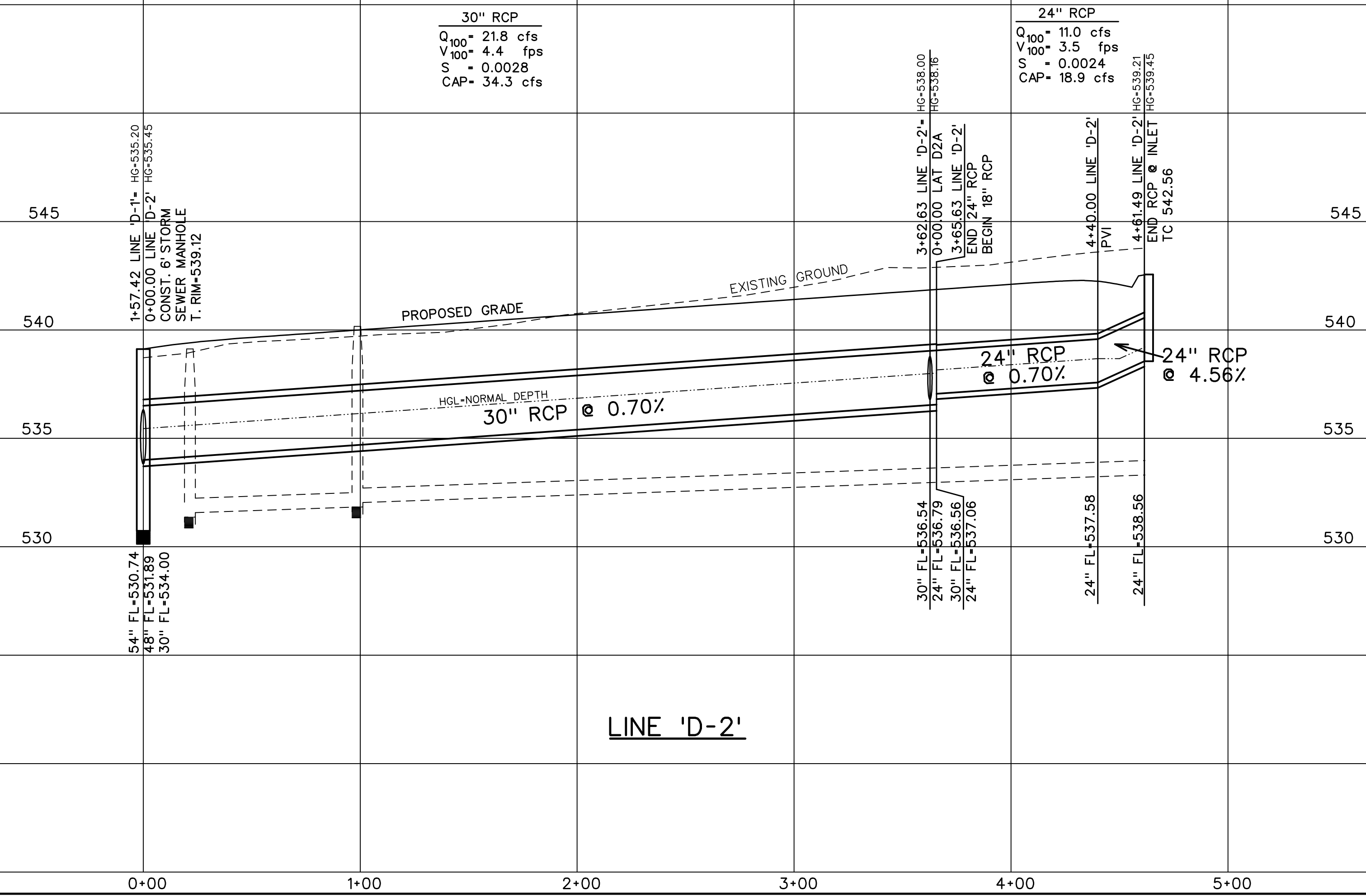


STORM SEWER CURVE DATA		
CURVE NO.	①	②
Δ	18° 29'00"	30° 00'00"
R	250.00'	65.00'
T	40.68'	17.42'
L	80.65'	34.03'



LINE 'D-2'

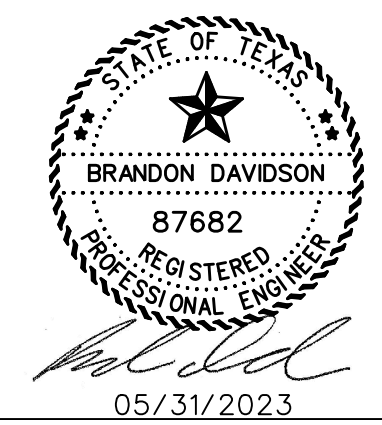


LINE 'D-2'

30" RCP  
 $Q_{100} = 21.8$  cfs  
 $V_{100} = 4.4$  fps  
 $S = 0.0028$   
 $CAP = 34.3$  cfs

24" RCP  
 $Q_{100} = 11.0$  cfs  
 $V_{100} = 3.5$  fps  
 $S = 0.0024$   
 $CAP = 18.9$  cfs

RECORD DRAWINGS  
 JANUARY 2024  
 INFORMATION PROVIDED  
 BY CONTRACTORS  
 (NOT FIELD VERIFIED)



**CORWIN ENGINEERING, INC.**  
 200 W. BELMONT, SUITE E  
 ALLEN, TEXAS 75013 (972)396-1200  
 TBPE FIRM #5951

DEVELOPMENT PLANS FOR  
**QUAIL HOLLOW**  
 PHASE I  
 ROCKWALL, TEXAS

STORM SEWER PLAN AND PROFILE  
 LINE 'D-2'

DRAWN BY	DESIGNED BY	CHECKED BY	SHEET NO.
JOB NUMBER	DATE	SCALE: HOR: 1"=40' VER: 1"=4'	30
22036	FEBRUARY 2023		