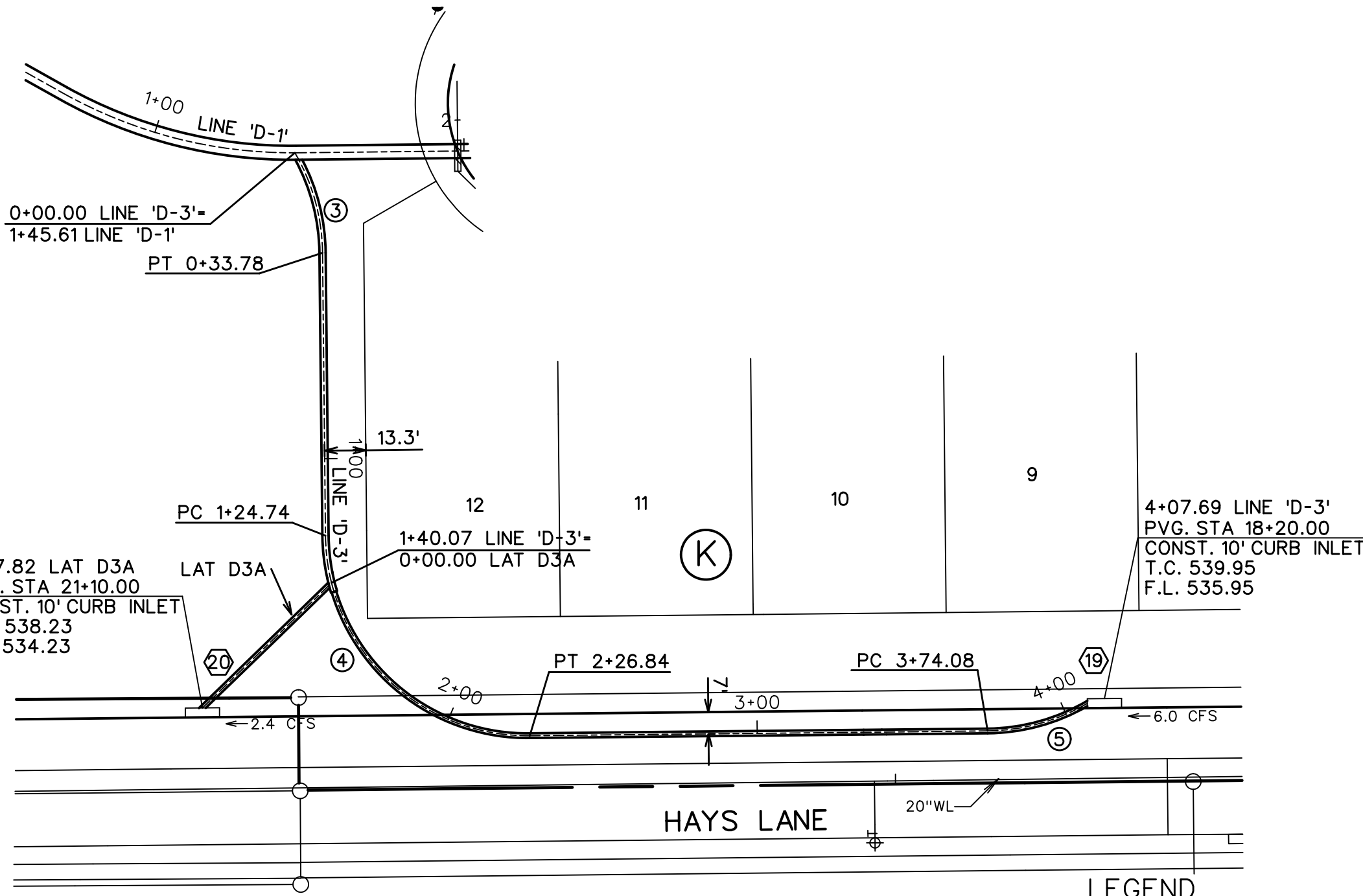
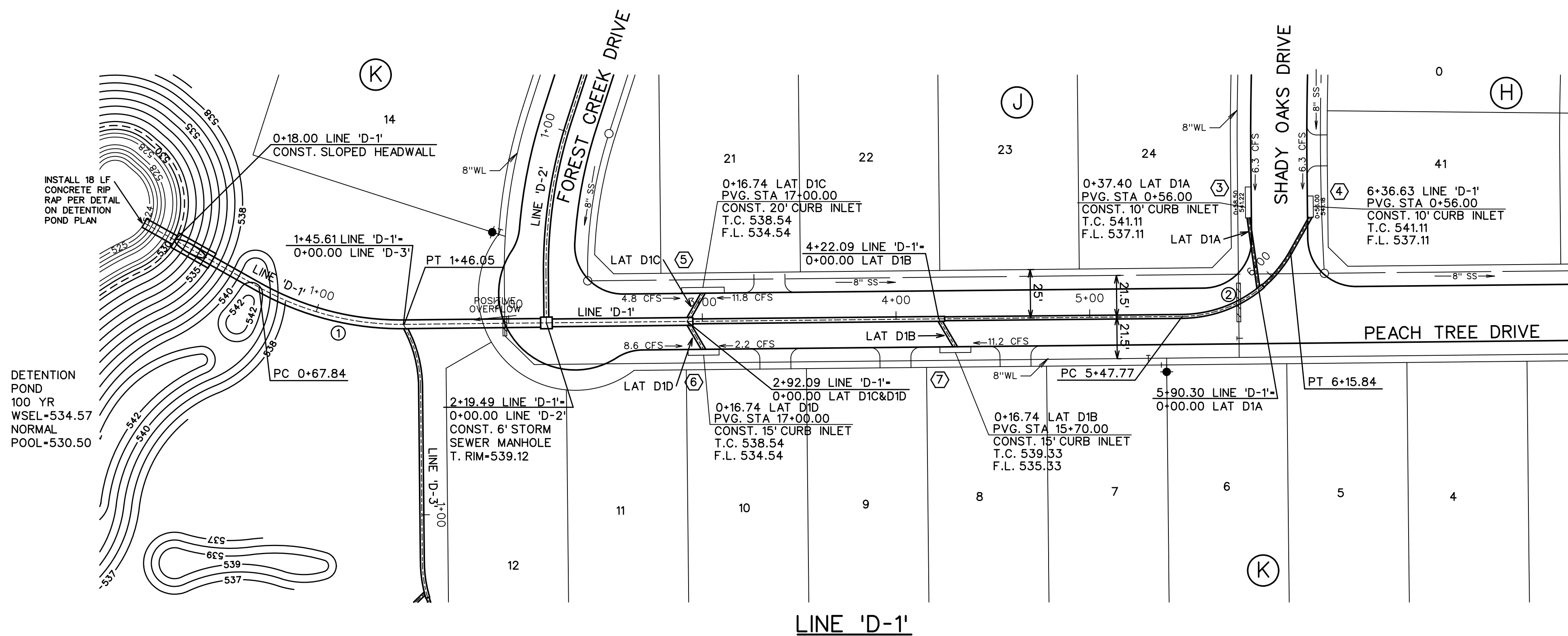
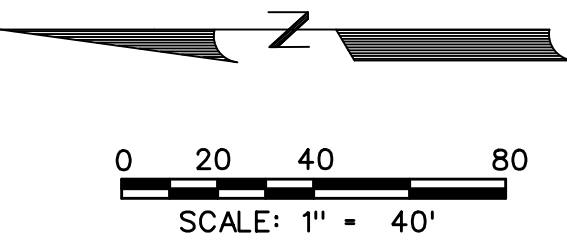
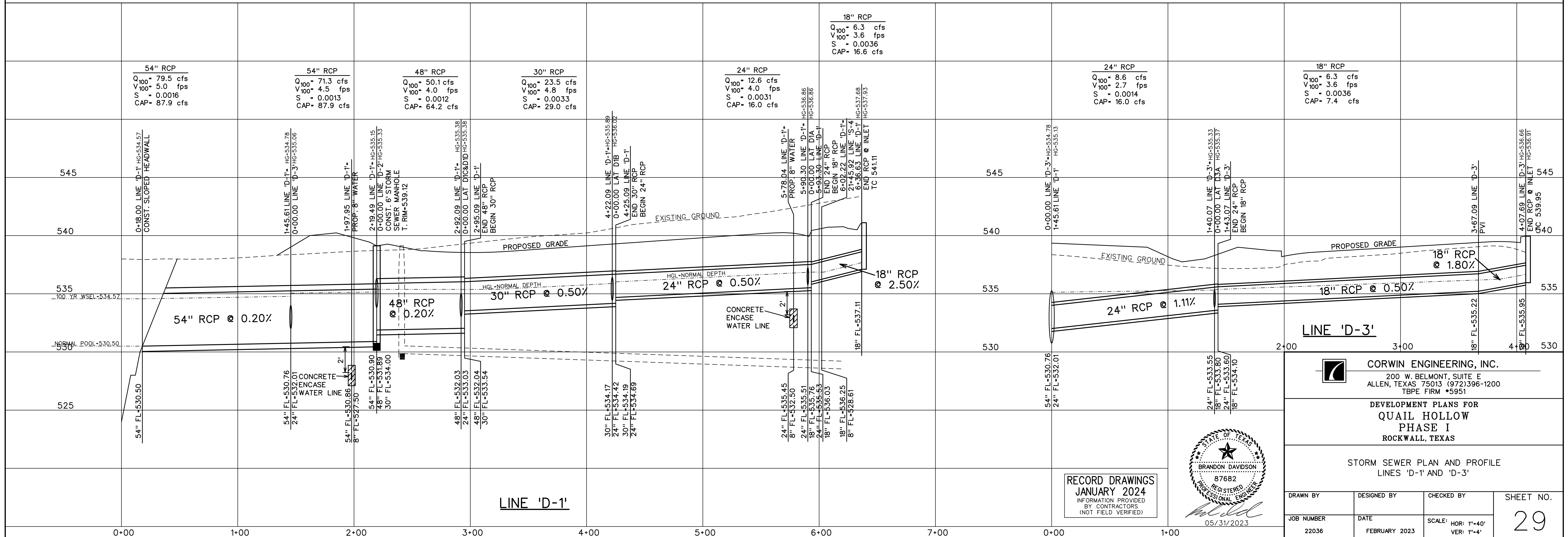


STORM SEWER CURVE DATA					
CURVE NO.	①	②	③	④	⑤
Δ	29° 52'19"	60° 00'00"	29° 46'43"	90° 00'20"	29° 37'50"
R	150.00'	65.00'	65.00'	65.00'	65.00'
T	40.01'	37.53'	17.28'	65.01'	17.19'
L	78.20'	68.07'	33.78'	102.11'	33.62'



- LEGEND**
- ⓑ - BLOCK LABEL
 - Ⓜ - INLET NUMBER
 - Ⓢ - CURVE NUMBER
 - - SANITARY SEWER
 - - WATER
 - ==== - PROPOSED STORM SEWER
 - ==== - EXISTING STORM SEWER



18" RCP
 Q₁₀₀ = 6.3 cfs
 V₁₀₀ = 3.6 fps
 S = 0.0036
 CAP = 16.6 cfs

54" RCP
 Q₁₀₀ = 79.5 cfs
 V₁₀₀ = 5.0 fps
 S = 0.0016
 CAP = 87.9 cfs

54" RCP
 Q₁₀₀ = 71.3 cfs
 V₁₀₀ = 4.5 fps
 S = 0.0013
 CAP = 87.9 cfs

48" RCP
 Q₁₀₀ = 50.1 cfs
 V₁₀₀ = 4.0 fps
 S = 0.0012
 CAP = 64.2 cfs

30" RCP
 Q₁₀₀ = 23.5 cfs
 V₁₀₀ = 4.8 fps
 S = 0.0033
 CAP = 29.0 cfs

24" RCP
 Q₁₀₀ = 12.6 cfs
 V₁₀₀ = 4.0 fps
 S = 0.0031
 CAP = 16.0 cfs

24" RCP
 Q₁₀₀ = 8.6 cfs
 V₁₀₀ = 2.7 fps
 S = 0.0014
 CAP = 16.0 cfs

18" RCP
 Q₁₀₀ = 6.3 cfs
 V₁₀₀ = 3.6 fps
 S = 0.0036
 CAP = 7.4 cfs

RECORD DRAWINGS
 JANUARY 2024
 INFORMATION PROVIDED
 BY CONTRACTORS
 (NOT FIELD VERIFIED)



CORWIN ENGINEERING, INC.
 200 W. BELMONT, SUITE E
 ALLEN, TEXAS 75013 (972)396-1200
 TBPE FIRM #5951

DEVELOPMENT PLANS FOR
QUAIL HOLLOW
 PHASE I
 ROCKWALL, TEXAS

STORM SEWER PLAN AND PROFILE
 LINES 'D-1' AND 'D-3'

DRAWN BY	DESIGNED BY	CHECKED BY	SHEET NO.
JOB NUMBER	DATE	SCALE: HOR: 1"=40' VER: 1"=4'	29
22036	FEBRUARY 2023		