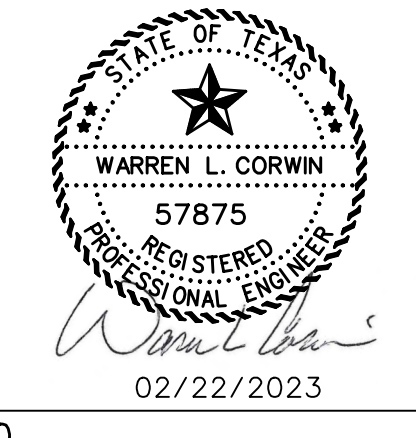


CORWIN ENGINEERING, INC.
 200 W. BELMONT, SUITE E
 ALLEN, TEXAS 75013 (972)396-1200
 TBPE FIRM #5951

DEVELOPMENT PLANS FOR
QUAIL HOLLOW
 PHASE I
 ROCKWALL, TEXAS

SANITARY SEWER PROFILES



RECORD DRAWINGS
 JANUARY 2024
 INFORMATION PROVIDED
 BY CONTRACTORS
 (NOT FIELD VERIFIED)

DRAWN BY	DESIGNED BY	CHECKED BY	SHEET NO.
JOB NUMBER	DATE	SCALE: HOR: 1"=40' VER: 1"=4'	21
22036	FEBRUARY 2023		