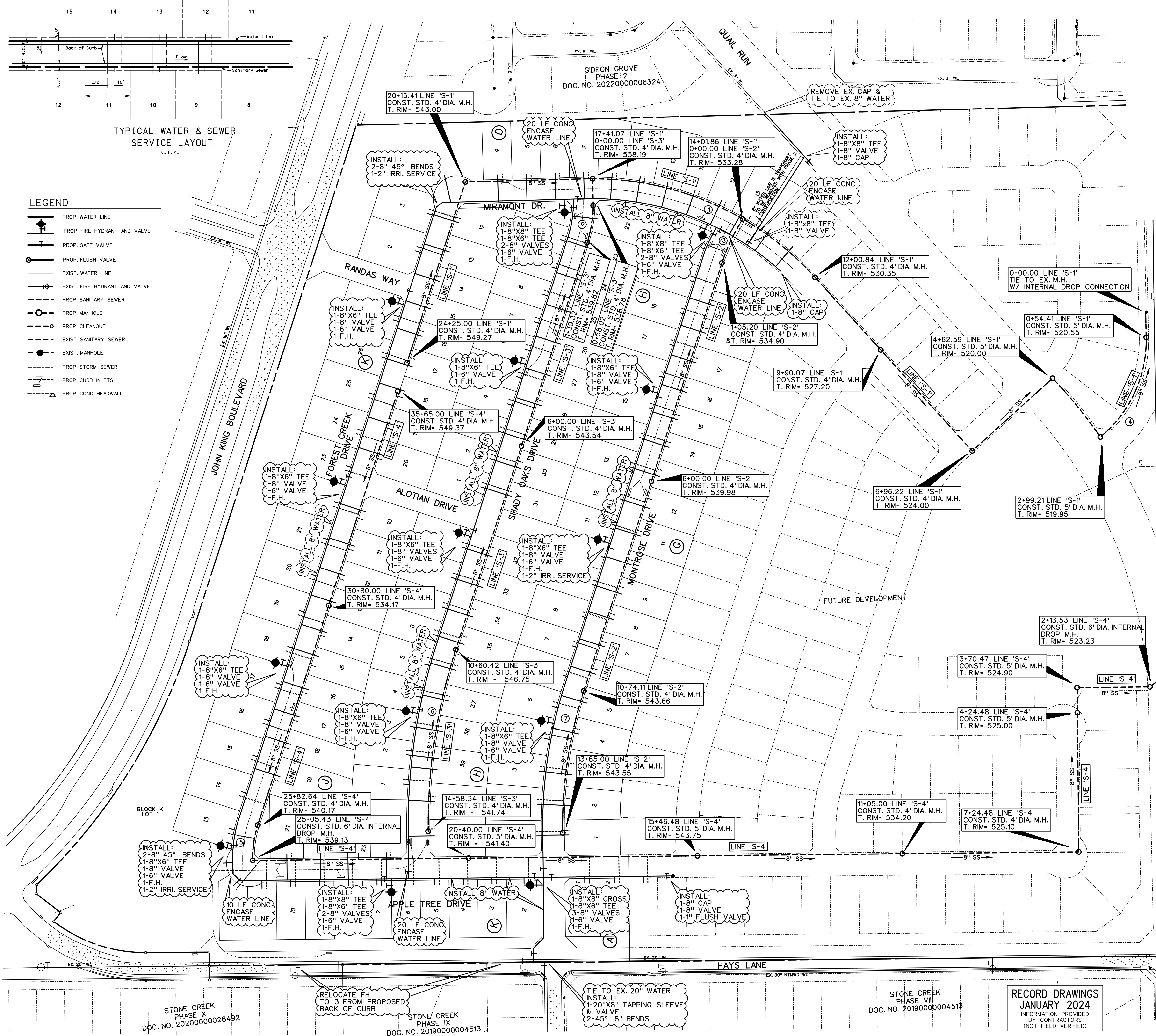
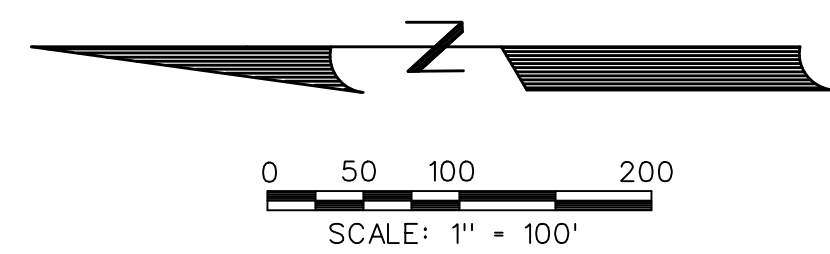


- LEGEND**
- PROP. WATER LINE
 - PROP. FIRE HYDRANT AND VALVE
 - PROP. GATE VALVE
 - PROP. FLUSH VALVE
 - PROP. SANITARY SEWER
 - PROP. MANHOLE
 - PROP. CLEANOUT
 - EXIST. SANITARY SEWER
 - EXIST. MANHOLE
 - PROP. STORM SEWER
 - PROP. CURB INLETS
 - PROP. CONC. HEADWALL



LOTS 1-2 BLK A, LOTS 23-24 BLK J & LOTS 2-8 BLK K SHALL HAVE DEEP SERVICE CONNECTION



CURVE TABLE

CURVE NO.	DELTA	RADIUS	LENGTH	TANGENT
1.	49° 20' 48"	646.50'	556.80'	296.99'
2.	19° 11' 16"	271.50'	81.31'	45.37'
3.	15° 04' 09"	400.00'	105.20'	52.91'
4.	51° 56' 53"	270.00'	244.80'	131.54'
5.	19° 21' 40"	228.50'	77.21'	38.98'
6.	18° 29' 00"	1233.50'	397.92'	200.70'
7.	18° 52' 46"	943.50'	310.89'	156.87'

- NOTE:**
- ALL WATER LINES TO BE CLASS 200 PIPE DR-14 C-900.
 - ALL SANITARY SEWER PIPE TO BE SDR 35 FOR 5'-10" DEEP AND SDR 26 FOR 10" AND GREATER.
 - INSTALL BLUE "EMS" DISK ON WATER LINE AT EVERY 250' AND CHANGE IN DIRECTION, VALVE, AND SERVICE.
 - INSTALL GREEN "EMS" DISK ON SANITARY SEWER LINE EVERY 250' AND AT EVERY CHANGE IN DIRECTION, MANHOLE, CLEANOUT, AND SERVICE.
 - ALL MANHOLES TO BE RAVEN EPOXY LINED AND SEALED OR APPROVED EQUAL. TO BE SPARK AND PRESSURE TESTED.
 - MANHOLES THAT ARE BEING TIED INTO WILL BE RAVEN LINED OR APPROVED EQUAL.
 - METER ON BLOCK K, LOT 1, SHALL SERVE IRRIGATION SYSTEM AND DETENTION POND

SERVICE SCHEDULE

TYPE	SIZE	NO.
SANITARY	4"	141
WATER	1"	143
IRRIGATION	1"	3

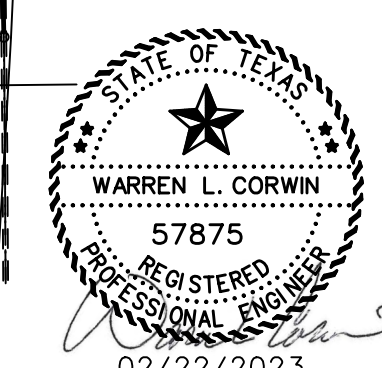
- NOTE:**
- PROVIDE POSITIVE DRAINAGE ABOVE ALL OFFSITE PROPOSED SANITARY SEWER MANHOLES. (TYP)

STONE CREEK PHASE X DOC. NO. 2020000028492

STONE CREEK PHASE IX DOC. NO. 2019000004513

STONE CREEK PHASE VIII DOC. NO. 2019000004513

RECORD DRAWINGS JANUARY 2024 INFORMATION PROVIDED BY CONTRACTORS (NOT FIELD VERIFIED)



CORWIN ENGINEERING, INC.
 200 W. BELMONT, SUITE E
 ALLEN, TEXAS 75013 (972)396-1200
 TBPE FIRM #5951

DEVELOPMENT PLANS FOR QUAIL HOLLOW PHASE I
 ROCKWALL, TEXAS

WATER AND SANITARY SEWER PLAN

DRAWN BY	DESIGNED BY	CHECKED BY	SHEET NO.
22036	FEBRUARY 2023	SCALE: 1"=100'	19