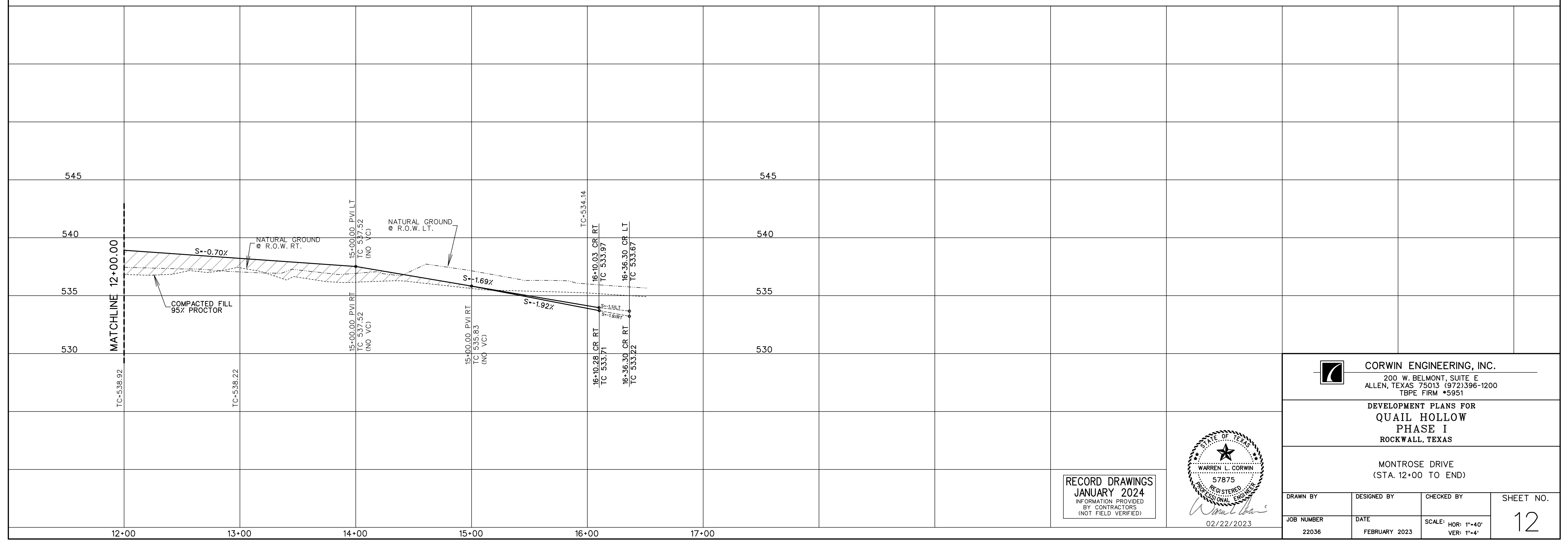
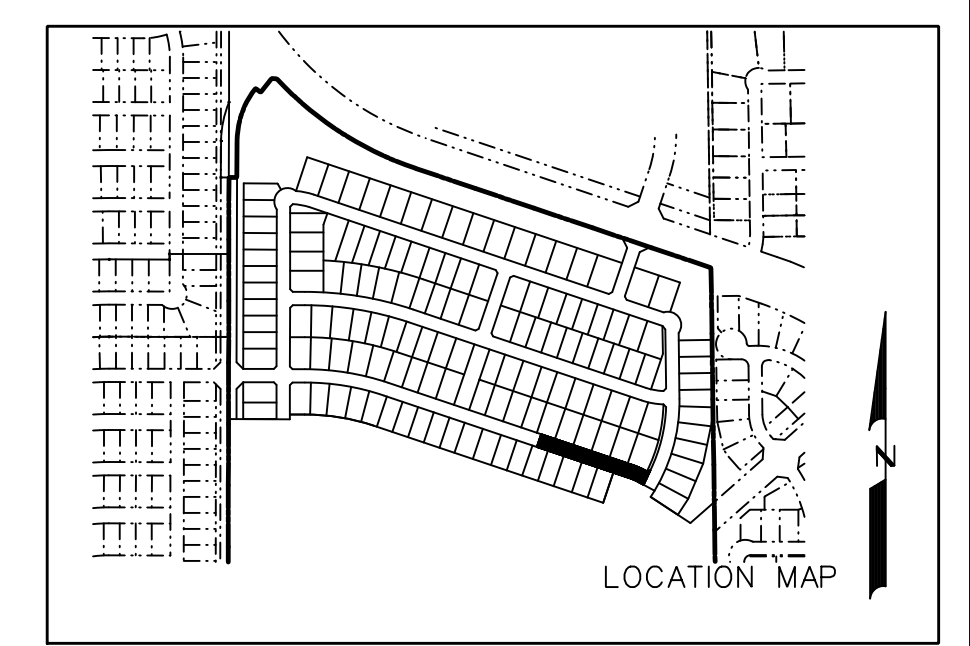


PAVING NOTES:

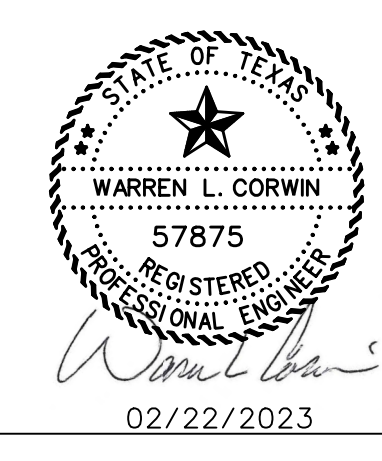
- Street pavement cement content to be no less than 6 sacks per cubic yard for machine placed and not less than 6.5 sacks per cubic for hand placed.
- Sidewalk cement content of not less than 5.5 per cubic yard.
- No sand allowed under pavement or sidewalks.
- Minimum lime content shall be 6% of dry weight of material (at least 27 lbs./SY) compacted to 95% standard density.

NOTE:

- ALL DIMENSIONS ARE TO BACK OF CURB UNLESS OTHERWISE NOTED.
- - - - - SIDEWALK BY HOMEBUILDER
  - SIDEWALK BY DEVELOPER
- ALL ADA RAMPS TO BE BUILT BY DEVELOPER.



RECORD DRAWINGS  
JANUARY 2024  
INFORMATION PROVIDED  
BY CONTRACTORS  
(NOT FIELD VERIFIED)



**CORWIN ENGINEERING, INC.**  
200 W. BELMONT, SUITE E  
ALLEN, TEXAS 75013 (972)396-1200  
TBPB FIRM #5951

DEVELOPMENT PLANS FOR  
**QUAIL HOLLOW**  
PHASE I  
ROCKWALL, TEXAS

MONTROSE DRIVE  
(STA. 12+00 TO END)

DRAWN BY	DESIGNED BY	CHECKED BY	SHEET NO.
JOB NUMBER	DATE	SCALE: HOR: 1"=40' VER: 1"=4'	12
22036	FEBRUARY 2023		