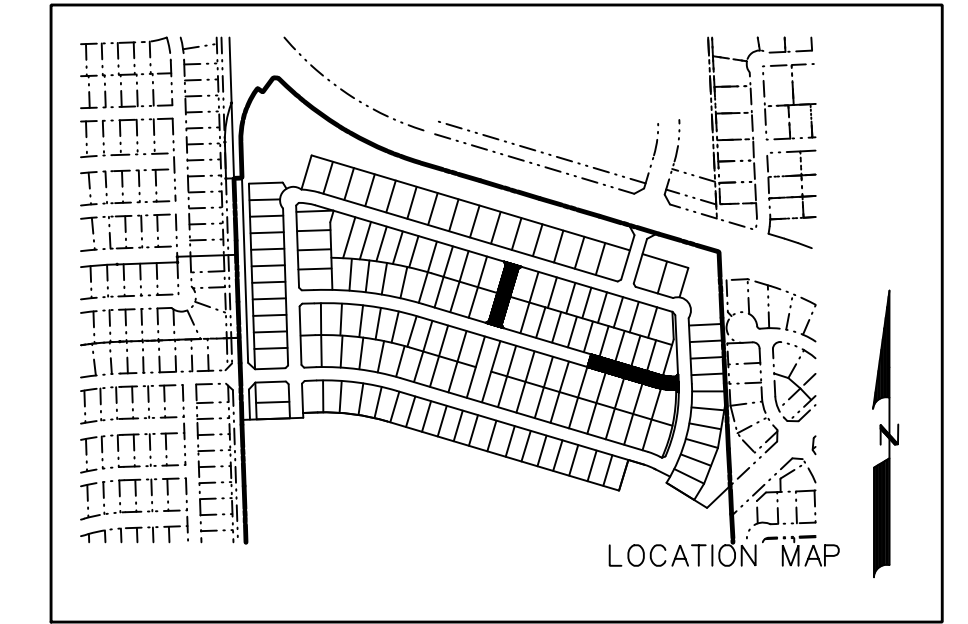


NOTE:  
ALL DIMENSIONS ARE TO BACK OF CURB UNLESS OTHERWISE NOTED.

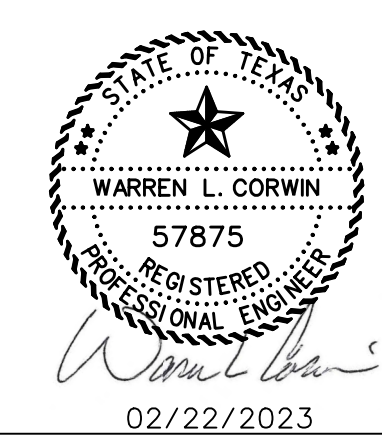
--- - SIDEWALK BY HOMEBUILDER  
--- - SIDEWALK BY DEVELOPER

ALL ADA RAMPS TO BE BUILT BY DEVELOPER.

- PAVING NOTES:
- Street pavement cement content to be no less than 6 sacks per cubic yard for machine placed and not less than 6.5 sacks per cubic for hand placed.
  - Sidewalk cement content of not less than 5.5 per cubic yard.
  - No sand allowed under pavement or sidewalks.
  - Minimum lime content shall be 6% of dry weight of material (at least 27 lbs.SY) compacted to 95% standard density.



RECORD DRAWINGS  
JANUARY 2024  
INFORMATION PROVIDED  
BY CONTRACTORS  
(NOT FIELD VERIFIED)



**CORWIN ENGINEERING, INC.**  
200 W. BELMONT, SUITE E  
ALLEN, TEXAS 75013 (972)396-1200  
TBPE FIRM #5951

DEVELOPMENT PLANS FOR  
**QUAIL HOLLOW  
PHASE I**  
ROCKWALL, TEXAS

SHADY OAKS DRIVE  
(STA. 12+00 TO END)  
ALOTIAN DRIVE

DRAWN BY	DESIGNED BY	CHECKED BY	SHEET NO.
JOB NUMBER	DATE	SCALE: HOR: 1"=40' VER: 1"=4'	10
22036	FEBRUARY 2023		