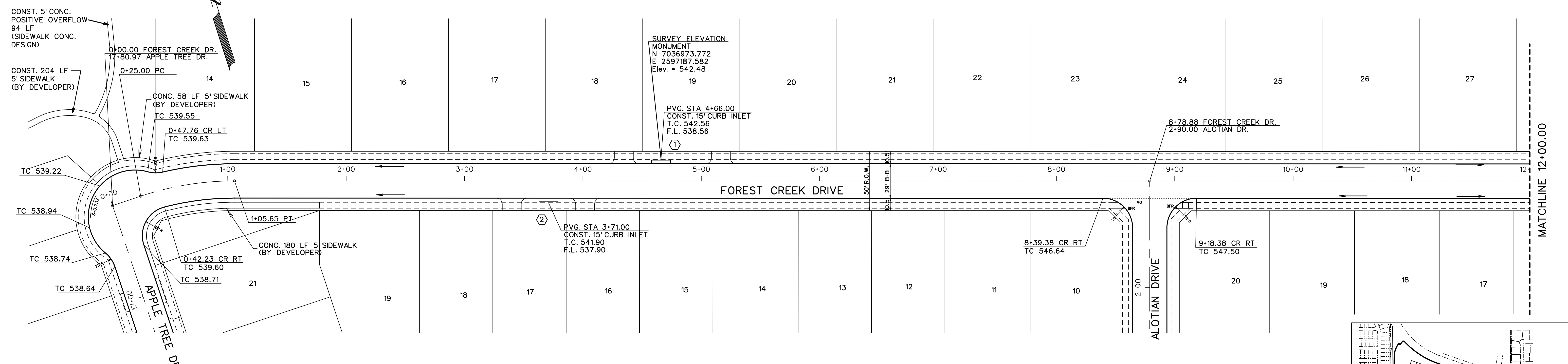
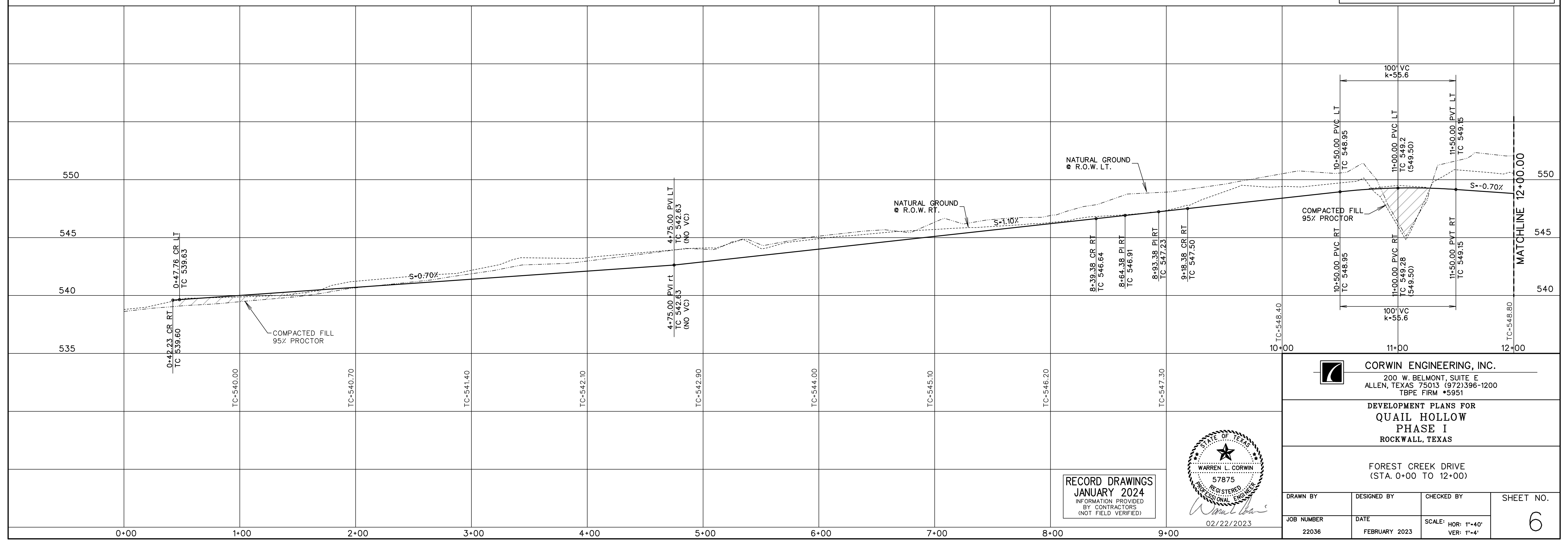


SCALE: 1" = 40'

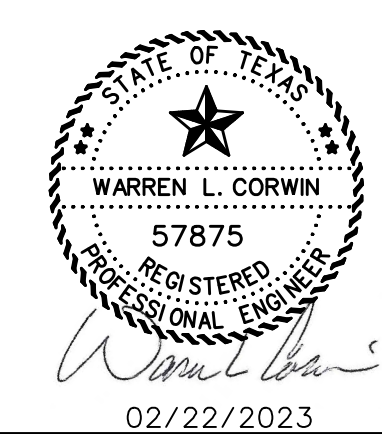


NOTE:
 ALL DIMENSIONS ARE TO BACK OF CURB UNLESS OTHERWISE NOTED.
 - - - - - SIDEWALK BY HOMEBUILDER
 - - - - - SIDEWALK BY DEVELOPER
 ALL ADA RAMPS TO BE BUILT BY DEVELOPER.

- PAVING NOTES:
- Street pavement cement content to be no less than 6 sacks per cubic yard for machine placed and not less than 6.5 sacks per cubic for hand placed.
 - Sidewalk cement content of not less than 5.5 per cubic yard.
 - No sand allowed under pavement or sidewalks.
 - Minimum lime content shall be 6% of dry weight of material (at least 27 lbs.SY) compacted to 95% standard density.



RECORD DRAWINGS
 JANUARY 2024
 INFORMATION PROVIDED
 BY CONTRACTORS
 (NOT FIELD VERIFIED)



CORWIN ENGINEERING, INC.
 200 W. BELMONT, SUITE E
 ALLEN, TEXAS 75013 (972)396-1200
 TBPE FIRM #5951

DEVELOPMENT PLANS FOR
QUAIL HOLLOW
 PHASE I
 ROCKWALL, TEXAS

FOREST CREEK DRIVE
 (STA. 0+00 TO 12+00)

DRAWN BY	DESIGNED BY	CHECKED BY	SHEET NO.
JOB NUMBER	DATE	SCALE: HOR: 1"=40' VER: 1"=4'	6
22036	FEBRUARY 2023		