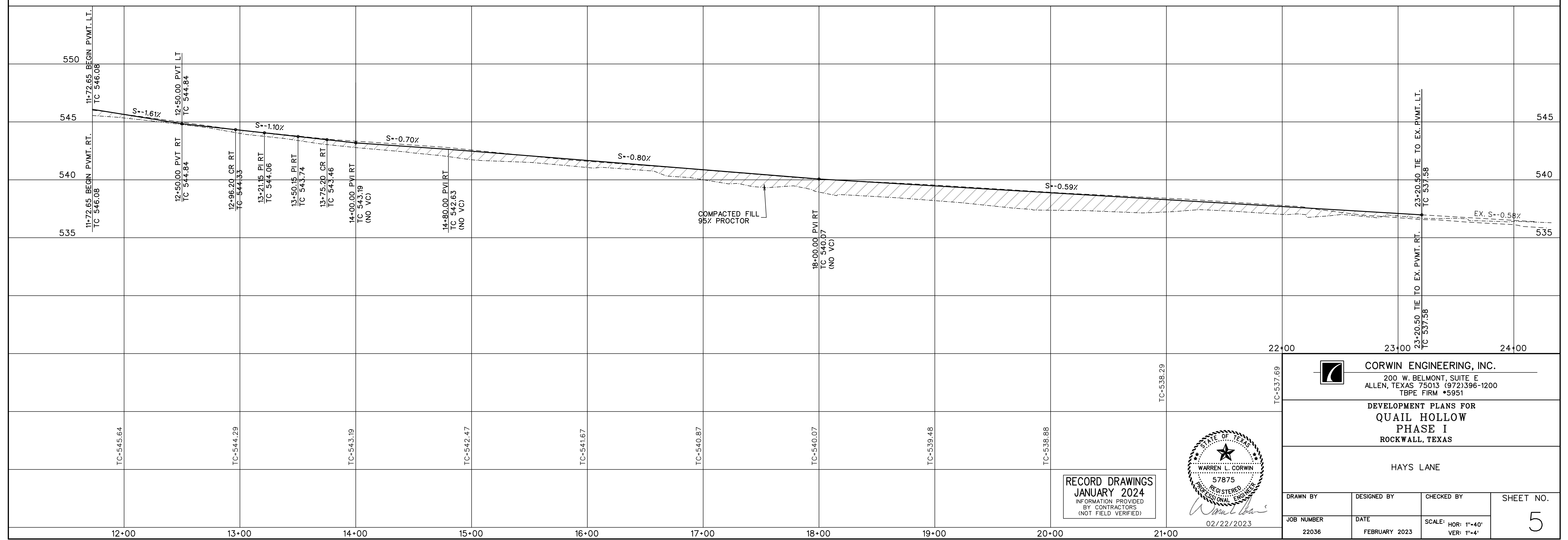
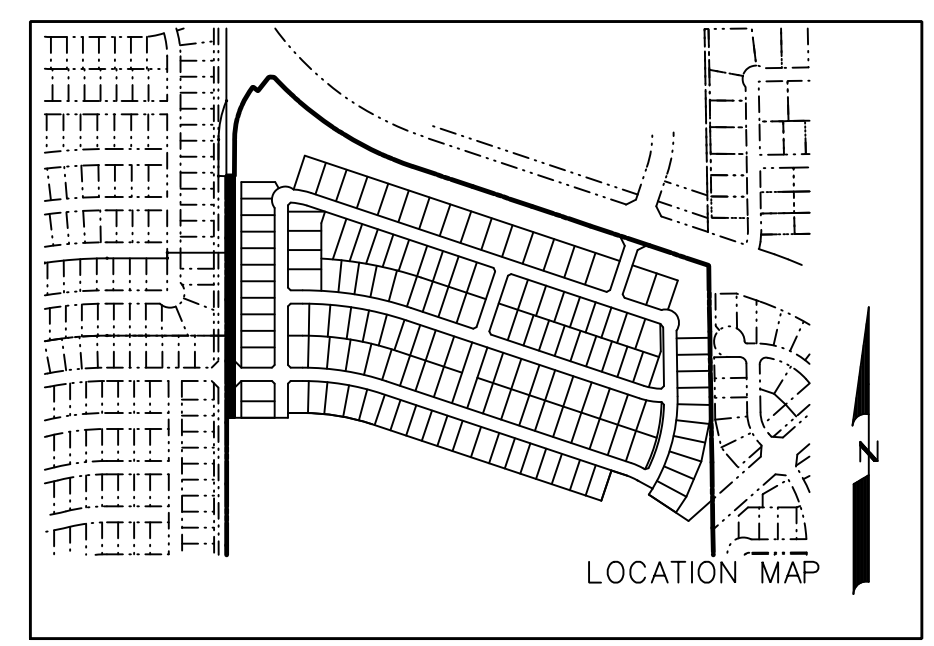


NOTE:
 ALL DIMENSIONS ARE TO BACK OF CURB UNLESS OTHERWISE NOTED.
 [Symbol] - SIDEWALK BY HOMEBUILDER
 [Symbol] - SIDEWALK BY DEVELOPER
 ALL ADA RAMPS TO BE BUILT BY DEVELOPER.

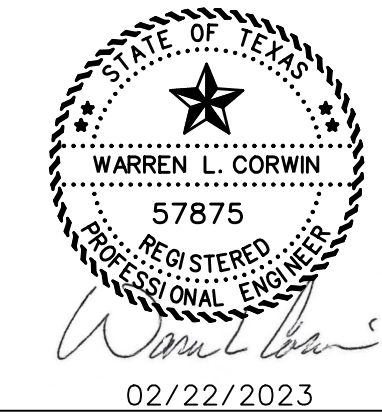
- PAVING NOTES:
1. Street pavement cement content to be no less than 6 sacks per cubic yard for machine placed and not less than 6.5 sacks per cubic for hand placed.
 2. Sidewalk cement content of not less than 5.5 per cubic yard.
 3. No sand allowed under pavement or sidewalks.
 4. Minimum lime content shall be 6% of dry weight of material (at least 27 lbs./CY) compacted to 95% standard density.



CORWIN ENGINEERING, INC.
 200 W. BELMONT, SUITE E
 ALLEN, TEXAS 75013 (972)396-1200
 TBPE FIRM #5951

DEVELOPMENT PLANS FOR
**QUAIL HOLLOW
 PHASE I**
 ROCKWALL, TEXAS

HAYS LANE



RECORD DRAWINGS
 JANUARY 2024
 INFORMATION PROVIDED
 BY CONTRACTORS
 (NOT FIELD VERIFIED)

DRAWN BY	DESIGNED BY	CHECKED BY	SHEET NO.
JOB NUMBER	DATE	SCALE: HOR: 1"=40' VER: 1"=4'	5
22036	FEBRUARY 2023		