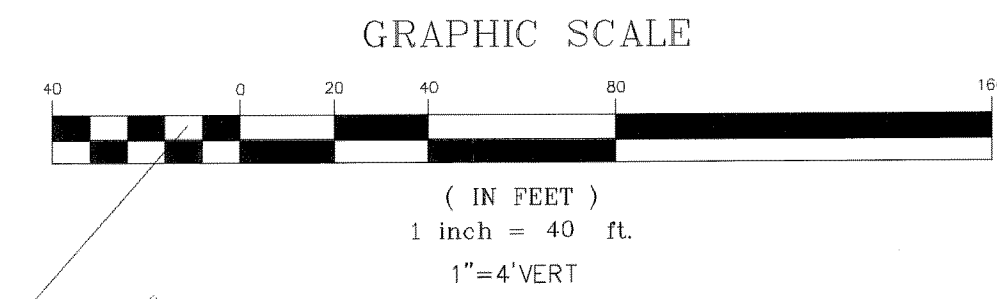
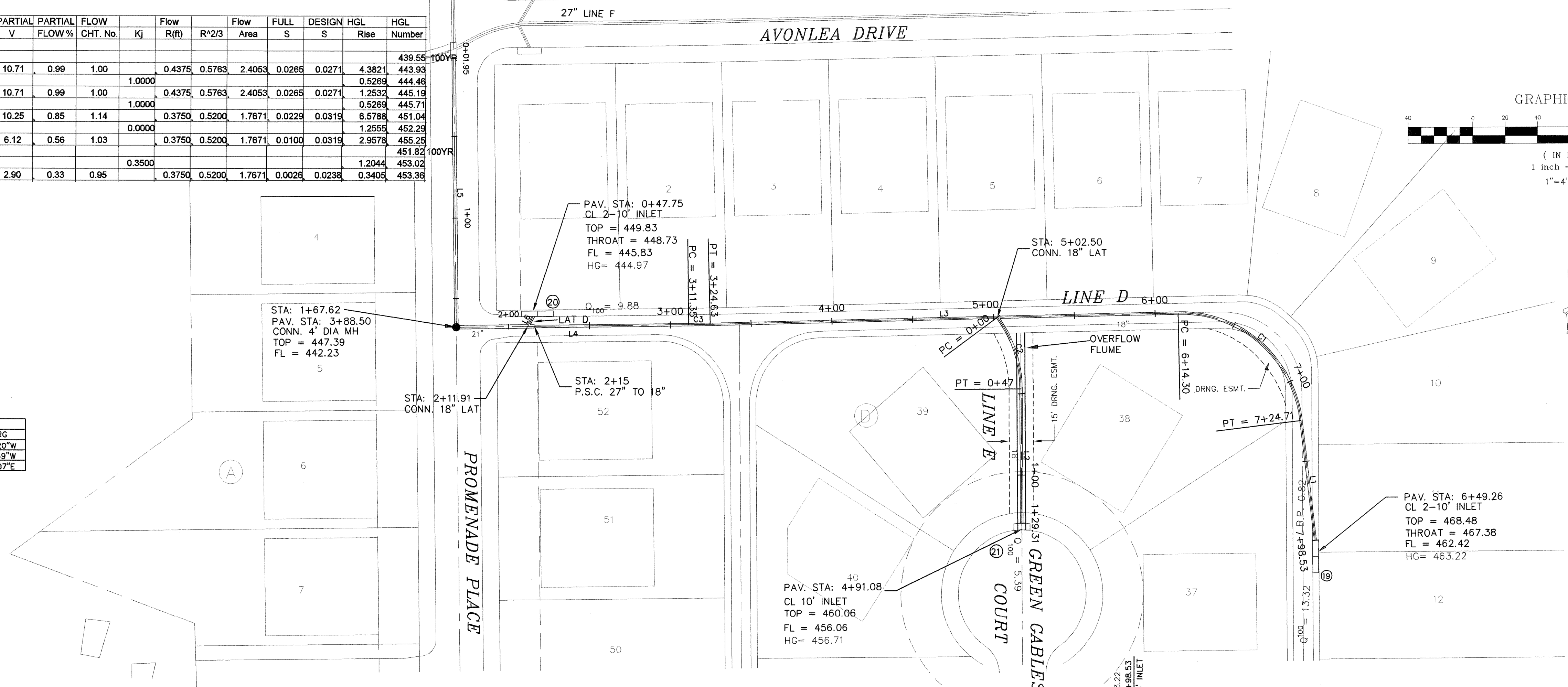


From	To	Length	Box Height	DESIGN Q100	Pipe Size (in)	CAP Q100	FULL V	PARTIAL V	PARTIAL FLOW %	FLOW CHT. No.	Flow Kj	Flow R(ft)	Flow R ² /3	Flow Area	FULL S	DESIGN S	HGL Rise	HGL Number
STMD																		439.55
Junction Loss	167.62	1.95	165.67	25.77	21	26.08	10.71	0.99	1.00		0.4375	0.5763	2.4053	0.0265	0.0271	4.3821	0.5269	444.46
Junction Loss	215.00	167.6	47.38	25.77	21	26.08	10.71	0.99	1.00		0.4375	0.5763	2.4053	0.0265	0.0271	1.2532	0.5269	445.71
Junction Loss	502.50	215	287.5	15.89	18	18.76	8.99	10.25	0.85	1.14	0.3750	0.5200	1.7671	0.0229	0.0319	6.5788	1.2555	452.29
Junction Loss	798.53	502.5	296.03	10.5	18	18.76	8.99	6.12	0.56	1.03	0.3750	0.5200	1.7671	0.0100	0.0319	2.9578	2.9578	451.82
STME											0.3500						1.2044	453.02
	129.31	0	129.31	5.39	18	16.21	3.05	2.90	0.33	0.95	0.3750	0.5200	1.7671	0.0025	0.0238	0.3405	0.3405	453.36

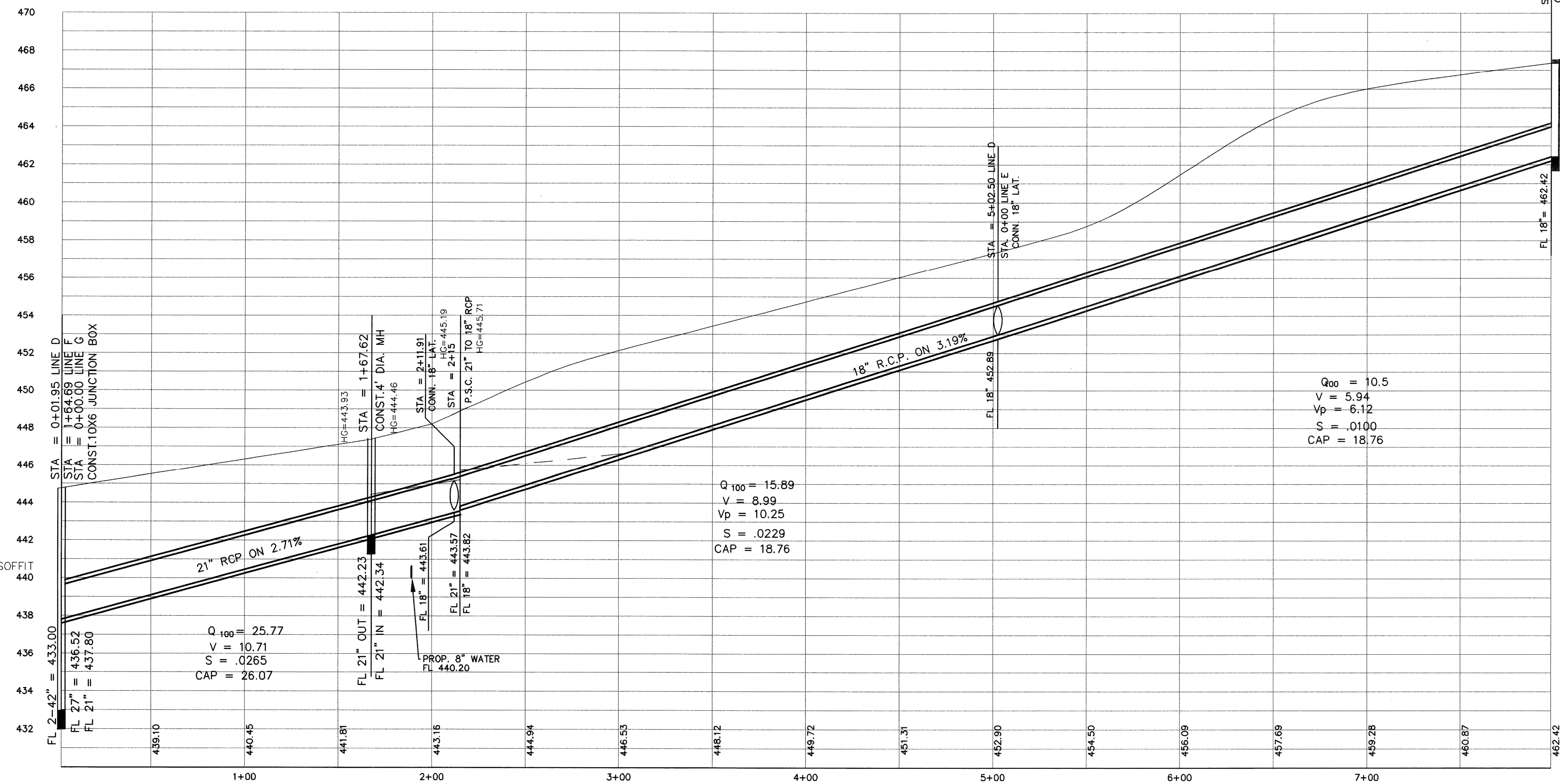
LINE	LENGTH	BEARING
L1	73.82	N06°57'01"W
L2	82.31	S00°23'36"E
L3	289.67	N88°42'20"E
L4	143.72	S89°19'57"W
L5	165.67	N00°40'03"W
L6	6.93	S29°19'57"W

CURVE	LENGTH	RADIUS	DELTA	TANGENT	CH DIST	CH BRG
C1	110.41	75.00	84°20'38"	67.94	100.70	N49°07'20"W
C2	47.00	75.00	35°54'26"	24.30	46.24	N18°20'49"W
C3	13.28	1211.53	0°37'40"	6.64	13.28	N89°01'07"E

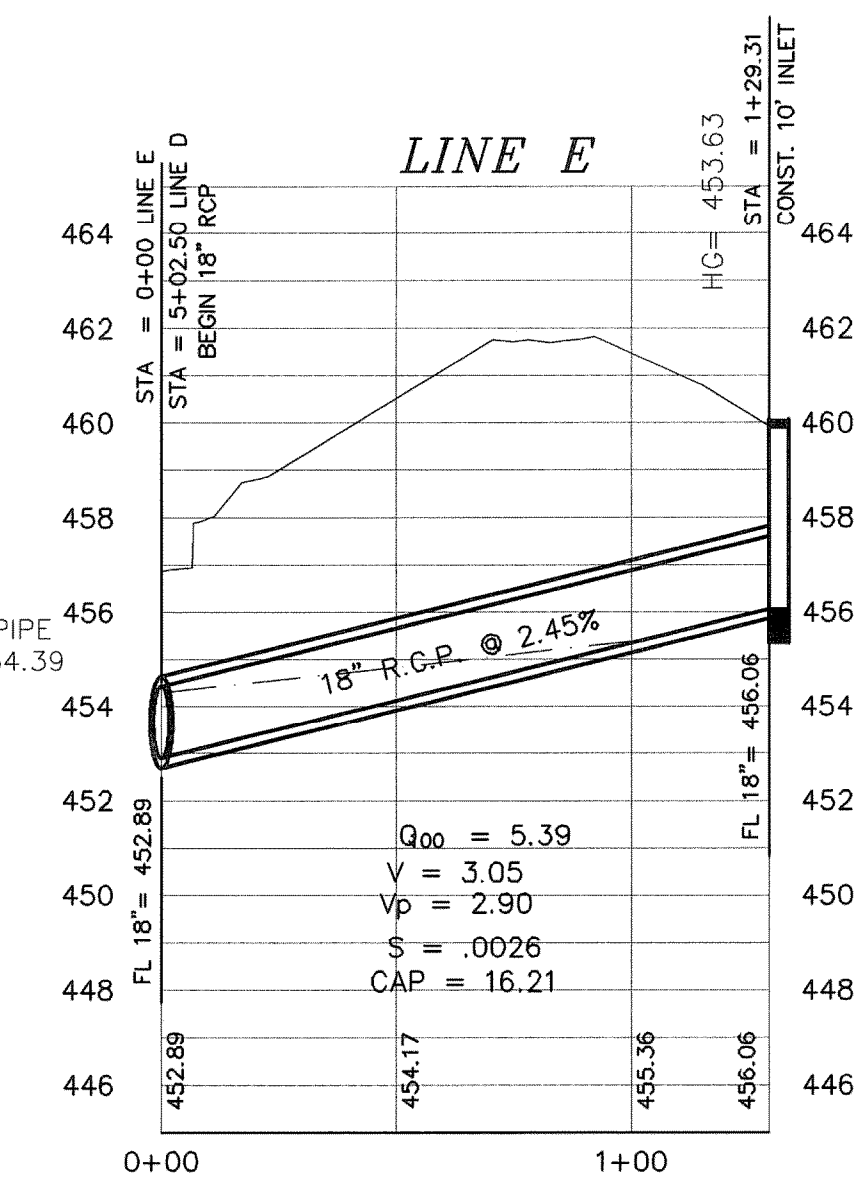


THE SEAL APPEARING ON THIS DRAWING IS THE PROPERTY OF W.L. DOUPHRATE II, ENGINEER, TEXAS. NO. 60102 ON.

DOUPHRATE & ASSOCIATES, INC.
 ENGINEERING - PROJECT MANAGEMENT - SURVEYING
 2235 RIDGE RD., # 200 ROCKWALL, TEXAS 75087
 PHONE: (972)771-9004 FAX: (972)771-9005



BENCHMARK:
 CITY OF DALLAS MONUMENT NO. EE81D
 ON NORTH SIDE OF DALTON ROAD 685' ±
 EAST OF NORTHWEST CORNER OF THIS
 TRACT. ELEV=463.08



STARTING H.G. = PIPE SOFFIT
 HG = 439.55

STARTING HG = TOP OF PIPE
 HG = 454.39

STORM SEWER PLAN & PROFILE
 LINES D & E
 PROMENADE HARBOR
 CITY OF ROCKWALL, ROCKWALL COUNTY, TEXAS

REVISION	
CHECKED	W.L.D.
DRAWN	K.E.B.
DATE	9/01
PROJECT	0050STM-2