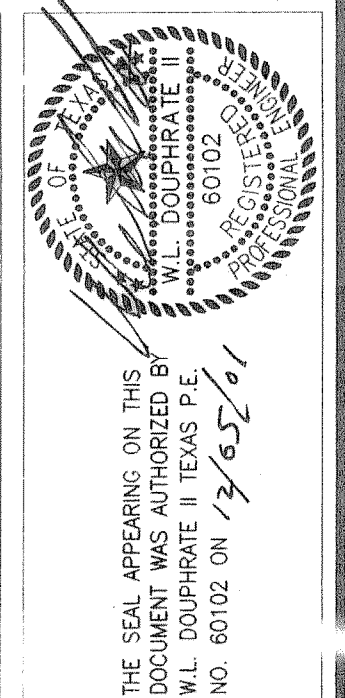
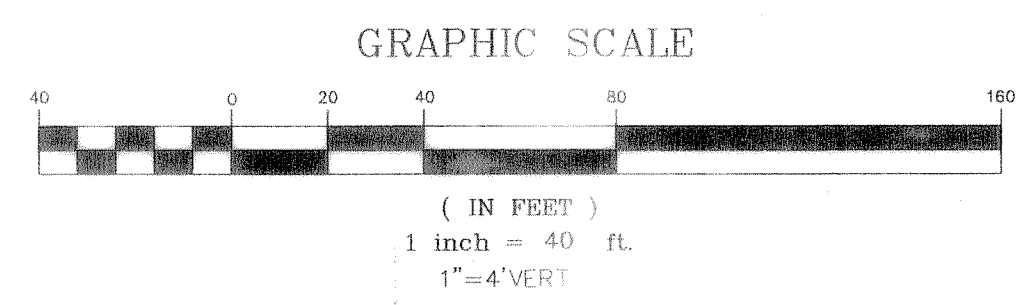


From	To	Length	Box Height	Width	DESIGN Q100	Pipe Size (in)	CAP Q100	FULL V	PARTIAL V	PARTIAL FLOW %	FLOW CHT. No.	Kj	Flow R(R)	R ² /3	Flow Area	FULL S	DESIGN HGL	HGL Number	
STMF																		435.90	START
164.69	-340	504.91			49.04	42	42.89	5.10	5.10	1.15	1.00		0.8790	0.9148	9.6211	0.0024	0.0018	1.1996	436.70
Junction Loss																			436.70
208.00	164.7	43.31			48.08	27	49.46	12.09	12.09	0.97	1.00		0.5625	0.6814	3.9761	0.0241	0.0255	1.0438	439.81
Junction Loss																			439.81
529.00	208	321			30.3	27	49.46	7.62	8.08	0.61	1.06		0.5625	0.6814	3.9761	0.0096	0.0255	3.0725	443.61
Junction Loss																			443.61
847.73	529	318.73			24.03	21	25.79	9.99	9.99	0.93	1.03		0.4375	0.5763	2.4053	0.0230	0.0265	7.3306	447.87
Junction Loss																			447.87
890.00	847.7	42.27			21.43	21	27.58	8.91	9.98	0.78	1.12		0.4375	0.5763	2.4053	0.0183	0.0303	0.7732	450.19
Junction Loss																			450.19
1244.00	890	354			11.14	18	18.28	6.30	6.75	0.61	1.07		0.3750	0.5200	1.7671	0.0112	0.0303	3.9814	455.03
Junction Loss																			455.03
1389.14	1244	145.14			11.34	18	18.28	2.99	3.23	0.35	0.90		0.3750	0.5200	1.7671	0.0038	0.0299	4.0558	456.10

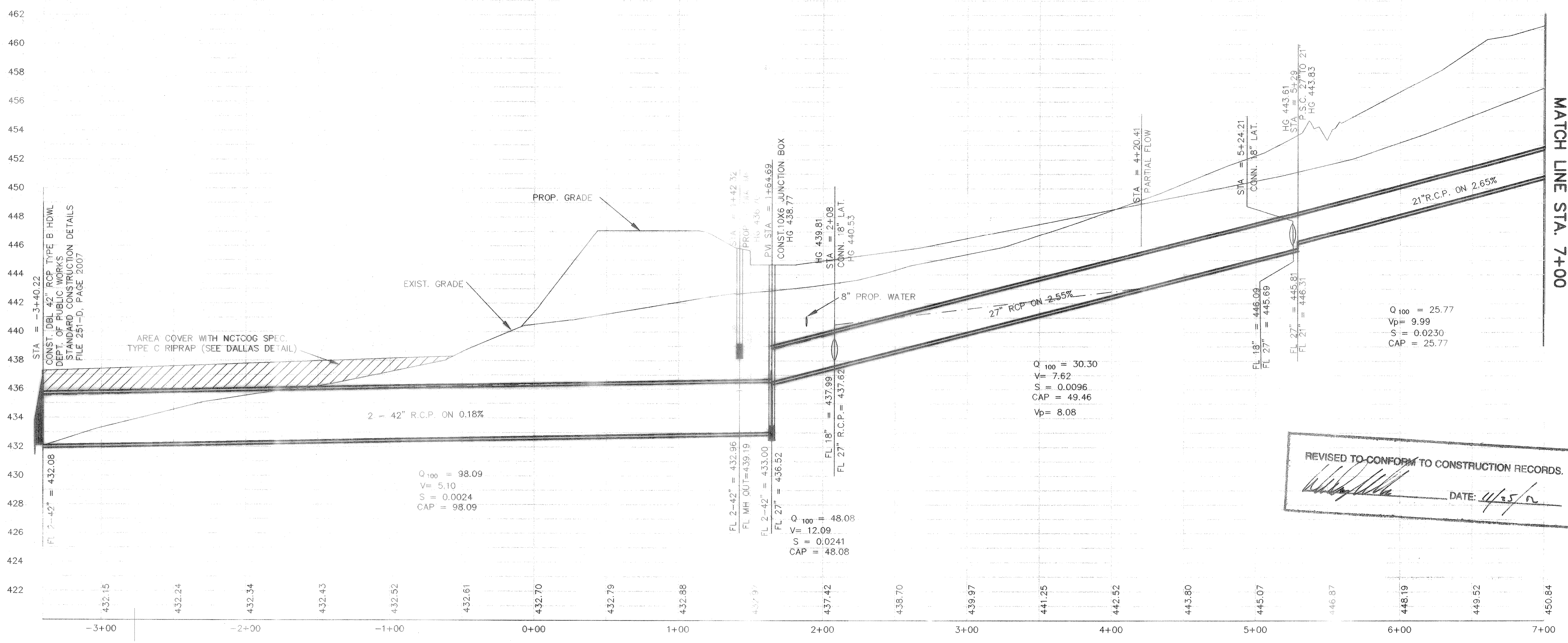
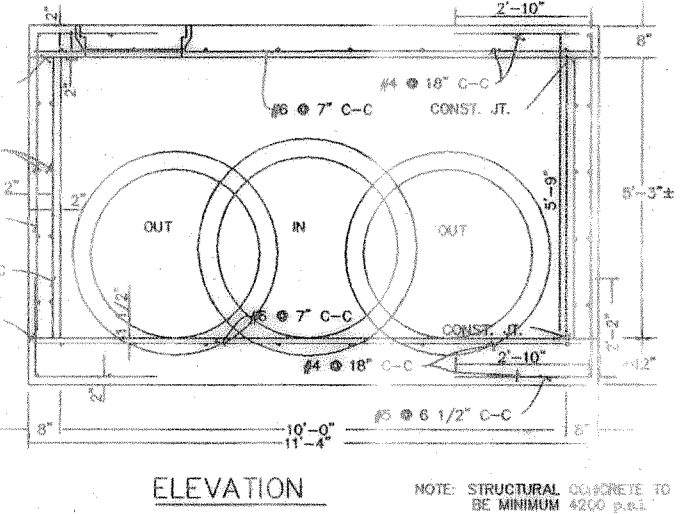
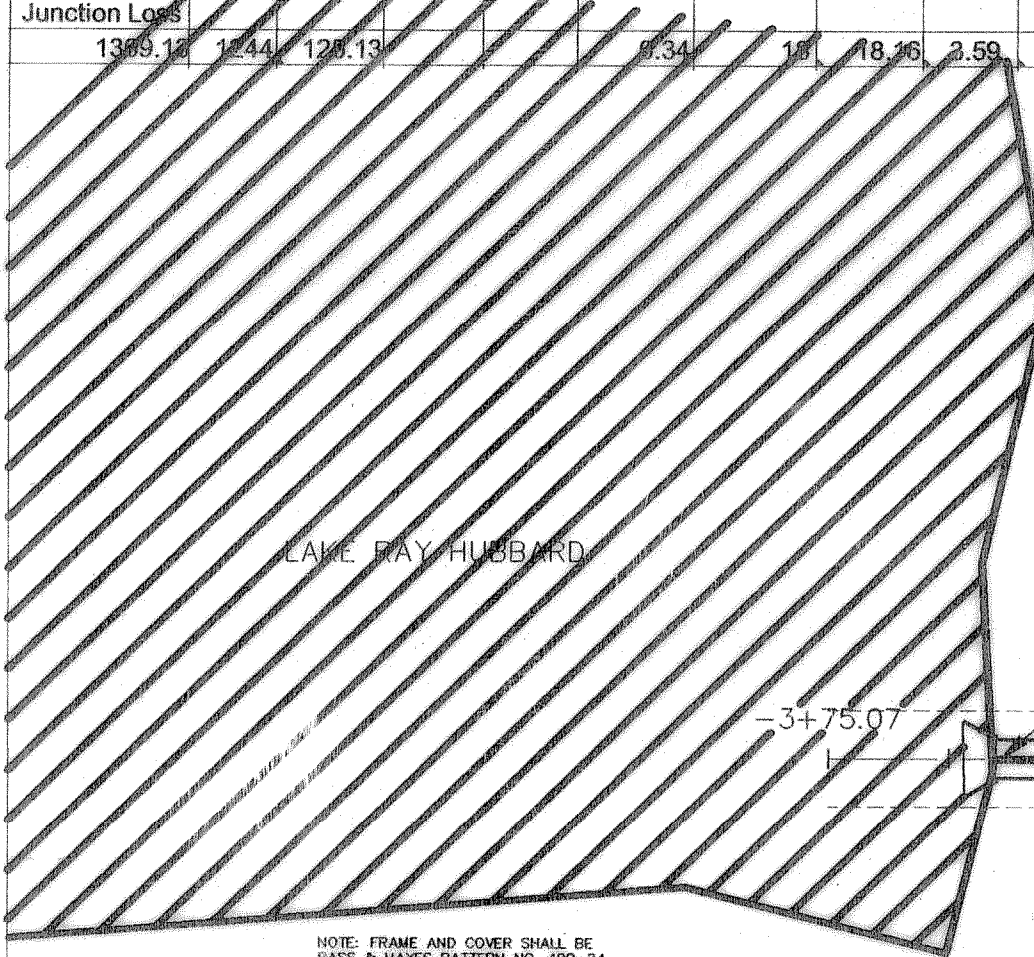
CURVE	LENGTH	RADIUS	DELTA	TANGENT	CH DIST	CH BRG
C1	356.97	225.00	90°54'04"	228.57	320.69	N45°50'38"W
C2	40.15	75.00	30°40'17"	20.57	39.67	S73°59'48"W
C3	40.15	75.00	30°40'17"	20.57	39.67	N73°59'48"E

LINE	LENGTH	BEARING
L1	326.98	N88°42'20"E
L2	16.74	N31°17'40"W
L3	15.67	N25°51'20"W
L4	17.43	S31°18'41"W
L5	134.78	N89°19'57"E
L6	375.07	N89°19'57"E



BENCHMARK:
CITY OF DALLAS MONUMENT NO. EE81D
ON NORTH SIDE OF DALTON ROAD 685'±
EAST OF NORTHWEST CORNER OF THIS TRACT.
ELEV=463.08

STA: -3+40.22
CONST. DBL 42" RCP
"YF2" B HEADWALL
END TREATMENT PER
CITY OF DALLAS DETAIL
(SEE DETAIL SHT)
NOTIFY DWU CONSTRUCTION
INSPECTION AT (214)948-4561
FORTY-EIGHT (48) HOURS
PRIOR TO CONSTRUCTION



REVISED TO CONFORM TO CONSTRUCTION RECORDS.
DATE: 11/25/07

DOUPHRADE & ASSOCIATES, INC.
ENGINEERING PROJECT MANAGEMENT SURVEYING
2235 RIDGE RD., # 200 ROCKWALL, TEXAS 75087
PHONE: (972)771-9004 FAX: (972)771-9005

STORM SEWER PLAN & PROFILE
LINE F
PROMENADE HARBOR
CITY OF ROCKWALL, ROCKWALL COUNTY, TEXAS

REVISION	DATE
W.L.D. CHECKED	
K.E.B. DRAWN	
9/01 DATE	
0050STM6 PROJECT	
33A OF	