

THE SEAL APPEARING ON THIS DOCUMENT WAS AUTHORIZED BY W.L. DOUPHRADE II, TEXAS P.E. NO. 80102 ON

DOUPHRADE & ASSOCIATES, INC.

ENGINEERING - PROJECT MANAGEMENT - SURVEYING

2235 RIDGE RD., # 200 ROCKWALL, TEXAS 75087
PHONE: (972)771-9004 FAX: (972)771-9005

STORM SEWER PLAN & PROFILE
LINE A

PROMENADE HARBOR
CITY OF ROCKWALL, ROCKWALL COUNTY, TEXAS

REVISION

W.L.D.

CHECKED

K.E.B.

DRAWN

9/01

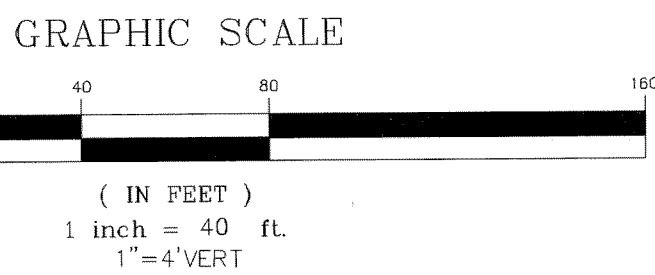
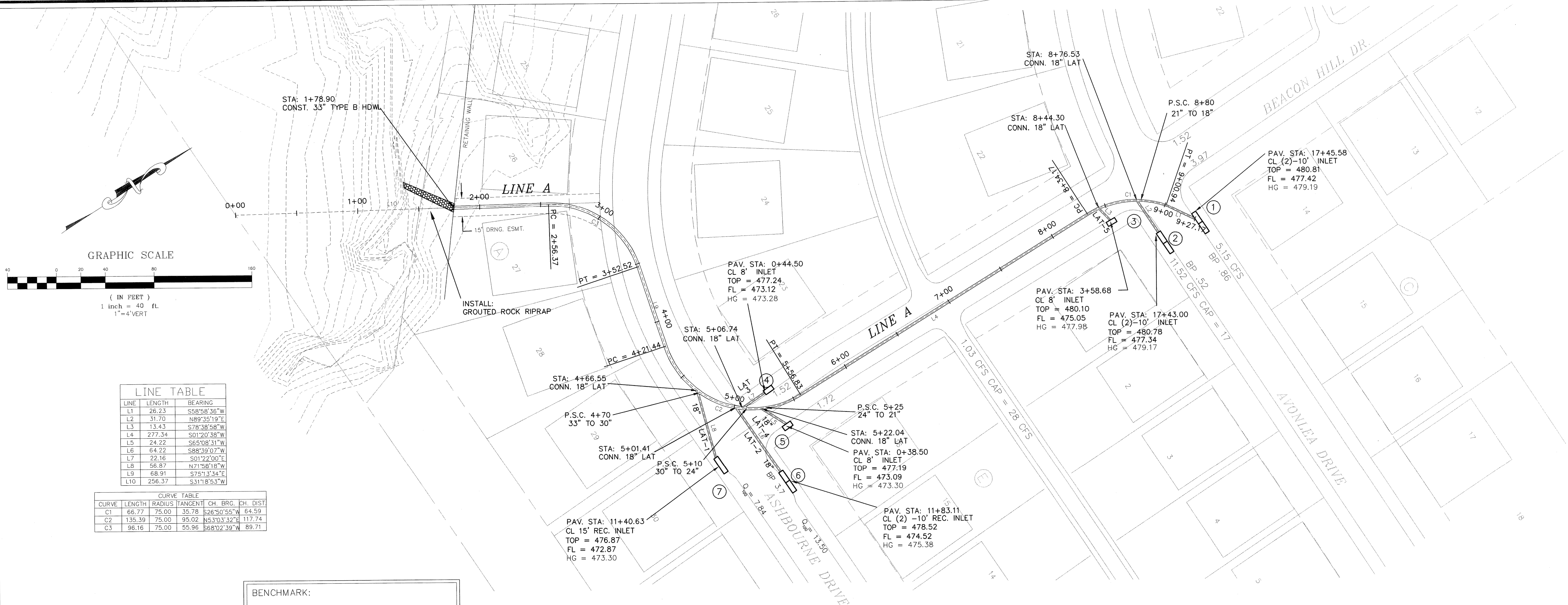
DATE

0050STM

PROJECT

30

OF



LINE TABLE				
LINE	LENGTH	BEARING	CH. BRG.	CH. DIST.
L1	26.23	S58°58'36"W		64.59
L2	31.70	N89°35'19"E		117.74
L3	13.43	S78°38'58"W		89.71
L4	277.34	S01°20'38"W		
L5	24.22	S65°09'31"W		
L6	64.22	S88°39'07"W		
L7	22.16	S01°22'00"E		
L8	56.87	N71°58'18"W		
L9	68.91	S75°13'34"E		
L10	256.37	S31°18'53"W		

CURVE TABLE					
CURVE	LENGTH	RADIUS	TANGENT	CH. BRG.	CH. DIST.
C1	66.77	75.00	35.78	S26°50'55"W	64.59
C2	135.39	75.00	95.02	N53°03'32"E	117.74
C3	96.16	75.00	55.96	S68°02'39"W	89.71

BENCHMARK:
CITY OF DALLAS MONUMENT NO. EE81D
ON NORTH SIDE OF DALTON ROAD 685'±
EAST OF NORTHWEST CORNER OF THIS
TRACT. ELEV=463.08

