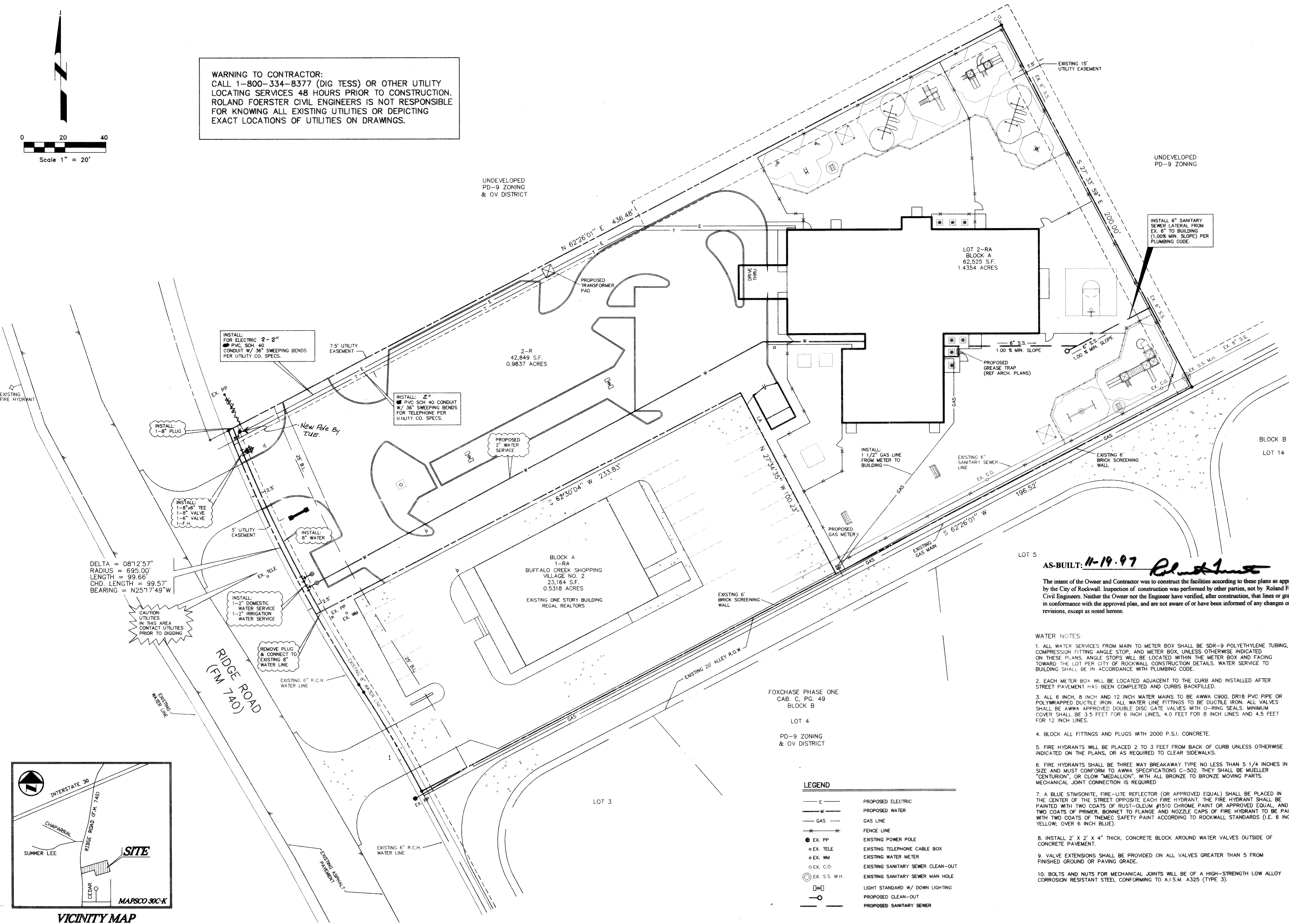
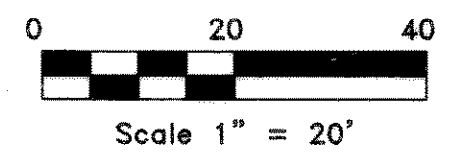


**WARNING TO CONTRACTOR:**  
 CALL 1-800-334-8377 (DIG TESS) OR OTHER UTILITY LOCATING SERVICES 48 HOURS PRIOR TO CONSTRUCTION. ROLAND FOERSTER CIVIL ENGINEERS IS NOT RESPONSIBLE FOR KNOWING ALL EXISTING UTILITIES OR DEPICTING EXACT LOCATIONS OF UTILITIES ON DRAWINGS.



DELTA = 08°12'57"  
 RADIUS = 695.00'  
 LENGTH = 99.66'  
 CHD. LENGTH = 99.57'  
 BEARING = N25°17'49"W

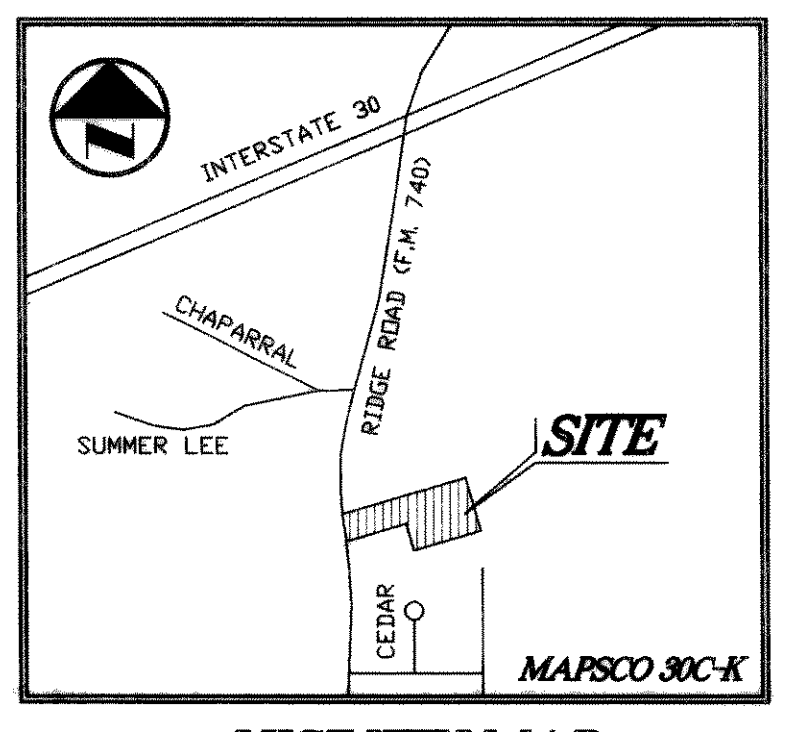
CAUTION:  
 UTILITIES IN THIS AREA CONTACT UTILITIES PRIOR TO DIGGING

**AS-BUILT: 11-19-97**  
 The intent of the Owner and Contractor was to construct the facilities according to these plans as approved by the City of Rockwall. Inspection of construction was performed by other parties, not by Roland Foerster Civil Engineers. Neither the Owner nor the Engineer have verified, after construction, that lines or grades are in conformance with the approved plan, and are not aware of or have been informed of any changes or revisions, except as noted hereon.

- WATER NOTES:**
1. ALL WATER SERVICES FROM MAIN TO METER BOX SHALL BE SDR-9 POLYETHYLENE TUBING, COMPRESSION FITTING ANGLE STOP, AND METER BOX, UNLESS OTHERWISE INDICATED ON THESE PLANS. ANGLE STOPS WILL BE LOCATED WITHIN THE METER BOX AND FACING TOWARD THE LOT PER CITY OF ROCKWALL CONSTRUCTION DETAILS. WATER SERVICE TO BUILDING SHALL BE IN ACCORDANCE WITH PLUMBING CODE.
  2. EACH METER BOX WILL BE LOCATED ADJACENT TO THE CURB AND INSTALLED AFTER STREET PAVEMENT HAS BEEN COMPLETED AND CURBS BACKFILLED.
  3. ALL 6 INCH, 8 INCH AND 12 INCH WATER MAINS TO BE AWWA C900, DR18 PVC PIPE OR POLYWRAPPED DUCTILE IRON. ALL WATER LINE FITTINGS TO BE DUCTILE IRON. ALL VALVES SHALL BE AWWA APPROVED DOUBLE DISC GATE VALVES WITH O-RING SEALS. MINIMUM COVER SHALL BE 3.5 FEET FOR 6 INCH LINES, 4.0 FEET FOR 8 INCH LINES AND 4.5 FEET FOR 12 INCH LINES.
  4. BLOCK ALL FITTINGS AND PLUGS WITH 2000 P.S.I. CONCRETE.
  5. FIRE HYDRANTS WILL BE PLACED 2 TO 3 FEET FROM BACK OF CURB UNLESS OTHERWISE INDICATED ON THE PLANS, OR AS REQUIRED TO CLEAR SIDEWALKS.
  6. FIRE HYDRANTS SHALL BE THREE WAY BREAKAWAY TYPE NO LESS THAN 5 1/4 INCHES IN SIZE AND MUST CONFORM TO AWWA SPECIFICATIONS C-502. THEY SHALL BE MUELLER "CENTURION", OR CLOW "MEDALLION", WITH ALL BRONZE TO BRONZE MOVING PARTS. MECHANICAL JOINT CONNECTION IS REQUIRED.
  7. A BLUE STIMSONITE, FIRE-LITE REFLECTOR (OR APPROVED EQUAL) SHALL BE PLACED IN THE CENTER OF THE STREET OPPOSITE EACH FIRE HYDRANT. THE FIRE HYDRANT SHALL BE PAINTED WITH TWO COATS OF RUST-OLEUM #1510 CHROME PAINT OR APPROVED EQUAL, AND TWO COATS OF PRIMER, BONNET TO FLANGE AND NOZZLE CAPS OF FIRE HYDRANT TO BE PAINTED WITH TWO COATS OF TNESEC SAFETY PAINT ACCORDING TO ROCKWALL STANDARDS (I.E. 6 INCH YELLOW; OVER 6 INCH BLUE).
  8. INSTALL 2' X 2' X 4" THICK, CONCRETE BLOCK AROUND WATER VALVES OUTSIDE OF CONCRETE PAVEMENT.
  9. VALVE EXTENSIONS SHALL BE PROVIDED ON ALL VALVES GREATER THAN 5 FROM FINISHED GROUND OR PAVING GRADE.
  10. BOLTS AND NUTS FOR MECHANICAL JOINTS WILL BE OF A HIGH-STRENGTH LOW ALLOY CORROSION RESISTANT STEEL CONFORMING TO A.I.S.I. A325 (TYPE 3).

**LEGEND**

—E—	PROPOSED ELECTRIC
—W—	PROPOSED WATER
—GAS—	GAS LINE
—X—X—	FENCE LINE
● EX. PP	EXISTING POWER POLE
○ EX. TELE	EXISTING TELEPHONE CABLE BOX
○ EX. WM	EXISTING WATER METER
○ EX. C.O.	EXISTING SANITARY SEWER CLEAN-OUT
○ EX. S.S. M.H.	EXISTING SANITARY SEWER MAN HOLE
□	LIGHT STANDARD W/ DOWN LIGHTING
○	PROPOSED CLEAN-OUT
—○—	PROPOSED SANITARY SEWER



A New Building For:  
**Primrose School Franchising Company**  
 199 South Erwin Street  
 Cartersville, Georgia 30120

These drawings and the design represented hereby are the exclusive property of Primrose School Franchising Co. No part of these drawings may be reproduced, stored in a retrieval system, or transmitted in any form or by any means, electronic, mechanical, photocopying, recording, or by any information storage and retrieval system, without the express written consent of Primrose School Franchising Co. Any unauthorized use will be subject to legal action.

**ROLAND FOERSTER CIVIL ENGINEERS**  
 1315 E. 19TH STREET, SUITE 1A  
 PLANO, TEXAS 75074  
 (972) 881-0725  
 FAX (972) 509-1448

3-4-97	Revise Elec. & Tele. Conduit to 2"	REVISIONS:
2-26-97	REVISED TUBING TYPE	
2-25-97	REVISED	
2-4-97	REVISED MULCH PIT AREA	

Site: **RIDGE ROAD (F.M. 740) ROCKWALL, TEXAS**  
 Drawing Title: **UTILITY PLAN**  
 Date: **JANUARY 20, 1997**  
 Sheet: **C-3**

C:\WORK\PRIN-ROCK\UTILITY 180 FEB 26 12:59:35 1997 DRAWN BY WEP / RFCE