

WATER LINE LOCATED 5.5' BACK OF CURB.  
 SANITARY SEWER LOCATED 5' BACK OF CURB.  
 ALL WATER SERVICES ARE 4".  
 ALL SEWER SERVICES ARE 1" POLYETHYLENE.  
 ALL WATER AND SEWER LINE TO BE CLASS 200  
 C-900 DR 14 PVC.  
 SEWER LINE:  
 COVER ABOVE THE PIPE > 10' USE SDR 26 PVC  
 COVER ABOVE THE PIPE < 10' USE SDR 35 PVC  
 RIM ELEVATIONS FOR SS MANHOLES ARE APPROX.

**CAUTION !!!**  
**UNDERGROUND UTILITIES**

EXISTING UTILITIES AND UNDERGROUND FACILITIES INDICATED ON THESE PLANS HAVE BEEN LOCATED FROM REFERENCE INFORMATION SUPPLIED BY VARIOUS OWNERS OF THE FACILITIES. THE ENGINEER DOES NOT ACCEPT THE RESPONSIBILITY FOR THE UTILITY LOCATIONS SHOWN. IT SHALL BE THE RESPONSIBILITY OF THE CONTRACTOR TO VERIFY BOTH HORIZONTALLY AND VERTICALLY THE LOCATION OF ALL EXISTING UTILITIES AND UNDERGROUND FACILITIES PRIOR TO CONSTRUCTION. TO TAKE NECESSARY PRECAUTIONS IN ORDER TO PROTECT ALL FACILITIES ENCOUNTERED, AND TO NOTIFY THE ENGINEER PROMPTLY OF ALL CONFLICTS OF THE WORK WITH EXISTING FACILITIES. THE CONTRACTOR SHALL PRESERVE AND PROTECT ALL EXISTING UTILITIES FROM DAMAGE DURING CONSTRUCTION. ANY DAMAGE BY THE CONTRACTOR TO EXISTING UTILITIES SHALL BE REPAIRED BY THE CONTRACTOR AT HIS EXPENSE. CONTACT ALL POSSIBLE UTILITY AND UNDERGROUND FACILITY OWNERS.

**WARNING!!!**  
 EXIST. UNDERGROUND UTIL. CONTRACTOR TO VERIFY LOCATION AND DEPTH OF EXISTING UTILITIES PRIOR TO CONSTRUCTION.

1+44.43 (32.50' LT) NORTH ALAMO ROAD= STA. 1+94.02 (28.0' LT) NORTH ALAMO ROAD= INSTALL: 1-8" 30' BEND

STA. 3+86.05 (31.02' LT) NORTH ALAMO ROAD= CONN. TO EX.16" WATER LINE= INSTALL: 1-16"X8" TAPPING SLEEVE & VALVE

STA. 3+85.72 (28.00' LT) NORTH ALAMO ROAD= INSTALL: 1-8" X 8" TEE 1-8" GATE VALVE

STA. 4+23.99 (47.49' LT) NORTH ALAMO ROAD= 75.60 LF OF 8" STUBOUT NORTH @ 0.35% FL = 494.04

STA. 7+04.24 (2.5' RT) NORTH ALAMO ROAD= CONN. TO EX.16" WATER LINE= INSTALL: 1-16"X8" TAPPING SLEEVE & VALVE

STA. 10+24.25 (2.5' RT) NORTH ALAMO ROAD= CONN. TO EX.16" WATER LINE= INSTALL: 1-16"X8" TAPPING SLEEVE & VALVE

STA. 10+23.63 (27.50' RT) NORTH ALAMO ROAD= INSTALL: 1-8"X8" TEE 1-8" GATE VALVE

STA 10+83.56 (7.17' RT) NORTH ALAMO ROAD= STA. 5+00 LINE "D" CONST. STD 4" DIA M.H. RIM= 527.32

STA 11+14.51 (32.50' LT) NORTH ALAMO ROAD= STA. 5+84.40 LINE "D" END & PLUG 8" SS FL= 520.40

STA 11+27.09 (27.50' LT) NORTH ALAMO ROAD= INSTALL: 1-8" X 6" TEE 1-8" GATE VALVE WITH 6" LEAD

STA. 11+14.52 (27.50' LT) NORTH ALAMO ROAD= INSTALL: 1-8"X8" TEE 1-8" GATE VALVE 20 LF. STUBOUT EAST & WEST

STA. 11+14.67 (27.50' RT) NORTH ALAMO ROAD= INSTALL: 1-8" 90° BEND

STA. 14+70.24 (20' LT) BRYN MAHR LANE= INSTALL: 1-8" X 6" TEE 1-8" GATE VALVE 1-FIRE HYDRANT WITH 6" LEAD

STA. 0+71.85 (19.5' LT) PRINCETON WAY= STA. 4+00 LINE "C" CONST. STD 4" DIA M.H. RIM= 514.68

STA 0+44.45 (20' RT) PRINCETON WAY= INSTALL: 1-8" X 6" TEE 1-8" GATE VALVE 1-FIRE HYDRANT WITH 6" LEAD

STA 0+28.84 (19.50' LT) ST JOHN'S PLACE= STA. 7+16.10 LINE "A" CONST. STD 4" DIA M.H. RIM= 503.08

STA 0+53.07 (20' RT) ST JOHN'S PLACE= INSTALL: 1-8" X 6" TEE 1-8" GATE VALVE 1-FIRE HYDRANT WITH 6" LEAD

STA 3+34.70 (20' RT) ST JOHN'S PLACE= INSTALL: 1-8" X 6" TEE 1-8" GATE VALVE 1-FIRE HYDRANT WITH 6" LEAD

STA 3+58.01 (23.11' RT) ST JOHN'S PLACE= INSTALL: 1-8" 90° BEND

STA 3+28.16 (20' RT) PRINCETON WAY= INSTALL: 1-8" X 6" TEE 1-8" GATE VALVE 1-FIRE HYDRANT WITH 6" LEAD

STA. 6+86.05 (20' LT) CORNEL DRIVE= INSTALL: 1-8" X 6" TEE 1-8" GATE VALVE

STA 7+20.55 (20' LT) CORNEL DRIVE= INSTALL: 1-8" X 6" TEE 1-8" GATE VALVE 1-FIRE HYDRANT WITH 6" LEAD

STA 10+99.09 (20' LT) BRYN MAHR LANE= INSTALL: 1-8" X 6" TEE 1-8" GATE VALVE 1-FIRE HYDRANT WITH 6" LEAD

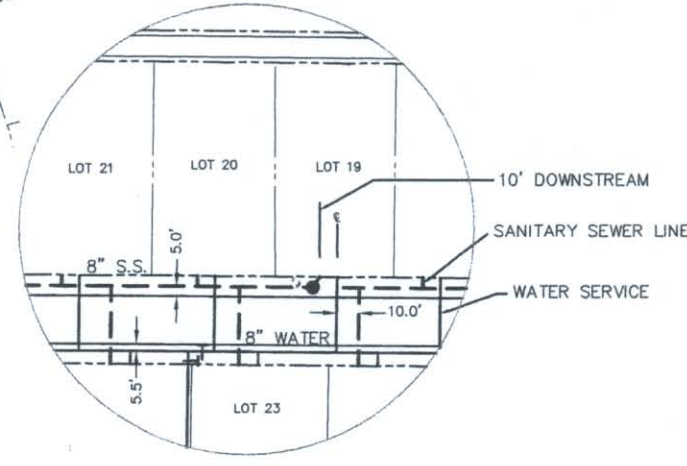
STA. 9+97.57 (11.92' LT) CORNEL DRIVE= INSTALL: 1-8" 90° BEND

STA. 10+21.45 (20.43' RT) BRYN MAHR LANE= STA. 6+49.29 LINE "B"= STA. 3+41.02 LINE "B1"= STA. 0+00 LINE "D" CONST. 4" DIA INTERNAL DROP M.H. RIM= 504.42

STA. 7+05.55 (19.5' RT) CORNEL DRIVE= STA. 3+20.00 LINE "B"= STA. 0+0 LINE "B1"= STA. 0+00 LINE "C" CONST. STD 4" DIA INTERNAL DROP M.H. RIM= 495.51

STA. 9+75.95 (21.21' RT) CORNEL DRIVE= STA. 2+75.31 LINE "B1"= CONST. STD 4" DIA M.H. RIM= 503.43

STA. 4+80.58 (207.00' RT) CORNEL DRIVE= STA. 1+00 LINE "A" CONN. TO WETWELL



**LOT SERVICES DETAIL**  
 N.T.S.

SANITARY SEWER CURVE TABLE

CURVE	LENGTH	RADIUS	DELTA	TANGENT	CHORD	BEARING
SSC100	89.66'	319.50'	16°04'41"	45.12'	89.36'	N33°37'15"E
SSC101	55.70'	200.00'	15°57'23"	28.03'	55.52'	N58°27'18"W
SSC102	115.05'	200.00'	32°57'35"	59.17'	113.47'	S68°09'23"E
SSC103	179.45'	639.50'	16°04'41"	90.32'	178.86'	N33°37'15"E
SSC104	269.26'	955.81'	16°08'25"	135.53'	268.37'	N33°37'15"E

WATER CURVE TABLE

CURVE	LENGTH	RADIUS	DELTA	TANGENT	CHORD	BEARING
WTC1	202.44'	528.00'	21°58'02"	102.48'	201.20'	N82°04'26"W
WTC2	78.57'	280.00'	16°04'41"	39.55'	78.31'	N33°37'15"E
WTC3	168.37'	600.00'	16°04'41"	84.74'	167.82'	N33°37'15"E
WTC4	258.16'	920.00'	16°04'41"	129.94'	257.32'	N33°37'15"E

⊙ DENOTES WATER LINE LOCATED UNDER STORM LINE

**APPROVED FOR CONSTRUCTION**

MAR 20 2006

**THE PRESERVE PH. 3**  
 Lift Station Address  
 6/22/07

**Prop. Lift Station**  
 1890 North Lakeshore Drive

**Parkview Drive**

**SOUTHWESTERN DRIVE**

THESE CONSTRUCTION PLANS WERE PREPARED UNDER THE RESPONSIBLE SUPERVISION OF MD. NAIM UDDIN KHAN, REGISTERED PROFESSIONAL ENGINEER NO. 87776.

THE SEAL APPEARING ON THIS DOCUMENT WAS AUTHORIZED BY MD. NAIM UDDIN KHAN, P.E. #87776

H. ANNA SURVEY, ABSTRACT NO. 98  
 J.H.B. JONES SURVEY, ABSTRACT NO. 124  
 CITY OF ROCKWALL, ROCKWALL COUNTY, TEXAS

**WATER AND SANITARY SEWER PLAN**  
**THE PRESERVE PH. 3**

Scale: 1"=60'  
 Date: 5-1-06  
 Designed By: MS  
 Drawn By: MS  
 Checked By: NK  
 File: 406023w1.dwg View: W51  
 Project No.: 406023.01

SHEET 26

**Winkelmann & Associates, Inc.**  
 CONSULTING CIVIL ENGINEERS & SURVEYORS  
 8750 HILLCREST WOOD DR. SUITE 100  
 DALLAS, TEXAS 75243  
 (972) 961-7899 FAX  
 COPYRIGHT © 2000, WINKELMANN & ASSOCIATES, INC.

APPROV. \_\_\_\_\_  
 REVISION \_\_\_\_\_  
 DATE \_\_\_\_\_  
 No. \_\_\_\_\_

CONTROL MONUMENT #R010 @ E/4 NORTH OF N. ALAMO IN MEDIAN (DBB)