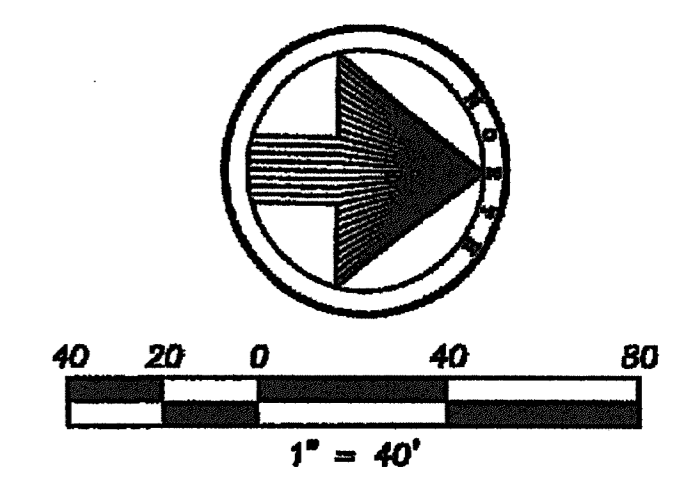


CURVE DATA					
CURVE	RADIUS	DELTA	LENGTH	CHORD	BEARING
C1	225.00'	2716.47'	83.57'	83.09'	S89°48'43"W
C2	228.50'	16337.31'	235.26'	234.23'	S28°43'43"W
C3	773.50'	13789.42'	188.71'	188.24'	N32°01'00"E



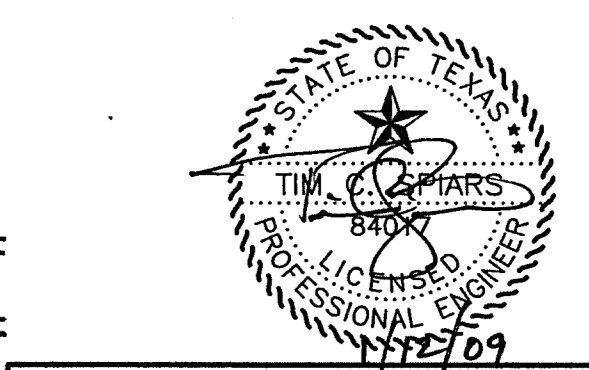
***NOTE:**
THESE LOTS (1, 2, & 3, BLOCK R)
CAN'T BE BUILT UNTIL PHASE 1
CONSTRUCTION

STA. 0+00 LINE "I"
CONST. STD. 4" DIA. M.H.
SEE OFFSITE SEWER PLAN
BY WINKLEMANN ASSOC.

POS. 1+13 LINE "I"
CONST. STD. 4" DIA. M.H.
RIM ELEV. 561.25-561.33

STA. 5+37 LINE "I"
CONST. STD. 4" DIA. M.H.
RIM ELEV. 563.80-563.94

CAUTION EXISTING UTILITIES !!!
EXISTING UTILITIES AND UNDERGROUND FACILITIES INDICATED ON THESE PLANS HAVE BEEN LOCATED FROM REFERENCE INFORMATION. IT SHALL BE THE RESPONSIBILITY OF THE CONTRACTOR TO VERIFY BOTH HORIZONTALLY AND VERTICALLY THE LOCATION OF ALL EXISTING UTILITIES AND UNDERGROUND FACILITIES PRIOR TO CONSTRUCTION. TO TAKE THE NECESSARY PRECAUTIONS IN ORDER TO PROTECT ALL FACILITIES ENCOUNTERED. THE CONTRACTOR SHALL PRESERVE AND PROTECT ALL EXISTING UTILITIES FROM DAMAGE DURING CONSTRUCTION.



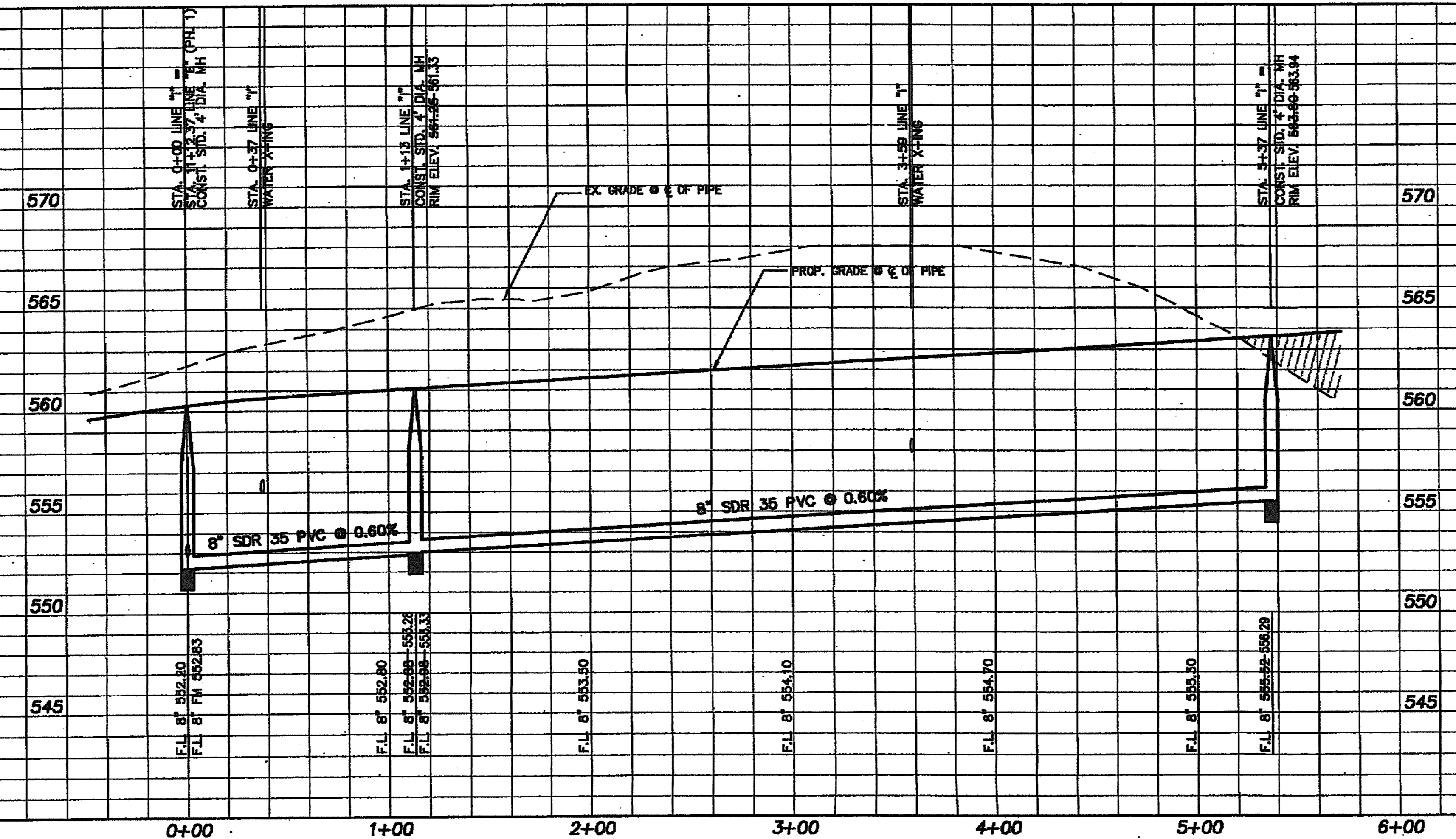
RECORD DRAWINGS

NOTE:
THESE PLANS HAVE BEEN REVISED TO CONFORM WITH CONSTRUCTION RECORDS PROVIDED TO SPIARS ENGINEERING, INC. BY CONTRACTOR AND CITY STAFF AFTER AS-BUILTS WERE ORIGINALLY SUBMITTED TO THE CITY OF ROCKWALL BY OTHERS. MODIFICATIONS TO PAVING, PAD AND UTILITY ELEVATIONS, AS REFLECTED ON THESE PLANS, WERE VERIFIED BY FIELD SURVEY PERFORMED IN DECEMBER, 2008.

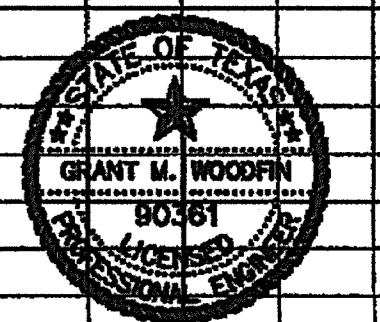
BENCH MARK: #1
BRASS CAP IN CL. OF MEDIAN NORTH ON LAKESHORE DRIVE NORTH OF THE INTERSECTION OF NORTH ALAMO AND LAKESHORE DRIVE.
ELEV. 524.78

BENCH MARK: #2
BRASS CAP IN CL. OF MEDIAN ON LAKESHORE DRIVE BETWEEN TO STREETS, STONEBROOK AND AMESBURY BEING NORTH OF HAVEN HILL.
ELEV. 518.83

LINE "I"



"AS BUILTS"
Information shown on these plans was furnished by the Contractor. All responsibility for the accuracy belongs to the Contractor.



The Seal Appearing On This Document Was Authenticated By
Grant M. Woodruff
90361, Exp. 11/22/09

SANITARY SEWER PLAN/PROFILE
HIGHLAND DRIVE
THE PRESERVE - PHASE 3
CITY OF ROCKWALL, TEXAS
C&P Engineering, LTD.
Engineering • Planning • Surveying

1801 GATEWAY BLVD. - SUITE 101
RICHARDSON, TEXAS 75080
email: info@c-pengineering.com

(972) 644-2800 OFC (972) 644-2817 FAX
DRAWN BY: DATE: SCALE: JOB NUMBER: SHEET: 05110-SSB
C&P 12/05 1"=40'-H 1"=4'-V 05110 36 OF