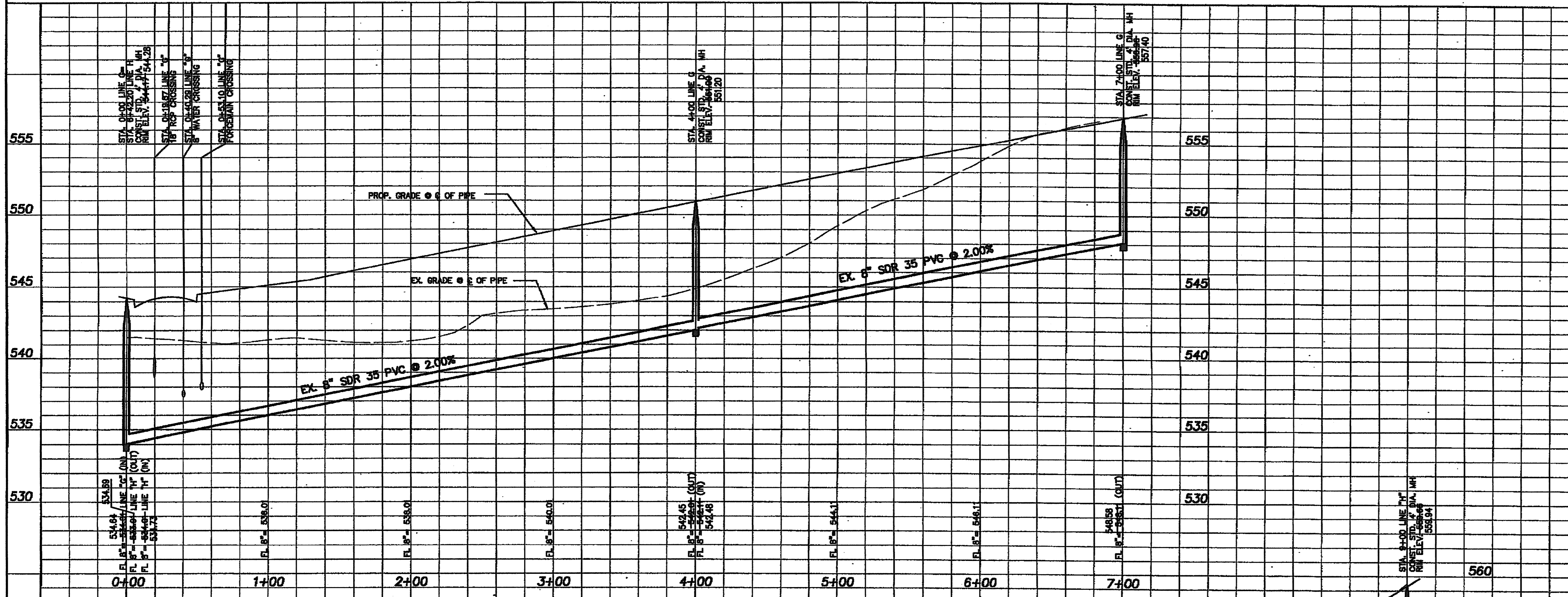
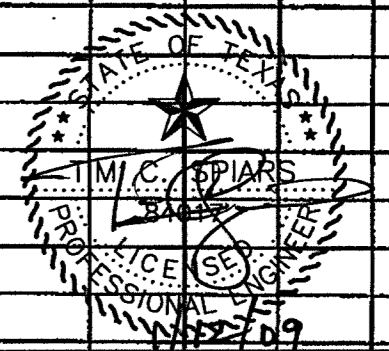
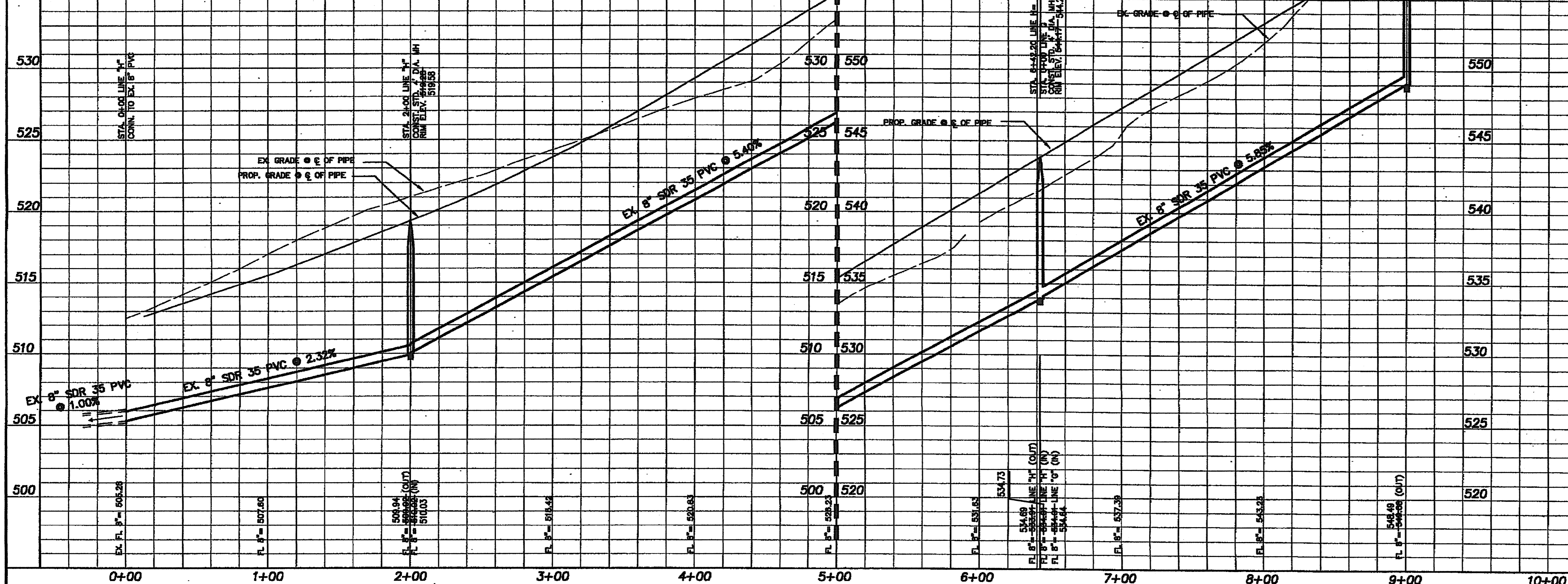


LINE "G"



LINE "H"



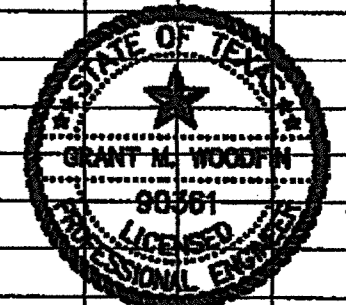
RECORD DRAWINGS

NOTE: THESE PLANS HAVE BEEN REVISED TO CONFORM WITH CONSTRUCTION RECORDS PROVIDED TO S.M.H.S. ENGINEERING, INC. BY CONTRACTOR AND CITY STAFF AFTER AS-BUILTS WERE ORIGINALLY SUBMITTED TO THE CITY OF ROCKWALL. ALL OTHERS, MODIFICATIONS TO PAVING, PAD AND UTILITY ELEVATIONS AS REFLECTED ON THESE PLANS, WERE VERIFIED BY FIELD SURVEY PERFORMED IN DECEMBER, 2008.

BENCH MARK: #1
BRASS CAP IN CL. OF MEDIAN NORTH ON LAKESHORE DRIVE NORTH OF THE INTERSECTION OF NORTH ALAMO AND LAKESHORE DRIVE.
ELEV. 524.78

BENCH MARK: #2
BRASS CAP IN CL. OF MEDIAN ON LAKESHORE DRIVE BETWEEN STREETS, STONEBROOK AND AMESBURY DRING NORTH OF HAVEN HILL.
ELEV. 518.83

"AS BUILTS"
Information shown on these plans was furnished by the Contractor. All responsibility for the accuracy belongs to the Contractor.



The Seal Appearing On This Document Was Authorized By
Travis C. Copias
982709
4.5.07

SANITARY SEWER PROFILES
THE PRESERVE - PHASE 3
CITY OF ROCKWALL, TEXAS
C&P Engineering, LTD.
Engineering • Planning • Surveying
1801 GATEWAY BLVD. - SUITE 101
RICHARDSON, TEXAS 75080
email: info@c-pengineering.com