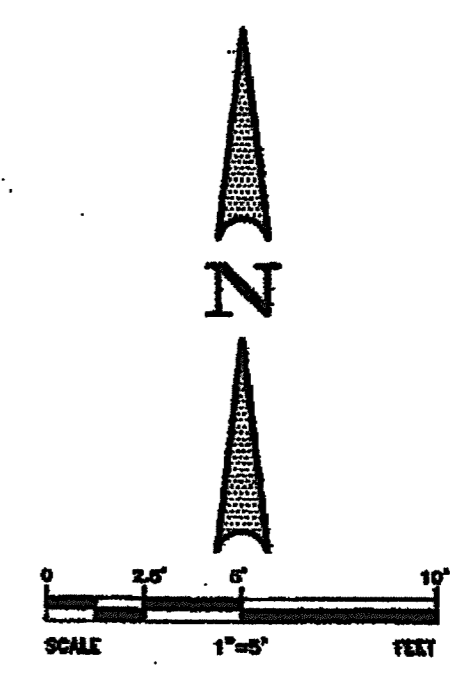
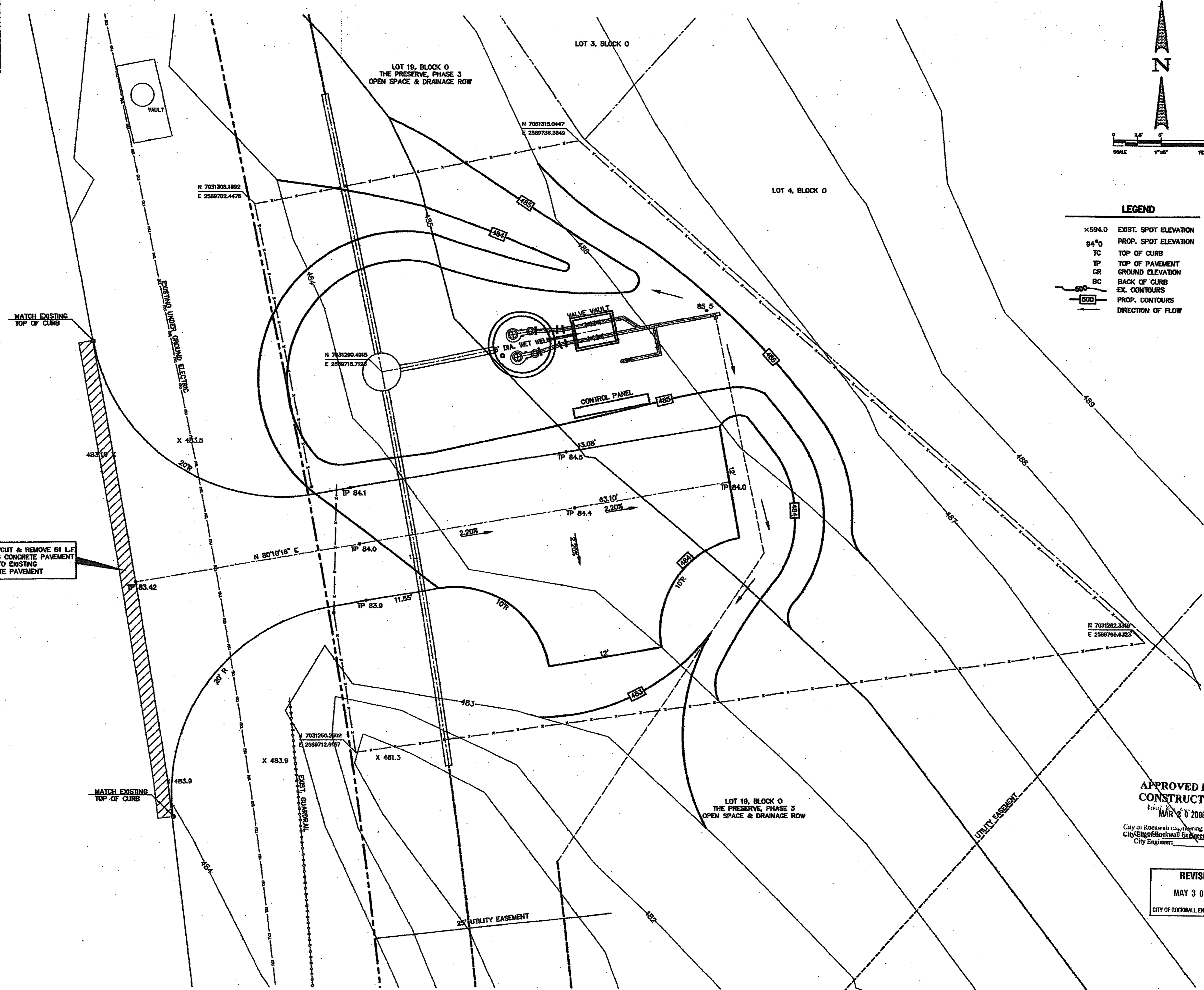


BENCHMARK:
CITY OF ROCKWALL CONTROL MONUMENT #R010 @ OF
N. LAKESHORE DRIVE NORTH OF N. ALAMO IN MEDIAN
ELEV. 524.79 (NAVD88)

BENCHMARK:
CITY OF ROCKWALL CONTROL MONUMENT #R011 @ OF
N. LAKESHORE DR. NORTH OF N. HAVEN HILL CT. IN MEDIAN
ELEV. 518.83 (NAVD88)

NORTH LAKE SHORE DRIVE
(100' ROW)

18" SAWOUT & REMOVE 61 LF
EXISTING CONCRETE PAVEMENT
DOWEL TO EXISTING
CONCRETE PAVEMENT



LEGEND

- x594.0 EXIST. SPOT ELEVATION
- 84.0 PROP. SPOT ELEVATION
- TC TOP OF CURB
- TP TOP OF PAVEMENT
- GR GROUND ELEVATION
- BC BACK OF CURB
- EX. CONTOURS
- PROP. CONTOURS
- DIRECTION OF FLOW

NO.	DATE	REVISION	APPROV.

Winkelmann & Associates, Inc.
CONSULTING CIVIL ENGINEERS & SURVEYORS
2500 W. HICKORY STREET, SUITE 100
DALLAS, TEXAS 75201
(972) 982-2200 FAX

THESE CONSTRUCTION PLANS WERE PREPARED
UNDER THE RESPONSIBLE SUPERVISION OF
MD. NAJIB UDDIN KHAN, REGISTERED PROFESSIONAL
ENGINEER NO. 87776

THE SEAL APPEARING ON THIS
DOCUMENT WAS AUTHORIZED BY
MD. NAJIB UDDIN KHAN, # 87776

A. HANNA SURVEY, ABSTRACT NO. 98
J.M.B. JONES SURVEY, ABSTRACT NO. 124
CITY OF ROCKWALL, ROCKWALL COUNTY, TEXAS

BLAND ENERGY INC.
8160 N. CENTRAL EXPRESSWAY, SUITE 400
DALLAS, TEXAS 75205
214-355-0081

APPROVED FOR CONSTRUCTION
MAR 0 2006
City of Rockwall Engineering Dept.
City Engineer

REVISION
MAY 3 0 2007
CITY OF ROCKWALL ENGINEERING DEPT.

**THE PRESERVE LIFT STATION
GRADING PLAN**

Scale: 1"=5'

Designed By: MS
Drawn By: MS
Checked By: NK
File: 406023LIFT2.dwg View:
Project No.: 40602.01