


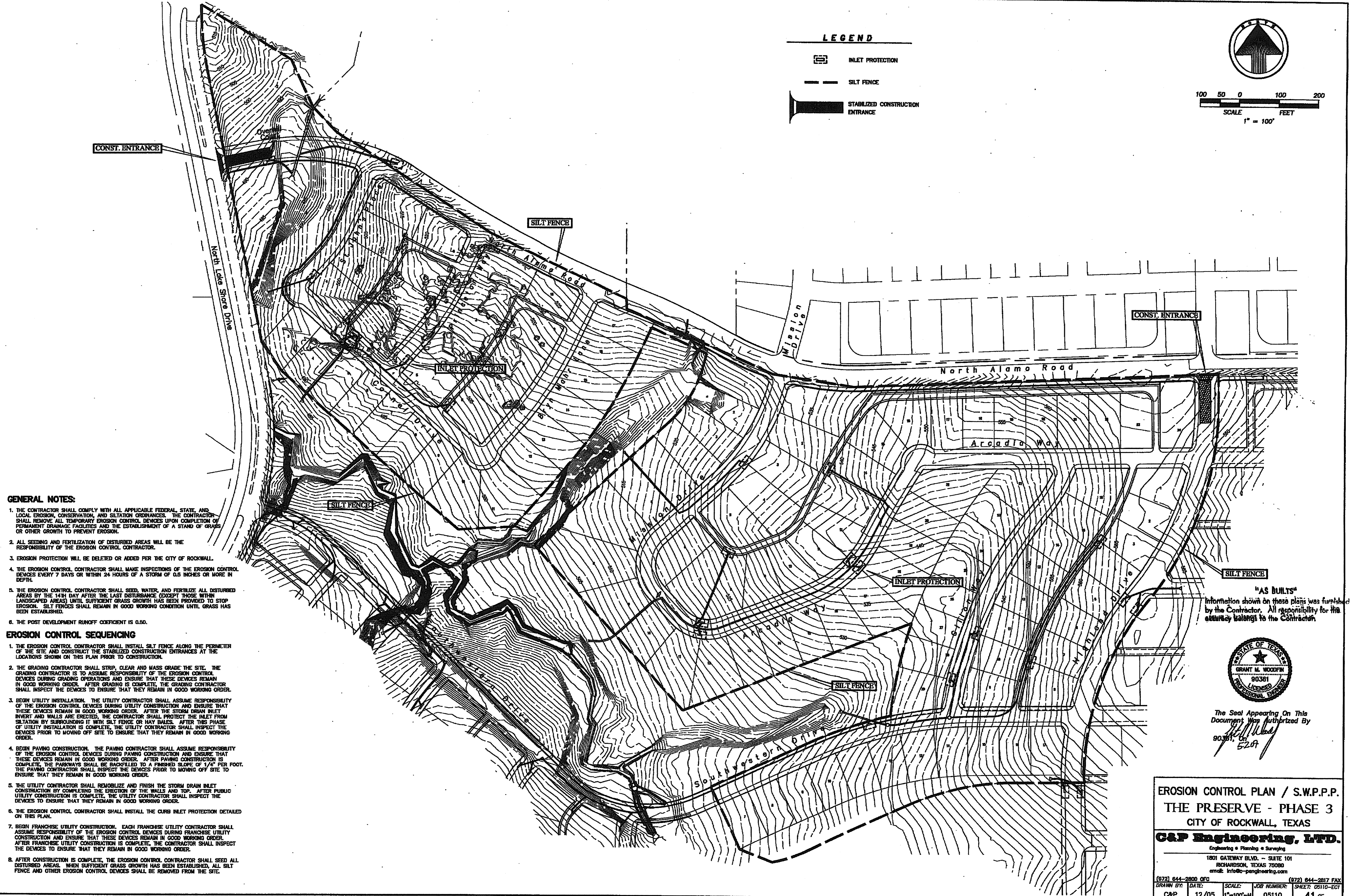


LEGEND

-  INLET PROTECTION
-  SILT FENCE
-  STABILIZED CONSTRUCTION ENTRANCE



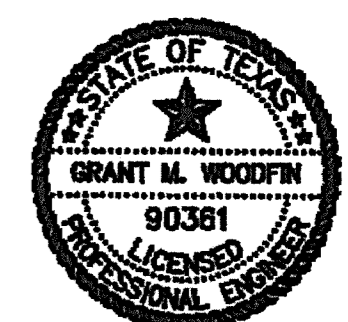
GENERAL NOTES:

1. THE CONTRACTOR SHALL COMPLY WITH ALL APPLICABLE FEDERAL, STATE, AND LOCAL EROSION, CONSERVATION, AND SILTATION ORDINANCES. THE CONTRACTOR SHALL REMOVE ALL TEMPORARY EROSION CONTROL DEVICES UPON COMPLETION OF PERMANENT DRAINAGE FACILITIES AND THE ESTABLISHMENT OF A STAND OF GRASS OR OTHER GROWTH TO PREVENT EROSION.
2. ALL SEEDING AND FERTILIZATION OF DISTURBED AREAS WILL BE THE RESPONSIBILITY OF THE EROSION CONTROL CONTRACTOR.
3. EROSION PROTECTION WILL BE DELETED OR ADDED PER THE CITY OF ROCKWALL.
4. THE EROSION CONTROL CONTRACTOR SHALL MAKE INSPECTIONS OF THE EROSION CONTROL DEVICES EVERY 7 DAYS OR WITHIN 24 HOURS OF A STORM OF 0.5 INCHES OR MORE IN DEPTH.
5. THE EROSION CONTROL CONTRACTOR SHALL SEED, WATER, AND FERTILIZE ALL DISTURBED AREAS BY THE 14TH DAY AFTER THE LAST DISTURBANCE (EXCEPT THOSE WITHIN LANDSCAPED AREAS) UNTIL SUFFICIENT GRASS GROWTH HAS BEEN PROVIDED TO STOP EROSION. SILT FENCES SHALL REMAIN IN GOOD WORKING CONDITION UNTIL GRASS HAS BEEN ESTABLISHED.
6. THE POST DEVELOPMENT RUNOFF COEFFICIENT IS 0.50.

EROSION CONTROL SEQUENCING

1. THE EROSION CONTROL CONTRACTOR SHALL INSTALL SILT FENCE ALONG THE PERIMETER OF THE SITE AND CONSTRUCT THE STABILIZED CONSTRUCTION ENTRANCES AT THE LOCATIONS SHOWN ON THIS PLAN PRIOR TO CONSTRUCTION.
2. THE GRADING CONTRACTOR SHALL STRIP, CLEAR AND MASS GRADE THE SITE. THE GRADING CONTRACTOR IS TO ASSUME RESPONSIBILITY OF THE EROSION CONTROL DEVICES DURING GRADING OPERATIONS AND ENSURE THAT THESE DEVICES REMAIN IN GOOD WORKING ORDER. AFTER GRADING IS COMPLETE, THE GRADING CONTRACTOR SHALL INSPECT THE DEVICES TO ENSURE THAT THEY REMAIN IN GOOD WORKING ORDER.
3. BEGIN UTILITY INSTALLATION. THE UTILITY CONTRACTOR SHALL ASSUME RESPONSIBILITY OF THE EROSION CONTROL DEVICES DURING UTILITY CONSTRUCTION AND ENSURE THAT THESE DEVICES REMAIN IN GOOD WORKING ORDER. AFTER THE STORM DRAIN INLET INVERT AND WALLS ARE ERECTED, THE CONTRACTOR SHALL PROTECT THE INLET FROM SILTATION BY SURROUNDING IT WITH SILT FENCE OR HAY BALES. AFTER THIS PHASE OF UTILITY INSTALLATION IS COMPLETE, THE UTILITY CONTRACTOR SHALL INSPECT THE DEVICES PRIOR TO MOVING OFF SITE TO ENSURE THAT THEY REMAIN IN GOOD WORKING ORDER.
4. BEGIN PAVING CONSTRUCTION. THE PAVING CONTRACTOR SHALL ASSUME RESPONSIBILITY OF THE EROSION CONTROL DEVICES DURING PAVING CONSTRUCTION AND ENSURE THAT THESE DEVICES REMAIN IN GOOD WORKING ORDER. AFTER PAVING CONSTRUCTION IS COMPLETE, THE PARKWAYS SHALL BE BACKFILLED TO A FINISHED SLOPE OF 1/4" PER FOOT. THE PAVING CONTRACTOR SHALL INSPECT THE DEVICES PRIOR TO MOVING OFF SITE TO ENSURE THAT THEY REMAIN IN GOOD WORKING ORDER.
5. THE UTILITY CONTRACTOR SHALL REMOBLIZE AND FINISH THE STORM DRAIN INLET CONSTRUCTION BY COMPLETING THE ERECTION OF THE WALLS AND TOP. AFTER PUBLIC UTILITY CONSTRUCTION IS COMPLETE, THE UTILITY CONTRACTOR SHALL INSPECT THE DEVICES TO ENSURE THAT THEY REMAIN IN GOOD WORKING ORDER.
6. THE EROSION CONTROL CONTRACTOR SHALL INSTALL THE CURB INLET PROTECTION DETAILED ON THIS PLAN.
7. BEGIN FRANCHISE UTILITY CONSTRUCTION. EACH FRANCHISE UTILITY CONTRACTOR SHALL ASSUME RESPONSIBILITY OF THE EROSION CONTROL DEVICES DURING FRANCHISE UTILITY CONSTRUCTION AND ENSURE THAT THESE DEVICES REMAIN IN GOOD WORKING ORDER. AFTER FRANCHISE UTILITY CONSTRUCTION IS COMPLETE, THE CONTRACTOR SHALL INSPECT THE DEVICES TO ENSURE THAT THEY REMAIN IN GOOD WORKING ORDER.
8. AFTER CONSTRUCTION IS COMPLETE, THE EROSION CONTROL CONTRACTOR SHALL SEED ALL DISTURBED AREAS. WHEN SUFFICIENT GRASS GROWTH HAS BEEN ESTABLISHED, ALL SILT FENCE AND OTHER EROSION CONTROL DEVICES SHALL BE REMOVED FROM THE SITE.

"AS BUILT"
Information shown on these plans was furnished by the Contractor. All responsibility for this accuracy belongs to the Contractor.



The Seal Appearing On This Document Was Authorized By
Grant M. Woodfin
90381, 5/2/01

EROSION CONTROL PLAN / S.W.P.P.P.
THE PRESERVE - PHASE 3
CITY OF ROCKWALL, TEXAS

C&P Engineering, L.P.D.
Engineering • Planning • Surveying

1801 GATEWAY BLVD. - SUITE 101
RICHARDSON, TEXAS 75080
email: info@c-pengineering.com

(972) 844-2800 OFC (972) 844-2817 FAX
DRAWN BY: C&P DATE: 12/05 SCALE: 1"=100'-H JOB NUMBER: 05110 SHEET: 05110-EC1
41 of