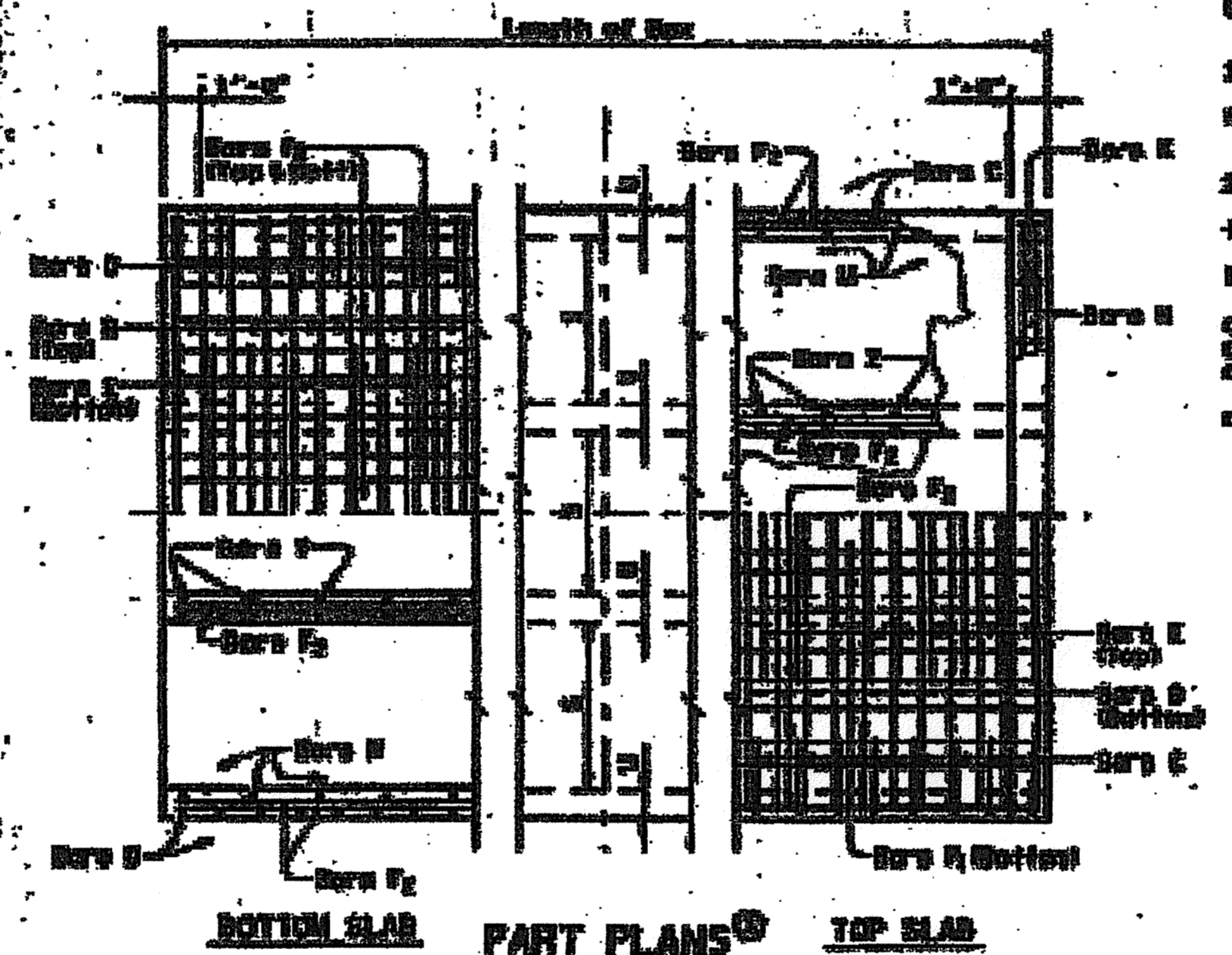
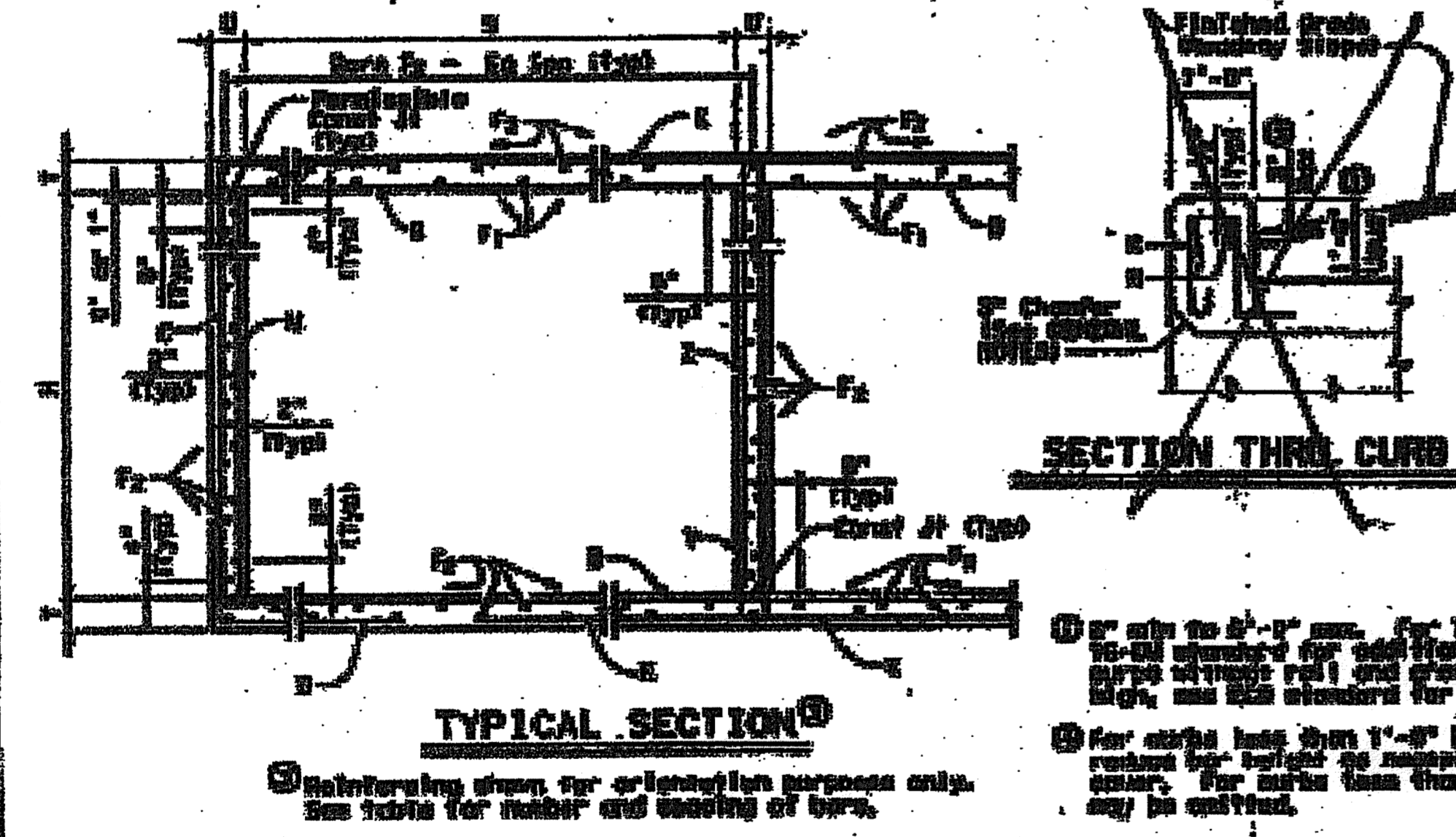
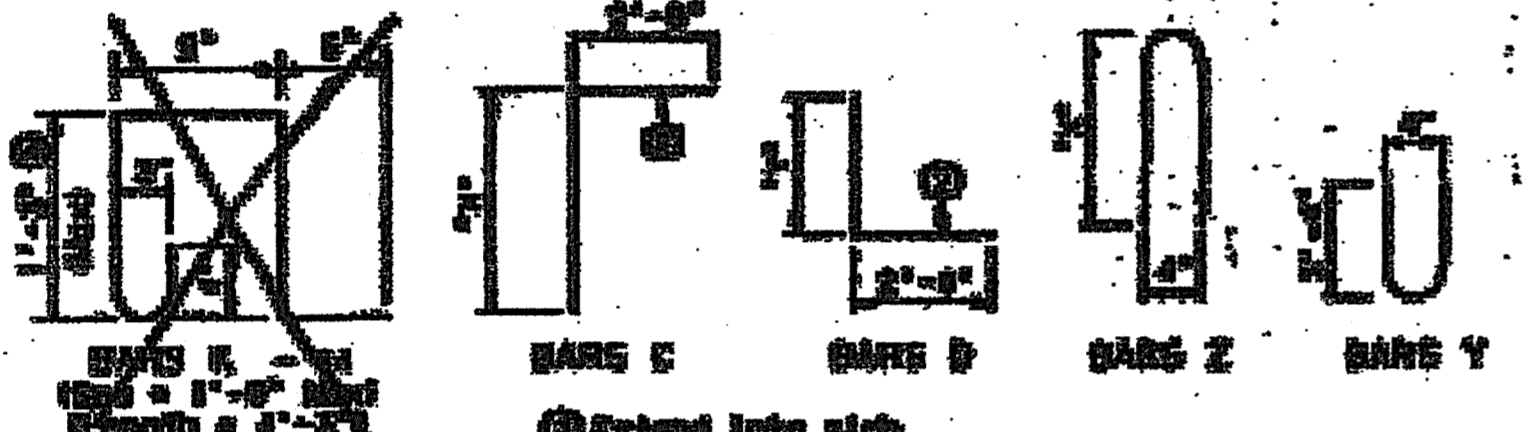


SECTION DIMENSIONS	BILLS OF REINFORCING STEEL (For Box Length = 40 feet)																								QUANTITIES						
	Bare B				Bare C & D				Bare E				Bare F - #4				Bare G - #4 of 1'-6" Max				Bare H - #4 of 1'-6" Max				Per foot of Barrel		Curb	Total			
No.	H	T	W	No.	Length	Wt	No.	Length	Wt	No.	Length	Wt	No.	Length	Wt	No.	Length	Wt	No.	Length	Wt	No.	Length	Wt	Bar	Wt	Bar	Wt	Bar	Wt	
1	40	10	10																												
2	40	10	10																												

Bar	Quantity
#4	100
#5	50
#6	20
#7	10
#8	5



GENERAL NOTES:

- Designed according to current AASHTO Standard and Texas Dept. of Transportation.
- All reinforcing steel shall be grade 60.
- All concrete shall be 4000 psi concrete with a minimum 28 day compressive strength of 3500 psi.
- The bottom edge of the top slab shall be finished 2" at the curbs.
- Reinforcing bars shall be adjusted to provide a minimum of 1" clear cover.
- Concrete shall be placed at the time that may be placed a maximum of 6" at the contractor's option. If this option is used, Bars H may be cut off or reduced, Bars C and E may be increased, and Bars Y and Z may be removed. See standard NC-7-20 for standard curb, angle sections and lengthening details.

1500 LBS/YS

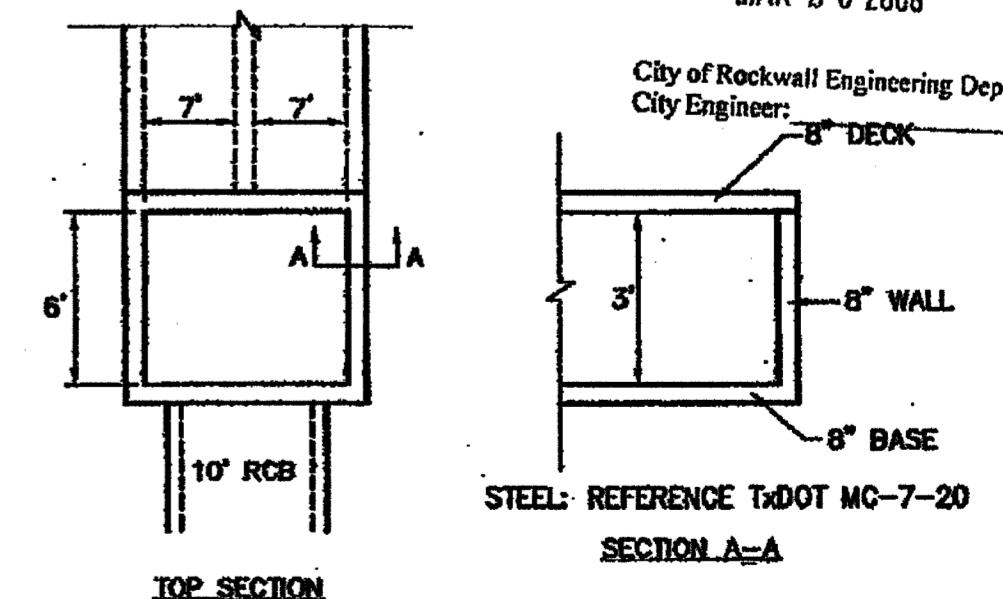
Texas Department of Transportation
 State Office

MULTIPLE BOX CULVERTS
 7'-0" SPAN
 20' MAX FILL
 (SMALL NOT BE USED FOR DIRECT TRAFFIC)

NC-7-20

REVISION
 MAY 3 0 2007
 CITY OF ROCKWALL ENGINEERING DEPT.

APPROVED FOR
 CONSTRUCTION
 MAR 2 0 2006



THESE CONSTRUCTION PLANS WERE PREPARED BY THE ENGINEER OR ARCHITECT AND ARE NOT TO BE USED FOR ANY OTHER PROJECT WITHOUT THE WRITTEN CONSENT OF THE ENGINEER OR ARCHITECT.
 M.D. MAIN UDDIN KHAN, REGISTERED PROFESSIONAL ENGINEER NO. 87778.

3/15/06



M.B. JONES SURVEY, ABSTRACT NO. 122
 CITY OF ROCKWALL
 ROCKWALL COUNTY, TEXAS
 LUMBERMEN'S INVESTMENT CORPORATION
 5485 BELLEVUE ROAD #225
 DALLAS, TEXAS 75240

Winkelmann & Associates, Inc.
 CONSULTING CIVIL ENGINEER & SURVEYOR
 6710 VALLEY VIEW ROAD
 DALLAS, TEXAS 75230
 (214) 467-7800 FAX

Scale: 1/4" = 1'-0"	Date: 103/22/05
Designed By: MB	City of Rockwall Engineering Dept. City Engineer
Drawn By: MB	8" DECK
Checked By: MK	8" WALL
File: 406021.mxd	8" BASE
Project No.: 406021	

SHEET
34B
 OF
 46

TRANSITION STRUCTURE DETAIL