

BENCHMARK:
CITY OF ROCKWALL CONTROL MONUMENT #R010 & OF
N. LAKESHORE DRIVE NORTH OF N. ALAMO IN MEDIAN
ELEV. 524.79 (NAVD88)

BENCHMARK:
CITY OF ROCKWALL CONTROL MONUMENT #R011 & OF
N. LAKESHORE DR. NORTH OF N. HAVEN HILL CT. IN MEDIAN
ELEV. 518.83 (NAVD88)

STA 33+49.88 (1.62' LT)
NORTH ALAMO ROAD=
STA. 1+88.70 LINE "1"
INSTALL 1-30" BEND
CONSTRUCT 1" TRANSITION
STRUCTURE AS PER DETAIL
ON SHEET NO. 34B OF 46

STA 33+77.53 (14.49' RT)
NORTH ALAMO ROAD=
STA. 2+20.71 LINE "1"
REMOVE EXIST. WINGWALLS
CONNECT TO EX. 10'X3' RCB
FL. 490.00

STA 33+35.38 (61.19' RT)
NORTH ALAMO ROAD=
STA. 1+80 LAT. "1-A"
CONST. 1-36" TYPE "B" HDWL
W/ 20 LF CONCRETE RIP-RAP
FL. 490.25

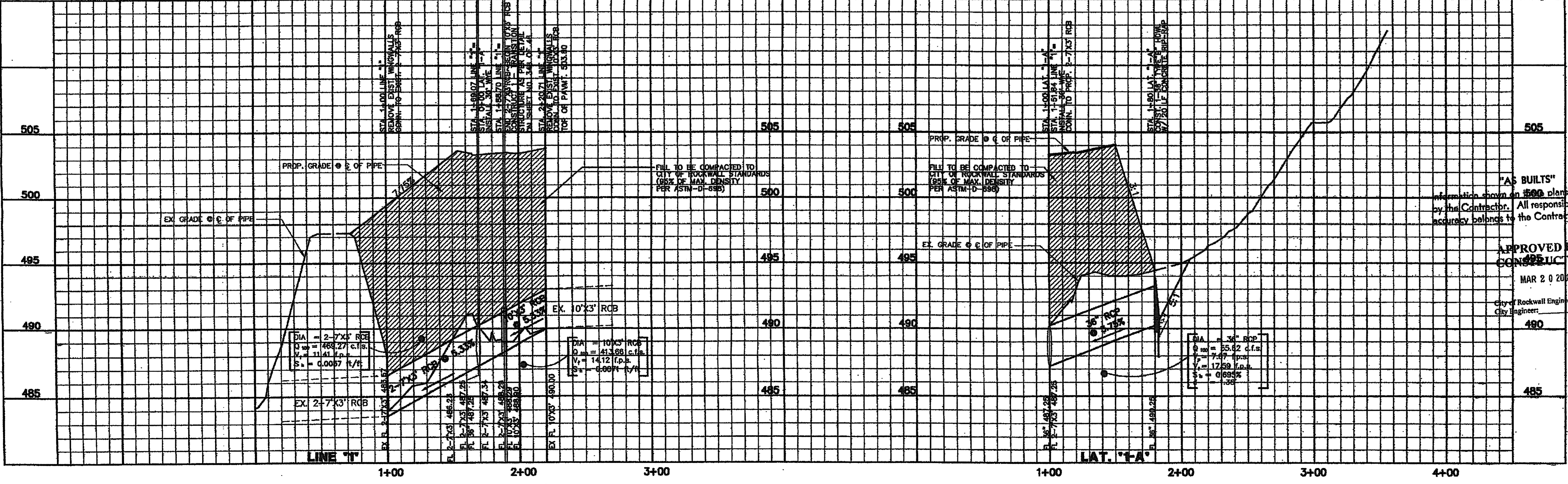
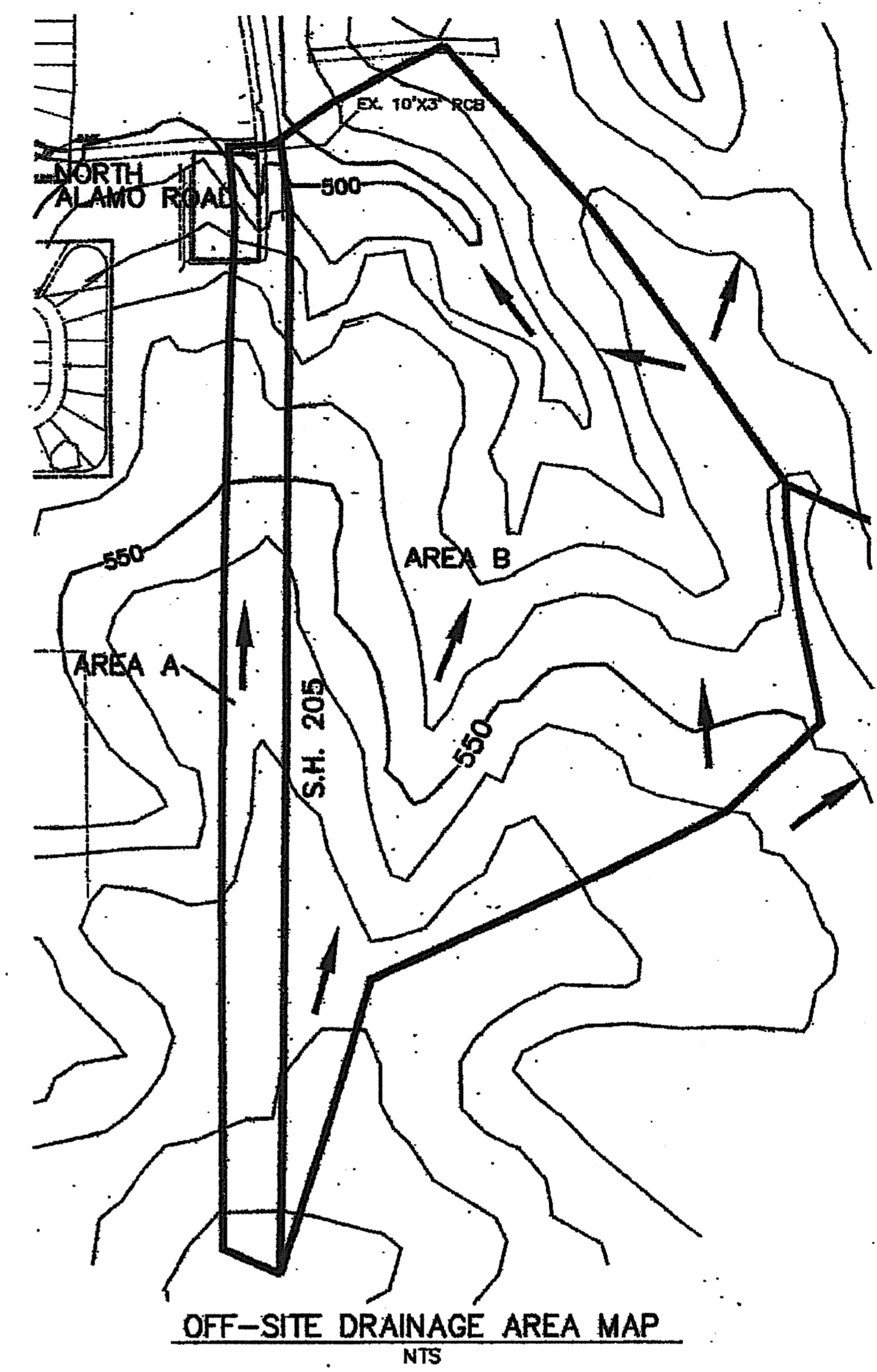
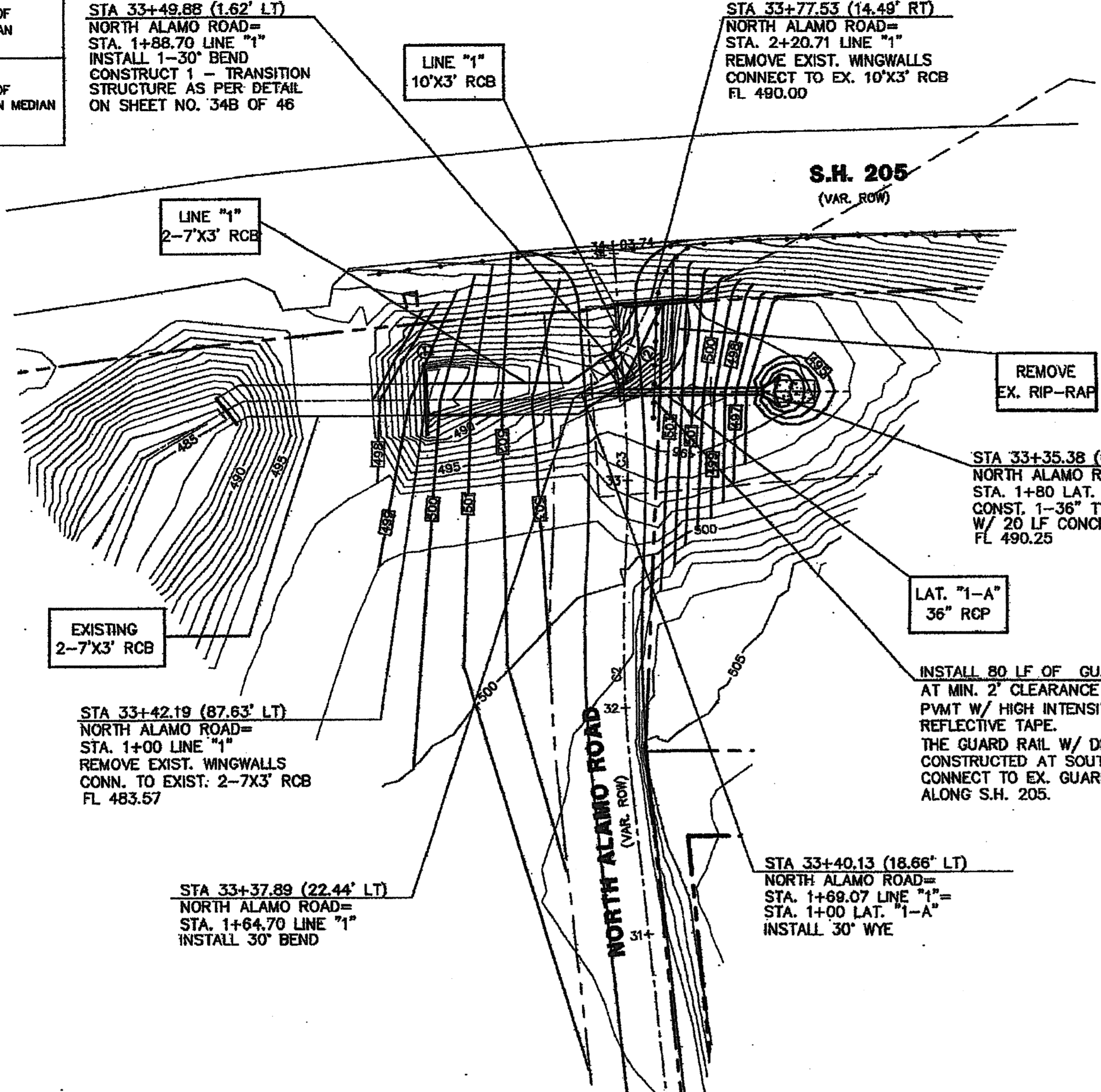
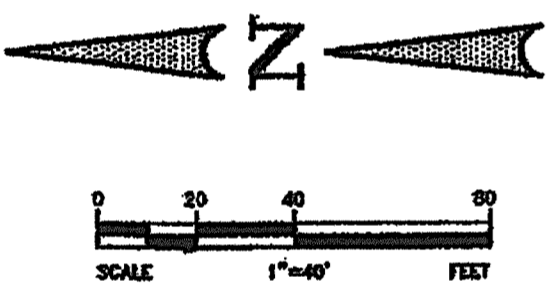
STA 33+42.19 (87.63' LT)
NORTH ALAMO ROAD=
STA. 1+00 LINE "1"
REMOVE EXIST. WINGWALLS
CONN. TO EXIST. 2-7'X3' RCB
FL. 483.57

STA 33+37.89 (22.44' LT)
NORTH ALAMO ROAD=
STA. 1+64.70 LINE "1"
INSTALL 30" BEND

STA 33+40.13 (18.66' LT)
NORTH ALAMO ROAD=
STA. 1+68.07 LINE "1"
STA. 1+00 LAT. "1-A"
INSTALL 30" WYE

Q₁₀₀ = CIA
C = 0.5
I = 9.8 in/hr
AREA 'A' = 11.35 ACRES
AREA 'A' = Q₁₀₀ = 55.82 cfs
AREA 'B' = 84.42 ACRES
AREA 'B' = Q₁₀₀ = 413.66

CONTRACTOR TO FIELD VERIFY EXACT
LOCATION & DEPTH OF EXISTING RCB PRIOR
TO CONSTRUCTION.



THESE CONSTRUCTION PLANS WERE PREPARED
UNDER THE RESPONSIBLE SUPERVISION OF
M.D. NAIM UDDIN KHAN, REGISTERED PROFESSIONAL
ENGINEER NO. 87776.

M.D. NAIM UDDIN KHAN P.E. #87776

THE SEAL APPEARING ON THIS
DOCUMENT WAS AUTHORIZED BY
M.D. NAIM UDDIN KHAN, P.E. #87776

M.B. JONES SURVEY, ABSTRACT NO. 122
CITY OF ROCKWALL
ROCKWALL COUNTY, TEXAS
LUMBERMEN'S INVESTMENT CORPORATION
5486 BELTLINE ROAD #225
DALLAS, TEXAS 75240

**NORTH ALAMO ROAD
STORM SEWER PLAN & PROFILE**

Information shown on 500 plans was furnished
by the Contractor. All responsibility for the
accuracy belongs to the Contractor.

APPROVED FOR
CONSTRUCTION
MAR 20 2006
City of Rockwall Engineering Dept.
City Engineer:

Scale: 1" = 40'
Date: 15-06
Designed By: MB
Drawn By: MB
Checked By: NK
File: 406023m.dwg | View:
Project No.: 40602.01

SHEET
34A
OF
46

Winkelmann & Associates, Inc.
CONSULTING CIVIL ENGINEERS & SURVEYORS
5700 INDEPENDENCE BLVD., SUITE 100
DALLAS, TEXAS 75249
(972) 492-7999
FAX (972) 492-7999

REVISION
NO. DATE

APPROVED