

SIDEWALK TO BE CONSTRUCTED BY PAVING CONTRACTOR ADJACENT TO DRAINAGE ROW / OPEN SPACE

CONTRACTOR: SEE SHEET 17 FOR DETAIL ON WARPING EYEBROW PAVT. TO INLET



### RECORD DRAWINGS

NOTE: THESE PLANS HAVE BEEN REVISED TO CONFORM WITH CONSTRUCTION RECORDS PROVIDED TO SPIARS ENGINEERING, INC. BY CONTRACTOR AND CITY STAFF AFTER AS-BUILTS WERE ORIGINALLY SUBMITTED TO THE CITY OF ROCKWALL BY OTHERS. MODIFICATIONS TO PAVING, PAD AND UTILITY ELEVATIONS, AS REFLECTED ON THESE PLANS, WERE VERIFIED BY FIELD SURVEY PERFORMED IN DECEMBER, 2008.

**BENCH MARK: #1**  
BRASS CAP IN CL. OF MEDIAN NORTH ON LAKESHORE DRIVE NORTH OF THE INTERSECTION OF NORTH ALAMO AND LAKESHORE DRIVE.

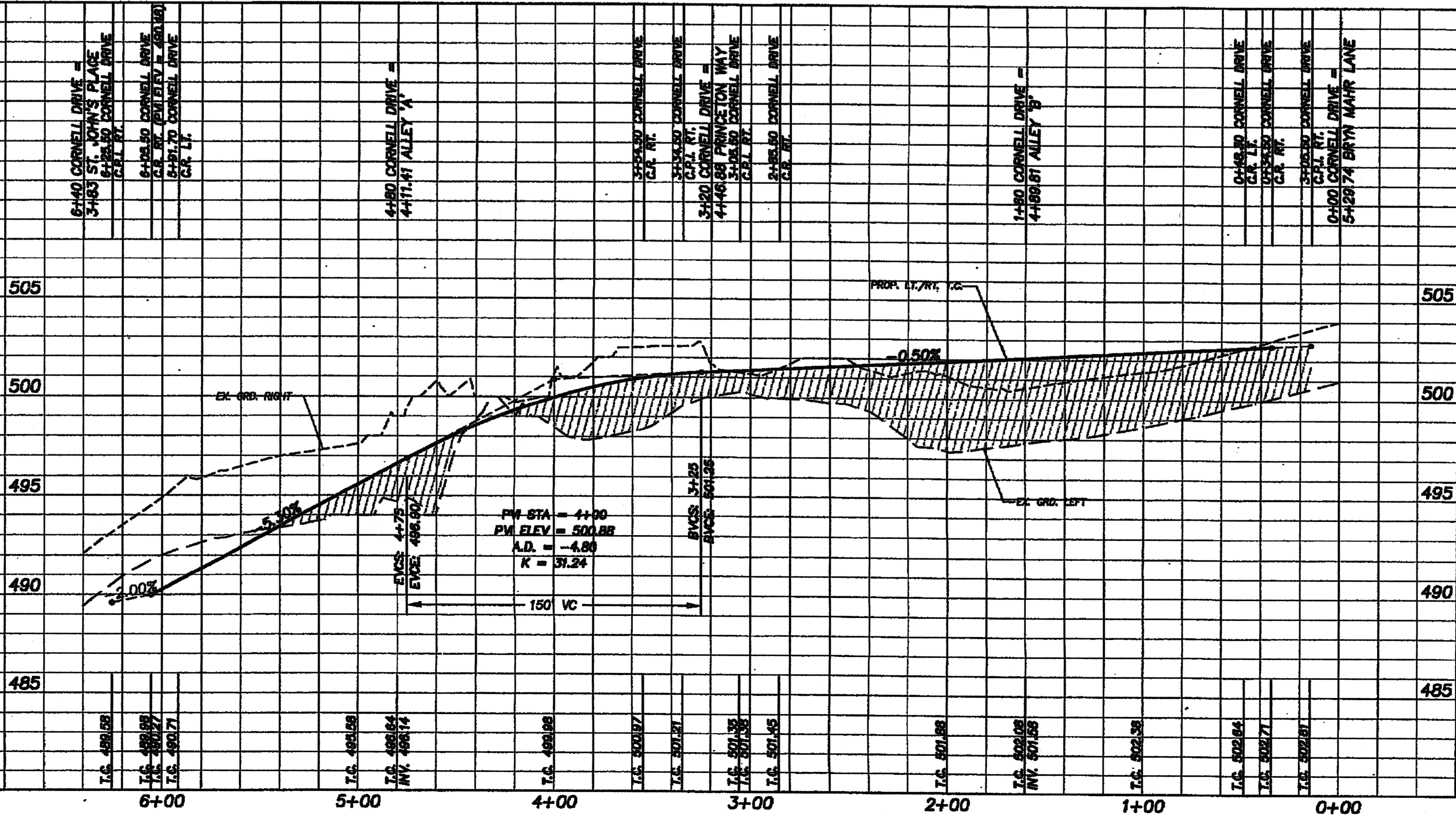
ELEV. 524.78

**BENCH MARK: #2**  
BRASS CAP IN CL. OF MEDIAN ON LAKESHORE DRIVE BETWEEN TO STREETS, STONEBROOK AND AMESBURY BEING NORTH OF HAVEN HILL

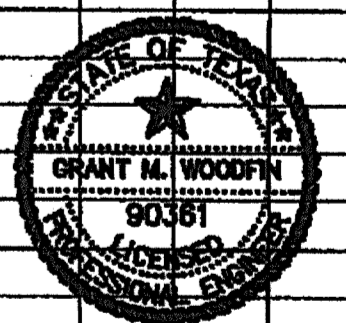
ELEV. 518.83

**CAUTION EXISTING UTILITIES !!!**  
EXISTING UTILITIES AND UNDERGROUND FACILITIES INDICATED ON THESE PLANS HAVE BEEN LOCATED FROM REFERENCE INFORMATION. IT SHALL BE THE RESPONSIBILITY OF THE CONTRACTOR TO VERIFY BOTH HORIZONTALLY AND VERTICALLY THE LOCATION OF ALL EXISTING UTILITIES AND UNDERGROUND FACILITIES PRIOR TO CONSTRUCTION, TO TAKE THE NECESSARY PRECAUTIONS IN ORDER TO PROTECT ALL FACILITIES ENCOUNTERED. THE CONTRACTOR SHALL PRESERVE AND PROTECT ALL EXISTING UTILITIES FROM DAMAGE DURING CONSTRUCTION.

### CORNELL DRIVE



**"AS BUILTS"**  
Information shown on these plans was furnished by the Contractor. All responsibility for the accuracy belongs to the Contractor.



The Seal Appearing On This Document Was Authorized By  
*Grant M. Woodfin*  
90381, TX  
12-09

PAVING PLAN & PROFILE  
CORNELL DRIVE  
THE PRESERVE - PHASE 3  
CITY OF ROCKWALL, TEXAS

**C&P Engineering, LTD.**  
Engineering • Planning • Surveying

1801 GATEWAY BLVD. - SUITE 101  
RICHARDSON, TEXAS 75080  
email: info@c-and-p-engineering.com

DRAWN BY: DATE: SCALE: JOB NUMBER: SHEET NO. OF TOTAL SHEETS  
C&P 12/05 1"=40'-H  
1"=4'-V 05110 18 of 18