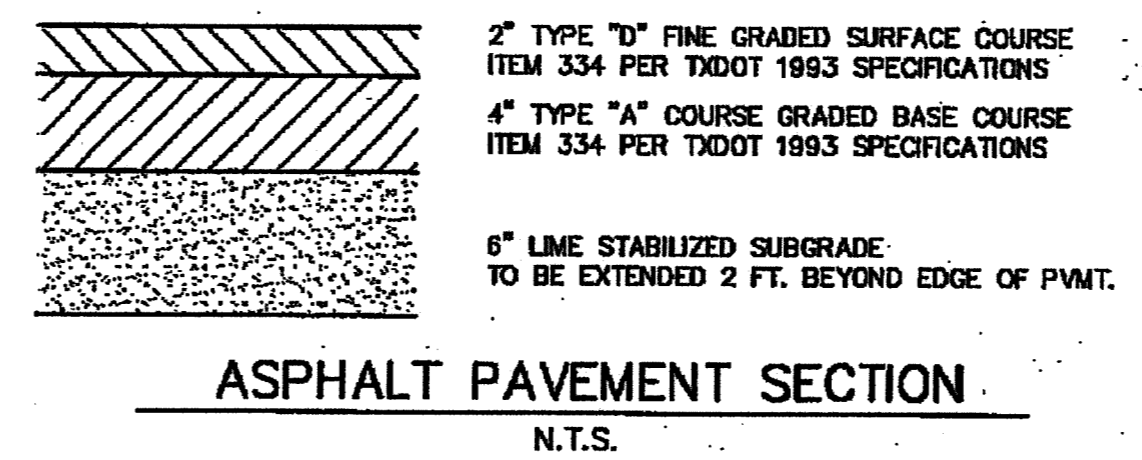
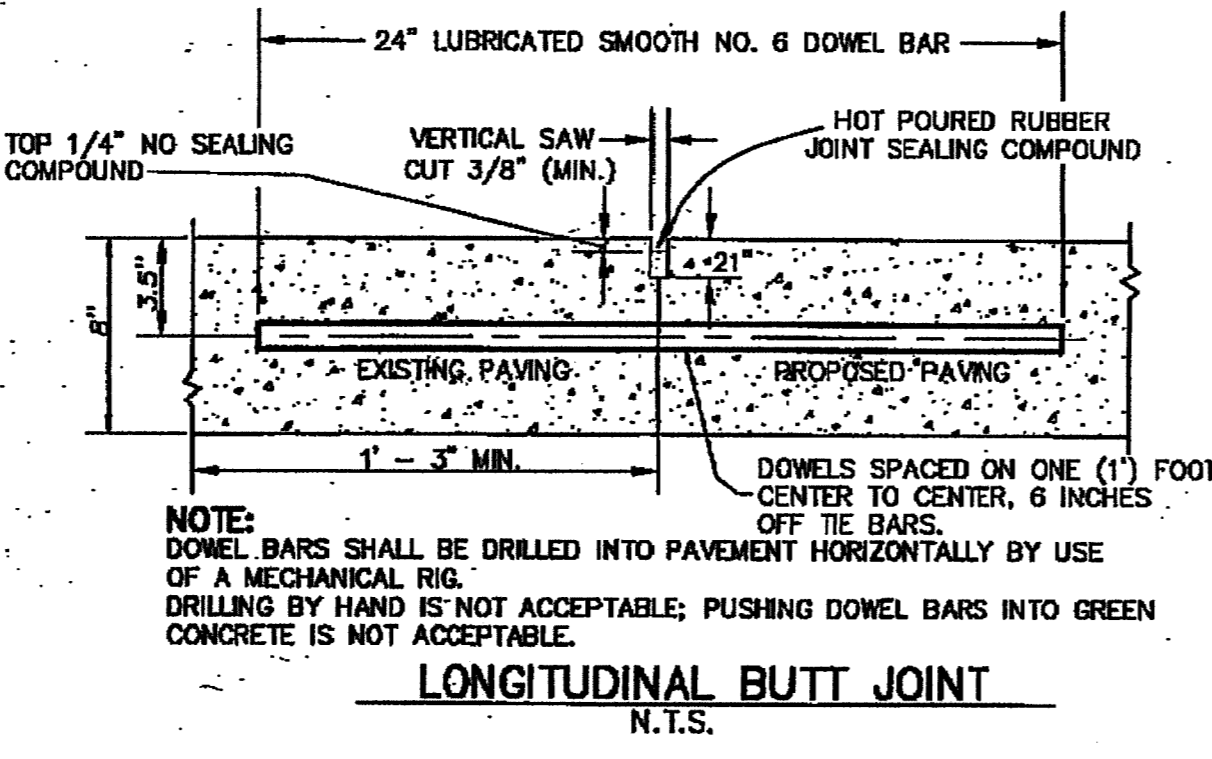


RECORD DRAWINGS

NOTE: THESE PLANS HAVE BEEN REVISED TO CONFORM WITH CONSTRUCTION RECORDS PROVIDED TO SPIARS ENGINEERING, INC. BY CONTRACTOR AND CITY STAFF AFTER AS-BUILTS WERE ORIGINALLY SUBMITTED TO THE CITY OF ROCKWALL BY OTHERS. MODIFICATIONS TO PAVING, PAD AND UTILITY ELEVATIONS, AS REFLECTED ON THESE PLANS, WERE VERIFIED BY FIELD SURVEY PERFORMED IN DECEMBER, 2008.

CURVE DATA				
CURVE	RADIUS	DELTA	LENGTH	CHORD BEARING
C1	300.00'	73°30'	39.33'	39.30' N87°26'13\"/>
C2	600.00'	97°22'	97.63'	97.52' S88°40'32\"/>
C3	600.00'	71°20'	75.59'	75.54' N82°43'43\"/>

- PAVING GENERAL NOTES**
1. Unless otherwise noted all materials and construction shall conform to the applicable specifications and standards of the City of Rockwall and The North Central Texas Council of Governments - "Standard Specifications for Public Works Construction," latest edition.
 2. All reinforcement shall be grade 60.
 3. All dimensions are to back of curb. See details for crown and curb geometry.
 4. Paving joints are to be constructed per City details.
 5. Hydrated lime shall be applied as slurry.
 6. Contractor will be responsible for field verifying the location of all existing utilities prior to his operations.
 7. Installation, maintenance and removal of any traffic safety devices for all construction in or contiguous to existing pavement will be at the expense of the contractor and will follow as a guide the "Manual of Uniform Traffic Control Devices," latest edition.

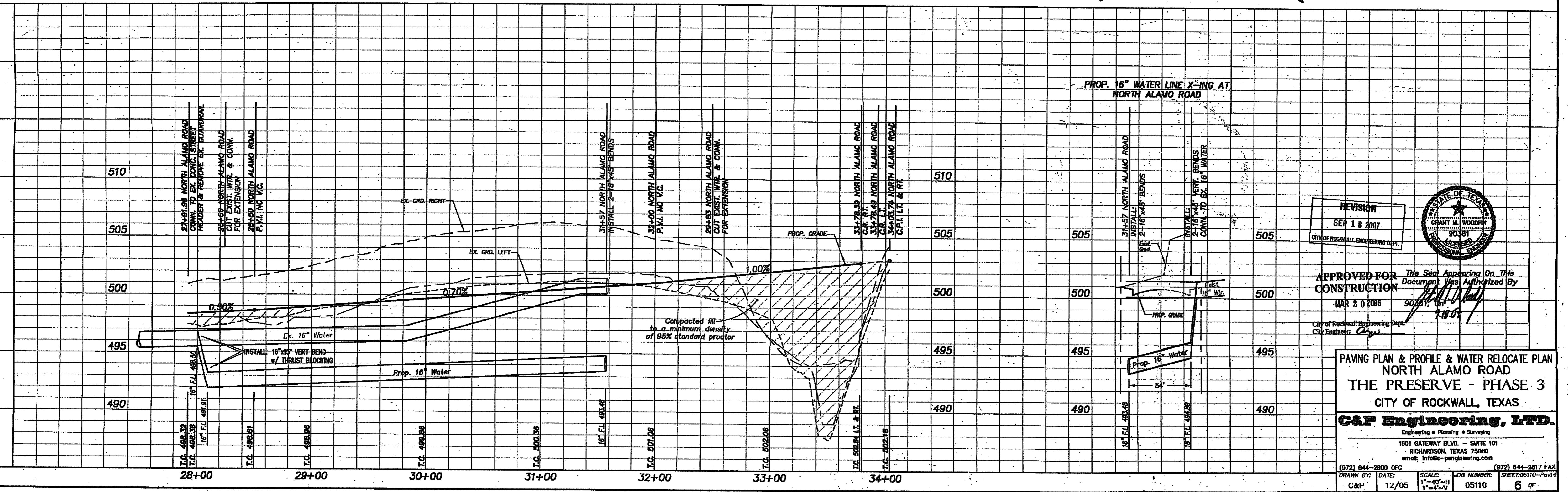


CAUTION EXISTING UTILITIES !!!

EXISTING UTILITIES AND UNDERGROUND FACILITIES INDICATED ON THESE PLANS HAVE BEEN LOCATED FROM REFERENCE INFORMATION. IT SHALL BE THE RESPONSIBILITY OF THE CONTRACTOR TO VERIFY BOTH HORIZONTALLY AND VERTICALLY THE LOCATION OF ALL EXISTING UTILITIES AND UNDERGROUND FACILITIES PRIOR TO CONSTRUCTION. TO TAKE THE NECESSARY PRECAUTIONS IN ORDER TO PROTECT ALL FACILITIES ENCOUNTERED. THE CONTRACTOR SHALL PRESERVE AND PROTECT ALL EXISTING UTILITIES FROM DAMAGE DURING CONSTRUCTION.

BENCH MARK #1
BRASS CAP IN C.L. OF MEDIAN NORTH ON LAKESHORE DRIVE NORTH OF THE INTERSECTION OF NORTH ALAMO AND LAKESHORE DRIVE.
ELEV. 524.78

BENCH MARK #2
BRASS CAP IN C.L. OF MEDIAN ON LAKESHORE DRIVE BETWEEN TO STREETS, STONEBROOK AND AMESBURY, BEING NORTH OF HAVEN HILL.
ELEV. 518.83



REVISION
SEP 18 2007
CITY OF ROCKWALL ENGINEERING DEPT.

APPROVED FOR CONSTRUCTION
MAR 8 0 2008
City Engineer: [Signature]

The Seal Appearing On This Document Was Authorized By
[Signature]
90361, 08
7-18-07

PAVING PLAN & PROFILE & WATER RELOCATE PLAN
NORTH ALAMO ROAD
THE PRESERVE - PHASE 3
CITY OF ROCKWALL, TEXAS

C&P Engineering, LTD.
Engineering • Planning • Surveys
1801 GATEWAY BLVD. - SUITE 101
ROCKWALL, TEXAS 75080
email: info@c-pengineering.com

(972) 644-2800 OFC
DRAWN BY: C&P
DATE: 12/05
SCALE: 1\"/>