

LAT. 'N-1'

LAT. 'N-2'

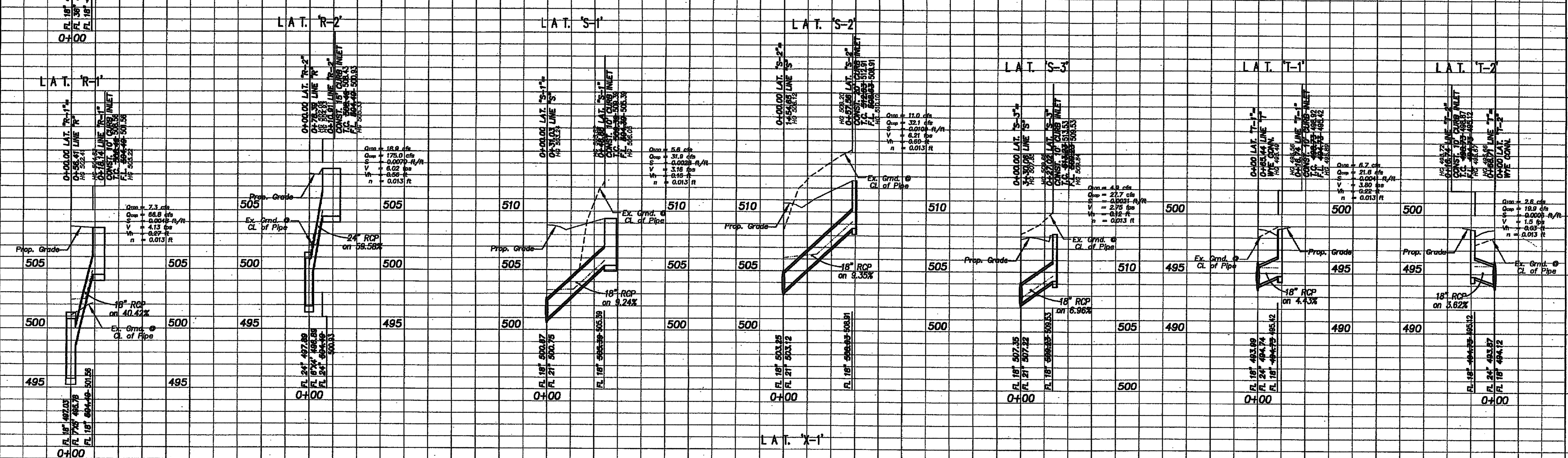
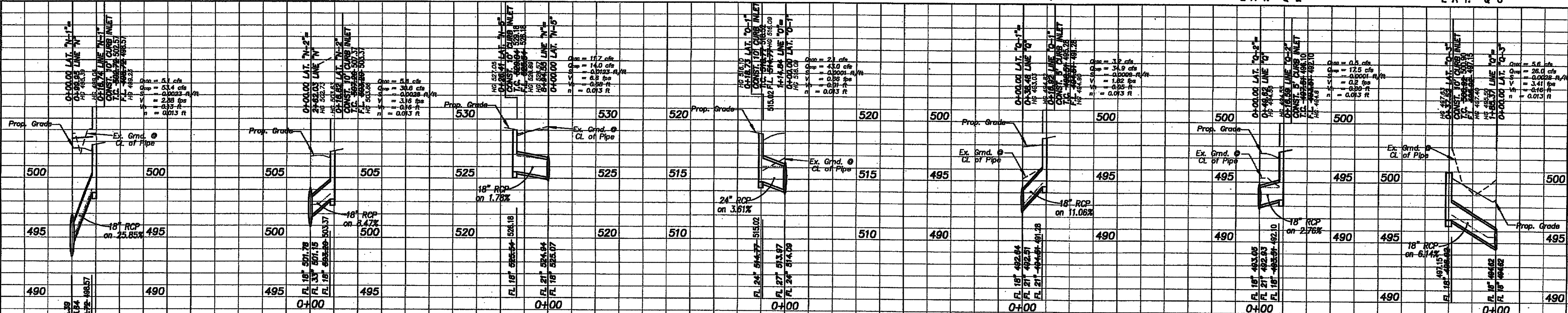
LAT. 'N-5'

LAT. 'O-1'

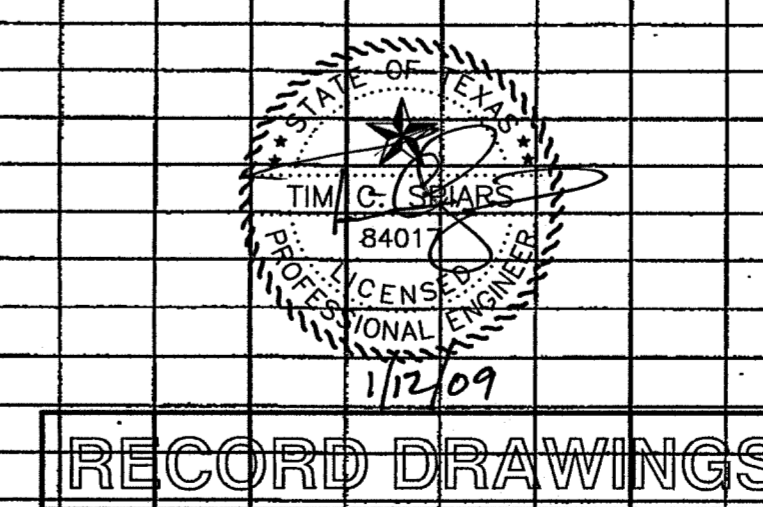
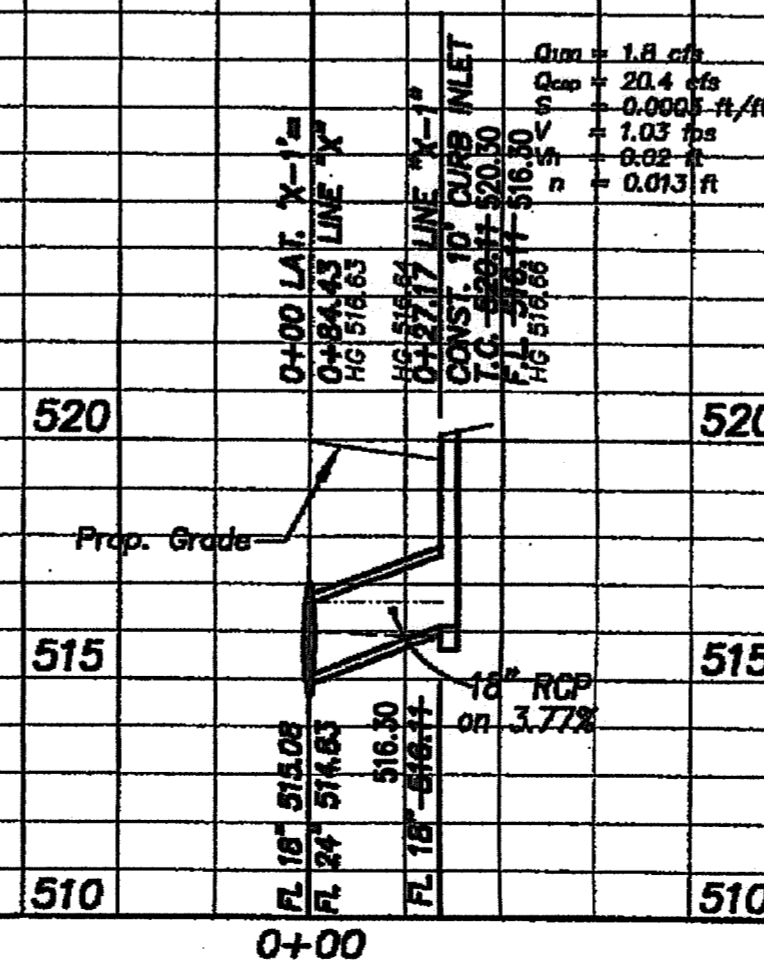
LAT. 'O-2'

LAT. 'O-2'

LAT. 'O-3'

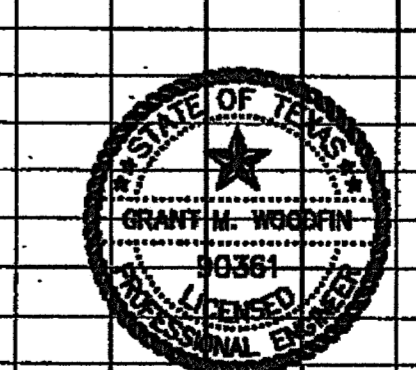


- DRAINAGE GENERAL NOTES**
1. Unless otherwise noted all materials and construction shall conform to the applicable specifications and standards of the City of Rockwall and the North Central Texas Council of Governments - "Standard Specifications for Public Works Construction", 3rd edition.
 2. All reinforcement shall be grade 60.
 3. Jetting of embedment and backfill will not be allowed as a method of compaction.
 4. Minimum compaction adjacent to and above storm sewers and drainage structures will be 95% with moisture 1% to 3% wet of optimum in all rights-of-way. Compaction in other areas will be 95%.
 5. Lifts will not exceed 6" and results will be obtained by Ramex, hand-tamping or as approved in writing by the City.
 6. Contractor will be responsible for field verifying the location of all existing utilities prior to his operations.
 7. All bends and connections other than those at junction boxes shall be prefabricated by the factory.
 8. All storm sewer pipes shall be ASTM C-76 RCP with tongue and groove connections (Class III or greater).



RECORD DRAWINGS

NOTE: THESE PLANS HAVE BEEN REVISED TO CONFORM WITH CONSTRUCTION RECORDS PROVIDED TO SPURS ENGINEERING INC. BY CONTRACTOR AND CITY STAFF AFTER AS-BUILTS WERE ORIGINALLY SUBMITTED TO THE CITY OF ROCKWALL BY OTHERS. MODIFICATIONS TO PAVING, PAD AND UTILITY ELEVATIONS, AS REFLECTED ON THESE PLANS, WERE MADE BY FIELD SURVEY PERFORMED IN DECEMBER, 2008.



The Seal Appearing On This Document Was Authorized By

[Signature]

"AS BUILT"
Information shown on these plans was furnished by the Contractor. All responsibility for the accuracy belongs to the Contractor.

STORM SEWER LATERAL PROFILES
THE PRESERVE - PHASE 2
CITY OF ROCKWALL, TEXAS
C&P Engineering, LTD.
Engineering • Planning • Surveying
1801 GATEWAY BLVD. - SUITE 101
RICHARDSON, TEXAS 75080
email: info@c-pengineering.com