

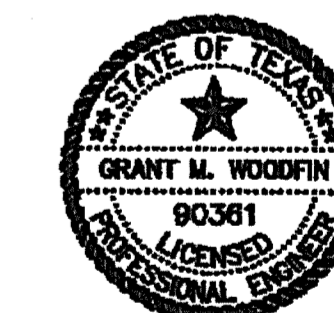
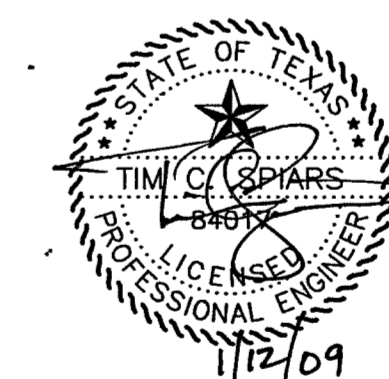
LEGEND

- Ex 60.0 = Existing Ground Elev.
- FP 60.0 = Prop. Finished Pad Elev.
- TC 60.0 = Top of Curb Elev.
- F 60.0 = Finished Grade Elev.
- — — = Retaining Wall
- * = Location of Driveways

BENCHMARK: #1
BRASS CAP IN CL. OF MEDIAN NORTH ON LAKESHORE DRIVE NORTH OF THE INTERSECTION OF NORTH ALAMO AND LAKESHORE DRIVE.
ELEV. 524.78

BENCHMARK: #2
BRASS CAP IN CL. OF MEDIAN ON LAKESHORE DRIVE BETWEEN TO STREETS, STONEBROOK AND AMESBURY BEING NORTH OF HAVEN HILL.
ELEV. 518.83

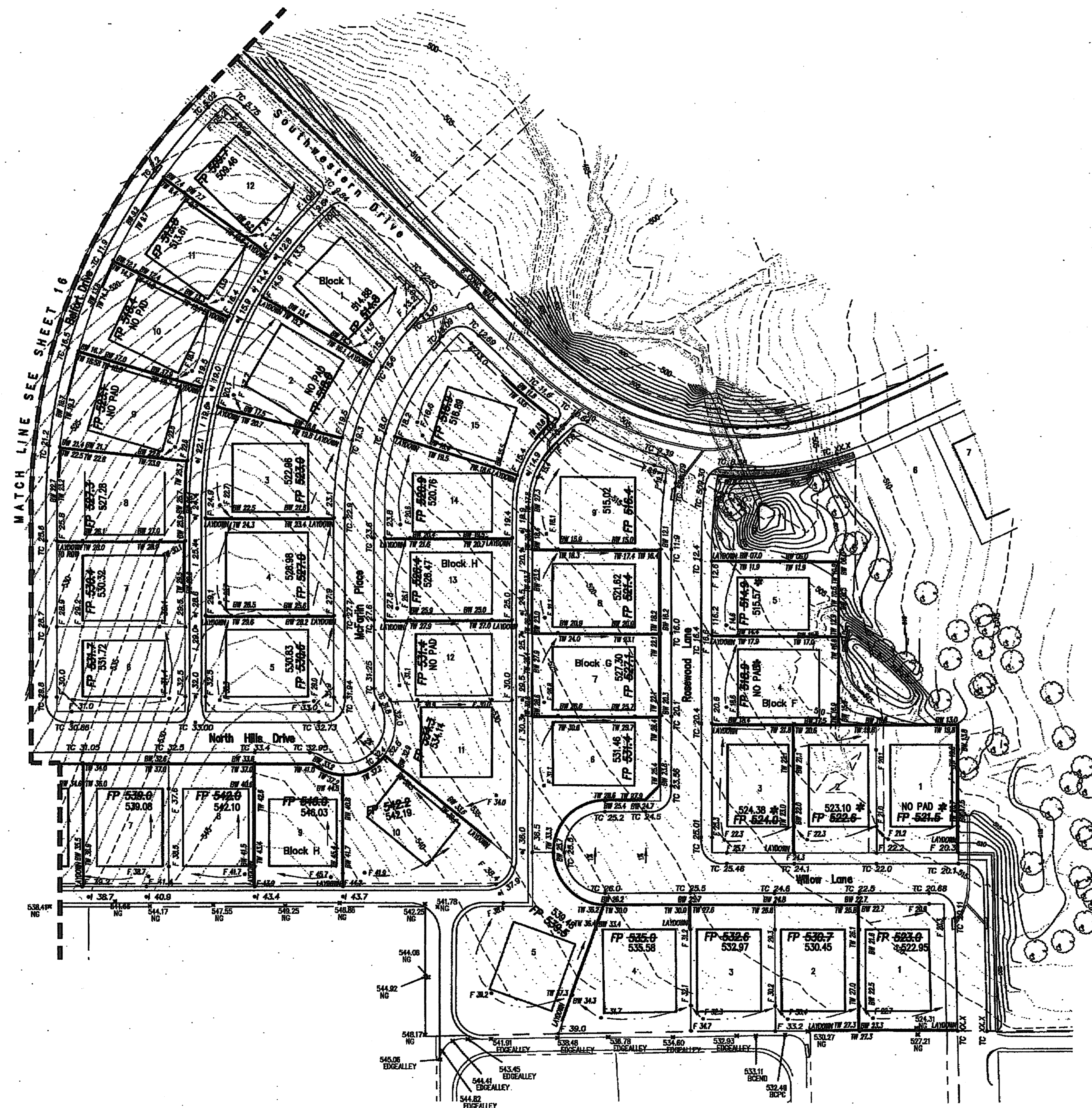
"AS BUILTS"
Information shown on these plans was furnished by the Contractor. All responsibility for the accuracy belongs to the Contractor.



RECORD DRAWINGS

NOTE: THESE PLANS HAVE BEEN REVISED TO CONFORM WITH CONSTRUCTION RECORDS PROVIDED TO SPIARS ENGINEERING, INC. BY CONTRACTOR AND CITY STAFF AFTER AS-BUILTS WERE ORIGINALLY SUBMITTED TO THE CITY OF ROCKWALL BY OTHERS. MODIFICATIONS TO PAVING, PAD AND UTILITY ELEVATIONS, AS REFLECTED ON THESE PLANS, WERE VERIFIED BY FIELD SURVEY PERFORMED IN DECEMBER, 2008.

The Seal Appearing On This Document Was Authorized By
[Signature]
90361, CE
2-28-07



GRADING PLAN
THE PRESERVE - PHASE 2
CITY OF ROCKWALL, TEXAS
C&P Engineering, LTD.
Engineering • Planning • Surveying
1801 GATEWAY BLVD. - SUITE 101
RICHARDSON, TEXAS 75080
email: info@c-pengineering.com