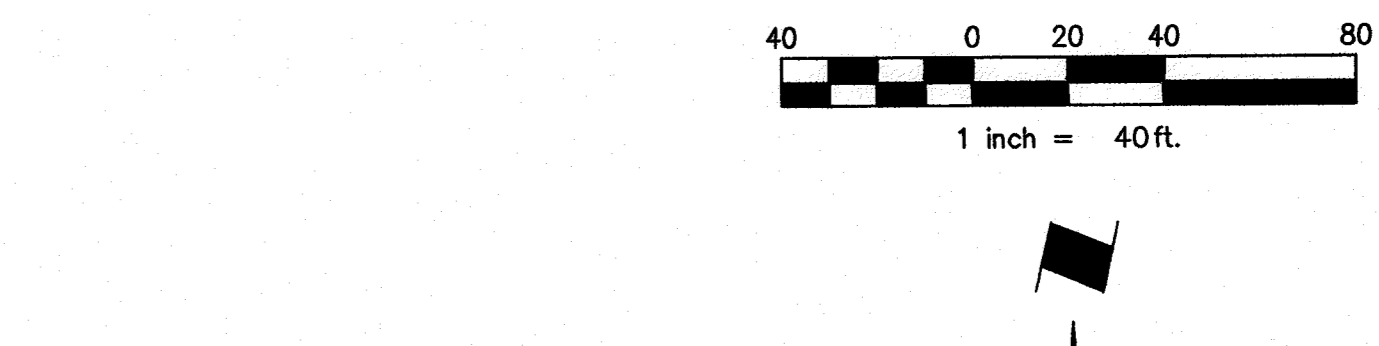
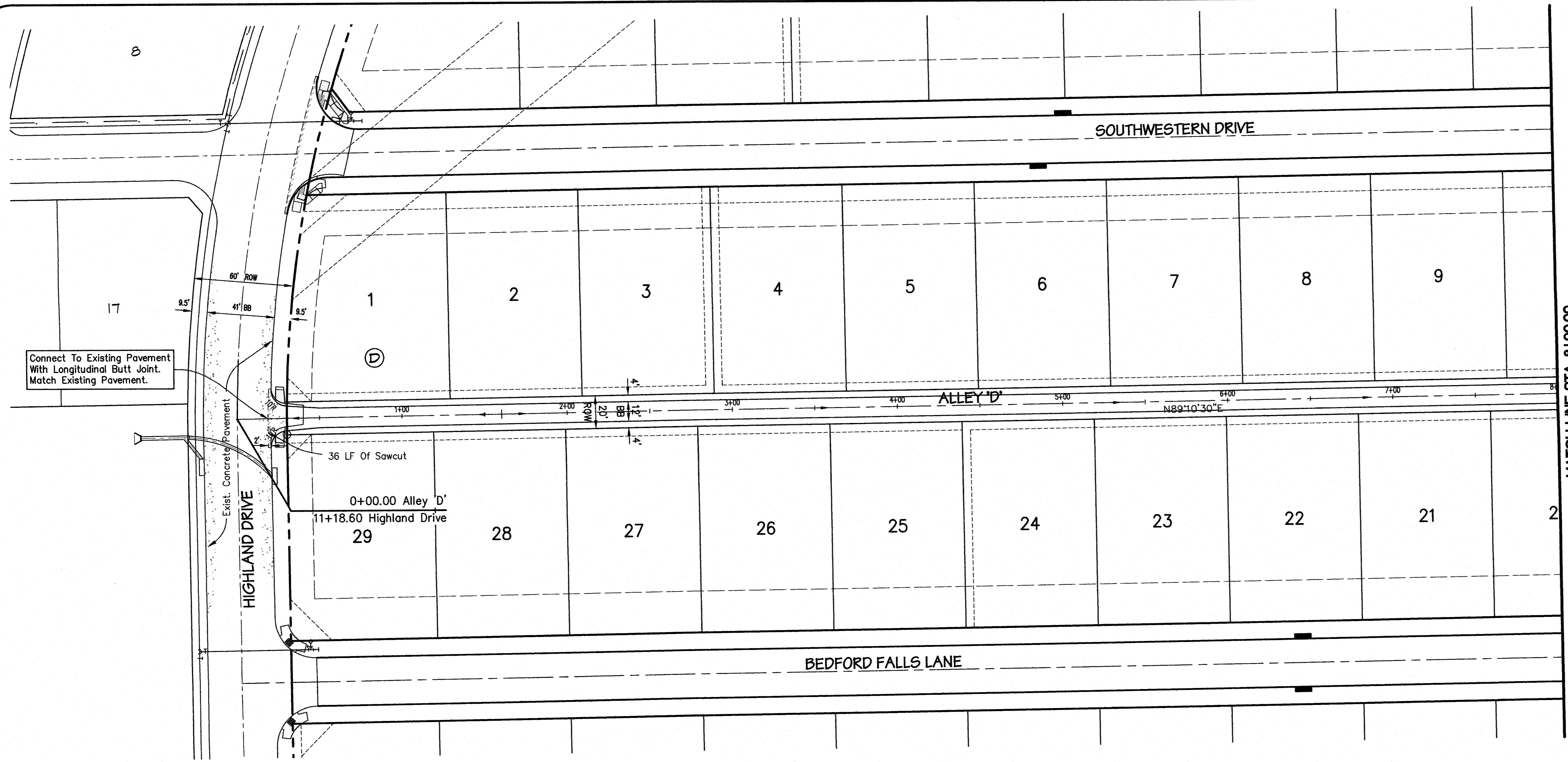
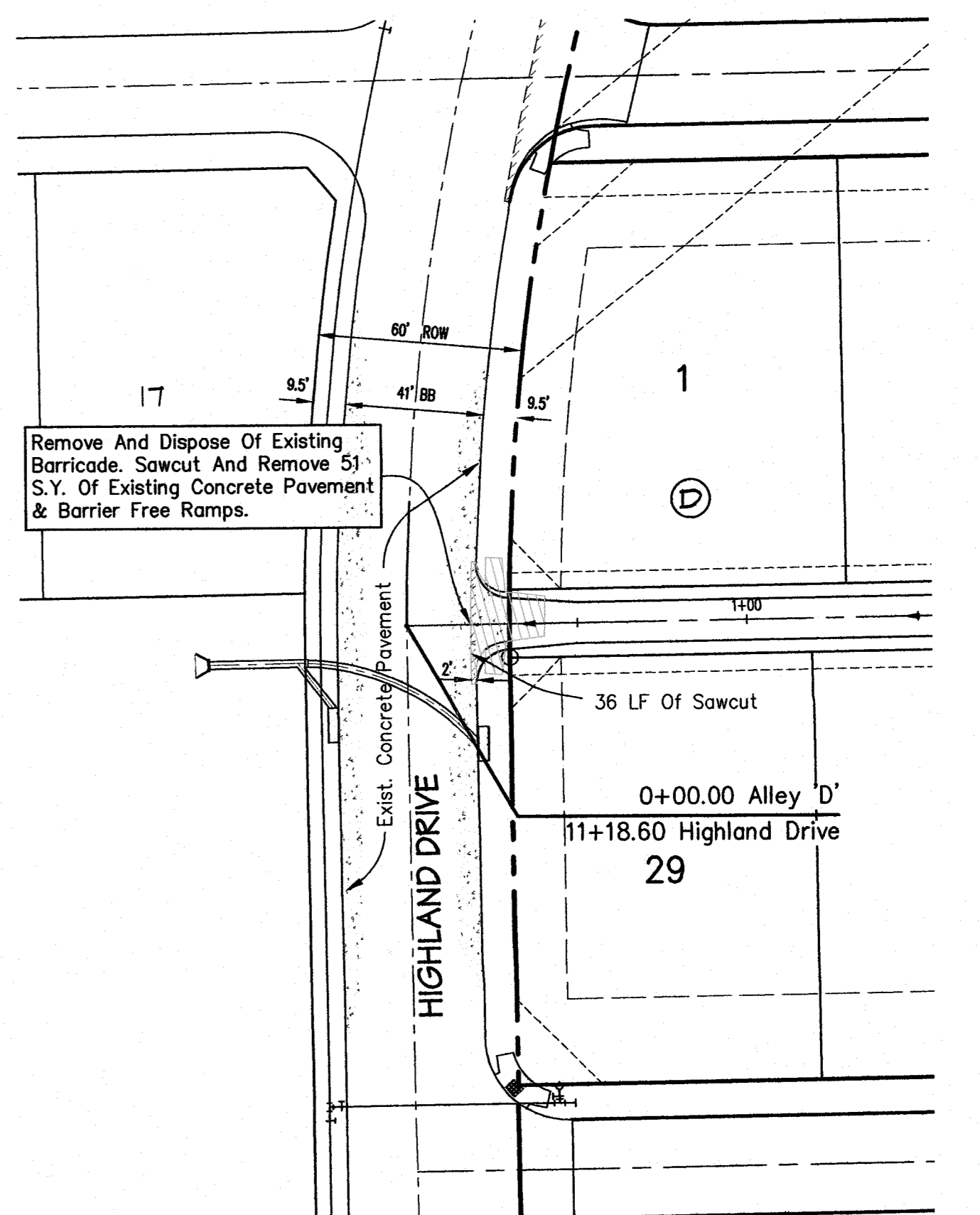


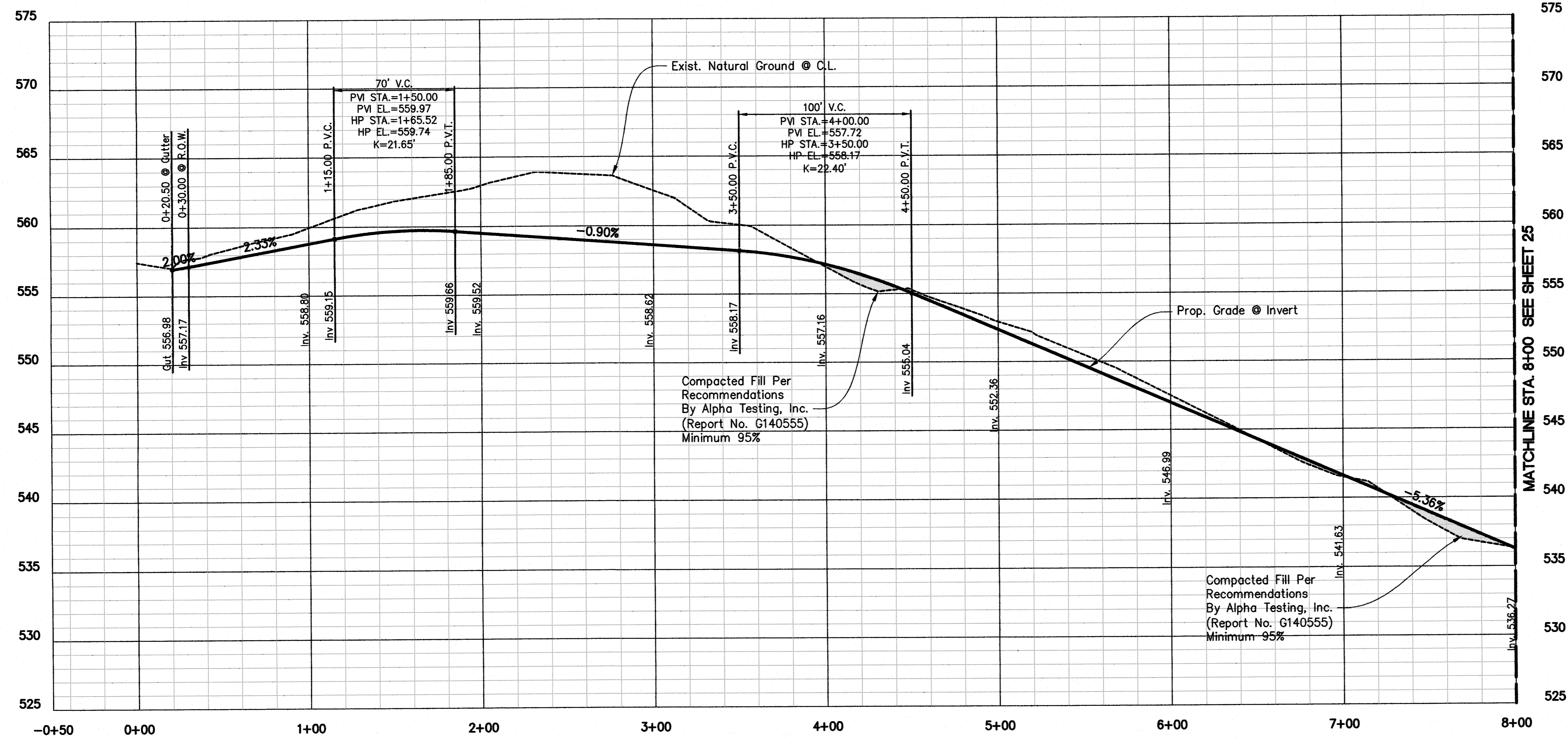
Drawing: G:\2013\_2015\13-141 - The Preserve Phase 1\13-141.dwg, Saved By: Divedidi, Save Time: 8/22/2015 2:07:12 PM  
 Printed by: divedidi Print Date: 10/12/2015 1:35 PM



**AS-BUILT DRAWINGS**  
 THIS DRAWING HAS BEEN REVISED TO CONFORM TO THE CONSTRUCTION RECORDS PROVIDED BY THE CONTRACTOR. ALIGNMENT AND GRADES SHOWN ON THIS DRAWING WERE NOT FIELD VERIFIED BY THE ENGINEER.  
 Greg T. Helsel, P.E.  
 11/29/16  
 DATE



**DEMOLITION DETAIL**



MATCHLINE STA. 8+00 SEE SHEET 25

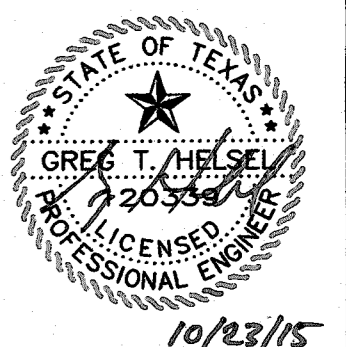
Note:  
 All Barrier Free Ramp To Be Installed With Truncated Dome Plates In Colonial Red Or Brick Red. All Barrier Free Ramps Shown On Plans To Be Installed By Paving Contractor Per TxDOT Standards.

- BM1  
Being an "X" found in concrete at the intersection of the north line of Arcadia Way with the west line of Highland Drive and being the southeast corner of Lot 24, Block Q of the Preserve Phase III.  
Elevation = 565.30
- BM2  
Being an "X" found in concrete at the intersection of the north line of East Fork Road with the west line of Calistoga Drive and being the southeast corner of Lot 16, Block X of Lakeview Summit, Phase One.  
Elevation = 500.49

**CAUTION !!!  
EXISTING UTILITIES**

EXISTING UTILITIES AND UNDERGROUND FACILITIES INDICATED ON THESE PLANS HAVE BEEN LOCATED FROM REFERENCE INFORMATION. IT SHALL BE THE RESPONSIBILITY OF THE CONTRACTOR TO VERIFY BOTH HORIZONTALLY AND VERTICALLY THE LOCATION OF ALL EXISTING UTILITIES AND UNDERGROUND FACILITIES PRIOR TO CONSTRUCTION, TO TAKE NECESSARY PRECAUTIONS IN ORDER TO PROTECT ALL FACILITIES ENCOUNTERED. THE CONTRACTOR SHALL PRESERVE AND PROTECT ALL EXISTING UTILITIES FROM DAMAGE DURING CONSTRUCTION.

CALL 1-800-344-8377 (DIG-TESS) OR OTHER UTILITY LOCATION SERVICES 48 HOURS PRIOR TO CONSTRUCTION ACTIVITY. SPIARS ENGINEERING, INC. IS NOT RESPONSIBLE FOR KNOWING ALL EXISTING UTILITIES OR DEPICTING EXACT LOCATIONS OF UTILITIES ON DRAWINGS.



**THE PRESERVE PHASE 1**  
 CITY OF ROCKWALL  
 ROCKWALL COUNTY, TEXAS  
**PAVING PLAN & PROFILE**

Issue Dates:  
 06-30-2015

Date	Revisions

Scale: 1"=40'H, 1"=5'V  
 Drawn By: GD  
 Checked By: GTH

Sheet **24**  
 of **62**