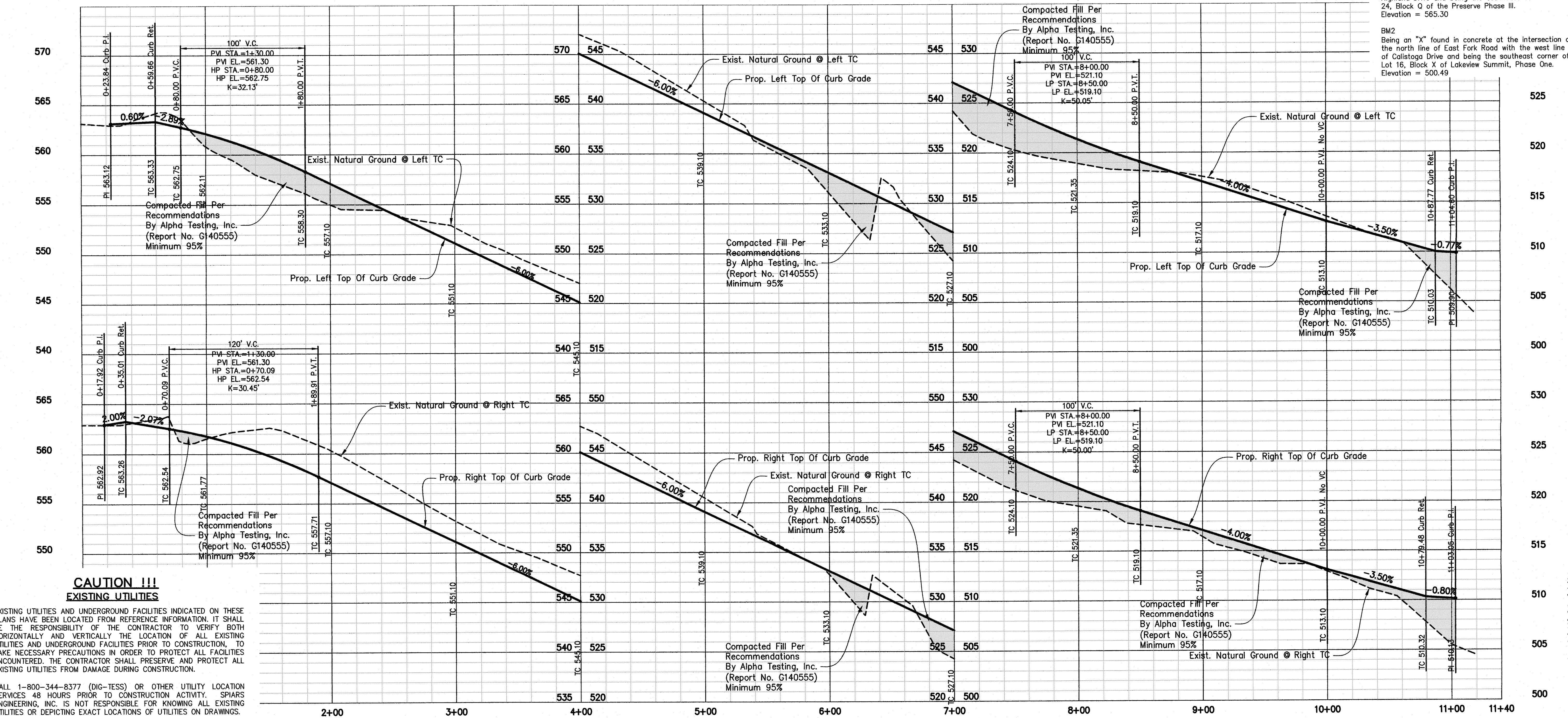
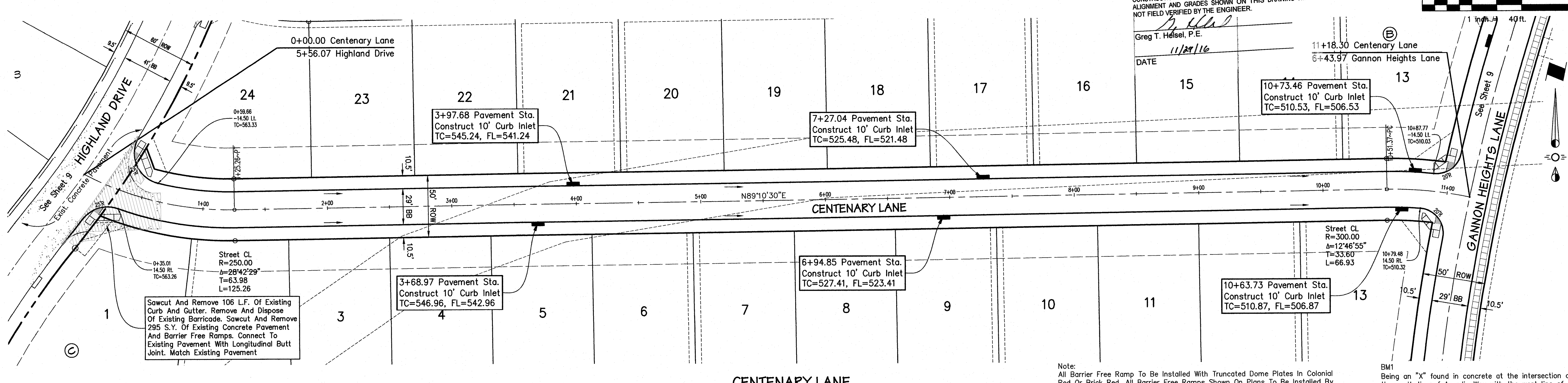
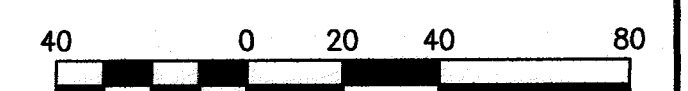


AS-BUILT DRAWINGS

THIS DRAWING HAS BEEN REVISED TO CONFORM TO THE CONSTRUCTION RECORDS PROVIDED BY THE CONTRACTOR. ALIGNMENT AND GRADES SHOWN ON THIS DRAWING WERE NOT FIELD VERIFIED BY THE ENGINEER.

Greg T. Heisel, P.E.
DATE 11/29/16



**CAUTION !!!
EXISTING UTILITIES**

EXISTING UTILITIES AND UNDERGROUND FACILITIES INDICATED ON THESE PLANS HAVE BEEN LOCATED FROM REFERENCE INFORMATION. IT SHALL BE THE RESPONSIBILITY OF THE CONTRACTOR TO VERIFY BOTH HORIZONTALLY AND VERTICALLY THE LOCATION OF ALL EXISTING UTILITIES AND UNDERGROUND FACILITIES PRIOR TO CONSTRUCTION, TO TAKE NECESSARY PRECAUTIONS IN ORDER TO PROTECT ALL FACILITIES ENCOUNTERED. THE CONTRACTOR SHALL PRESERVE AND PROTECT ALL EXISTING UTILITIES FROM DAMAGE DURING CONSTRUCTION.

CALL 1-800-344-8377 (DIG-TESS) OR OTHER UTILITY LOCATION SERVICES 48 HOURS PRIOR TO CONSTRUCTION ACTIVITY. SPIARS ENGINEERING, INC. IS NOT RESPONSIBLE FOR KNOWING ALL EXISTING UTILITIES OR DEPICTING EXACT LOCATIONS OF UTILITIES ON DRAWINGS.

piars ENGINEERING

765 Custer Road, Suite 100 • Plano, TX 75075 • (972) 422-0077 • TBPE No. F-2121

STATE OF TEXAS
GREG T. HEISEL
20375
LICENSED PROFESSIONAL ENGINEER
10/23/15

**THE PRESERVE PHASE 1
CITY OF ROCKWALL
ROCKWALL COUNTY, TEXAS**

PAVING PLAN & PROFILE

Issue Dates:
06-30-2015

Date	Revisions

Scale: 1"=40'H, 1"=5'V
Drawn By: RAS
Checked By: GTH
Sheet 13
of **62**
SEI No. 13-141

Source: G:\3013\285013-141_The_Preserve_Phase_1\13-141_Paving_Plan_Profile_Sheet_B1.dwg, Sheet B1, Date: 8/17/2015, 2:44:54 PM
Plotted by: daniel, Plot Date: 10/17/2015 2:41 PM