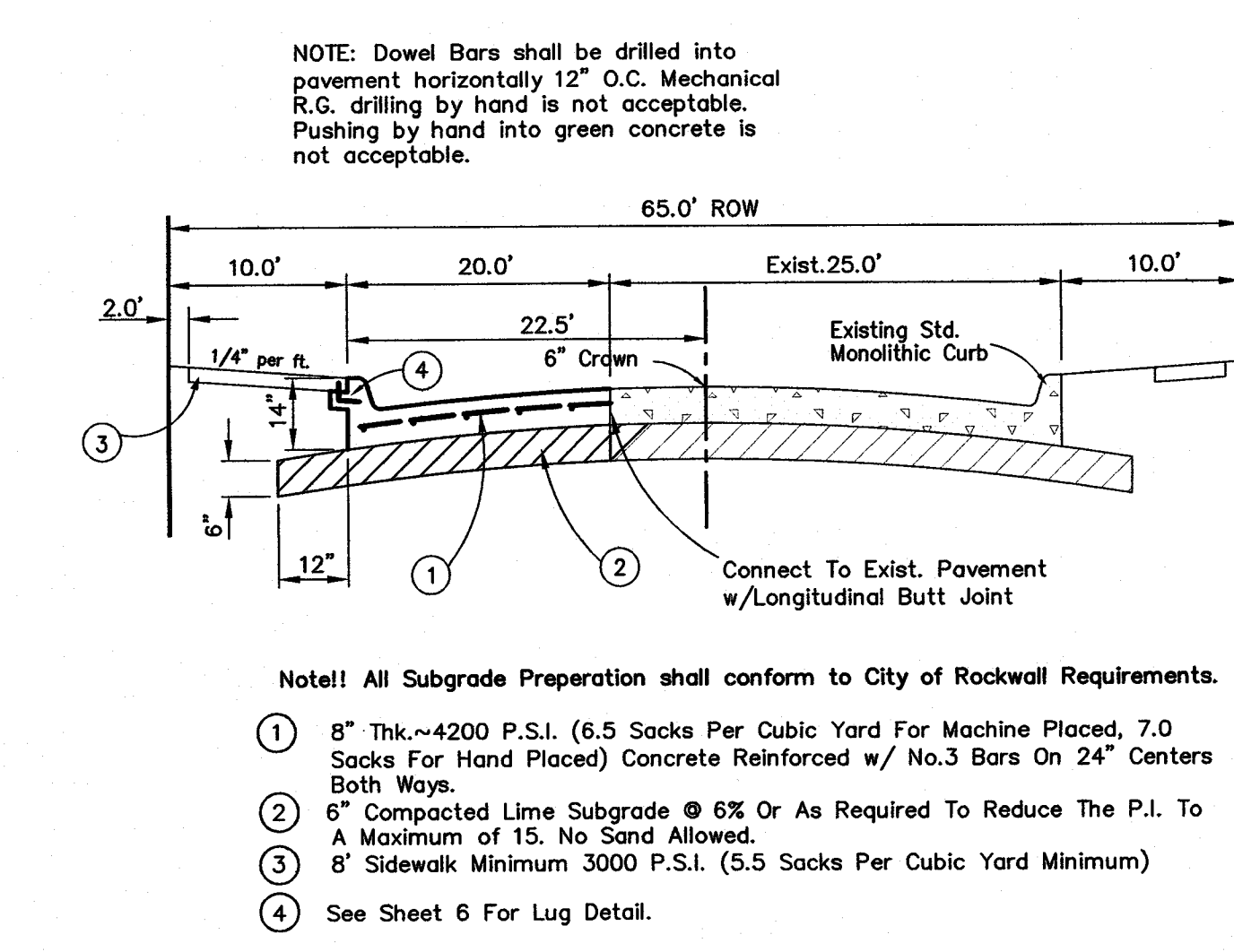
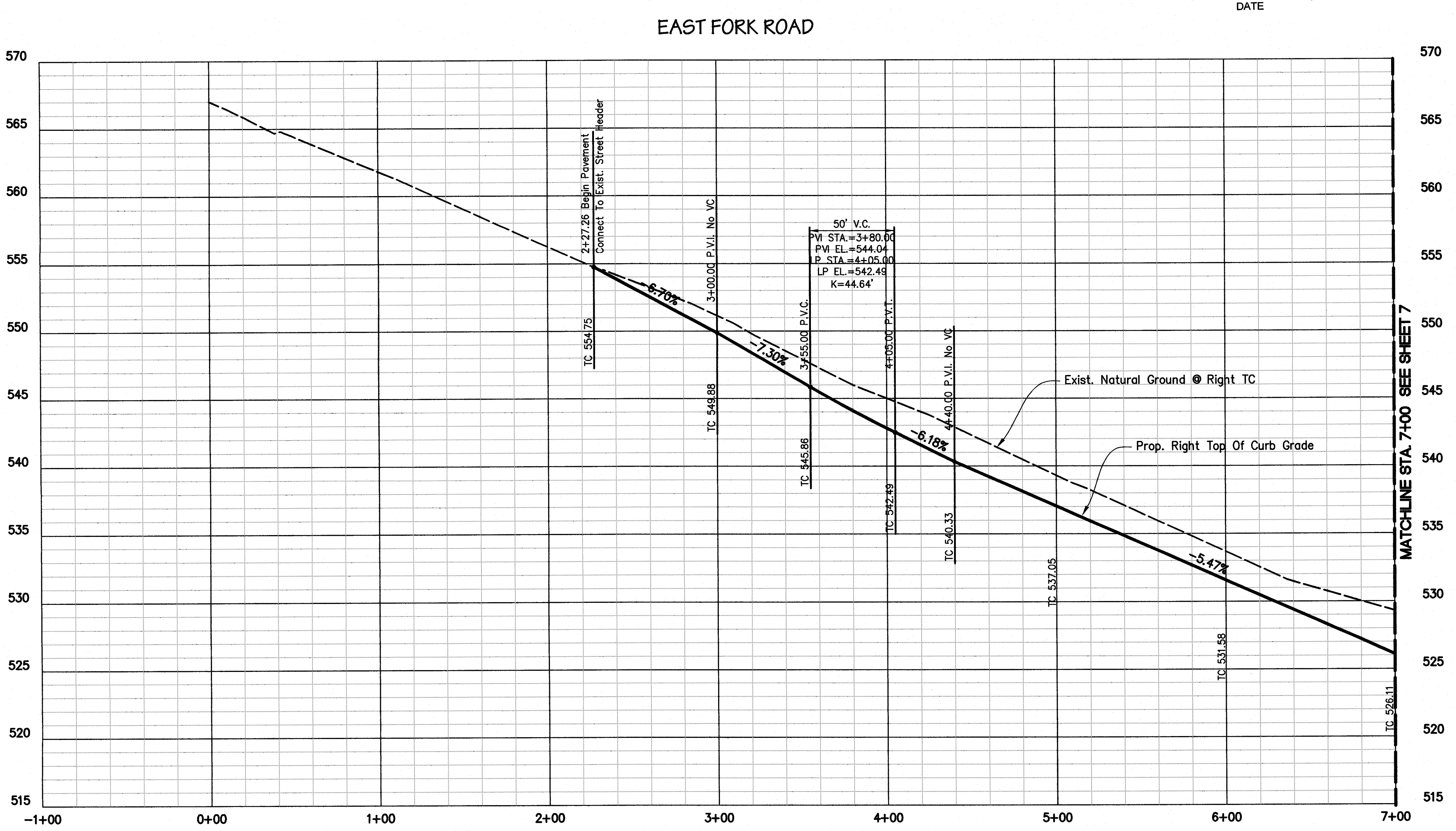


AS-BUILT DRAWINGS
 THIS DRAWING HAS BEEN REVISED TO CONFORM TO THE CONSTRUCTION RECORDS PROVIDED BY THE CONTRACTOR. ALIGNMENT AND GRADES SHOWN ON THIS DRAWING WERE NOT FIELD VERIFIED BY THE ENGINEER.
 Greg T. Helsel, P.E.
 DATE 11/29/16



- Note! All Subgrade Preparation shall conform to City of Rockwall Requirements.
- 8" Thk. ~4200 P.S.I. (6.5 Sacks Per Cubic Yard For Machine Placed, 7.0 Sacks For Hand Placed) Concrete Reinforced w/ No.3 Bars On 24" Centers Both Ways.
 - 6" Compacted Lime Subgrade @ 6% Or As Required To Reduce The P.I. To A Maximum of 15. No Sand Allowed.
 - 8" Sidewalk Minimum 3000 P.S.I. (5.5 Sacks Per Cubic Yard Minimum)
 - See Sheet 6 For Lug Detail.

East Fork Road
Typical 45' BB Pavement Section
 Not To Scale

CAUTION !!!
EXISTING UTILITIES
 EXISTING UTILITIES AND UNDERGROUND FACILITIES INDICATED ON THESE PLANS HAVE BEEN LOCATED FROM REFERENCE INFORMATION. IT SHALL BE THE RESPONSIBILITY OF THE CONTRACTOR TO VERIFY BOTH HORIZONTALLY AND VERTICALLY THE LOCATION OF ALL EXISTING UTILITIES AND UNDERGROUND FACILITIES PRIOR TO CONSTRUCTION, TO TAKE NECESSARY PRECAUTIONS IN ORDER TO PROTECT ALL FACILITIES ENCOUNTERED. THE CONTRACTOR SHALL PRESERVE AND PROTECT ALL EXISTING UTILITIES FROM DAMAGE DURING CONSTRUCTION.

BM1
 Being an "X" found in concrete at the intersection of the north line of Arcadia Way with the west line of Highland Drive and being the southeast corner of Lot 24, Block Q of the Preserve Phase III.
 Elevation = 565.30

BM2
 Being an "X" found in concrete at the intersection of the north line of East Fork Road with the west line of Calistoga Drive and being the southeast corner of Lot 16, Block X of Lakeview Summit, Phase One.
 Elevation = 500.49

piars ENGINEERING

765 Cutler Road, Suite 100 • Plano, TX 75075 • (972) 422-0077 • TPPE No. F-2121

THE PRESERVE PHASE 1
 CITY OF ROCKWALL
 ROCKWALL COUNTY, TEXAS
 PAVING PLAN & PROFILE

Issue Dates:
06-30-2015

Date	Revisions

Scale: 1"=40'H, 1"=5'V
 Drawn By: GD
 Checked By: GTH

Sheet **6**
 of **62**

SEI No. 13-141

Printed by: user@piars.com Date: 12/11/2015 10:21 AM
 Review: E:\2015_2016\13-141 The Preserve Phase 1\3-141-11.pia User: GTH Date: 11/27/2015 2:52:02 PM