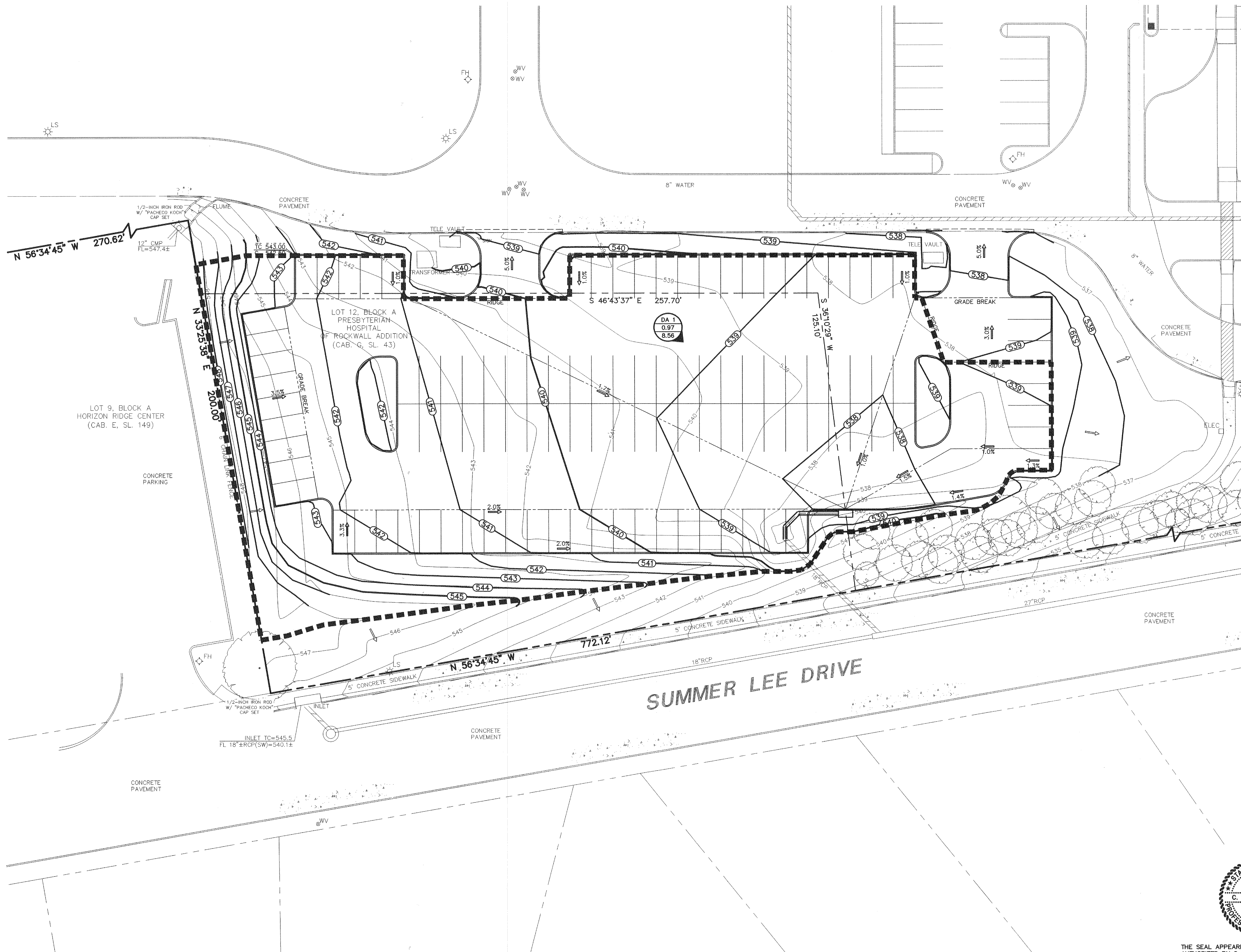


LEGEND

- B. BOLLARD
- EM ⊙ ELECTRIC METER
- PP. POWER POLE
- LS. LIGHT STANDARD
- WM ⊙ WATER METER
- WV ⊙ WATER VALVE
- ICV ⊙ IRRIGATION CONTROL VALVE
- FH ⊙ FIRE HYDRANT
- CQ ⊙ CLEANOUT
- MH ⊙ MANHOLE
- TSC ⊙ TRAFFIC SIGNAL CONTROL
- TSP ⊙ TRAFFIC SIGNAL POLE
- TELE ⊙ TELEPHONE BOX
- FL ⊙ FLOOD LIGHT
- FP ⊙ FLAG POLE
- SIGL ⊙ TRAFFIC SIGN
- PROPERTY LINE
- - - FENCE
- - - PROPOSED DRAINAGE DIVIDE
- PROPOSED CONTOUR
- PROPOSED DRAINAGE FLOW DIRECTION
- DA 7
1.09
8.71 PROPOSED DRAINAGE AREA ID
AREA IN ACRES
Q100 IN CUBIC FEET PER SECOND

PROPOSED DRAINAGE CRITERIA:
 $Q = (C)(I)(A)$

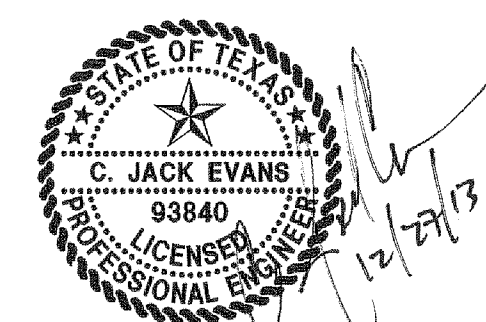
DRAINAGE AREA TABLE							
DRAINAGE AREA ID	AREA (acres)	C	Tc (minutes)	STORM FREQUENCY (100 YEAR)	Q100 (inches/hour)	Q100 (cfs)	COMMENTS
DA 1	0.97	0.90	10	100 YEAR	9.8	8.56	DRAINS TO PROPOSED CURB INLET



RECORD DRAWING

THE SIGNED AND SEALED CONSTRUCTION DOCUMENT HAS BEEN REVISED TO REFLECT CONSTRUCTION RECORDS MAINTAINED AND PROVIDED BY THE CONTRACTOR FOR THIS PROJECT. THE INFORMATION SHOWN ON THIS RECORD DRAWING, WHICH WAS PROVIDED BY THE CONTRACTOR, OR OTHERS NOT ASSOCIATED WITH THE DESIGN ENGINEER, CANNOT BE VERIFIED FOR ACCURACY OR COMPLETENESS. PACHECO KOCH SHALL ASSUME NO LIABILITY FOR ANY CHANGES MADE DURING CONSTRUCTION THAT WERE NOT SPECIFICALLY APPROVED BY THE ENGINEER PRIOR TO CONSTRUCTION. THE SEALED CONSTRUCTION DRAWINGS ARE ON FILE AT THE OFFICES OF PACHECO KOCH.

ATTESTED BY: *[Signature]*
 SIGNATURE: _____
 ENGINEER OF RECORD: C. JACK EVANS
 CONTRACTOR: ROGERS-O'BRIEN CONSTRUCTION CO., LTD
 DATE REVISED: 03/26/2014



THE SEAL APPEARING ON THIS DOCUMENT WAS AUTHORIZED BY C. JACK EVANS, P.E. 93840 ON 12/27/2013. ALTERATION OF A SEALED DOCUMENT WITHOUT PROPER NOTIFICATION TO THE RESPONSIBLE ENGINEER IS AN OFFENSE UNDER THE TEXAS ENGINEERING PRACTICE ACT.

NO.	DATE	REVISION
1	01/21/2014	ADDED SHEET PER 1ST ROUND OF CITY COMMENTS

Pacheco Koch
 8350 N. CENTRAL EXPWY., SUITE 1000
 DALLAS, TX 75206 972.235.3031
 TX REG. ENGINEERING FIRM F-14439
 TX REG. SURVEYING FIRM LS-101938-05

DRAINAGE AREA MAP
THR PRESBYTERIAN HOSPITAL OF ROCKWALL
PARKING LOT EXPANSION
3150 HORIZON ROAD
CITY OF ROCKWALL, ROCKWALL COUNTY, TEXAS

DESIGN	DRAWN	DATE	SCALE	NOTES	FILE	NO.
JGW	JGW JQ	DEC 2013	1"=20'			C4.1

JOHNSON'S
 M. (DWG-15) 1567-13.397.DWG CIVIL CSD 2012 1567-13.397-DM.DWG
 3:41PM

THR PRESBYTERIAN HOSPITAL OF ROCKWALL - PARKING LOT EXPANSION