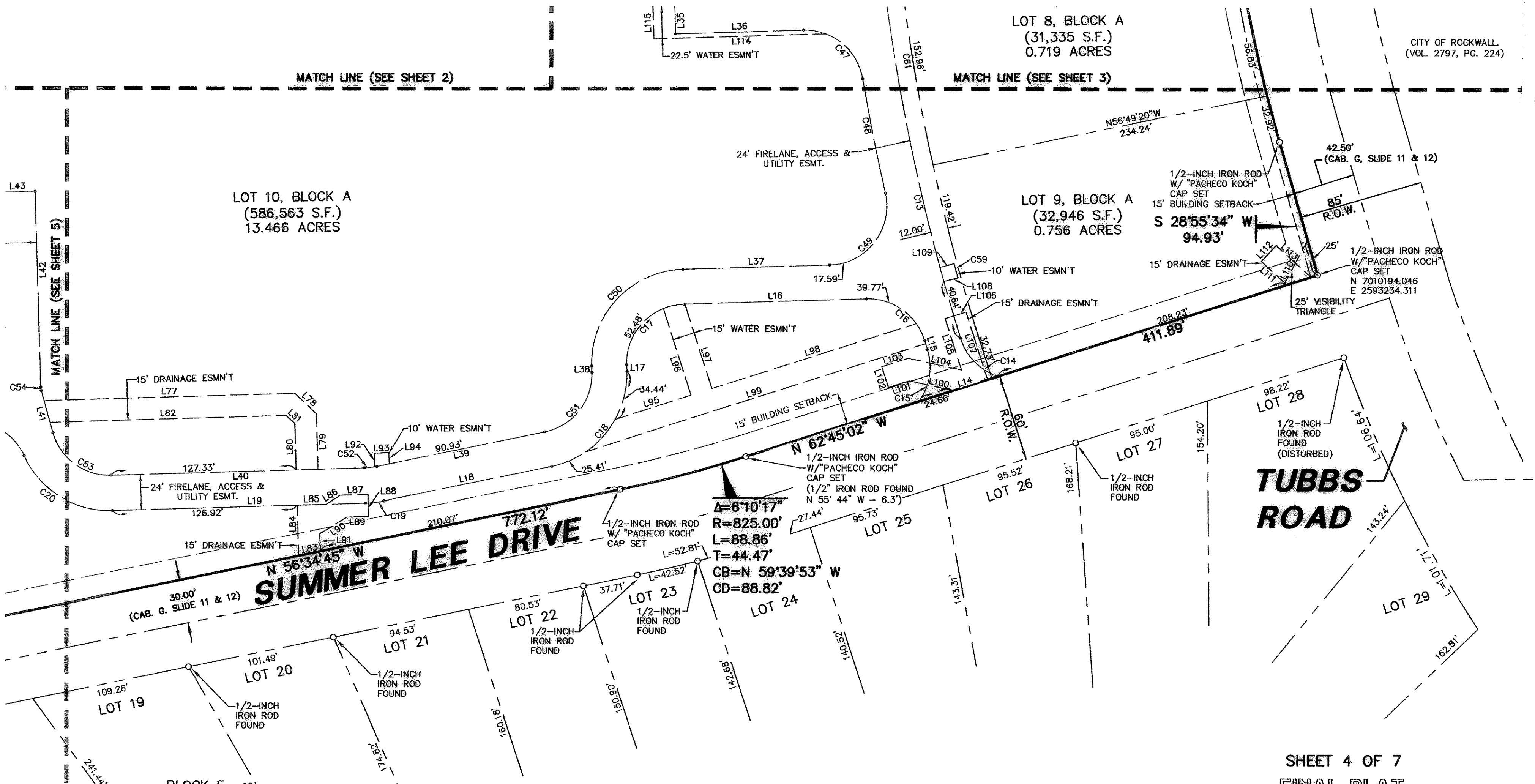


CITY OF ROCKWALL  
(VOL. 2797, PG. 224)



SHEET 4 OF 7  
FINAL PLAT

**LOT'S 1 THRU 14, BLOCK A  
PRESBYTERIAN HOSPITAL  
OF ROCKWALL ADDITION**

33.201 ACRES, ZONED GR  
LOCATED IN THE CITY OF ROCKWALL, TEXAS  
AND BEING OUT OF THE  
EDWARD TEAL SURVEY, ABSTRACT NO. 207,  
ROCKWALL COUNTY, TEXAS

<b>Pacheco Koch Consulting Engineers</b>				
8350 N. CENTRAL EXPWY. SUITE 1000 DALLAS, TX. 75206 972.235.3031				
<b>DRAWN BY</b> RRL	<b>CHECKED BY</b> EMH	<b>SCALE</b> 1"=50'	<b>DATE</b> 09/06/2006	<b>JOB NUMBER</b> 1567-06.023

RLEWIS  
09/07/2006 - 12:23PM  
M:\DWG-15\1567-06-023\DWG\1567-06-023PP.DWG