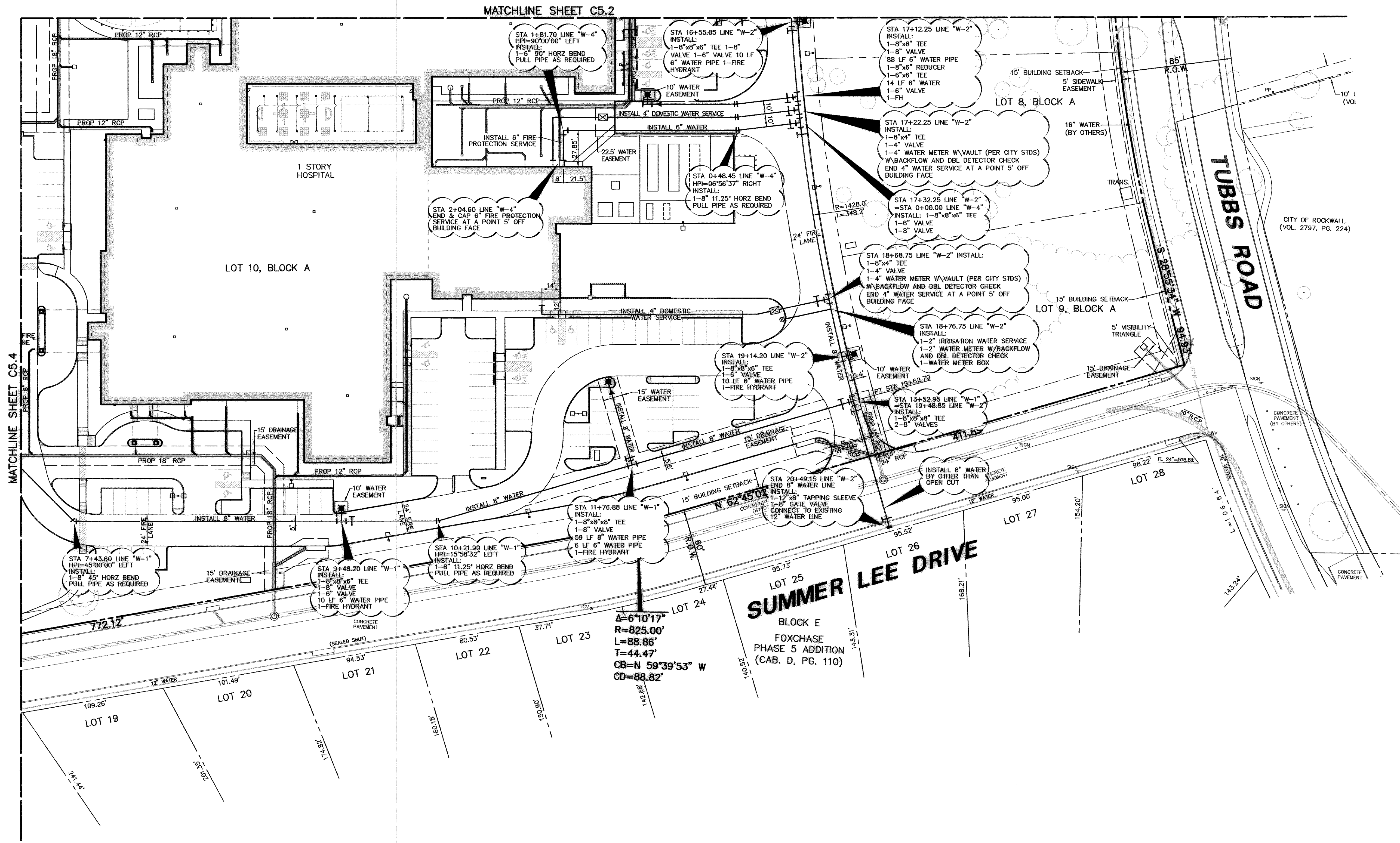


**LEGEND**

PH	FIRE HYDRANT
PP	POWER POLE
LS	LIGHT STANDARD
WM	WATER METER
WV	WATER VALVE
CL	CLEANOUT
MH	MANHOLE
GM	GAS METER
---	PROPERTY LINE



MATCHLINE SHEET C5.2

MATCHLINE SHEET C5.4

**LOT 25**  
**SUMMER LEE DRIVE**  
 BLOCK E  
 FOXCHASE  
 PHASE 5 ADDITION  
 (CAB. D, PG. 110)

SEE SHEET C5.2 FOR WATER AND SANITARY SEWER NOTES

**BENCH MARK LIST**

- BM# 1 CITY OF ROCKWALL MONUMENT "RESET 1"; 3" BRASS DISK FOUND AT RIDGE ROAD (F.M. 740) AND SUMMER LEE DRIVE NEAR THE NORTH WEST CORNER OF THE A PARKING LOT FOR COMMUNITY BANK. ELEV=567.70
- BM# 2 " " CUT FOUND ON THE BACK OF CURB ON THE POINT ON CURVATURE OF THE SOUTHWEST CORNER OF THE INTERSECTION OF SUMMER LEE DRIVE AND OAK DRIVE. ELEV=563.21
- BM# 3 " " CUT SET ON THE BACK OF CURB AT THE POINT OF CURVE OF ROCKWALL PARKWAY AT THE NORTHEAST CORNER OF THE INTERSECTION OF SUMMER LEE DRIVE AND ROCKWALL PARKWAY. ELEV=552.82



THE SEAL APPEARING ON THIS DOCUMENT WAS AUTHORIZED BY ERIC M. HAUGLE, P.E. 94736 ON 07/17/2006. ALTERATION OF A SEALED DOCUMENT WITHOUT PROPER NOTIFICATION TO THE RESPONSIBLE ENGINEER IS AN OFFENSE UNDER THE TEXAS ENGINEERING PRACTICE ACT.

**RECORD DRAWING**

THIS DRAWING HAS BEEN REVISED TO REFLECT CONSTRUCTION RECORDS MAINTAINED AND PROVIDED BY THE CONTRACTOR FOR THIS PROJECT. A VISUAL REVIEW OF THE COMPLETED SITE CONSTRUCTION BY PACHECO KOCH, AND FIELD SURVEY VERIFICATION AT MANHOLES AND INLETS BY PACHECO KOCH.

CONTRACTOR: ROSENBERG O'BRIEN CONSTRUCTION CO.  
 DATE REVISED: 11/14/2007

NO.	DATE	REVISION

**Pacheco Koch Consulting Engineers**  
 8350 N. CENTRAL EXPWY. SUITE 1000 DALLAS, TX. 75206 972.235.3031

**WATER & SANITARY SEWER PLAN**

**ROCKWALL COMMUNITY HOSPITAL**  
**HORIZON ROAD @ ROCKWALL PARKWAY**  
**EDWARD TEAL SURVEY, ABST. NO. 207**

**CITY OF ROCKWALL, TEXAS**

DESIGN	DRAWN	DATE	SCALE	NOTES	FILE	NO.
EMH	RRL	JULY 2006	1"=40'			<b>C5.3</b>

RLWIS 11/14/07 9:51AM  
 M:\DWG-15\1567-05-270\DWG\1567-05-270CVDWG

ROCKWALL COMMUNITY HOSPITAL