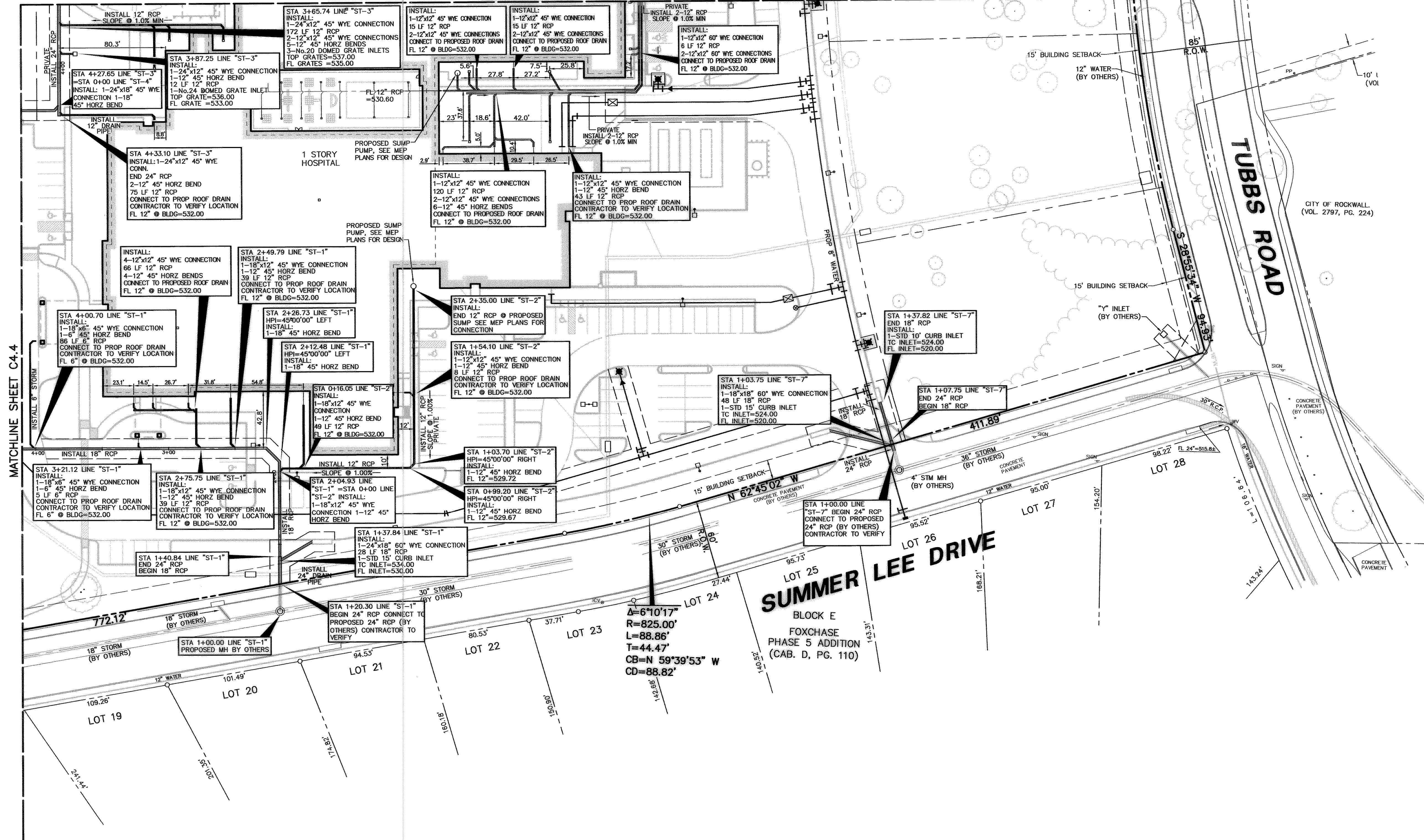


LEGEND

FD	FIRE HYDRANT
PP	POWER POLE
LS	LIGHT STANDARD
WM	WATER METER
WV	WATER VALVE
CO	CLEANOUT
MH	MANHOLE
GM	GAS METER
---	PROPERTY LINE

MATCHLINE SHEET C4.2



RECORD DRAWING

THIS DRAWING HAS BEEN REVISED TO REFLECT CONSTRUCTION RECORDS MAINTAINED AND PROVIDED BY THE CONTRACTOR FOR THIS PROJECT. A VISUAL REVIEW OF THE COMPLETED SITE CONSTRUCTION BY PACHECO KOCH, AND FIELD SURVEY VERIFICATION AT MANHOLES AND INLETS BY PACHECO KOCH.

CONTRACTOR: ROGERS-O'BRIEN CONSTRUCTION CO.
 DATE REVISED: 11/14/2007

NO.	DATE	REVISION
1	11/29/2006	ADDED 12" PARALLEL STORM LINE
2	11/17/2006	ADDED ROOF DRAINS TO BUILDING E
3	8/25/2006	REVISED TO MOVE "ST-1" FROM UNDER OVERHANG AND REVISED ROOF DRAINS

Pacheco Koch Consulting Engineers
 8350 N. CENTRAL EXPWY. SUITE 1000 DALLAS, TX. 75206 972.235.3031

STORM SEWER PLAN
ROCKWALL COMMUNITY HOSPITAL
HORIZON ROAD @ ROCKWALL PARKWAY
EDWARD TEAL SURVEY, ABST. NO. 207
CITY OF ROCKWALL, TEXAS

DESIGN	DRAWN	DATE	SCALE	NOTES	FILE	NO.
EMH	RRL	JULY 2006	1"=40'			C4.3



THE SEAL APPEARING ON THIS DOCUMENT WAS AUTHORIZED BY ERIK M. HAUGLIE, P.E. 94736 ON 07/17/2006. ALTERATION OF A SEALED DOCUMENT WITHOUT PROPER NOTIFICATION TO THE RESPONSIBLE ENGINEER IS AN OFFENSE UNDER THE TEXAS ENGINEERING PRACTICE ACT.

PLEWIS
 03/25/2008 - 9:19AM
 R: \\NW-15\1567-05.270.DWG\1567-05-270C4.DWG