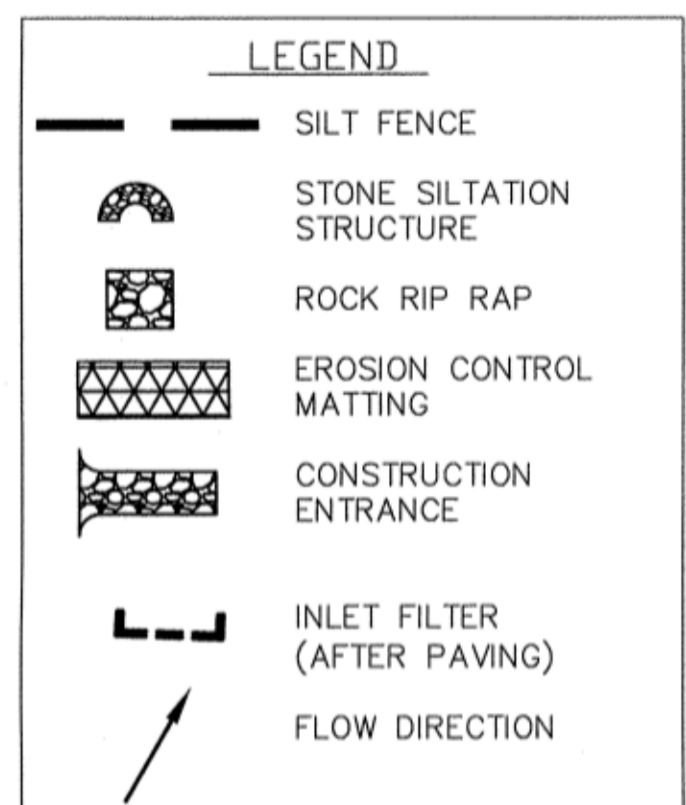
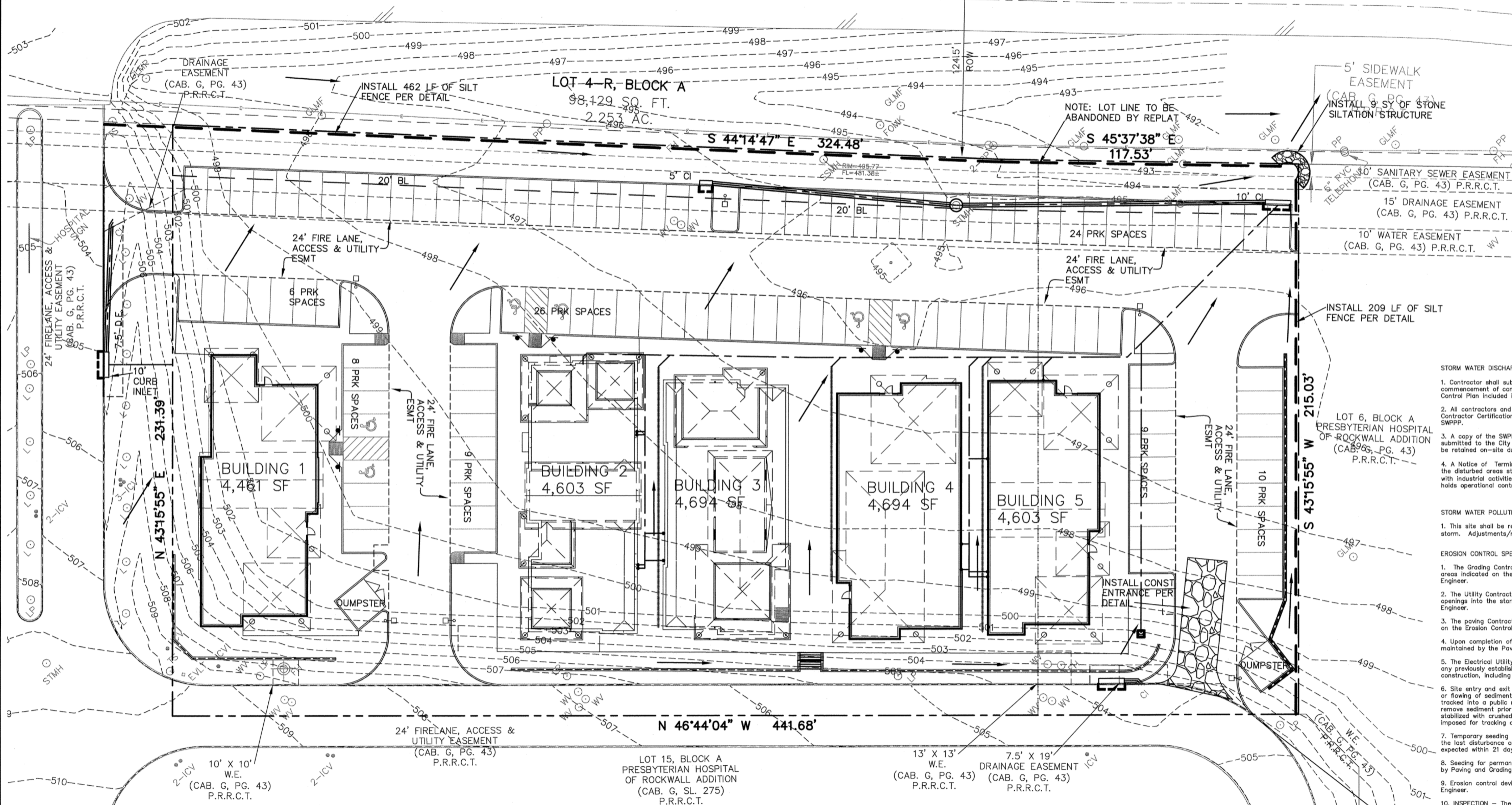
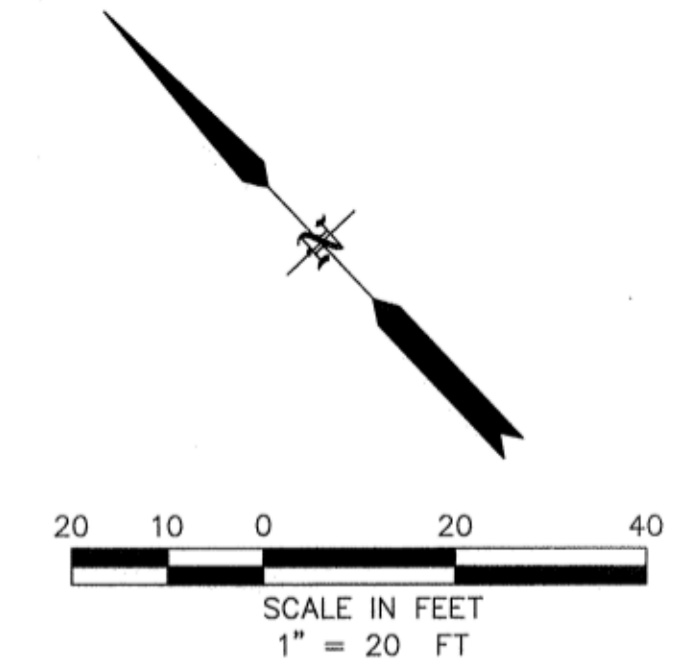


HORIZON ROAD
(F.M. ROAD NO. 3097)



- STORM WATER DISCHARGE AUTHORIZATION:**
- Contractor shall submit a Notice of Intent (NOI) to TCEQ no less than 2 days prior to commencement of construction activities. All grading activities shall conform to the Erosion Control Plan included in the approved construction plans.
 - All contractors and subcontractors providing services related to the SWPPP shall sign a Contractor Certification statement acknowledging their responsibilities as specified in the SWPPP.
 - A copy of the SWPPP, including Contractor Certifications and any Revisions, shall be submitted to the City and Design Engineer and filed with the construction plans, and shall be retained on-site during construction.
 - A Notice of Termination (NOT) shall be submitted to TCEQ when the site has 100% of the disturbed areas stabilized and the site no longer has storm water discharges associated with industrial activities (construction), or the NOI permittee or co-permittee no longer holds operational control of the construction.

- STORM WATER POLLUTION PROTECTION PLAN:**
- This site shall be reviewed by owner or his representative weekly and after any major storm. Adjustments/repairs to the erosion control will then be made as needed.

- EROSION CONTROL SPECIFICATIONS:**
- The Grading Contractor shall provide and maintain all erosion control devices in the areas indicated on the Erosion Control Plan and any other areas as directed by the Engineer.
 - The Utility Contractor shall provide and maintain all erosion control device around all openings into the storm sewer system to protect completion and as directed by the Engineer.
 - The Paving Contractor shall provide and maintain all erosion control devices as indicated on the Erosion Control Plan and as directed by the Engineer.
 - Upon completion of fine grading, all street parkways shall be seeded, fertilized, and maintained by the Paving Contractor in accordance with the City specifications.
 - The Electrical Utility, Natural Gas, Telephone, and Cable TV Contractor shall re-establish any previously established erosion control measure or device that is disturbed by their construction, including vegetative cover.
 - Site entry and exit locations shall be maintained in a condition which will prevent tracking or flowing of sediment onto public roadways. All sediment spilled, dropped, washed, or tracked into a public roadway must be removed immediately. When washing is required to remove sediment prior to entrance to a public roadway, it shall be done on an area stabilized with crushed stone which drains into an approved sediment basin. All fines imposed for tracking onto public roads shall be paid by the Contractor.
 - Temporary seeding or other methods of stabilization shall be initiated within 14 days of the last disturbance on any area of the site, unless additional construction on the area is expected within 21 days of the last disturbance.
 - Seeding for permanent vegetative cover shall be initiated upon completion of fine grading by Paving and Grading Contractor, see Final Stabilization.
 - Erosion control devices may be added or reduced in the field as directed by the Engineer.
 - INSPECTION** - The Contractor shall conduct inspections of all erosion controls provided in the SWPPP at a minimum of once every 7 calendar days. When field inspection reveals an inadequacy in erosion control measures, the SWPPP shall be revised and erosion control measures shall be upgraded within 7 days.
 - MAINTENANCE** - Erosion controls shall be repaired or replaced as inspection deems necessary or as directed by the Engineer. Accumulated silt at any erosion control device shall be removed when it reaches a depth of 6", and shall be distributed on site in a manner not contributing to additional siltation.
 - The Contractor is responsible for re-establishing any erosion control device which he disturbs. Each Contractor shall notify the Engineer of any deficiencies in the established erosion control measures which may lead to unauthorized discharge of storm water pollution, sedimentation, or other surface or ground water pollutants, and excessive dust or other airborne pollutants. Unauthorized pollutants include, but are not limited to, excess concrete dumping or concrete residue, paints and other overspray, solvents, greases, fuel and lube oil, pesticides, and solid waste materials.
 - FINAL STABILIZATION** - Upon completion of all soil disturbing construction, all areas not paved or covered by permanent structures or equivalent permanent stabilization measures shall be stabilized with a uniform perennial vegetative cover. For termination of industrial status of the construction site, the vegetative cover must meet a minimum density of 70% as determined by the Engineer. All temporary erosion control measures must be removed.

**EROSION CONTROL PLAN
GENERAL NOTES:**

- EROSION CONTROL DEVICES AS SHOWN ON THE EROSION CONTROL PLAN FOR THE PROJECT SHALL BE INSTALLED PRIOR TO THE START OF LAND DISTURBING ACTIVITIES ON THE PROJECT.
- ALL EROSION CONTROL DEVICES ARE TO BE INSTALLED IN ACCORDANCE WITH THE APPROVED PLANS AND SPECIFICATIONS FOR THE PROJECT. CHANGES ARE TO BE APPROVED BEFORE CONSTRUCTION BY THE DESIGN ENGINEER AND CITY OF ROCKWALL ENGINEERING DIVISION.
- IF THE EROSION CONTROL PLAN AS APPROVED CANNOT CONTROL EROSION AND OFF-SITE SEDIMENTATION FROM THE PROJECT THE EROSION CONTROL PLAN WILL BE REQUIRED TO BE REVISED AND/OR ADDITIONAL EROSION CONTROL DEVICES WILL BE REQUIRED ON SITE.
- IF OFF-SITE SOIL BORROW OR SPOIL SITES ARE USED IN CONJUNCTION WITH THIS PROJECT, THIS INFORMATION SHALL BE DISCLOSED AND SHOWN ON THE EROSION CONTROL PLAN. OFF-SITE BORROW AND SPOIL AREAS ARE CONSIDERED A PART OF THE PROJECT SITE AND THEREFORE SHALL COMPLY WITH THE CITY OF ROCKWALL EROSION CONTROL REQUIREMENTS. THESE AREAS SHALL BE STABILIZED WITH PERMANENT GROUND COVER PRIOR TO FINAL APPROVAL OF THE PROJECT.
- SEE SHEET 7 SITE GRADING.
- SEE SHEET 9 PROPOSED UTILITIES.
- SEE SHEET 6 FOR DRAINAGE CALCULATIONS AND IMPROVEMENTS.
- CONTRACTOR MAY CONSTRUCT STABILIZED CONSTRUCTION ENTRANCE(S) AT ALTERNATE LOCATIONS IF NEEDED. CONTRACTOR TO COORDINATE LOCATION WITH OWNER.
- REFER TO SWPPP (BY OTHERS).
- NOI SHALL BE FILED WITH TCEQ PRIOR TO ANY LAND DISTURBANCE (BY OTHERS). EROSION CONTROL MEASURES MAY ONLY BE PLACED IN FRONT OF INLETS, OR IN CHANNELS, DRAINAGE WAYS OR BORROW DITCHES AT RISK OF CONTRACTOR. CONTRACTOR SHALL REMAIN LIABLE FOR ANY DAMAGE CAUSED BY THE MEASURES, INCLUDING FLOODING DAMAGE, WHICH MAY OCCUR DUE TO BLOCKED DRAINAGE. AT THE CONCLUSION OF ANY PROJECT, ALL CHANNELS, DRAINAGE WAYS AND BORROW DITCHES IN THE WORK ZONE SHALL BE DREDGED OF ANY SEDIMENT GENERATED BY THE PROJECT OR DEPOSITED AS A RESULT OF EROSION CONTROL MEASURES.
- ALL DISTURBED AREAS OUTSIDE OF PAVEMENT AND NON-LANDSCAPED AREAS SHALL BE SEEDED WITH COMMON BERMUDA UPON COMPLETION OF GRADING. CONTRACTOR TO MAINTAIN SEEDED AREAS UNTIL GRASS IS ESTABLISHED ACCORDING TO TCEQ REGULATIONS. MINIMUM 75% - 80% COVERAGE (1" OR TALLER) PRIOR TO CITY ACCEPTANCE.

RECORD DRAWINGS
THESE RECORD DRAWINGS HAVE BEEN PREPARED BASED ON INFORMATION PROVIDED BY OTHERS. THE ENGINEER HAS NOT VERIFIED THE ACCURACY OF THIS INFORMATION AND SHALL NOT BE RESPONSIBLE FOR ANY DISCREPANCIES WHICH MAY BE INCORPORATED HEREIN AS A RESULT.
ENGINEERING CONCEPTS & DESIGNS, L.P.
TODD WINTTERS, P.E. DATE 12-11-12

BENCHMARK:
ROCKWALL MONUMENT "RESET #1" 3" BRASS DISK FOUND AT FM 740 (RIDGE ROAD) AND SUMMER LEE DRIVE NEAR THE NORTH WEST CORNER OF THE PARKING LOT FOR THE COMMUNITY BANK.
NORTHING: 7011544.252 EASTING: 2590135.160
ELEVATION: 567.704
BASED ON NAD-83 TX, STATE PLANE, NORTH CENTRAL ZONE

ENGINEERING CONCEPTS & DESIGN, L.P.
ENGINEERING / PROJECT MANAGEMENT / CONSTRUCTION SERVICES - FIRM REG. #F-001145
2801 CAPITAL, WYLIE, TX 75098
972-941-8400 FAX: 972-941-8401 WWW.ECDLP.COM

REVISIONS:

DRAWN: ECD	DATE: 7 December 2012
CHECKED: TW	DATE: MAY 2009
PROJECT NO.: 09810	
DWG FILE NAME: 9810 DIM CONTROL.DWG	

THIS DOCUMENT IS RELEASED FOR THE PURPOSE OF CONSTRUCTION. THE SEAL APPEARING ON THIS DOCUMENT WAS AUTHORIZED BY TODD D. WINTTERS, P.E. 87085

EROSION CONTROL
LOTS 4&5 BLK A, (PROP LOT 4-R)
PRESBYTERIAN HOSPITAL ADDN.
CITY OF ROCKWALL, ROCKWALL COUNTY, TEXAS

SHEET
10
OF
14