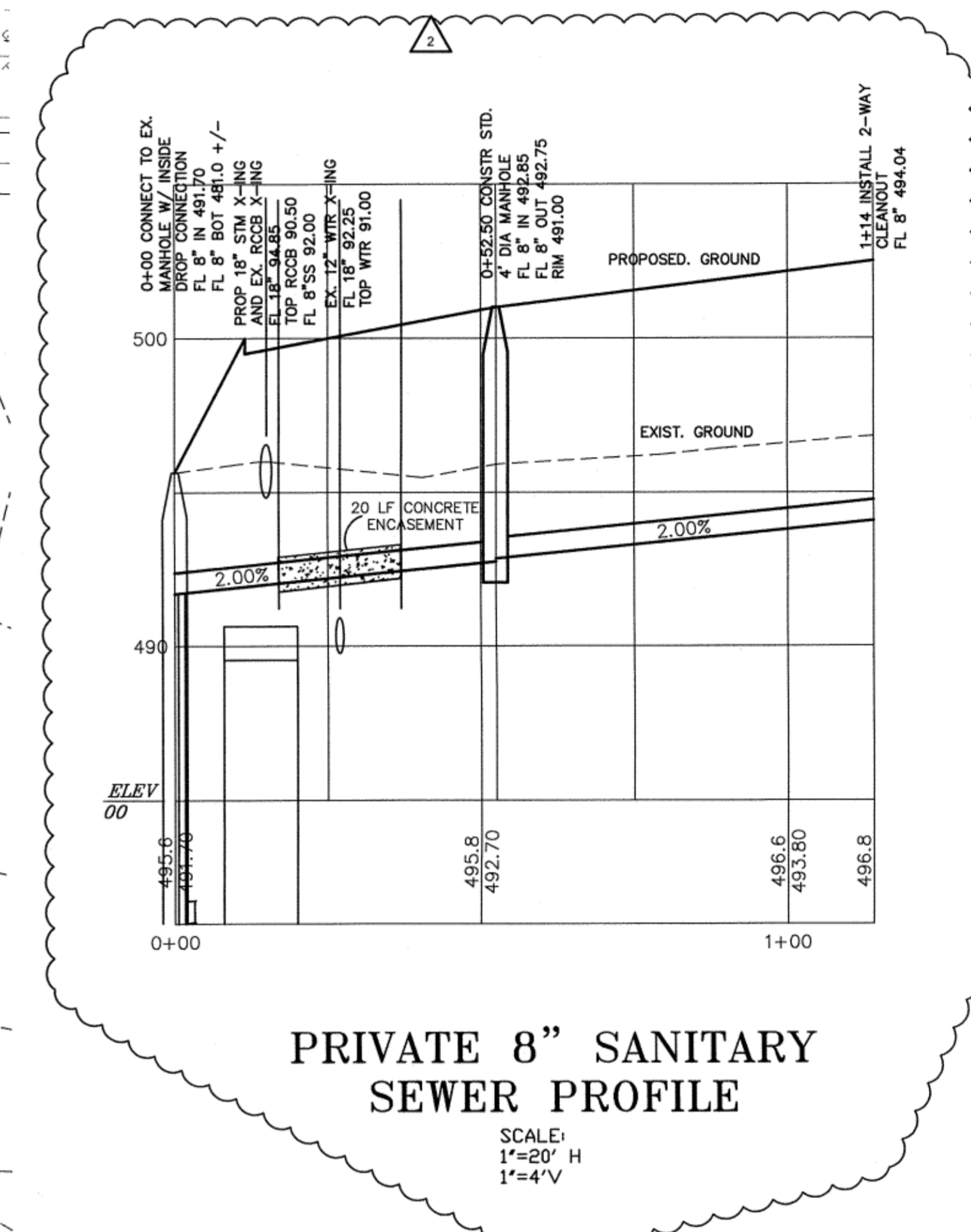
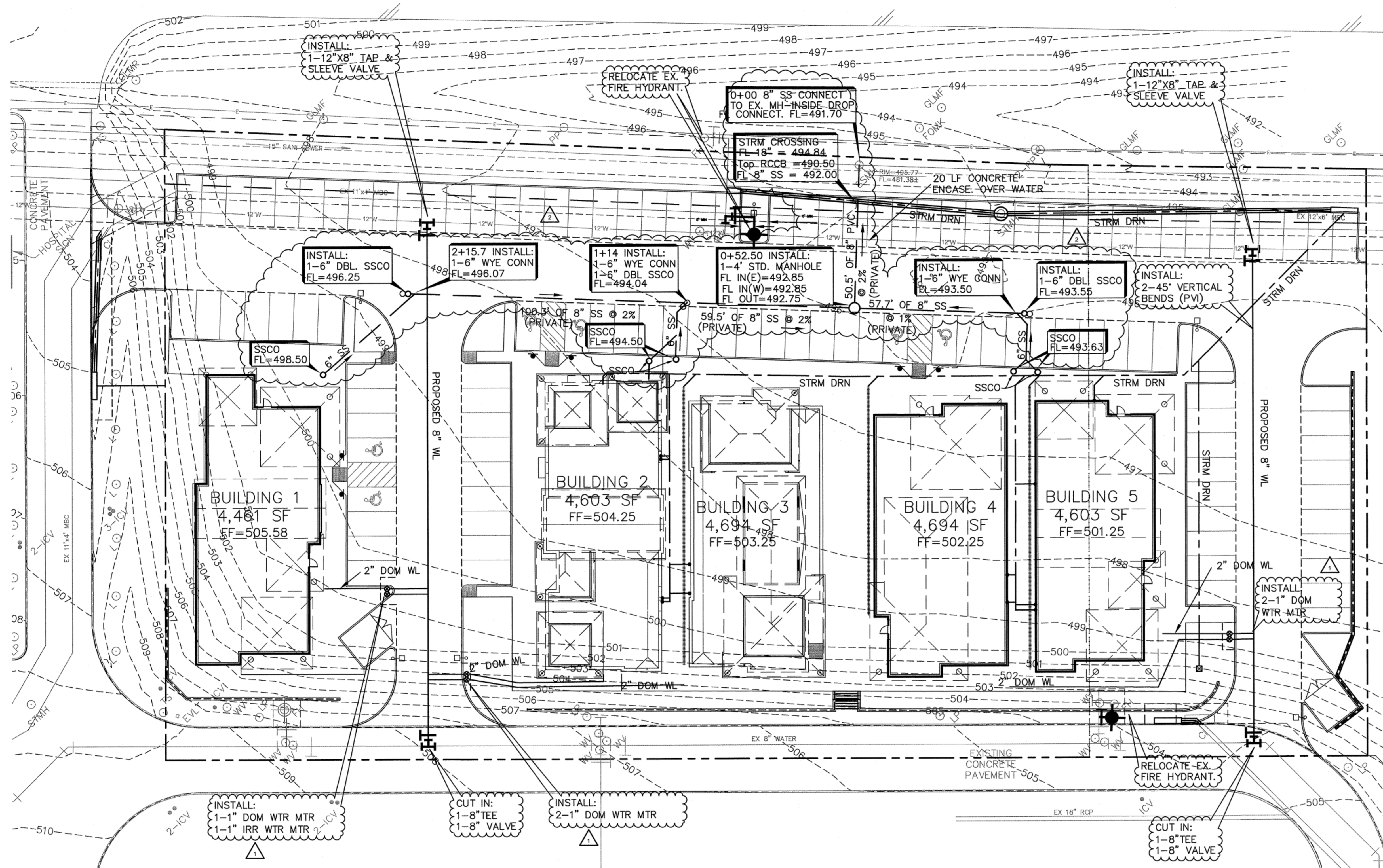
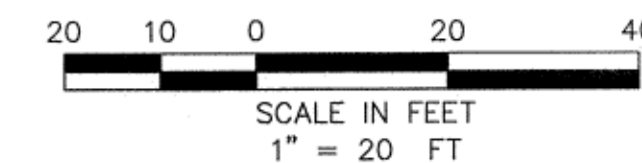


HORIZON ROAD
(F.M. ROAD NO. 3097)

ASPHALT
PAVEMENT



**PRIVATE 8" SANITARY
SEWER PROFILE**

SCALE:
1"=20' H
1"=4' V

NOTE:
ALL WATER LINE TO BE CLASS 200.

ALL SERVICES (DOM & IRR) TO HAVE
DOUBLE CHECK BACKFLOW PREVENTOR

MAINTAIN 5' MINIMUM CLEARANCE FROM
EACH FIRE HYDRANT.

BENCHMARK:
ROCKWALL MONUMENT "RESET #1" 3" BRASS DISK FOUND AT FM 740 (RIDGE ROAD) AND SUMMER LEE DRIVE NEAR THE NORTH WEST CORNER OF THE PARKING LOT FOR THE COMMUNITY BANK. NORTHING: 7011544.252 EASTING: 2590135.160 ELEVATION: 567.704 BASED ON NAD-83 TX, STATE PLANE, NORTH CENTRAL ZONE

ENGINEERINGCONCEPTS & DESIGN, L.P.
ENGINEERING / PROJECT MANAGEMENT / CONSTRUCTION SERVICES - FIRM REG. #F-001145 2801 CAPITAL, WYLIE, TX 75098 972-941-8400 FAX: 972-941-8401 WWW.ECDLP.COM

REVISIONS:	
11-19-09	REVISED METER SIZE PER MEP PLANS
2-1-12	REVISED SANITARY SEWER DEPTH
DRAWN: ECD	DATE: 7 December 2012
CHECKED: TW	DATE: MAY 2009
PROJECT NO.: 09810	
DWG FILE NAME: 9810 UTILITY PLN.DWG	

THIS DOCUMENT IS RELEASED FOR THE PURPOSE OF CONSTRUCTION. THE SEAL APPEARING ON THIS DOCUMENT WAS AUTHORIZED BY TODD D. WINTTERS, P.E. 87085



UTILITY PLAN
PRESBYTERIAN HOSPITAL OFFICE
CONDOS, LOT 4-R BLK A
CITY OF ROCKWALL, ROCKWALL COUNTY, TEXAS

RECORD DRAWINGS
THESE RECORD DRAWINGS HAVE BEEN PREPARED BASED ON INFORMATION PROVIDED BY OTHERS. THE ENGINEER HAS NOT VERIFIED THE ACCURACY OF THIS INFORMATION AND SHALL NOT BE RESPONSIBLE FOR ANY DISCREPANCIES WHICH MAY BE INCORPORATED HEREIN AS A RESULT.
ENGINEERING CONCEPTS & DESIGNS, L.P.
TODD WINTTERS, P.E. 12-11-12 DATE