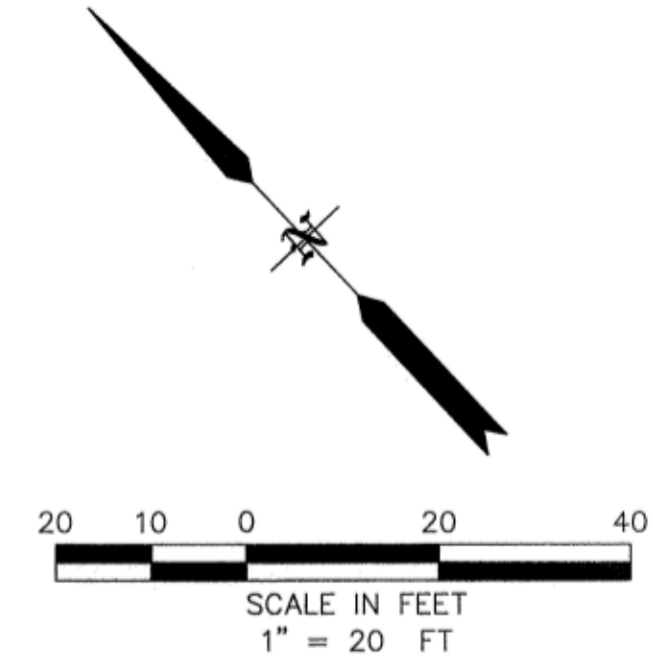


HORIZON ROAD
(F.M. ROAD NO. 3097)

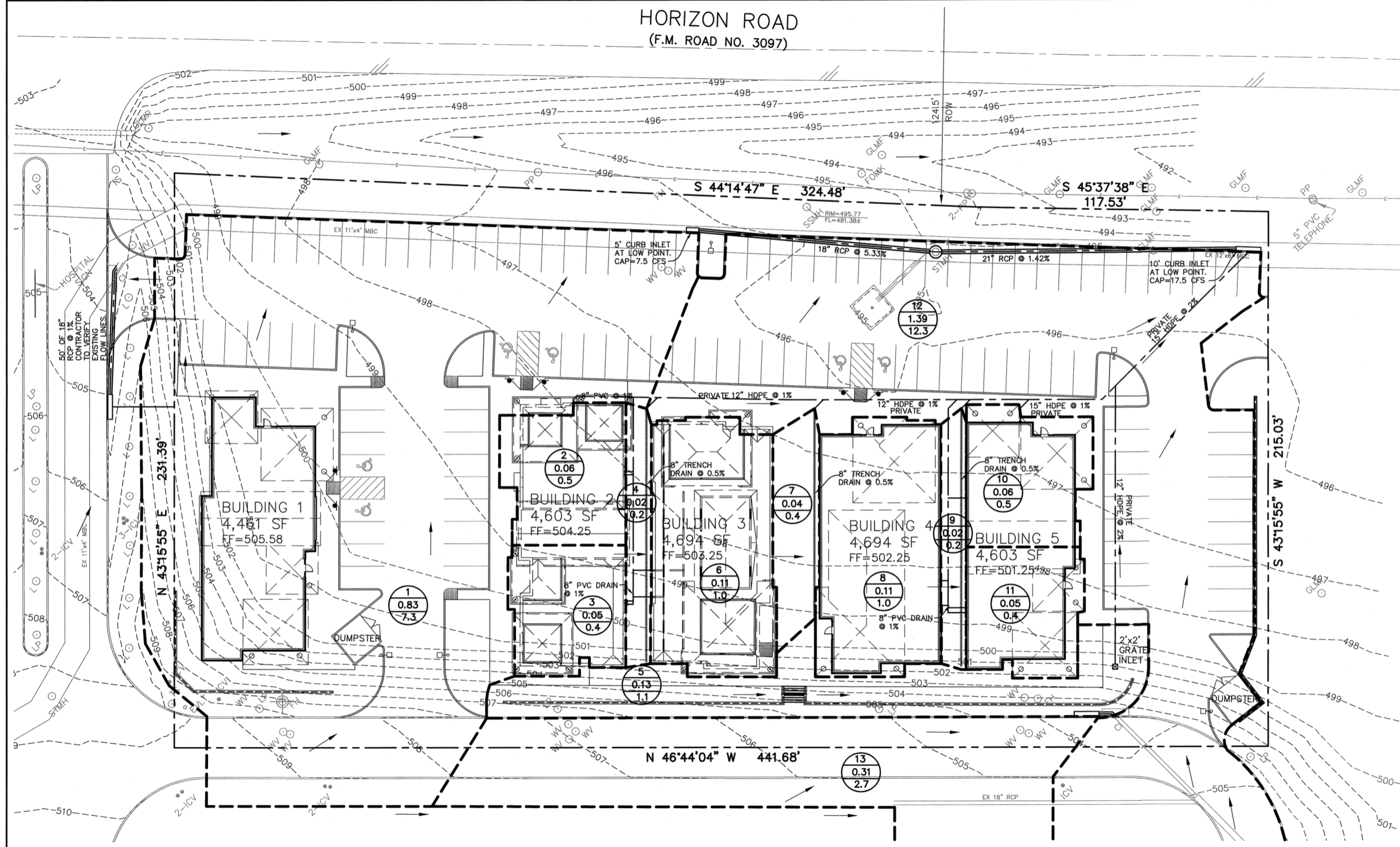


LEGEND

- 8 DRAINAGE AREA NUMBER
- 10.00 AREA (ACRES)
- 46.0 Q 100 (CFS)
- DRAINAGE DIVIDE
- FLOW DIRECTION
- - - - - 850 EXISTING CONTOURS

PROPOSED DRAINAGE CALCULATIONS

AREA #	AREA (acres)	Tc	C	Q(100) (cfs)	Q(100) (cfs)	COMMENTS
DA-1	0.83	10	0.90	9.8	7.3	TO CURB INLET
DA-2	0.06	10	0.90	9.8	0.5	ROOF DRAIN TO PRIVATE STORM DRAIN
DA-3	0.05	10	0.90	9.8	0.4	ROOF DRAIN TO PRIVATE STORM DRAIN
DA-4	0.02	10	0.90	9.8	0.2	TRENCH DRAIN TO PRIVATE STRM DRN
DA-5	0.13	10	0.90	9.8	1.1	CHANNEL FLOW TO GRATE INLET
DA-6	0.11	10	0.90	9.8	1.0	ROOF DRAIN TO PRIVATE STORM DRAIN
DA-7	0.04	10	0.90	9.8	0.4	TRENCH DRAIN TO PRIVATE STRM DRN
DA-8	0.11	10	0.90	9.8	1.0	ROOF DRAIN TO PRIVATE STORM DRAIN
DA-9	0.02	10	0.90	9.8	0.2	TRENCH DRAIN TO PRIVATE STRM DRN
DA-10	0.06	10	0.90	9.8	0.5	ROOF DRAIN TO PRIVATE STORM DRAIN
DA-11	0.05	10	0.90	9.8	0.4	ROOF DRAIN TO PRIVATE STORM DRAIN
DA-12	1.39	10	0.90	9.8	12.3	TO CURB INLET
DA-13	0.31	10	0.90	9.8	2.7	TO CURB INLET



BENCHMARK:
ROCKWALL MONUMENT "RESET #1" 3" BRASS DISK FOUND AT FM 740 (RIDGE ROAD) AND SUMMER LEE DRIVE NEAR THE NORTH WEST CORNER OF THE PARKING LOT FOR THE COMMUNITY BANK. NORTHING: 7011544.252 EASTING: 2590135.160 ELEVATION: 567.704 BASED ON NAD-83 TX, STATE PLANE, NORTH CENTRAL ZONE

ENGINEERINGCONCEPTS & DESIGN, L.P.
ENGINEERING / PROJECT MANAGEMENT / CONSTRUCTION SERVICES - FIRM REG. #F-001145
2801 CAPITAL, WYLIE, TX 75098
972-941-8400 FAX: 972-941-8401 WWW.ECDLP.COM

REVISIONS:

DRAWN: ECD	DATE: 7 December 2012
CHECKED: TW	DATE: MAY 2009
PROJECT NO.: 09810	
DWG FILE NAME: 9810 DRAINAGE.DWG	

THIS DOCUMENT IS RELEASED FOR THE PURPOSE OF CONSTRUCTION. THE SEAL APPEARING ON THIS DOCUMENT WAS AUTHORIZED BY TODD D. WINTTERS, P.E. 87085

DRAINAGE PLAN
PRESBYTERIAN HOSPITAL OFFICE
CONDOS, LOT 4-R BLK A
CITY OF ROCKWALL, ROCKWALL COUNTY, TEXAS

SHEET **7** OF **14**

RECORD DRAWINGS
THESE RECORD DRAWINGS HAVE BEEN PREPARED BASED ON INFORMATION PROVIDED BY OTHERS. THE ENGINEER HAS NOT VERIFIED THE ACCURACY OF THIS INFORMATION AND SHALL NOT BE RESPONSIBLE FOR ANY DISCREPANCIES WHICH MAY BE INCORPORATED HEREIN AS A RESULT.
ENGINEERING CONCEPTS & DESIGNS, L.P.
TODD WINTTERS, P.E. 12-11-12 DATE