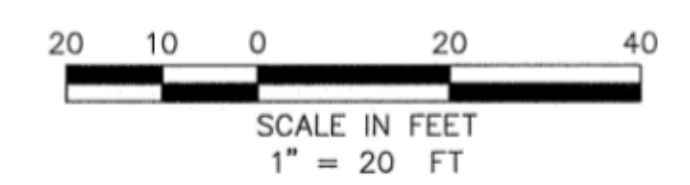


HORIZON ROAD
(F.M. ROAD NO. 3097)

ASPHALT
PAVEMENT

LOT 4-R, BLOCK A
98,129 SQ. FT.
2.253 AC.



PAVING LEGEND

- FIRELANE P.V.M.T.** 6" 3600 psi REINF. CONCRETE P.V.M.T. w/#3 BARS AT 18" CENTERS E.W ON 6" LIME STABILIZED, 36lbs/SY (8%), SUBGRADE, COMPACTED TO 95% STANDARD PROCTOR DENSITY @ A RANGE OF -1% TO +3% OPTIMUM MOISTURE. MIN 6 SACK FOR MACHINE PLACED & 6.5 SACK FOR HAND PLACED.
- PARKING P.V.M.T.** 5" 3600 psi REINF. CONCRETE P.V.M.T. w/#3 BARS AT 18" CENTERS E.W ON 6" COMPACTED SUBGRADE COMPACTED TO 95% STANDARD PROCTOR DENSITY @ A RANGE OF -1% TO +3% OPTIMUM MOISTURE.
- SIDEWALK P.V.M.T.** 4" 3000 psi REINF. CONCRETE P.V.M.T. w/#6" WWF ON 6" COMPACTED SUBGRADE COMPACTED TO 95% STANDARD PROCTOR DENSITY @ A RANGE OF -1% TO +3% OPTIMUM MOISTURE.

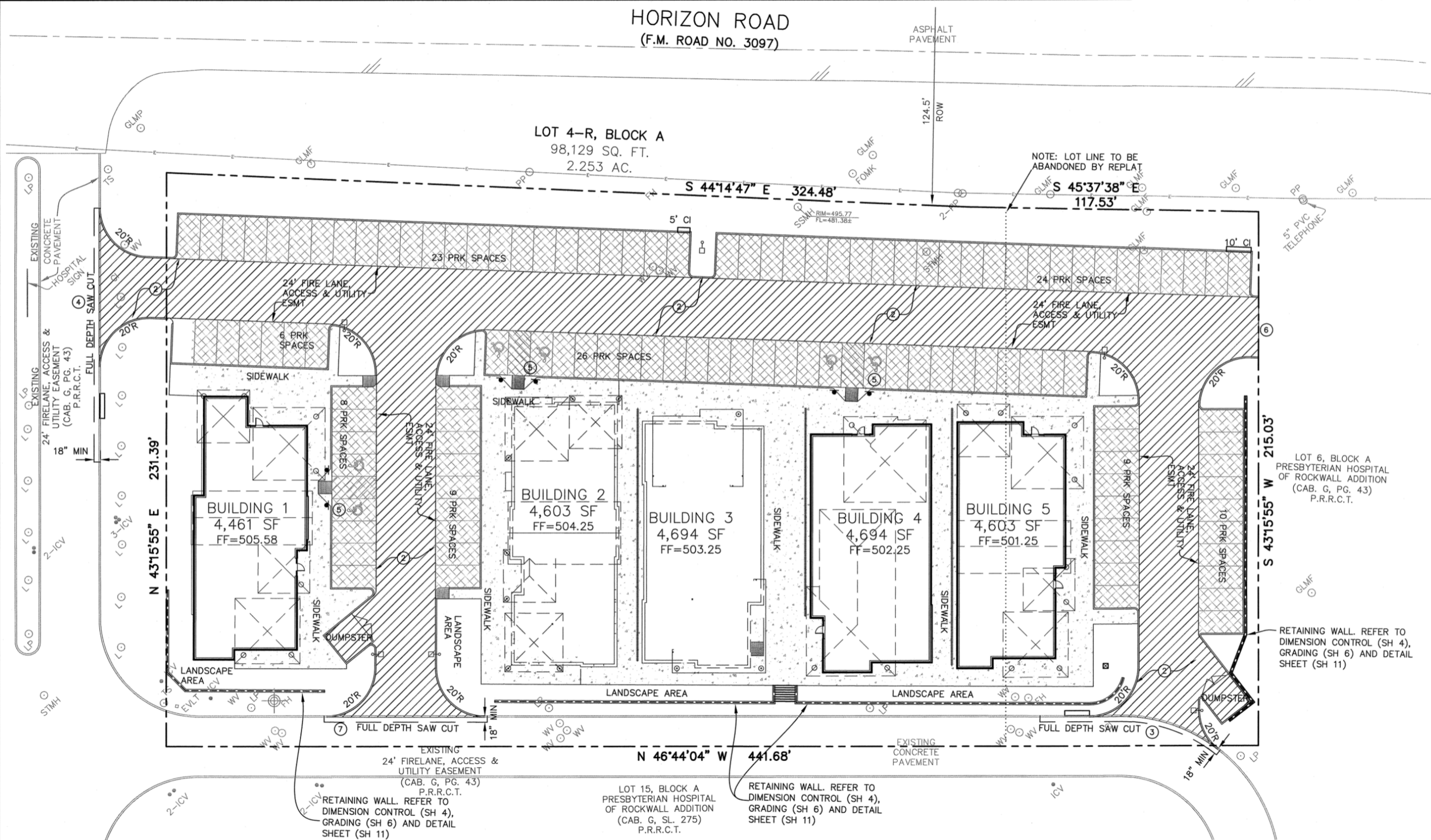
- ① EDGE OF PAVEMENT (NO CURB)
- ② FIRELANE STRIPING REFER TO DETAIL SHT.
- ③ 76" OF SAW CUT AND REMOVE EX. CURB & GUTTER. CONST LONGITUDINAL BUTT JOINT, DOWEL TO EXISTING. REFER TO DETAIL ON SHT 11
- ④ 102.5" OF SAW CUT AND REMOVE EX. CURB & GUTTER. CONST LONGITUDINAL BUTT JOINT, DOWEL TO EXISTING. REFER TO DETAIL ON SHT 11
- ⑤ HANDICAP STALL MARKINGS AND SIGNAGE (2' FROM FACE OF CURB) REFER TO DETAIL
- ⑥ 24" STREET HEADER FOR FUTURE PAVEMENT W/ BARRICADE PER CITY OF ROCKWALL DETAILS
- ⑦ 66" OF SAW CUT AND REMOVE EX. CURB & GUTTER. CONST LONGITUDINAL BUTT JOINT, DOWEL TO EXISTING. REFER TO DETAIL ON SHT 11

- LEGEND**
- GLMF-GAS LINE MARKER FOUND
 - WV-EXISTING WATER VALVE
 - LP-EXISTING LIGHT POLE
 - ICV-EXISTING IRRIGATION CONTROL VALVE
 - PP-EXISTING POWER POLE
 - FOMK-FIBER OPTIC MARKER FOUND
 - SSMH-EXISTING SANITARY SEWER MANHOLE
 - EVL-T-EXISTING ELECTRIC VAULT
 - STMH-EXISTING STORM SEWER MANHOLE
 - FH-EXISTING FIRE HYDRANT
 - L-EXISTING TREE
 - TS-EXISTING TRAFFIC SIGN

RECORD DRAWINGS

THESE RECORD DRAWINGS HAVE BEEN PREPARED BASED ON INFORMATION PROVIDED BY OTHERS. THE ENGINEER HAS NOT VERIFIED THE ACCURACY OF THIS INFORMATION AND SHALL NOT BE RESPONSIBLE FOR ANY DISCREPANCIES WHICH MAY BE INCORPORATED HEREIN AS A RESULT.

ENGINEERING CONCEPTS & DESIGNS, L.P.
TODD WINTTERS, P.E. 12-14-12 DATE



GENERAL ON-SITE PAVING NOTES:

- A. ALL CONSTRUCTION SHALL BE IN ACCORDANCE WITH THESE PLANS AND THE CITY OF ROCKWALL STANDARDS AND SPECIFICATIONS.
- B. ALL MATERIALS AND WORKMANSHIP SHALL CONFORM TO THE STANDARD AND SPECIFICATIONS NCTCOG 3RD EDITION, AND ANY SPECIAL PROVISION AS APPROVED BY THE CITY OF ROCKWALL.
- C. PRIOR TO CONSTRUCTION, THE CONTRACTOR SHALL MAKE CERTAIN THAT ALL REQUIRED PERMITS AND APPROVALS HAVE BEEN OBTAINED. NO CONSTRUCTION OR FABRICATION SHALL BEGIN UNTIL THE CONTRACTOR HAS RECEIVED AND THOROUGHLY REVIEWED ALL PLANS AND DOCUMENTS APPROVED BY THE PERMITTING AGENCIES.
- D. DURING THE CONSTRUCTION OF THESE IMPROVEMENTS, ANY INTERPRATATION OF THE STANDARD SPECIFICATIONS FOR THE PUBLIC WORKS CONSTRUCTION AND ANY MATTER WHICH REQUIRES THE APPROVAL OF THE OWNER MUST BE APPROVED BY THE CITY ENGINEER OR HIS DESIGNEE BEFORE ANY CONSTRUCTION INVOLVING DECISION COMMENCES. ASSUMPTIONS ABOUT WHAT THESE DECISIONS MIGHT BE WHICH ARE MADE DURING THE BIDDING PHASE WILL HAVE NO BEARING ON THE DECISION.
- E. ALL ON-SITE PAVEMENT SUBGRADE AND PAVEMENT SHALL CONFORM TO THE PAVEMENT LEGEND LOCATED ON THIS SHEET, GEOTECHNICAL RECOMMENDATIONS, AND CITY OF ROCKWALL STANDARDS FOR FIRE LANES, PARKING LOTS, AND SIDEWALKS. SUBGRADE COMPACTION SHALL EXTEND 1' BEYOND PAVEMENT EDGES.

- F. REFER TO DIMENSION CONTROL PLAN FOR FURTHER DIMENSIONS.
- G. ALL RADII ARE 2'(FT) UNLESS OTHERWISE NOTED.
- H. PARKING SPACE ARE 90° UNLESS OTHERWISE NOTED.
- I. REFER TO ARCHITECTURAL PLANS FOR DETAILED BUILDING PLAN DIMENSIONS.
- J. REFER TO EXPANSION JOINT DETAIL FOR SPACING.
- K. ALL PAVEMENT IS TO BE INTEGRAL 6" CURB AND GUTTER UNLESS OTHERWISE NOTED IN THE PLAN SET.
- L. JOINT LAYOUT BY CONTRACTOR, SUBMIT TO DESIGN ENGINEER FOR APPROVAL PRIOR TO JOINT PLACEMENT.

NOTE: LIMITS OF SITE WORK AT CURB OR 5' FROM BUILDING WHERE CURB DOES NOT EXIST. REFER TO ARCHITECTURAL PLANS FOR ACCESSIBILITY BETWEEN BUILDING AND DRIVE OR PARKING.

BENCHMARK:

ROCKWALL MONUMENT "RESET #1" 3" BRASS DISK FOUND AT FM 740 (RIDGE ROAD) AND SUMMER LEE DRIVE NEAR THE NORTH WEST CORNER OF THE PARKING LOT FOR THE COMMUNITY BANK.
NORTHING: 7011544.252 EASTING: 2590135.160
ELEVATION: 567.704
BASED ON NAD-83 TX, STATE PLANE, NORTH CENTRAL ZONE

ENGINEERING CONCEPTS & DESIGN, L.P.

ENGINEERING / PROJECT MANAGEMENT / CONSTRUCTION SERVICES - FIRM REG. #F-001145
2801 CAPITAL, WYLIE, TX 75098
972-941-8400 FAX: 972-941-8401 WWW.ECDLP.COM

REVISIONS:

DRAWN: ECD	DATE: 7 December 2012
CHECKED: TW	DATE: MAY 2009
PROJECT NO.: 09810	
DWG FILE NAME: 9810 PAVING PLN.DWG	

THIS DOCUMENT IS RELEASED FOR THE PURPOSE OF CONSTRUCTION. THE SEAL APPEARING ON THIS DOCUMENT WAS AUTHORIZED BY TODD D. WINTTERS, P.E. 87085

PAVING PLAN

PRESBYTERIAN HOSPITAL OFFICE CONDOS, LOT 4-R BLK A

CITY OF ROCKWALL, ROCKWALL COUNTY, TEXAS

SHEET 5 OF 14