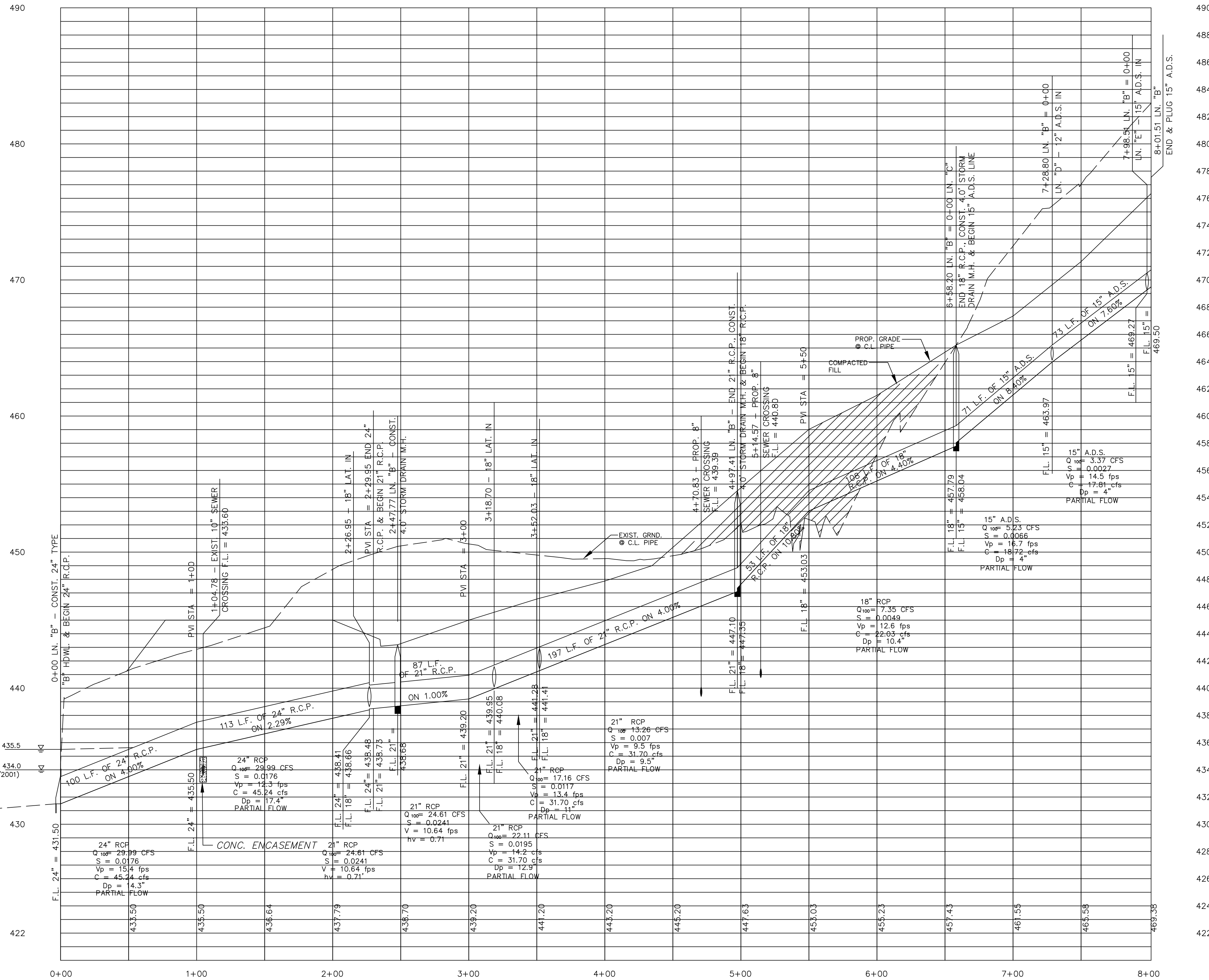


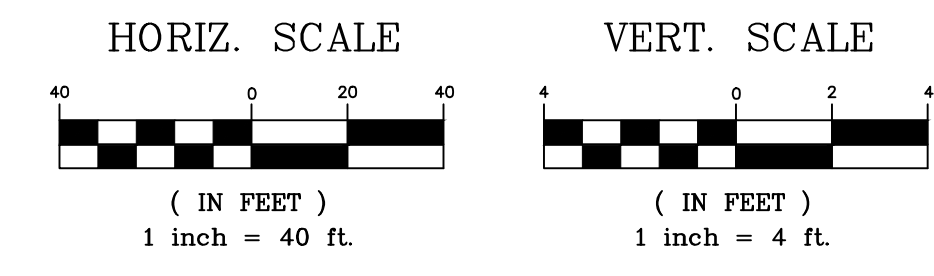
LINE "B"



From	To	Length	DESIGN Q100	Pipe Size (in)	CAP Q100	FULL V	PARTIAL V	PARTIAL FLOW	FLOW CHT. No	Kj	Flow R(ft)	DESIGN R*2/3	DESIGN S	HGL Rise	HGL Number		
STM B														435.50	Starting		
229.95	0	229.95	29.99	24	45.24	9.55	10.02	0.66	1.05		0.5000	0.6300	3.1416	0.0176	0.0400	4.0412	439.54
Junction Loss										0.9000				-0.0480	439.49		
247.77	229.95	17.82	24.61	21	15.85	10.23	10.64	1.55	1.04		0.4375	0.5763	2.4053	0.0241	0.0100	0.4299	439.92
Junction Loss										0.4000				0.8902	440.81		
318.70	247.77	70.93	22.11	21	31.69	9.19	10.30	0.70	1.12		0.4375	0.5763	2.4053	0.0195	0.0400	1.3811	442.19
Junction Loss										1.0000				0.8402	443.03		
352.03	318.70	33.33	17.16	21	31.69	7.13	8.06	0.54	1.13		0.4375	0.5763	2.4053	0.0117	0.0400	0.3909	443.43
Junction Loss										1.0000				0.3184	443.74		
497.41	352.03	145.38	13.26	21	31.69	5.51	4.91	0.42	0.89		0.4375	0.5763	2.4053	0.0070	0.0400	1.0181	444.76
Junction Loss										0.4000				0.6829	445.44		
658.20	497.41	160.79	7.35	18	34.52	4.16	4.66	0.21	1.12		0.3750	0.5200	1.7671	0.0049	0.1080	0.7872	446.23
Junction Loss										1.0000				0.1515	446.38		
728.80	658.20	70.6	5.23	15	18.72	4.26	4.82	0.28	1.13		0.3125	0.4605	1.2272	0.0066	0.0840	0.4628	446.85
Junction Loss										1.0000				0.1649	447.01		
798.51	728.80	69.71	3.37	15	17.81	2.75	2.44	0.19	0.89		0.3125	0.4605	1.2272	0.0027	0.0760	0.1897	447.20

NOTE: THE CONTRACTOR(S) SHALL NOTIFY DWJ CONSTRUCTION INSPECTION AT (214) 948-4562 FORTY-EIGHT (48) HOURS PRIOR TO CONSTRUCTION WITHIN THE CITY OF DALLAS TAKE-LINE.

NOTE: ALL CONSTRUCTION WITHIN THE CITY OF DALLAS TAKE LINE SHALL BE PER THE CITY OF DALLAS STANDARDS AND SPECIFICATIONS.



BENCHMARK: "□" AT SOUTH SIDE OF SANITARY SEWER LIFT STATION, LOCATED 100 FT. EAST, AND 10 FT (+/-) SOUTH FROM THE SOUTHWEST CORNER OF THIS PROPERTY. ELEV 450.45.

K:\p\p\k\cta\9953\9953PH2SDP.dwg 09/14/01 10:24:38 AM CDT

THE SEAL APPEARING ON THIS DOCUMENT WAS AUTHORIZED BY THE BOARD OF PROFESSIONAL ENGINEERS AND SURVEYORS OF THE STATE OF TEXAS. NO. 60102 ON 06/12/01

DOUPHRAATE & ASSOCIATES, INC.
 ENGINEERING • PROJECT MANAGEMENT • SURVEYING
 2235 RIDGE RD., # 200 ROCKWALL, TEXAS 75087
 PHONE: (972)771-9004 FAX: (972)771-9005

STORM SEWER PROFILE - LINE 'B'

VILLAS DE PORTORINO PHASE 2
 CITY OF ROCKWALL
 COUNTY OF ROCKWALL

REVISION	PER CITY COMMENTS	CHECKED BY
07-09-2001		WLD
08-27-2001		
09-20-2001		
DRAWN BY		DATE
WLD		6/12/01
PROJECT NO.		DRAWING NAME
9953		9953PH2SDP2
17		
OP		