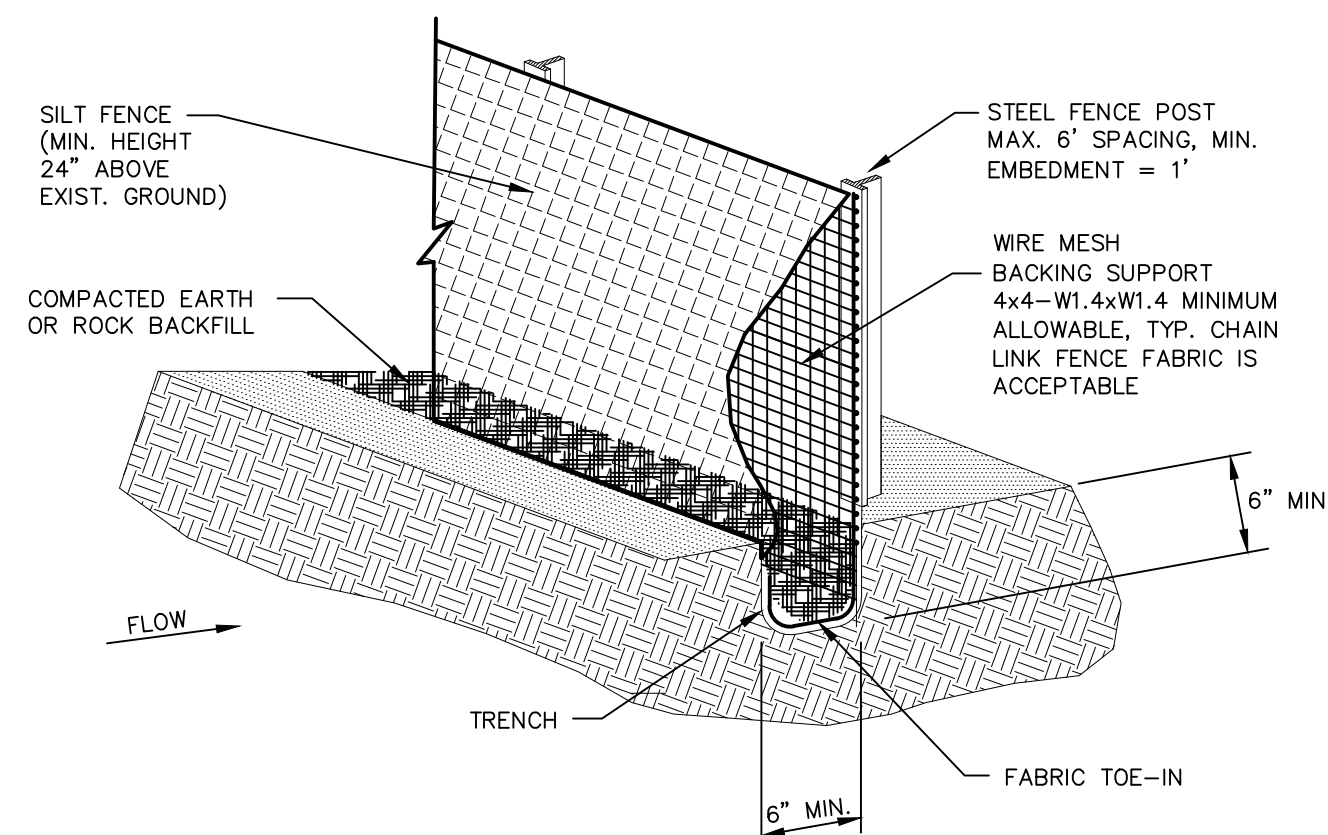


NOTE: INFORMATION ON THIS SHEET AND OTHER SHEETS THROUGHOUT THIS PLAN SET IS PART OF A UNIFIED DESIGN. THE CONTRACTOR SHALL NOT SEPERATE DRAWINGS FROM THE SET FOR DISTRIBUTION TO SPECIFIC DISCIPLINES. EACH SUBCONTRACTOR SHALL BE PROVIDED WITH ALL SHEETS WITHIN THIS PLAN SET.

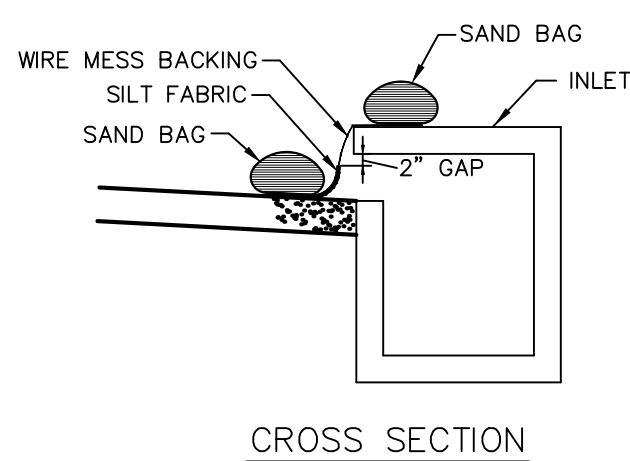


SILT FENCE GENERAL NOTES:

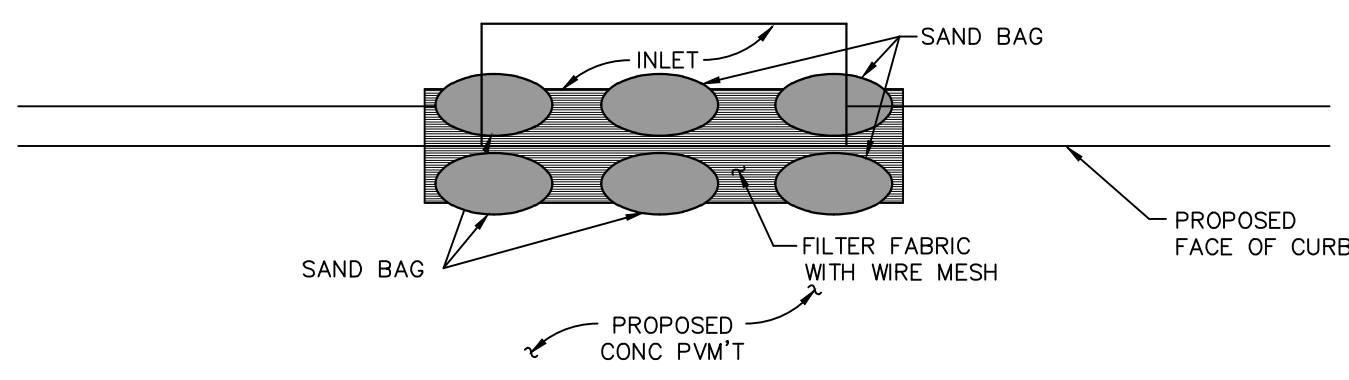
1. STEEL POSTS WHICH SUPPORT THE SILT FENCE SHALL BE INSTALLED ON A SLIGHT ANGLE TOWARD THE ANTICIPATED RUNOFF SOURCE. POST MUST BE EMBEDDED A MINIMUM OF ONE FOOT.
2. THE TOE OF THE SILT FENCE SHALL BE TRENCHED IN WITH A SPADE OR MECHANICAL TRENCHER, SO THAT THE DOWN SLOPE FACE OF THE TRENCH IS FLAT AND PERPENDICULAR TO THE LINE OF FLOW. WHERE FENCE CANNOT BE TRENCHED IN (e.g. PAVEMENT), WEIGHT FABRIC FLAP WITH ROCK ON UPHILL SIDE TO PREVENT FLOW FROM SEEPING UNDER FENCE.
3. THE TRENCH MUST BE A MINIMUM OF 6 INCHES DEEP AND 6 INCHES WIDE TO ALLOW FOR THE SILT FENCE FABRIC TO BE LAID IN THE GROUND AND BACKFILLED WITH COMPACTED MATERIAL.
4. SILT FENCE SHOULD BE SECURELY FASTENED TO EACH STEEL SUPPORT POST OR TO WOVEN WIRE, WHICH IN TURN IS ATTACHED TO THE STEEL FENCE POST. THERE SHALL BE A 3 FOOT OVERLAP, SECURELY FASTENED WHERE ENDS OF FABRIC MEET.
5. INSPECTION SHALL BE MADE EVERY TWO WEEKS AND AFTER EACH 1/2" RAINFALL. REPAIR OR REPLACEMENT SHALL BE MADE PROMPTLY AS NEEDED.
6. SILT FENCE SHALL BE REMOVED WHEN THE SITE IS COMPLETELY STABILIZED SO AS NOT TO BLOCK OR IMPEDE STORM FLOW OR DRAINAGE.
7. ACCUMULATED SILT SHALL BE REMOVED WHEN IT REACHES A DEPTH OF HALF THE HEIGHT OF THE FENCE. THE SILT SHALL BE DISPOSED OF AT AN APPROVED SITE AND IN SUCH A MANNER AS TO NOT CONTRIBUTE TO ADDITIONAL SILTATION.

CONSTRUCTION OF A FILTER BARRIER

(SF) N.T.S.

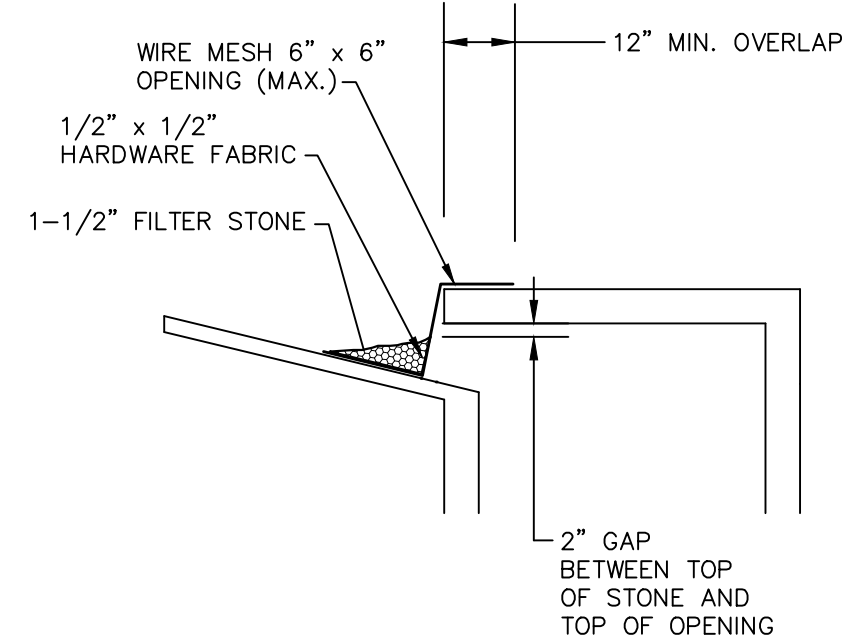


CROSS SECTION



CURB INLET PROTECTION

(IP) N.T.S.

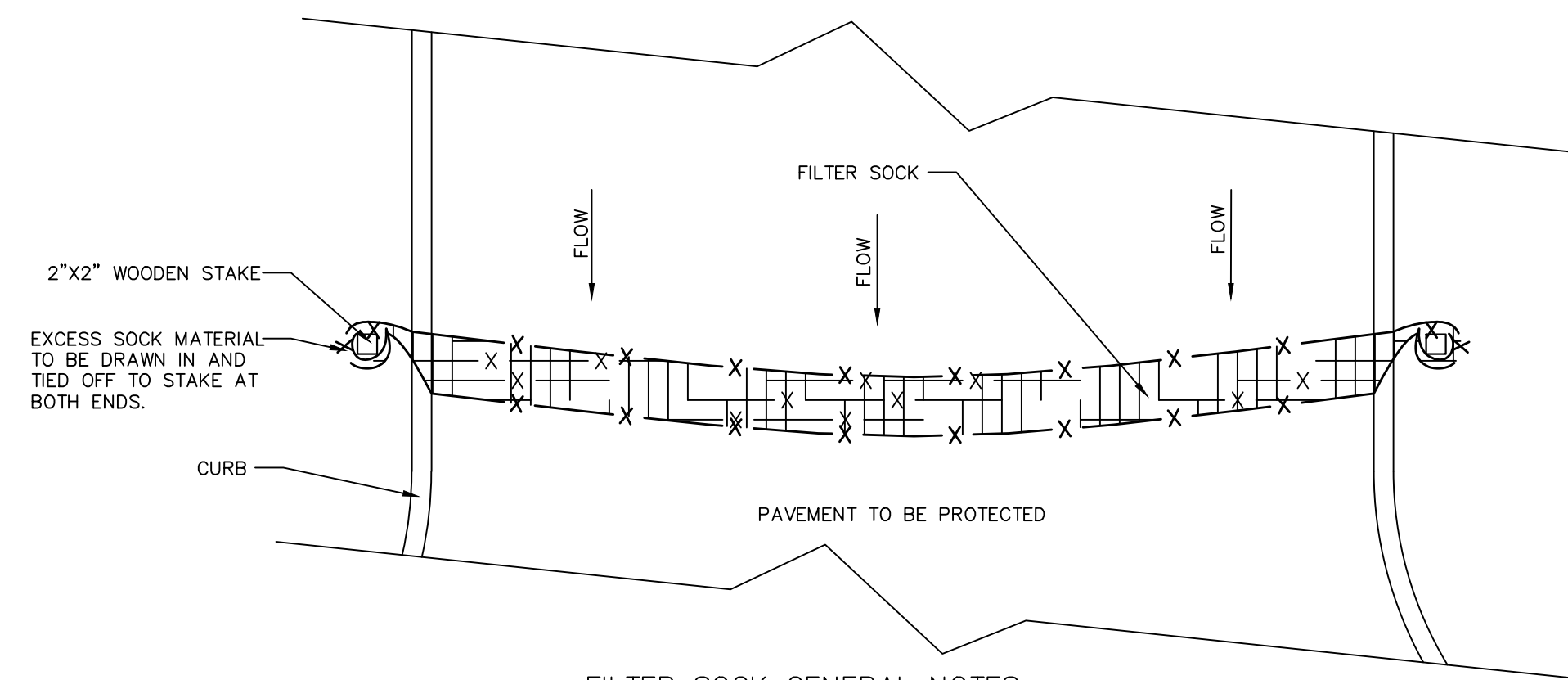


CURB INLET PROTECTION NOTES:

1. WITHIN FORTY-EIGHT (48) HOURS OF POURING THE BLOCKOUT AND TOP, PLACE WIRE MESH WITH 12" OPENINGS OVER ALL CURB AND GRATE INLET OPENINGS SO THAT AT LEAST 12" OF WIRE EXTENDS ACROSS THE INLET COVER-GUTTER AND AROUND ALL GRATES AS ILLUSTRATED.
2. PLACE SMALL SAND BAGS AGAINST THE WIRE SO AS TO ANCHOR SAME AGAINST THE GUTTER, GRATE AND INLET COVER.
3. IF THE SEDIMENT FILTER BECOMES CLOGGED WITH DEBRIS SO THAT IT NO LONGER ADEQUATELY PERFORMS ITS FUNCTION, REMOVE THE SAND BAGS, CLEAN IT AND REPLACE THE SAND BAGS.
4. MAKE WEEKLY INSPECTIONS OF THESE SEDIMENT FILTERS FOR CONFORMANCE TO THESE CONDITIONS. PARTICULARLY INSPECT ALL INLETS AFTER EACH RAIN. COMPLETELY REMOVE ALL SEDIMENT FILTERS UPON ESTABLISHMENT OF GRASS, FINAL STABILIZATION OF CONSTRUCTION SITE.

CURB INLET PROTECTION

(IP) N.T.S.

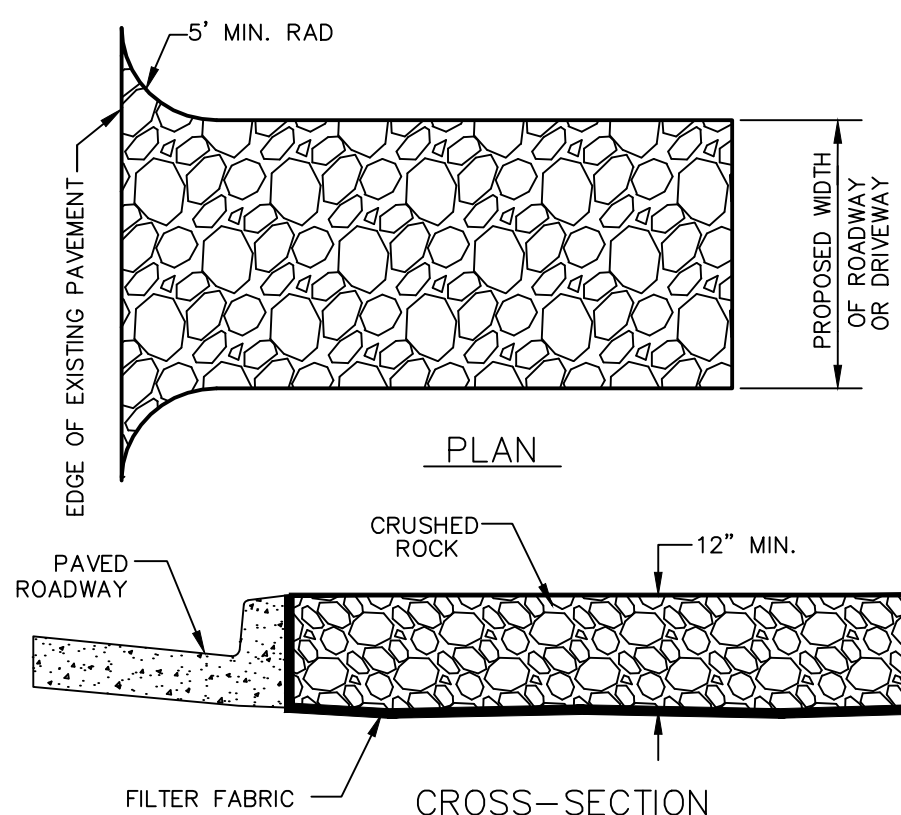


FILTER SOCK GENERAL NOTES:

1. ALL MATERIAL TO MEET MANUFACTURER SPECIFICATIONS
2. FILTER SOCK TO BE FILTREXX INLET SOCKX OR APPROVED EQUAL
3. INSPECTION SHALL BE MADE EVERY TWO WEEKS AND AFTER EACH 1/2" RAINFALL. REPAIR OR REPLACEMENT SHALL BE MADE PROMPTLY AS NEEDED.
4. FILTER SOCK SHALL BE REMOVED WHEN THE SITE IS COMPLETELY STABILIZED SO AS NOT TO BLOCK OR IMPEDE STORM FLOW OR DRAINAGE.
5. ACCUMULATED SILT SHALL BE REMOVED WHEN IT REACHES A DEPTH OF HALF THE HEIGHT OF THE SOCK. THE SILT SHALL BE DISPOSED OF AT AN APPROVED SITE AND IN SUCH A MANNER AS TO NOT CONTRIBUTE TO ADDITIONAL SILTATION.
6. COMPOST MATERIAL TO BE DISPERSED ON SITE, AS DETERMINED BY ENGINEER.

FILTER SOCK INSTALLATION

(FS) N.T.S.

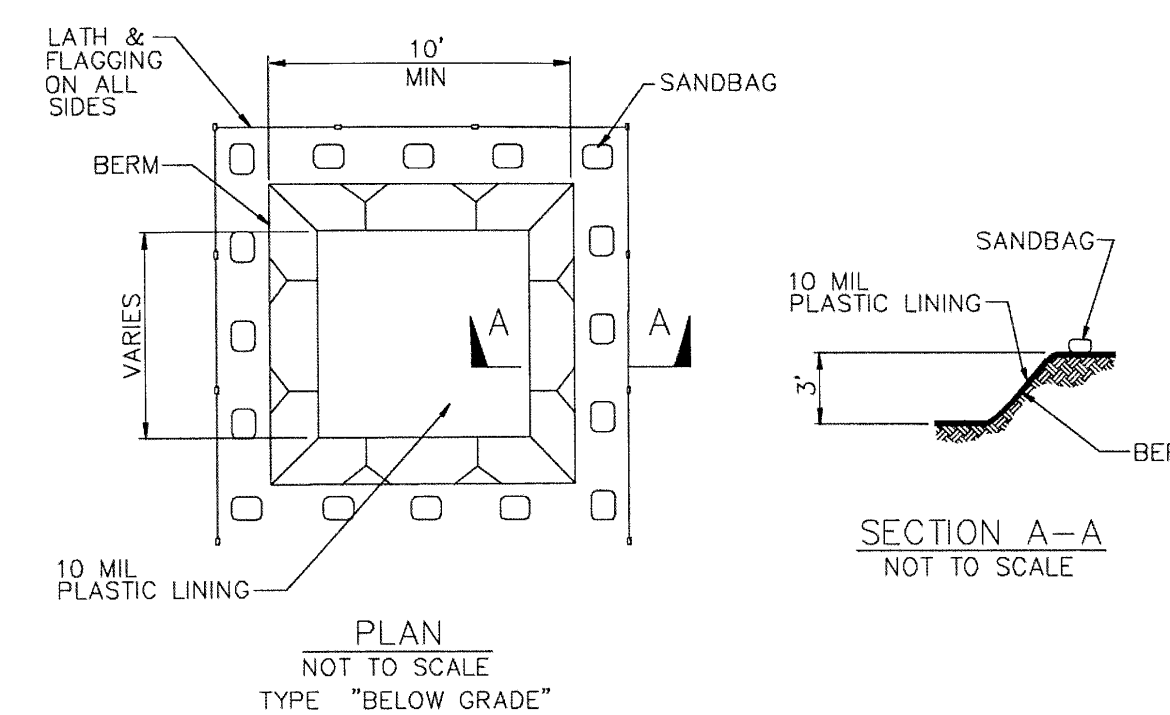


CONSTRUCTION ENTRANCE NOTES:

1. STONE SIZE - 4 TO 6 INCHES CRUSHED ROCK (NO CRUSHED CONCRETE ALLOWED).
2. LENGTH - PER CITY OR NCTCOG STANDARDS.
3. THICKNESS - NOT LESS THAN 12 INCHES.
4. WIDTH - NOT LESS THAN FULL WIDTH OF ALL POINTS OF INGRESS OR EGRESS.
5. WASHING - WHEN NECESSARY, WHEELS SHALL BE CLEANED TO REMOVE SEDIMENT PRIOR TO ENTRANCE ONTO PUBLIC ROADWAY. WHEN WASHING IS REQUIRED, IT SHALL BE DONE ON AN AREA STABILIZED WITH CRUSHED STONE WHICH DRAINS INTO AN APPROVED TRAP OR SEDIMENT BASIN. ALL SEDIMENT SHALL BE PREVENTED FROM ENTERING ANY STORM DRAIN, DITCH OR WATERCOURSE USING APPROVED METHODS.
6. MAINTENANCE - THE ENTRANCE SHALL BE MAINTAINED IN CONDITION WHICH WILL PREVENT TRACKING OR FLOWING OF SEDIMENT ONTO PUBLIC ROADWAYS. THIS MAY REQUIRE PERIODIC TOP DRESSING WITH ADDITIONAL STONE AS CONDITIONS DEMAND, AND REPAIR AND/OR CLEAN OUT OF ANY MEASURES USED TO TRAP SEDIMENT. ALL SEDIMENT SPILLED, DROPPED, WASHED OR TRACKED ONTO PUBLIC ROADWAY, MUST BE REMOVED IMMEDIATELY.
7. DRAINAGE - ENTRANCE MUST BE PROPERLY GRADED OR INCORPORATE A DRAINAGE SWALE TO PREVENT RUNOFF FROM LEAVING THE CONSTRUCTION SITE.
8. CONTRACTOR TO COORDINATE EXACT LOCATION OF THIS DETAIL.

CONSTRUCTION ENTRANCE

(CE) N.T.S.



SECTION A-A NOT TO SCALE

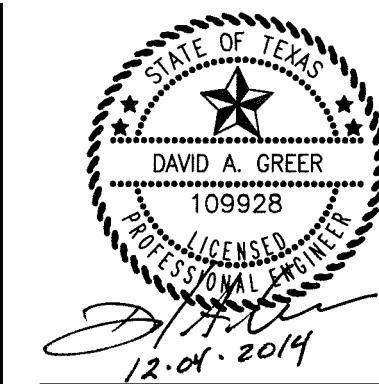
SECTION B-B NOT TO SCALE

NOTES:

1. ACTUAL LAYOUT DETERMINED IN FIELD.
2. THE CONCRETE WASHOUT SIGN SHALL BE INSTALLED WITHIN 30 FT. OF THE TEMPORARY CONCRETE WASHOUT FACILITY.

WASHOUT PIT

(WF) N.T.S.



Design and construction documents as instruments of service are given in confidence and remain the property of Herschman Architects. The use of this design and these construction documents for purposes other than the specific project named herein is strictly prohibited without expressed written consent of Herschman Architects, Incorporated.

Date	Issue
9-26-2014	• BID/PERMIT
11-07-2014	• CITY COMMENTS
12-04-2014	• CITY COMMENTS

Drawn By: \_\_\_\_\_  
Project No.: 14389

EROSION CONTROL DETAILS  
 RETAIL BUILDING  
 PLAZA AT ROCKWALL SHOPPING CENTER  
 INTERSTATE HIGHWAY 30  
 ROCKWALL, TX

**RECORD DRAWING**  
 TO THE BEST OF OUR KNOWLEDGE, BANNISTER ENGINEERING, LLC, HEREBY STATES THAT THIS PLAN IS AS-BUILT. THE INFORMATION PROVIDED IS BASED ON SURVEYING AT THE SITE AND INFORMATION PROVIDED BY THE CONTRACTOR. IN THE EVENT THAT THE ORIGINAL DESIGN WAS MODIFIED IN THE FIELD WITHOUT THE ENGINEER'S KNOWLEDGE, THE SEAL OR SIGNATURE ON THIS DRAWING IS NOT INTENDED TO INDICATE THE ENGINEER'S APPROVAL OR ACCEPTANCE OF ANY SUCH DEVIATIONS FROM THE DESIGN.  
 DAVID A. GREER, P.E. DATE: 09.25.15 109928



**HERSCHMAN ARCHITECTS**  
 INCORPORATED  
 25001 EMERY ROAD, SUITE 400  
 CLEVELAND, OH 44128  
 TEL (216) 223-3200  
 FAX (216) 223-3210  
 www.herschmanarchitects.com